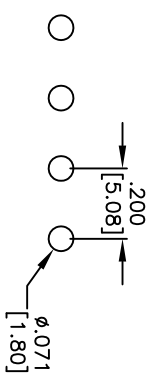
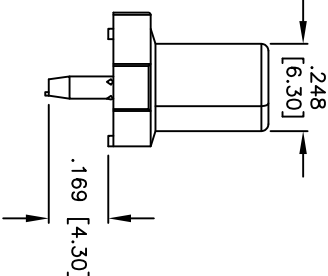
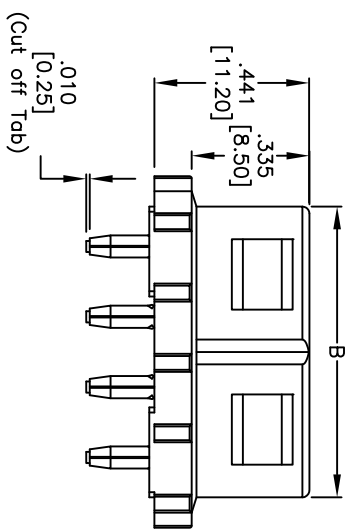
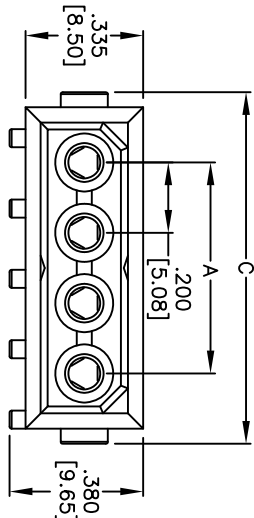
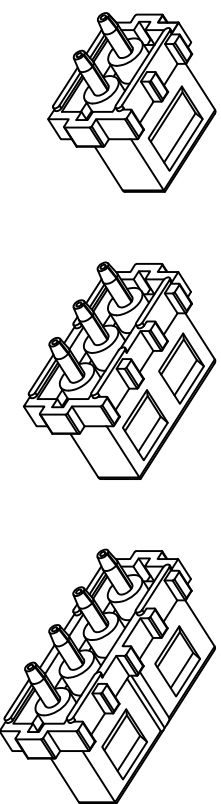


APPROVED: _____
 DATE: _____ TITLE: _____



RECOMMENDED PCB LAYOUT



Positions	Dim. A	Dim. B	Dim. C
2	.200 [5.08]	.427 [10.84]	.600 [15.24]
3	.400 [10.16]	.627 [15.92]	.800 [20.32]
4	.600 [15.24]	.827 [21.00]	1.000 [25.40]

SPECIFICATIONS:
Material:
 Insulator: Nylon, glass reinforced, rated UL 94V-2
 Insulator color: Natural
 Contacts: Phosphor Bronze

Plating:
 Tin over nickel underplate
Electrical:
 Operation voltage: 250 VAC max
 Current rating: 7 Amps max
 Contact resistance: 20 mohms max
 Dielectric withstanding voltage: 1500 VAC min rms
Temperature rating:
 Operating temperature: -25°C to +85°C

Environmental:
 Lead Free, RoHS compliant
 Recommended soldering temperature: 235°C for 5 seconds



Rev	AWO #	Description	Date	Appr
-		RELEASED	10/19/09	
A		REVISED OPERATING TEMP.	2/24/10	

UNLESS OTHERWISE SPECIFIED
 ALL DIMENSIONS ARE INCHES [MM]
 TOLERANCES: EXCEPT AS NOTED
 INCHES: X ± .10 ØX ± .10
 .XX ± .020 ØXX ± .015
 .XXX ± .015 ØXXX ± .010

ADAM TECH
 909 Railway Avenue, Union, NJ 07083
 Phone: 908-687-5000 Fax: 908-687-5710

TITLE: .200 [5.08] VERTICAL HEADER

DRAWN	DY	10/19/09	SIZE	PART NO.	DDS-XXA	REV.	A
CHECKED							
APPROVED			REF:	S00004T	SCALE:	NTS	SHEET 1 OF 1