

PRODUCT NUMBER

6 4 1 1 1 - X X X - X X - X X X X LF

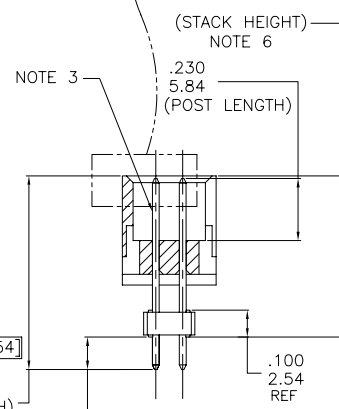
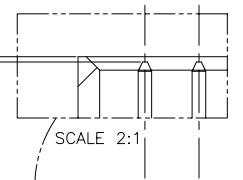
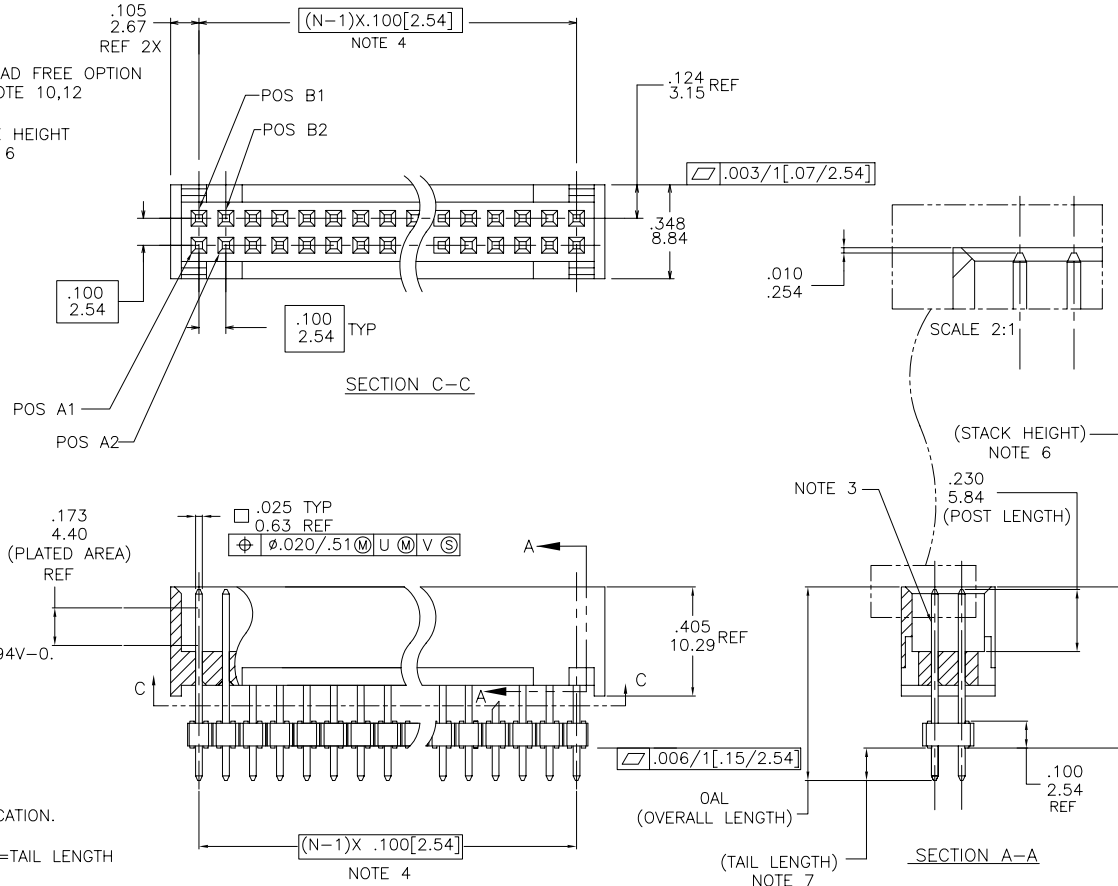
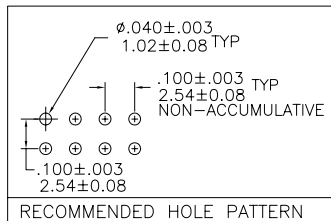
PLATING  
 S=15µ" [0.38µm] GOLD ON CONTACT AREA  
 120µ" [3.0µm] TIN/LEAD ON TAIL  
 G=30µ" [0.76µm] GOLD ON CONTACT AREA  
 120µ" [3.0µm] TIN/LEAD ON TAIL  
 T=120µ" [3.0µm] TIN/LEAD (SEE NOTE 9).  
 LEAD FREE OPTION  
 S=15µ" [0.38µm] GOLD ON CONTACT AREA  
 100µ" [2.54µm] PURE TIN ON TAIL  
 G=30µ" [0.76µm] GOLD ON CONTACT AREA  
 100µ" [2.54µm] PURE TIN ON TAIL  
 T=100µ" [2.54µm] PURE TIN

PIN STYLE	OAL
11	0.540/13.72
12	0.640/16.26
14	0.740/18.80
16	0.840/21.34
18	0.940/23.88
20	1.040/26.42
22	1.140/28.96
24	1.240/31.50
26	1.340/34.04

POSITIONS PER ROW	POSITIONS
05	5 POSITIONS
07	7 POSITIONS
08	8 POSITIONS
10	10 POSITIONS
13	13 POSITIONS
15	15 POSITIONS
17	17 POSITIONS
20	20 POSITIONS
25	25 POSITIONS
30	30 POSITIONS
32	32 POSITIONS
36	36 POSITIONS

NOTES:

- HOUSING MAT'L: HIGH TEMPERATURE THERMOPLASTIC. UL94V-0. COLOR : BLACK
- PIN MATERIAL: PHOSPHOR-BRONZE
- 3 LBS/1.36 KG MIN. RETENTION.
- TO DETERMINE DIMENSIONS:  
 $N = \text{NUMBER OF POSITIONS PER ROW}$   
 EXAMPLE: 10 POS.,  $(N-1) \times .100/2.54 = .900/22.86$
- PACKAGED IN TRAYS
- STACK HEIGHT TO BE DETERMINED BY CUSTOMER APPLICATION. EXAMPLE FOR STACKER HEIGHT: 0 5 0 0 = .500 IN.
- TAIL LENGTH IS DETERMINED BY:  $(\text{OAL}) - (\text{STACK HEIGHT}) = \text{TAIL LENGTH}$
- UNDERPLATING: 50µ"/1.27µm Ni.
- PIN TIPS ON TIN/LEAD PLATED PRODUCT MAY HAVE BARE METAL ON TWO SIDES, BOTH ENDS.
- ADD "LF" SUFFIX AT THE END OF PART NUMBER FOR LEAD FREE OPTION.
- THE HOUSING WILL WITHSTAND EXPOSURE TO 260°C PEAK TEMPERATURE FOR 15 SECONDS IN A WAVE SOLDER APPLICATION WITH A 1.5mm MINIMUM THICK CIRCUIT BOARD. SEE APPLICATION NOTES/PROCEDURES IF THEY ARE AVAILABLE.
- IF "LF" P/N THE PRODUCT MEETS EUROPEAN UNION DIRECTIVES AND OTHER COUNTRY REGULATION AS DESCRIBED IN GS-22-008.



mat'l. code		surface ISO 1302 ✓	tolerance ISO 406 ISO 1101	projection INCH/MM	product family HEADER
ltr	ecn no dr	date		tolerances unless otherwise specified	
A	V92814	DAI	8/24/99	angles	.XX±.01/.3
B	V10891	GIP	1/25/02	linear	.XXX±.005/.13
C	V21476	GIP	9/18/02	0°±2'	.XXXX±.0020/.051
D	M05-0089	MHT	5/20/05	dr	D. INGRAM 7/07/99
E	M06-0286	ACS	7/29/06	enr	H. SUNDY 7/20/99
				chr	H. SUNDY 7/20/99
				appd	H. SUNDY 7/20/99
sheet index	revision sheet	E	1		

title  
 SHOROUDED HDR. .100  
 STACK, PCB to PCB

dwg no 64111 sheet 1 of 1 size A3

type Product Customer Drawing

Copyright FCI  
 FCconnect.com