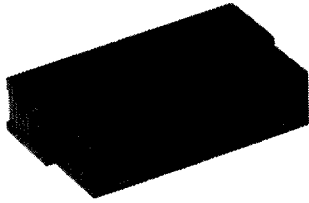


.100 [2.54] Centerline Double Row Receptacle Housings

With Center Polarization



Material:

Black thermoplastic, flame retardant, 94V-0 rated

Related Product Data:

Receptacle Contacts used with: Strip—page 4039

Mateable Pin Headers—Section 2, page 2074

Accessories:

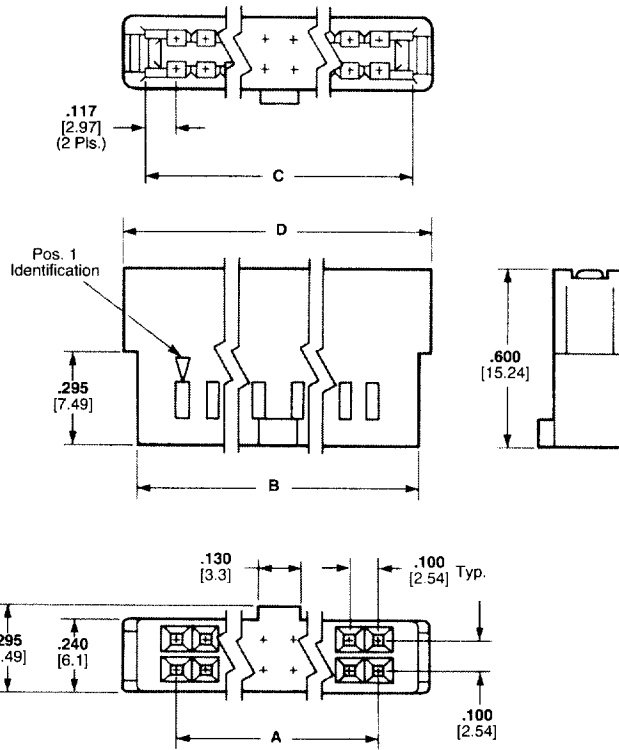
Keying Plugs—page 4052

Application Tooling—page 4059

Technical Documents:

Product Specification '08-9024

Application Specification '14-16015



No. of Positions	Dimensions				Part Numbers	
	A	B	C	D	Receptacle Housing	Extraction Tool
10	.400 10.16	.680 17.27	.634 16.1	.750 19.05	487223-1	1-91200-9
14	.600 15.24	.880 22.35	.834 21.18	.950 24.13	487223-2	—
16	.700 17.78	.980 24.89	.934 23.72	1.050 26.67	487223-3	—
20	.900 22.86	1.180 29.97	1.134 28.8	1.250 31.75	487223-5	91200-5
24	1.100 27.94	1.380 35.05	1.334 33.88	1.450 36.83	487223-6	—
26	1.200 30.48	1.480 37.59	1.434 36.42	1.550 39.37	487223-7	—
30	1.400 35.56	1.680 42.67	1.634 41.5	1.750 44.45	487223-8	—
34	1.600 40.64	1.880 47.75	1.834 46.58	1.950 49.53	487223-9	—
40	1.900 48.26	2.180 55.37	2.134 54.2	2.250 57.15	1-487223-0	—
50	2.400 60.96	2.680 68.07	2.634 66.9	2.750 69.85	1-487223-2	2-91200-0
60	2.900 73.66	3.180 80.77	3.134 79.6	3.250 82.55	1-487223-5	—

- Notes:**
1. Tin plated contacts are not recommended for use in receptacle housings larger than 40-position.
 2. Other housing sizes can be made available, consult Tyco Electronics.
 3. Use Extraction Tool, Part Number 91093-1, for round wire contacts.

For complete product information, order Catalog 82007