

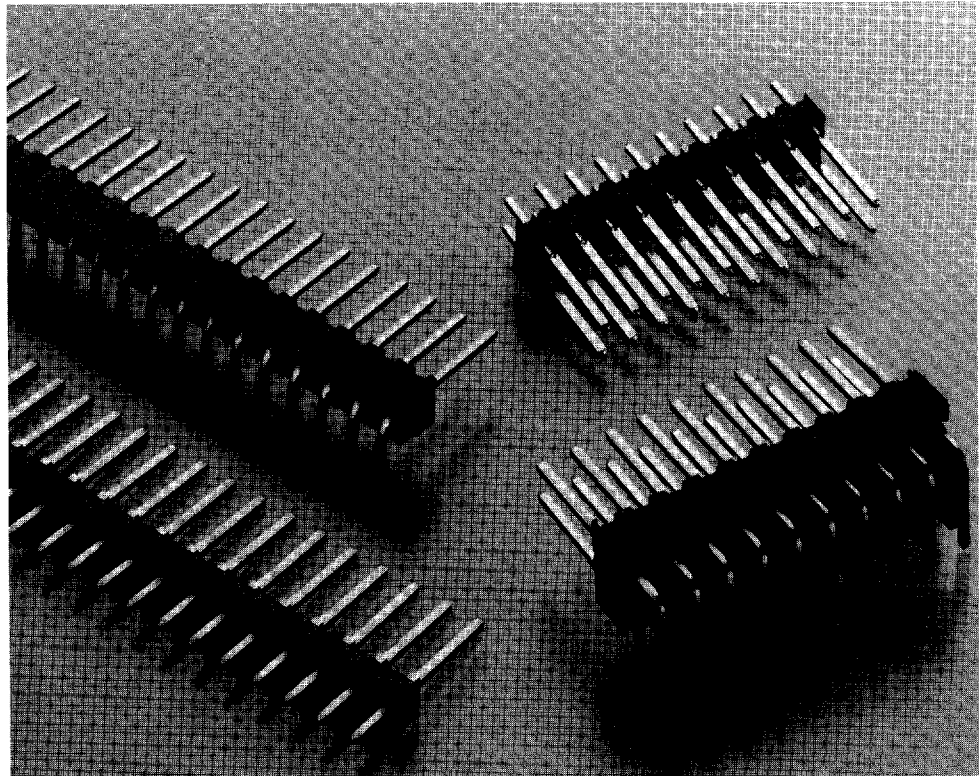


Standard Headers—Unshrouded

Product Facts

- Variety of popular sizes available
- Substantial time/labor savings—install all posts at one time
- Vertical and right-angle versions available in single- and double-row configurations
- Triple-row version available in vertical configuration with .230 [5.84] mating length
- Copper alloy posts
- Choice of select gold or tin-lead plated posts
- Mating length for single and double row is .318 [8.08]
- Flame retardant, black thermoplastic housings; 94V-0 rated
- Recognized under the Component Program of Underwriters Laboratories Inc., File No. E28476 
- Certified by Canadian Standards Association, File No. LR 7189 



Performance Characteristics

Electrical:

Insulation Resistance—5,000 megohms minimum initial

Dielectric Withstanding Voltage—750 V rms at sea level

Environmental:

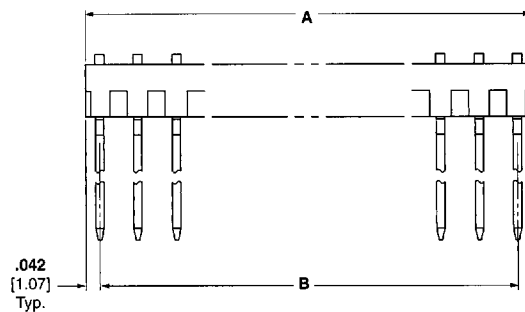
Operating Temperature—
-65°C to +105°C (black thermoplastic housings)

Current—3 amperes maximum per contact

Standard Headers—
Unshrouded

Standard Headers—Unshrouded, Single-Row, .100 [2.54] Centers (Continued)

.025 [0.64] Square Right-Angle Post



Material and Finish:

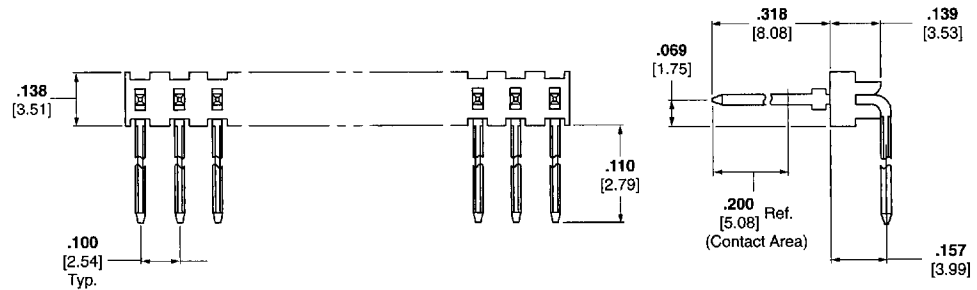
Housing—Black thermoplastic, 94V-0 rated

Posts—Copper alloy, plated as follows:

Plating A—Selectively plated .000030 [0.00076] gold on contact area, with gold flash over .000050 [0.00127] nickel on entire post

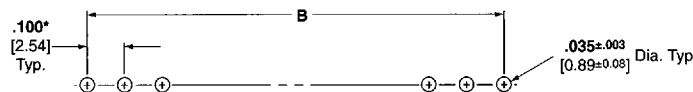
Plating B—Selectively plated .000015 [0.00038] gold on contact area, with gold flash over .000050 [0.00127] nickel on entire post

Tin-Lead/Nickel—Plating option available; minimum order quantities may apply. Consult AMP Incorporated



Related Product Data:

Mateable Connectors—Refer to the Mating Post Selection Guide (Page 6 or 218)



Technical Documents:

Page 213

Additional header sizes, plating options and post lengths are available; minimum order quantities may apply. Consult AMP Incorporated.

Recommended PC Board Hole Layout

*±.003 [±0.08] tolerances not to accumulate within one connector pattern.

No. of Pos.	Dimensions		Post Plating/Part Nos.	
	A	B	Plating A	Plating B
1	.084 2.13	—	87232-1	87233-1
2	.184 4.67	.100 2.54	87232-2	87233-2
3	.284 7.21	.200 5.08	87232-3	87233-3
4	.384 9.75	.300 7.62	87232-4	87233-4
5	.484 12.29	.400 10.16	87232-5	87233-5
6	.584 14.83	.500 12.70	87232-6	87233-6
7	.684 17.37	.600 15.24	87232-7	87233-7
8	.784 19.91	.700 17.78	87232-8	87233-8
9	.884 22.45	.800 20.32	87232-9	87233-9
10	.984 24.99	.900 22.86	1-87232-0	1-87233-0
40	3.984 101.19	3.900 99.06	4-87232-0	4-87233-0