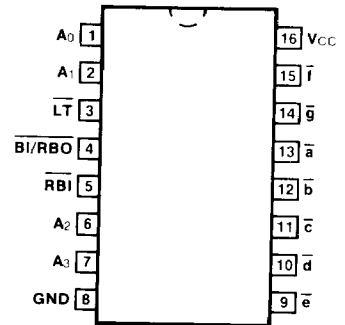


54LS/74LS347 ✓ 034690

BCD TO 7-SEGMENT DECODER/DRIVER

CONNECTION DIAGRAM PINOUT A

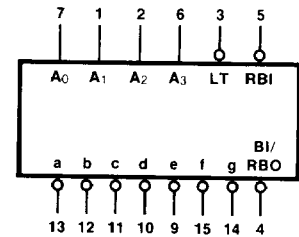


DESCRIPTION — The '347 is the same as the '47 except that the Output OFF Voltage, V_{OH} , is specified as 7.0 V rather than 15 V, with the same I_{OH} limit of 250 μ A. For all other information please refer to the '47 data sheet.

ORDERING CODE: See Section 9

| PKGS | PIN OUT | COMMERCIAL GRADE | MILITARY GRADE | PKG TYPE |
|-----------------|---------|--|--|----------|
| | | $V_{CC} = +5.0 \text{ V} \pm 5\%$, $T_A = 0^\circ \text{ C to } +70^\circ \text{ C}$ | $V_{CC} = +5.0 \text{ V} \pm 10\%$, $T_A = -55^\circ \text{ C to } +125^\circ \text{ C}$ | |
| Plastic DIP (P) | A | 74LS347PC | | 9B |
| Ceramic DIP (D) | A | 74LS347DC | 54LS347DM | 7B |
| Flatpak (F) | A | 74LS347FC | 54LS347FM | 4L |

LOGIC SYMBOL



$V_{CC} = \text{Pin } 16$
 $\text{GND} = \text{Pin } 8$

INPUT LOADING/FAN-OUT: See Section 3 for U.L. definitions

| PIN NAMES | DESCRIPTION | 54/74LS HIGH/LOW |
|-------------------------------|---|--------------------------|
| $A_0 - A_3$ | BCD Inputs | 0.5/0.25 |
| $\overline{\text{RBI}}$ | Ripple Blanking Input (Active LOW) | 0.5/0.25 |
| $\overline{\text{LT}}$ | Lamp Test Input (Active LOW) | 0.5/0.25 |
| $\overline{\text{BI/RBO}}$ | Blanking Input (Active LOW) or Ripple Blanking Output (Active LOW) | -/0.75 1.25/2.0 |
| $\overline{a} - \overline{g}$ | Segment Outputs (Active LOW) | (1.0) OC*/15 (7.5) |

*OC — Open Collector