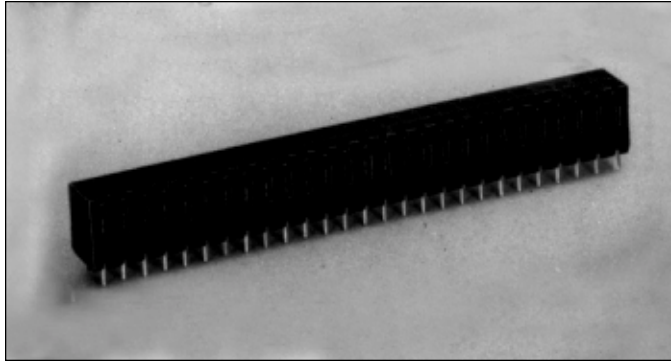


.100" (2.54mm) Dual Row Through Hole Right Angle Connectors



9000 SERIES "POST/BOXE"

PART NUMBER LEGEND

90XX-2XX-302

NUMBER OF POSITIONS PER ROW

2- 40

CONTACT FINISH

0 = TIN

8 = .000030 SELECTIVE GOLD

F = .000015 SELECTIVE GOLD

INSULATOR MATERIAL

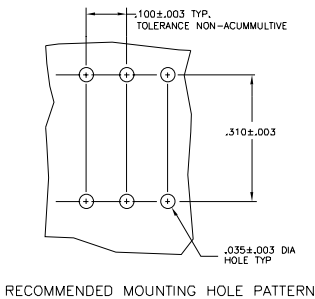
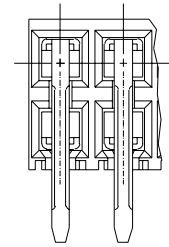
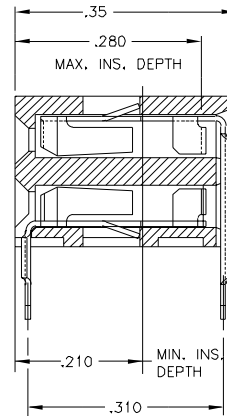
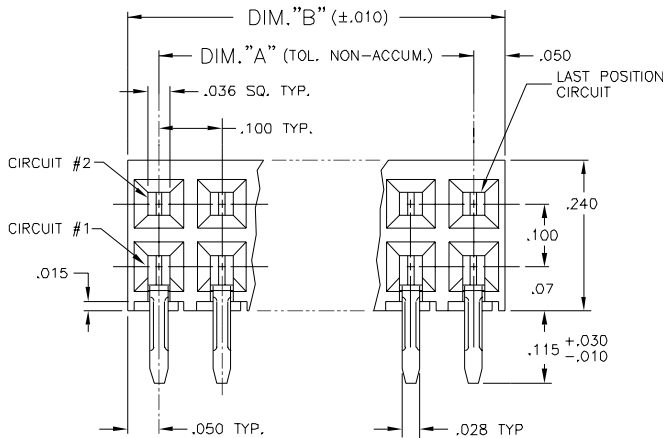
SEE NOTE 1

MATING HEADERS: 9100 SERIES

NOTES:

- INSULATOR MATERIAL:
 900X: POLYESTER (PBT), 30% G/R, UL 94V-0
 901X: POLYESTER (PCT), 30% G/R, UL 94V-0
 CONTACT MATERIAL: PHOSPHOR BRONZE.
- CONTACT FINISH:
 90X0 - TIN LEAD OVER NICKEL PLATE
 90X8 - .000030 SELECTIVE GOLD PLATE IN CONTACT AREA OVER .000050/.000150 NICKEL PLATE; TIN PLATE ON SOLDER TAILS.
 90XF - .000015 SELECTIVE GOLD PLATE IN CONTACT AREA OVER .000050/.000150 NICKEL PLATE; TIN PLATE ON SOLDER TAILS.

ADDITIONAL SPECIFICATIONS



No. OF CKTS.	PART No.	DIM "A"	DIM "B"
2	90XX-201-302	---	.100
4	202	.100	.200
6	203	.200	.300
8	204	.300	.400
10	205	.400	.500
12	206	.500	.600
14	207	.600	.700
16	208	.700	.800
18	209	.800	.900
20	210	.900	1.000
22	211	1.000	1.100
24	212	1.100	1.200
26	213	1.200	1.300
28	214	1.300	1.400
30	215	1.400	1.500
32	216	1.500	1.600
34	217	1.600	1.700
36	218	1.700	1.800
38	219	1.800	1.900
40	220	1.900	2.000
42	221	2.000	2.100
44	90XX-222-302	2.100	2.200

No. OF CKTS.	PART No.	DIM "A"	DIM "B"
46	90XX-223-302	2.200	2.300
48	224	2.300	2.400
50	225	2.400	2.500
52	226	2.500	2.600
54	227	2.600	2.700
56	228	2.700	2.800
58	229	2.800	2.900
60	230	2.900	3.000
62	231	3.000	3.100
64	232	3.100	3.200
66	233	3.200	3.300
68	234	3.300	3.400
70	235	3.400	3.500
72	236	3.500	3.600
74	237	3.600	3.700
76	238	3.700	3.800
78	239	3.800	3.900
80	240	3.900	4.000
82	241	4.000	4.100
84	242	4.100	4.200
86	243	4.200	4.300
88	90XX-244-302	4.300	4.400

No. OF CKTS.	PART No.	DIM "A"	DIM "B"
90	90XX-245-302	4.400	4.500
92	246	4.500	4.600
94	247	4.600	4.700
96	248	4.700	4.800
98	249	4.800	4.900
100	250	4.900	5.000
102	251	5.000	5.100
104	252	5.100	5.200
106	253	5.200	5.300
108	254	5.300	5.400
110	255	5.400	5.500
112	256	5.500	5.600
114	257	5.600	5.700
116	258	5.700	5.800
118	259	5.800	5.900
120	260	5.900	6.000
122	261	6.000	6.100
124	262	6.100	6.200
126	263	6.200	6.300
128	264	6.300	6.400
130	90XX-265-302	6.400	6.500