

APPLICATIONS

- Induction Heating.
- A.C. Motor Drives.
- Snubber Diode.
- Welding.
- High Frequency Rectification.
- UPS.

KEY PARAMETERS

V_{RRM}	2500V
$I_{F(AV)}$	145A
I_{FSM}	2500A
Q_r	150 μ C
t_{rr}	2.2 μ s

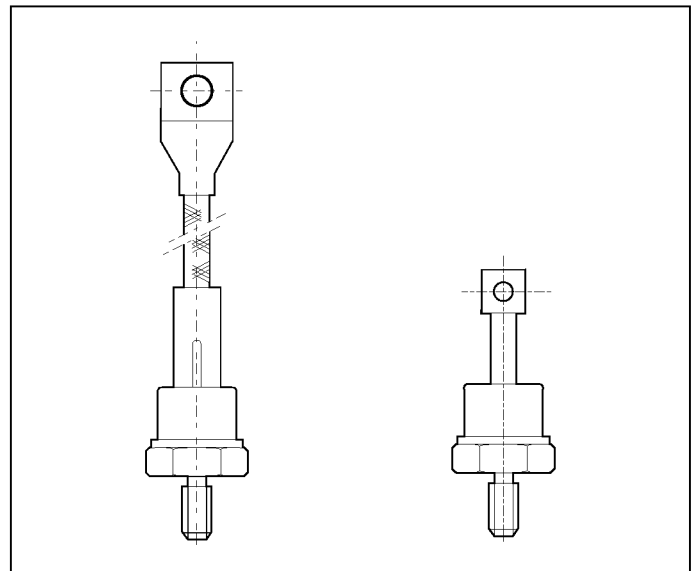
FEATURES

- Double Side Cooling.
- High Surge Capability.
- Low Recovery Charge.

VOLTAGE RATINGS

Type Number	Repetitive Peak Reverse Voltage V_{RRM} V	Conditions
SV05 25F M or K SV05 24F M or K SV05 22F M or K SV05 20F M or K	2500 2400 2200 2000	$V_{RSM} = V_{RRM} + 100V$

For 1/2" 20 UNF thread, add suffix K, e.g. SV05 25FK.
 For M12 thread, add suffix M, e.g. SV05 25FM.
 For stud anode add 'R' to type number, e.g. SV05 25FMR.
 For outline DO8C add suffix 'C' to typ number,
 e.g. SV05 25FKC.



Outline type codes: DO8 and DO8C.
 TSee package outlines for further information.

CURRENT RATINGS

Symbol	Parameter	Conditions	Max.	Units
$I_{F(AV)}$	Mean forward current	Half wave resistive load, $T_{case} = 65^{\circ}C$	145	A
$I_{F(RMS)}$	RMS value	$T_{case} = 65^{\circ}C$	225	A
I_F	Continuous (direct) forward current	$T_{case} = 65^{\circ}C$	195	A

SV05..F

SURGE RATINGS

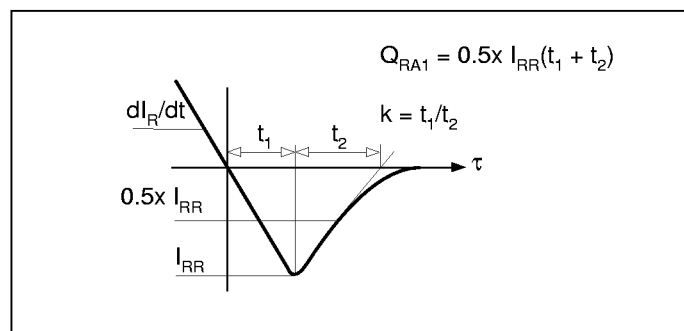
Symbol	Parameter	Conditions	Max.	Units
I_{FSM}	Surge (non-repetitive) forward current	10ms half sine; with 0% V_{RRM} , $T_j = 150^\circ\text{C}$	2.5	kA
I^2t	I^2t for fusing		31×10^3	A^2s
I_{FSM}	Surge (non-repetitive) forward current	10ms half sine; with 50% V_{RRM} , $T_j = 150^\circ\text{C}$	2.0	kA
I^2t	I^2t for fusing		20×10^3	A^2s

THERMAL AND MECHANICAL DATA

Symbol	Parameter	Conditions	Min.	Max.	Units
$R_{th(j-c)}$	Thermal resistance - junction to case	dc	-	0.23	$^\circ\text{C}/\text{W}$
$R_{th(c-h)}$	Thermal resistance - case to heatsink	Mounting torque 15Nm with mounting compound	-	0.02	$^\circ\text{C}/\text{W}$
T_{vj}	Virtual junction temperature	On-state (conducting)	-	150	$^\circ\text{C}$
T_{stg}	Storage temperature range		-55	150	$^\circ\text{C}$
-	Mounting torque		13.5	16.5	Nm

CHARACTERISTICS

Symbol	Parameter	Conditions	Typ.	Max.	Units
V_{FM}	Forward voltage	At 600A peak, $T_{case} = 25^{\circ}C$	-	2.8	V
I_{RRM}	Peak reverse current	At V_{RRM} , $T_{case} = 150^{\circ}C$	-	50	mA
t_{rr}	Reverse recovery time	$I_F = 600A$, $di_{RR}/dt = 80A/\mu s$ $T_{case} = 150^{\circ}C$, $V_R = 100V$	2.2	-	μs
Q_{RA1}	Recovered charge (50% chord)		-	150	μC
I_{RM}	Reverse recovery current		-	140	A
K	Soft factor		-	-	-
V_{TO}	Threshold voltage	At $T_{vj} = 150^{\circ}C$	-	1.4	V
r_T	Slope resistance	At $T_{vj} = 150^{\circ}C$	-	2.5	$m\Omega$
V_{FRM}	Forward recovery voltage	$di/dt = 1000A/\mu s$, $T_j = 125^{\circ}C$	-	250	V

DEFINITION OF K FACTOR AND Q_{RA1} 

SV05..F

CURVES

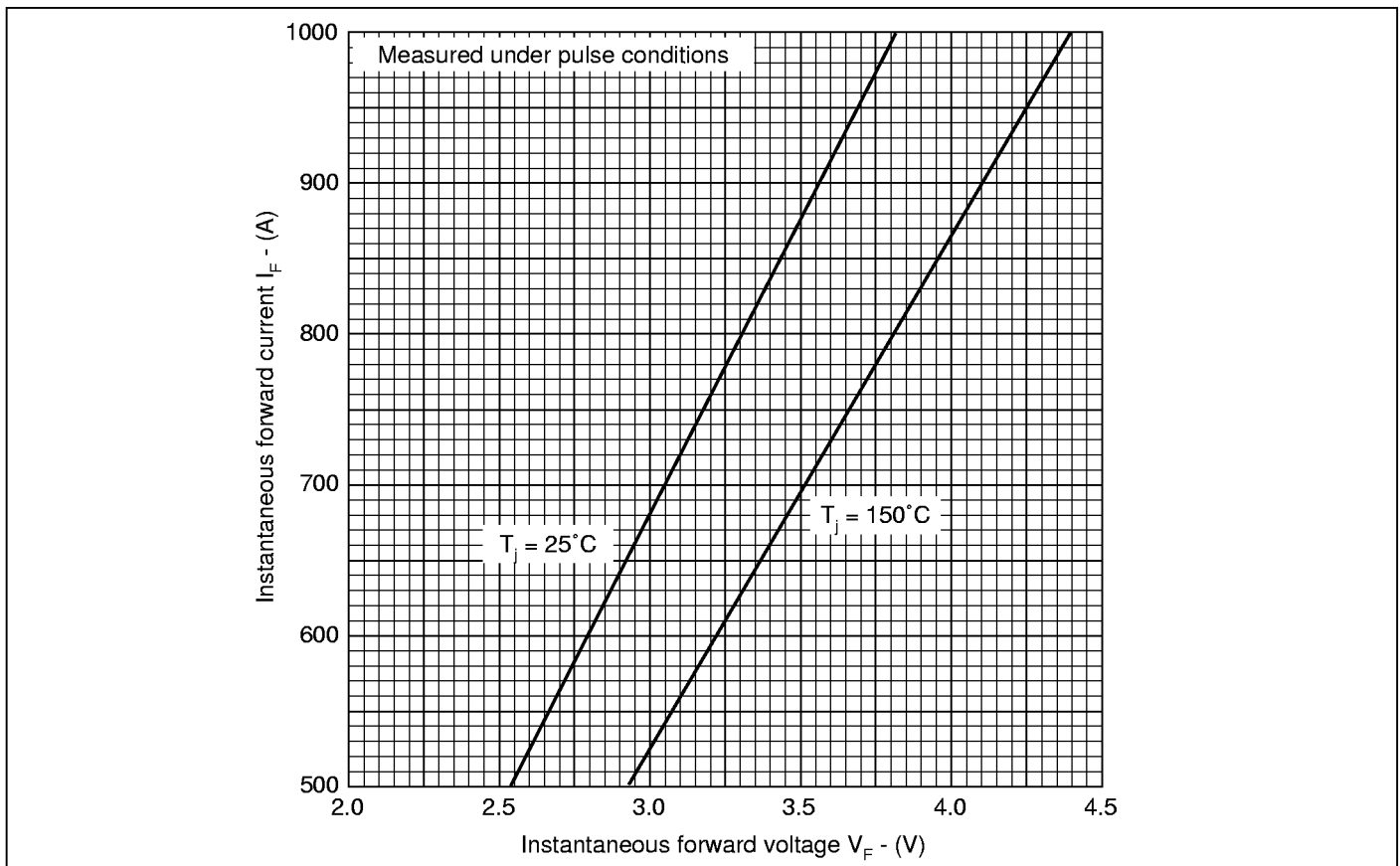


Fig.1 Maximum (limit) forward characteristics

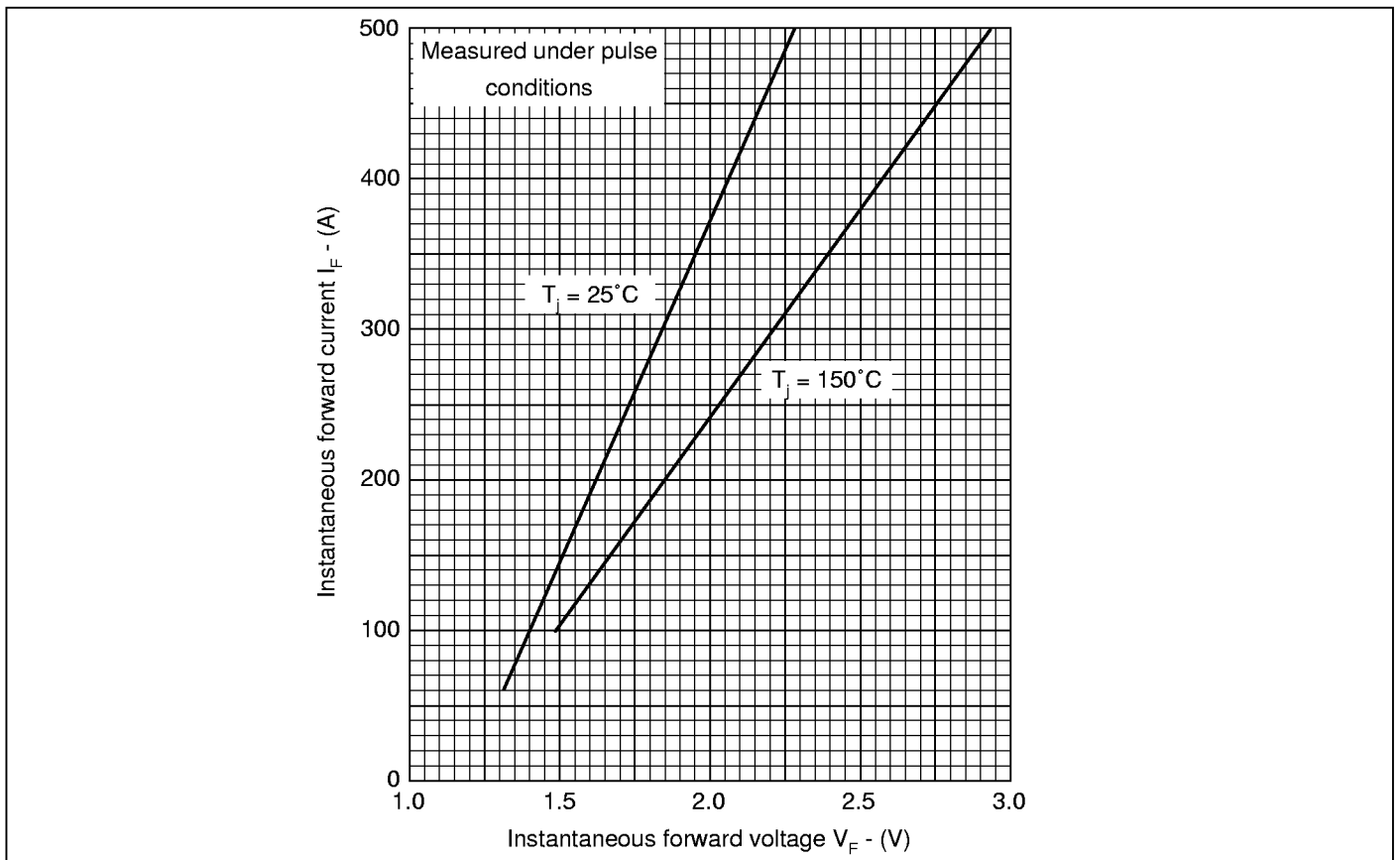


Fig.2 Maximum (limit) forward characteristics

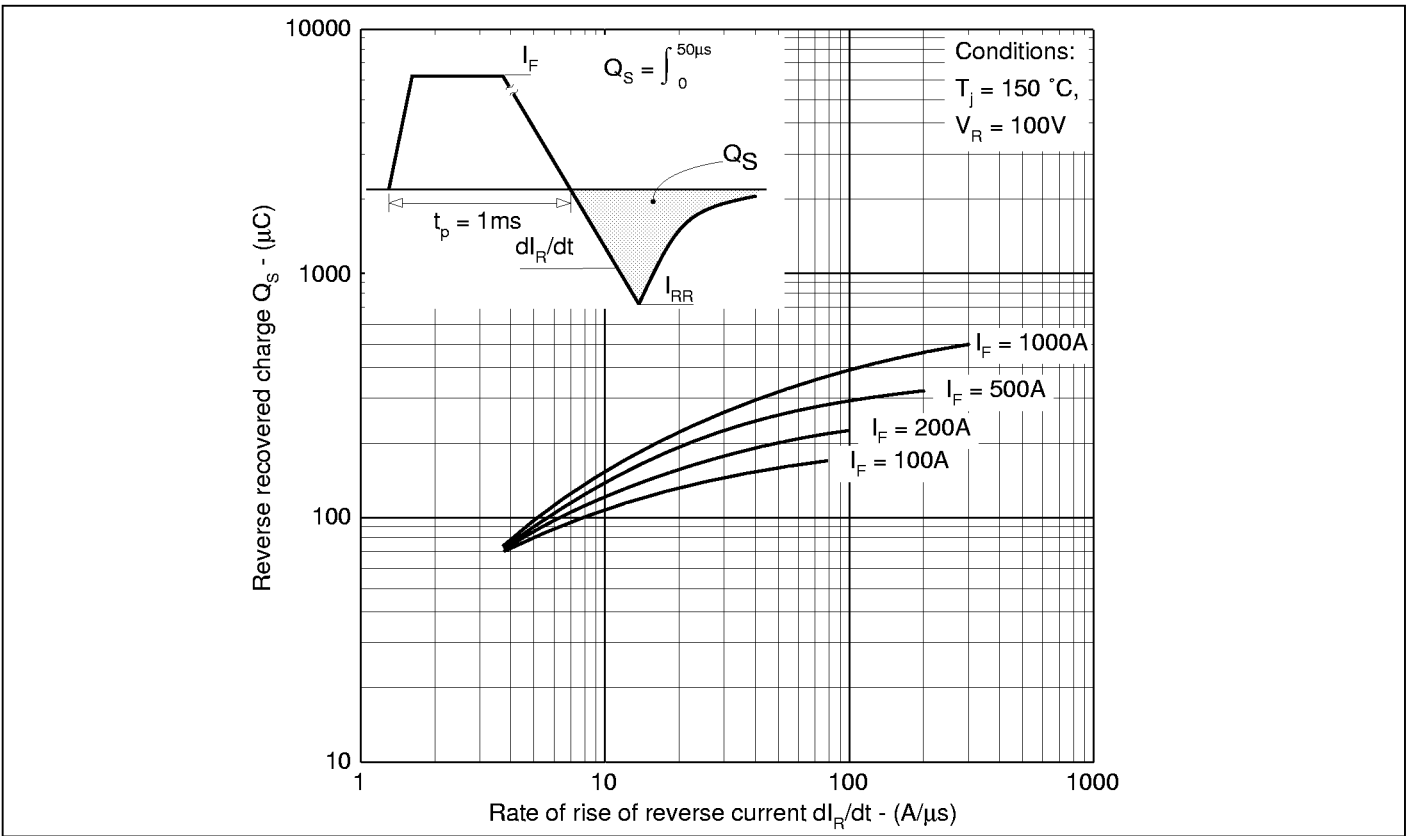


Fig.3 Recovered charge

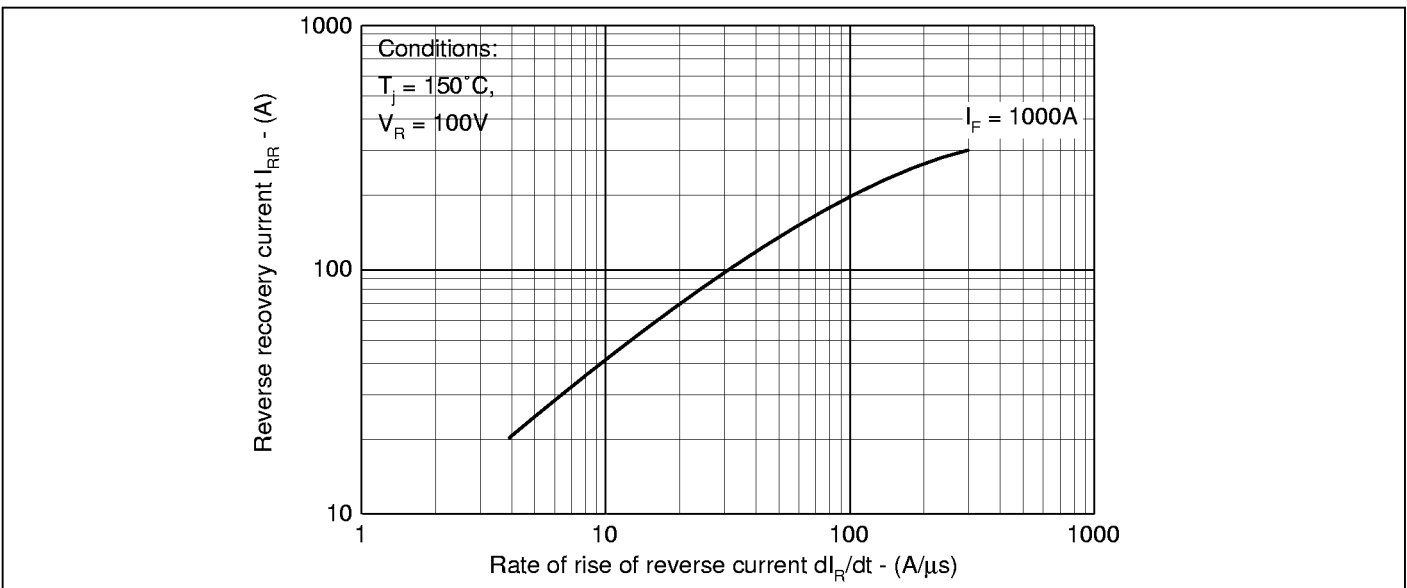


Fig.4 Typical reverse recovery current vs rate of rise of reverse current

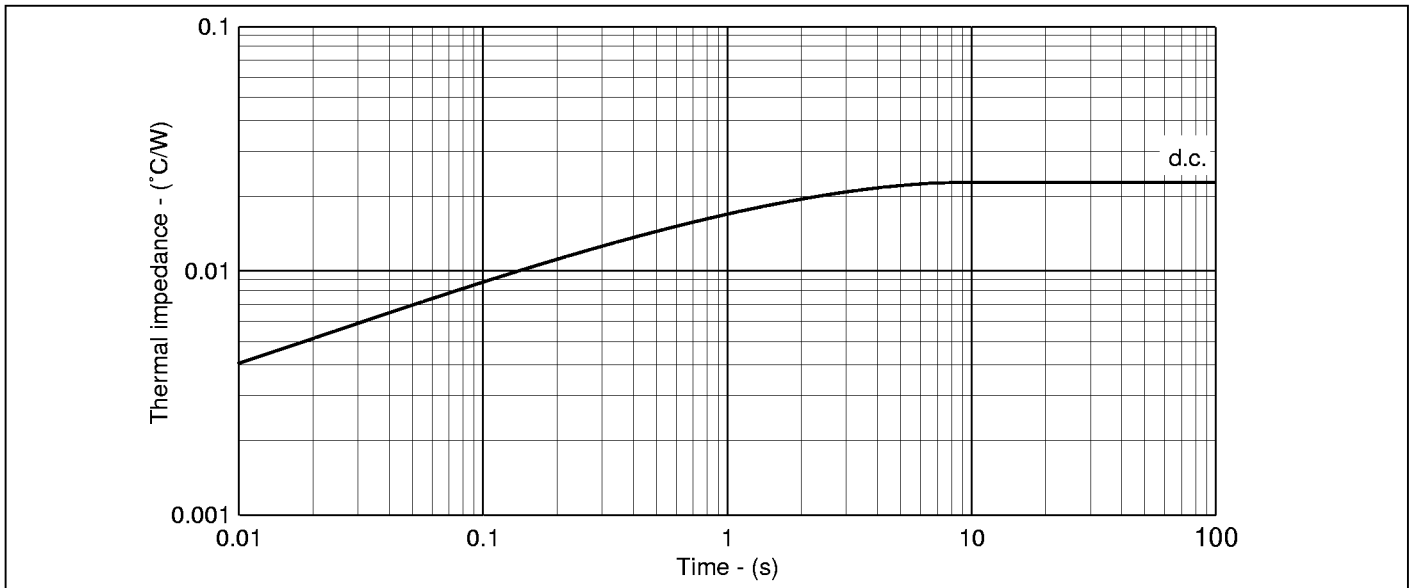
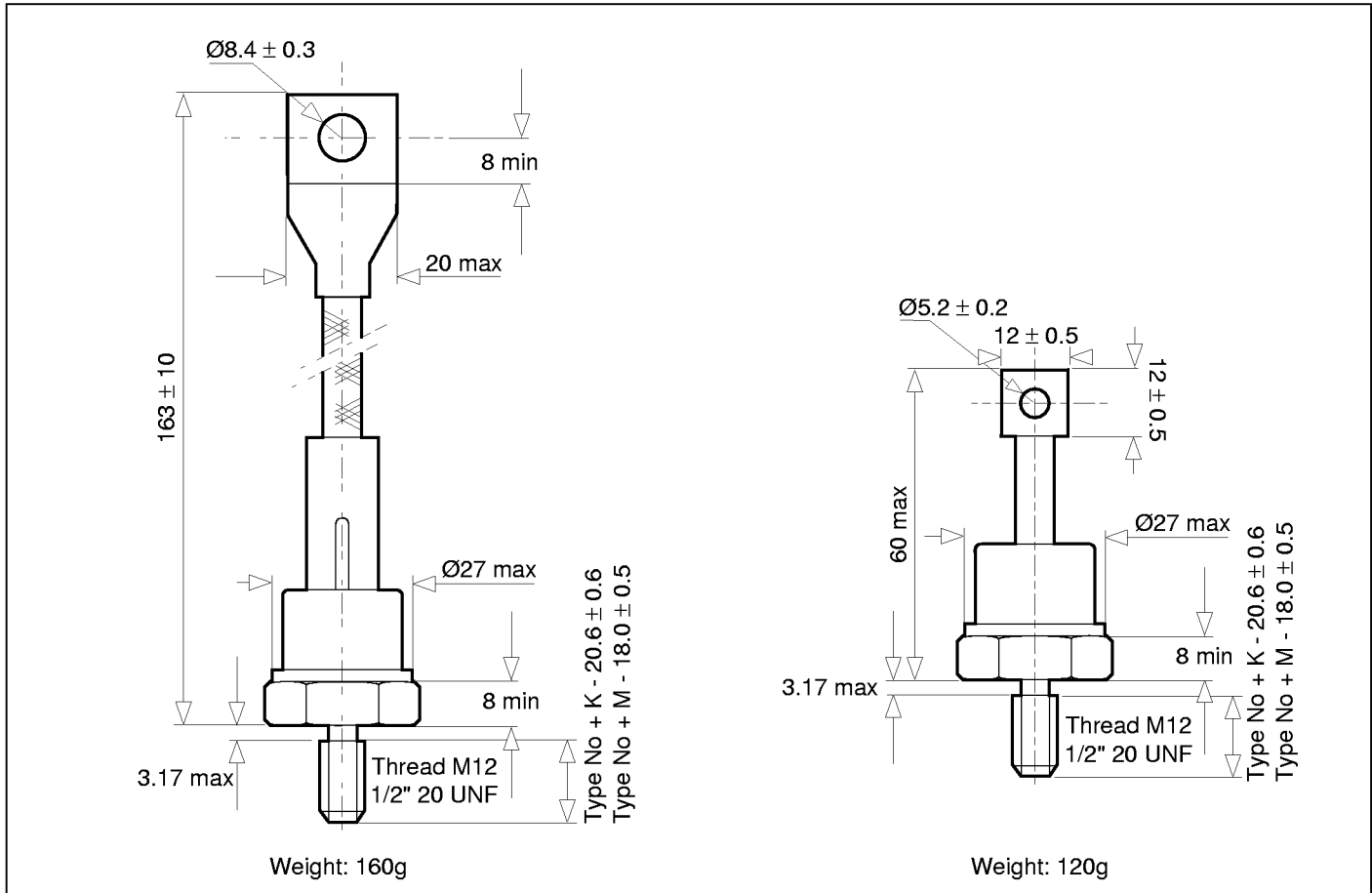


Fig.5 Maximum (limit) transient thermal impedance - junction to case - (°C/W)

SV05..F

PACKAGE DETAILS - DO8 and DO8C

For further package information, please contact your local Customer Service Centre. All dimensions in mm, unless stated otherwise. DO NOT SCALE.



HEADQUARTERS OPERATIONS
MITEL SEMICONDUCTOR
Cheney Manor, Swindon,
Wiltshire SN2 2QW, United Kingdom.
Tel: (01793) 518000
Fax: (01793) 518411

MITEL SEMICONDUCTOR
1500 Green Hills Road,
Scotts Valley, California 95066-4922
United States of America.
Tel (408) 438 2900
Fax: (408) 438 5576/6231

Internet: <http://www.gpsemi.com>

POWER PRODUCT CUSTOMER SERVICE CENTRES

- **FRANCE, BENELUX & SPAIN** Les Ulis Cedex Tel: (1) 69 18 90 00 Fax : (1) 64 46 54 50
- **GERMANY** Munich Tel: (089) 419508-20 Fax : (089) 419508-55
- **NORTH AMERICA** Dedham, USA Tel: (781) 251 0126 Fax: (781) 251 0106
- **UK** Lincoln Tel: (01522) 500500 Fax : (01522) 510550

These are supported by Agents and Distributors in major countries world-wide.

© Mitel Corporation 1998 Publication No. DS4144-3 Issue No. 3.4 March 1998

TECHNICAL DOCUMENTATION – NOT FOR RESALE. PRINTED IN UNITED KINGDOM

This publication is issued to provide information only which (unless agreed by the Company in writing) may not be used, applied or reproduced for any purpose nor form part of any order or contract nor to be regarded as a representation relating to the products or services concerned. No warranty or guarantee express or implied is made regarding the capability, performance or suitability of any product or service. The Company reserves the right to alter without prior notice the specification, design or price of any product or service. Information concerning possible methods of use is provided as a guide only and does not constitute any guarantee that such methods of use will be satisfactory in a specific piece of equipment. It is the user's responsibility to fully determine the performance and suitability of any equipment using such information and to ensure that any publication or data used is up to date and has not been superseded. These products are not suitable for use in any medical products whose failure to perform may result in significant injury or death to the user. All products and materials are sold and services provided subject to the Company's conditions of sale, which are available on request.

All brand names and product names used in this publication are trademarks, registered trademarks or trade names of their respective owners.