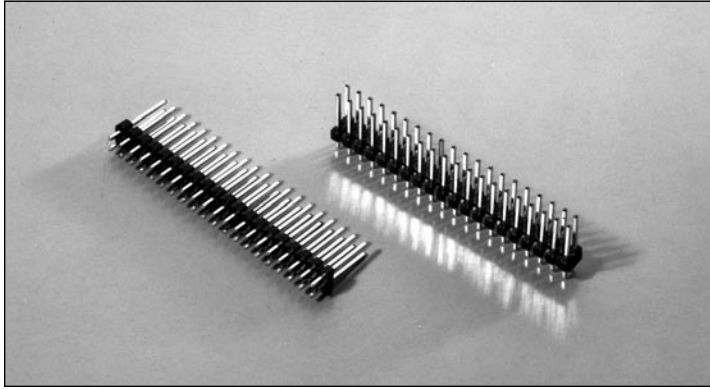


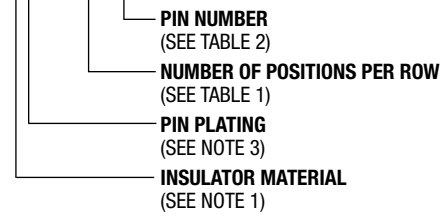
.100" (2.54mm) Dual Row, Through Hole, Vertical Header with Special Standoffs



9100 SERIES ("POST/BOXE")

PART NUMBER LEGEND

91XX-2-2XX-XX



MATING CONNECTORS: 9000 SERIES

NOTES:

- INSULATOR MATERIAL
 - 910X-2-2XX-XX - POLYESTER (PET), 30% GLASS REINFORCED, UL 94V-0, COLOR BLACK
 - 911X-2-2XX-XX - POLYESTER (PET), 30% GLASS REINFORCED, UL 94V-0, COLOR: BLACK
- PIN MATERIAL: PHOSPHOR BRONZE.
- PIN FINISH:
 - 910Q-2-2XX-XX: TIN OVER NICKEL PLATE.
 - 910Z-2-2XX-XX: .00015 GOLD OVER .00050 NICKEL PLATE.
 - 910T-2-2XX-XX: .00030 GOLD OVER .00050 NICKEL PLATE.
 - 910B-2-2XX-XX: .00050/.000150 NICKEL PLATE ALL OVER; .00030 GOLD PLATE AS INDICATED; .0001-.0002 90/10 TIN/LEAD PLATE ON SOLDER TAIL AS INDICATED.
 - 910E-2-2XX-XX: .00050/.000150 NICKEL PLATE ALL OVER; .00015 GOLD PLATE AS INDICATED; .0001-.0002 90/10 TIN/LEAD PLATE ON SOLDER TAIL AS INDICATED.
- ALL DIMENSIONS ARE IN IN./[MM]
- PIN RETENTION: 2 LB. MINIMUM.

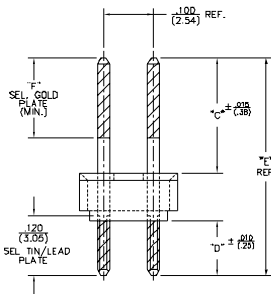
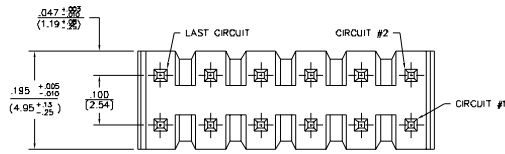


FIGURE 2
(FOR SEL. PLATED PINS ONLY)
P/N'S 91XB, 91XE, & 91XX-2-2XX-XX

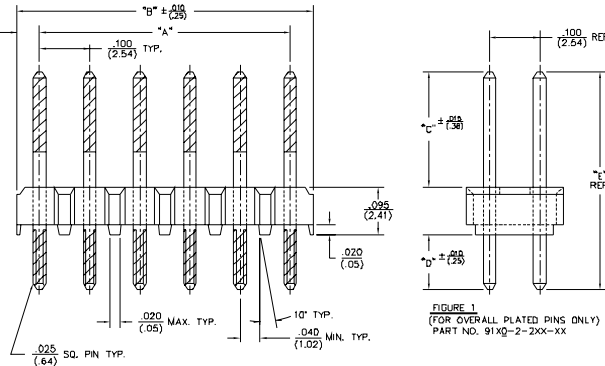
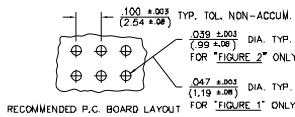


FIGURE 1
(FOR OVERALL PLATED PINS ONLY)
PART NO. 91XQ-2-2XX-XX



RECOMMENDED P.C. BOARD LAYOUT FOR "FIGURE 1" ONLY

TABLE 1

PART NUMBER	NO. OF CIRCUITS	DIM. A		DIM. B	
		IN	MM	IN	MM
91XX-2-202-XX	4	.100	2.54	.190	4.83
-203-	6	.200	5.08	.290	7.37
-204-	8	.300	7.62	.390	9.91
-205-	10	.400	10.16	.490	12.45
-206-	12	.500	12.70	.590	14.99
-207-	14	.600	15.24	.690	17.53
-208-	16	.700	17.78	.790	20.07
-209-	18	.800	20.32	.890	22.61
-210-	20	.900	22.86	.990	25.15
-211-	22	1.000	25.40	1.090	27.69
-212-	24	1.100	27.94	1.190	30.23
-213-	26	1.200	30.48	1.290	32.77
-214-	28	1.300	33.02	1.390	35.31
-215-	30	1.400	35.56	1.490	37.85
-216-	32	1.500	38.10	1.590	40.39
-217-	34	1.600	40.64	1.690	42.93
-218-	36	1.700	43.18	1.790	45.47
-219-	38	1.800	45.72	1.890	48.01
-220-	40	1.900	48.26	1.990	50.55
-221-	42	2.000	50.80	2.090	53.09
-222-	44	2.100	53.34	2.190	55.63
-223-	46	2.200	55.88	2.290	58.17
-224-	48	2.300	58.42	2.390	60.71
-225-	50	2.400	60.96	2.490	63.25
-226-	52	2.500	63.50	2.590	65.79
-227-	54	2.600	66.04	2.690	68.33
-228-	56	2.700	68.58	2.790	70.87
-229-	58	2.800	71.12	2.890	73.41
-230-	60	2.900	73.66	2.990	75.95
-231-	62	3.000	76.20	3.090	78.49
-232-	64	3.100	78.74	3.190	81.03
-233-	66	3.200	81.28	3.290	83.57
-234-	68	3.300	83.82	3.390	86.11
-235-	70	3.400	86.36	3.490	88.65
-236-	72	3.500	88.90	3.590	91.19
-237-	74	3.600	91.44	3.690	93.73
-238-	76	3.700	93.98	3.790	96.27
-239-	78	3.800	96.52	3.890	98.81
91XX-2-240-XX	80	3.900	99.06	3.990	101.35

TABLE 2

PART NUMBER	DIM "C"	DIM "D"	DIM "E"	DIM "F"
91XX-2-2XX-01	.230 (5.84)	.110 (2.78)	.440 (11.18)	.185 MIN. (4.70)
91XX-2-2XX-02	.285 (7.29)	.230 (5.84)	.625 (15.88)	—
91XX-2-2XX-03	.300 (7.62)	.045 (1.16)	.440 (11.18)	—
91XX-2-2XX-04	.285 (7.29)	.125 (3.18)	.625 (15.88)	.200 (5.08)
91XX-2-2XX-05	.430 (10.92)	.115 (2.93)	.840 (21.33)	.200 (5.08)
91XX-2-2XX-06	.385 (9.78)	.110 (2.78)	.840 (21.33)	.200 (5.08)
91XX-2-2XX-07	.453 (11.50)	.453 (11.50)	1.000 (25.40)	.200 (5.08)