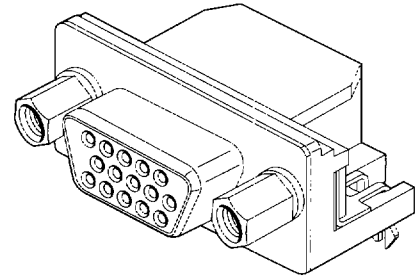




.350" Footprint D-Subminiature Receptacle

87112 High Density, Female PCB-Mount



Preferred Version in Europe and the Far East

FEATURES AND SPECIFICATIONS

Features and Benefits

- EMI/RFI suppression
- High-density design offers PC board space savings
- 15 circuit, shell size E (#1)
- Fork boardlock ensures connector is secure prior to wave soldering
- Intermateable with industry standard high-density D-Subminiature crimp connectors
- Available with voided circuit — contact factory

Reference Information

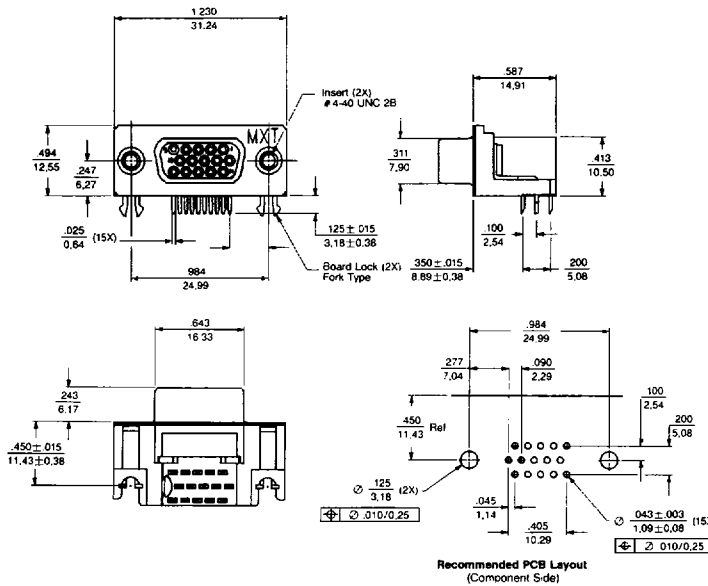
Product Specification: PS-87112
 Packaging: Tube
 UL File No.: E29179(N)
 CSA File No.: LR19980
 Designed In: Millimeters

Electrical

Current: 1.0A
 Contact Resistance: 15mΩ max.
 Dielectric Withstanding Voltage: 1000V
 Insulation Resistance: 1000 MΩ min.

Physical

Housing: Glass-filled PET, UL 94V-0
 Contact: Phosphor Bronze
 Plating: Selective Gold in contact area with Tin/Lead on PC tails
 Temperature: -55 to +105°C



Recommended PCB Layout
(Component Side)

inch
mm

Shielded I/O

ORDERING INFORMATION

Order No.	Contact Plating Code	Face Mounting Hardware
87112-6042	0.76μm (30μ") Gold	Flush insert (threaded)
87112-6052	0.38μm (15μ") Gold	Flush insert (threaded)
87112-6062	Gold Flash	Flush insert (threaded)
87112-6044	0.76μm (30μ") Gold	Removable hex screwlock
87112-6054	0.38μm (15μ") Gold	Removable hex screwlock
87112-6064	Gold Flash	Removable hex screwlock