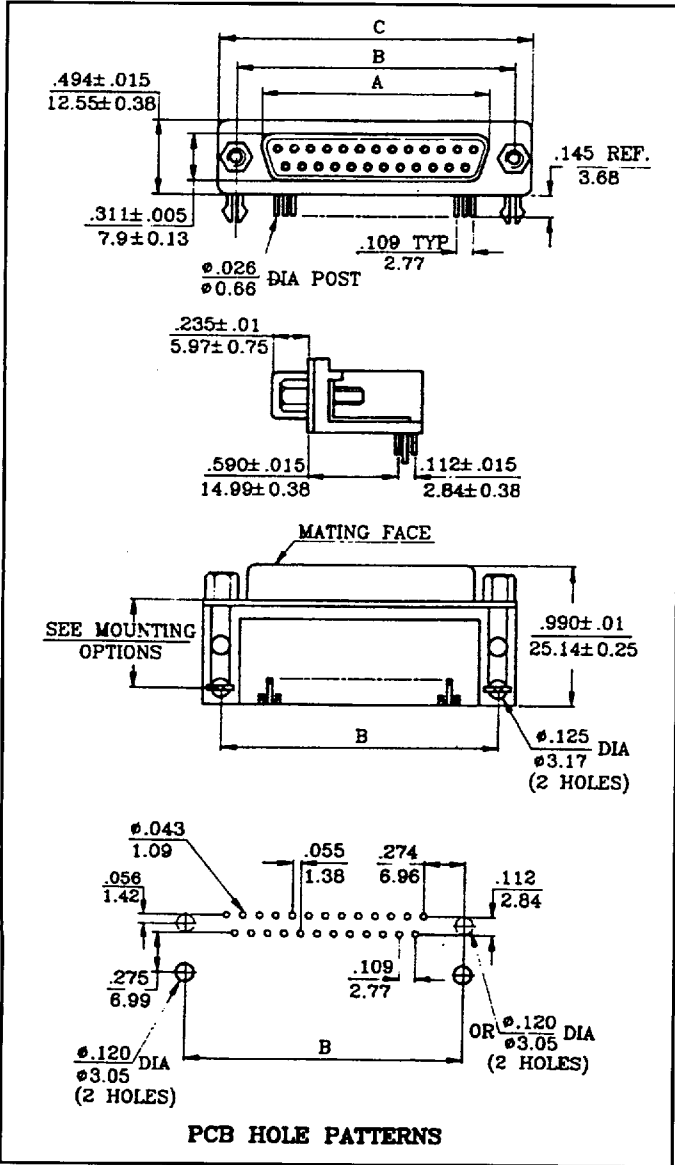


D-SUBMINIATURE CONNECTOR RIGHT ANGLE SHROUDED .590 FOOTPRINT



FEATURES AND OPTIONS

- Available in 9, 15, 25 and 37 positions
- Male and female versions
- Available with hardware options such as threaded inserts, hex stand-offs, board locks and grounding straps
- Gold plated contacts
- Tin plated shell



SPECIFICATIONS

MATERIALS

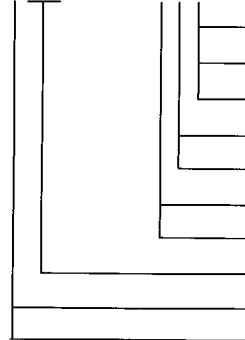
Shell: Tin plated steel
 Insulator: PBT thermo plastic, black color, 30% glass filled self-extinguishing, UL94V-0 rated
 Contact material: Pin: Brass
 Socket: Phosphor Bronze
 Contact plating: Gold over nickel

ELECTRICAL

Current rating: 5.0 Amps
 Dielectric strength: 1000Vac min.
 Insulation resistance: 5000M ohm min.
 Operating temperature range: -55°C to $+125^{\circ}\text{C}$

HOW TO ORDER

ADXXXX-KG-TXXX5



- B = Boardlocks
- G = Groundstraps
- X = Neither
- S = Hex stand-offs
- X = Without
- A = Threaded inserts
- X = Without
- XX = Number of contacts
- S = Male connector
- F = Female connector

DIMENSIONS

# of pins	A	B	C
9	16.33	24.99	30.81
	0.643	0.984	1.213
15	24.66	33.32	39.14
	0.971	1.312	1.541
25	38.38	47.04	53.04
	1.511	1.852	2.088
37	54.84	63.50	69.32
	2.159	2.500	2.729