

MAJOR LEAGUE ELECTRONICS

2mm (.079") c.l. Board Stacker Socket Strips



BSSH-2 - - - - -

H High Temp.

Pins per row 01-50

Singles S
Doubles D

Lead Style Options

Body	Tail	
(8,23) .324	(2,31) .091	02
	(6,32) .249	04
	(10,13) .399	06
(9,73) .383	(4,83) .190	08
	(8,64) .340	10
(11,23) .442	(3,33) .131	12
	(7,14) .281	14

(Metric Dimensions)

Plating Options

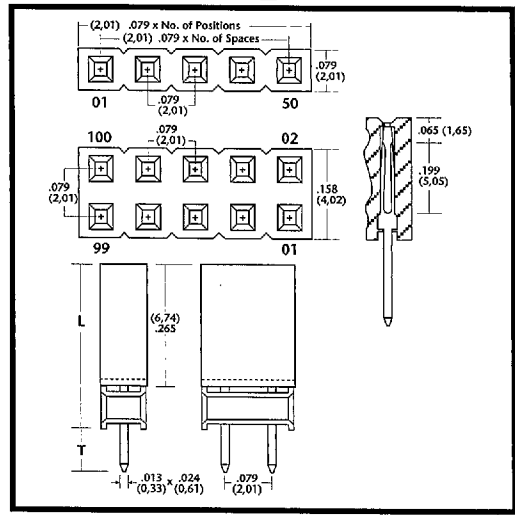
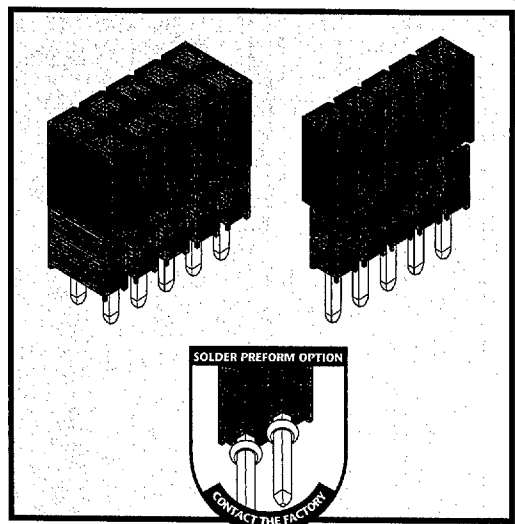
G = 10μ in gold in contact area, gold flash on tail
 GT = 10μ in gold in contact area, 200μ in tin/lead on tail
 H = 30μ gold on contact area, 200μ in tin/lead on tail
 T = 200μ in tin/lead over entire pin

Other plating available upon request

Lock Tight Option
 Two tails per strip are crimped in opposing directions on or near the centerline. Must have a minimum tail dimension of .090".
 N/A with Single Row (1 or 2 positions) & Double Row (1 position. Recommended hole size of .032".

Position for Polarization Option 001-100

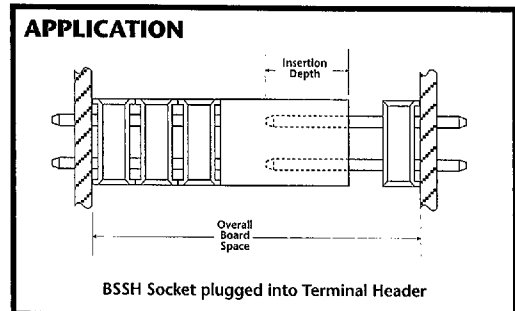
Mates with: TSHS, TSHR, TSHC, BSTS, BSTC, TSHCR, TSHSM, BSTCM



2 mm

EXAMPLE: To order a dual row, 24 position, board stacking socket that is .324" tall with a .249" tail and is selectively plated then you would order a **BSSH-224-D-04-GT**.

EXAMPLE: To elevate the board .442" with a .131" tail with a high temperature material, a 40 position, single row, tin plated part, order a **HBSH-240-S-12-T**.



Product cut to specific sizes is noncancellable/nonreturnable. Parts are subject to change without notice.

Materials & Performance Specifications

	STANDARD	HIGH TEMPERATURE
Insulator	Black, glass filled, polyester	High temperature thermoplastic
Terminal	Phosphor Bronze	Phosphor Bronze
Insulation Resistance	5,000M Ω minimum	5,000M Ω minimum
Flammability	UL 94V-O	UL 94V-O
Temperature Range	-65°C to +125°C	-65°C to +250°C
Current Rating	1 ampere	1 ampere
Plating	All Plating Options over 50μ in Ni	All Plating Options over 50μ in Ni



Delivery On Time Every Time... Or The Order's Free!

D 24F 9019296 0000049 677

phone: 812-944-7244 • Facsimile: 812-944-7268 • Email: mle@iglou.com