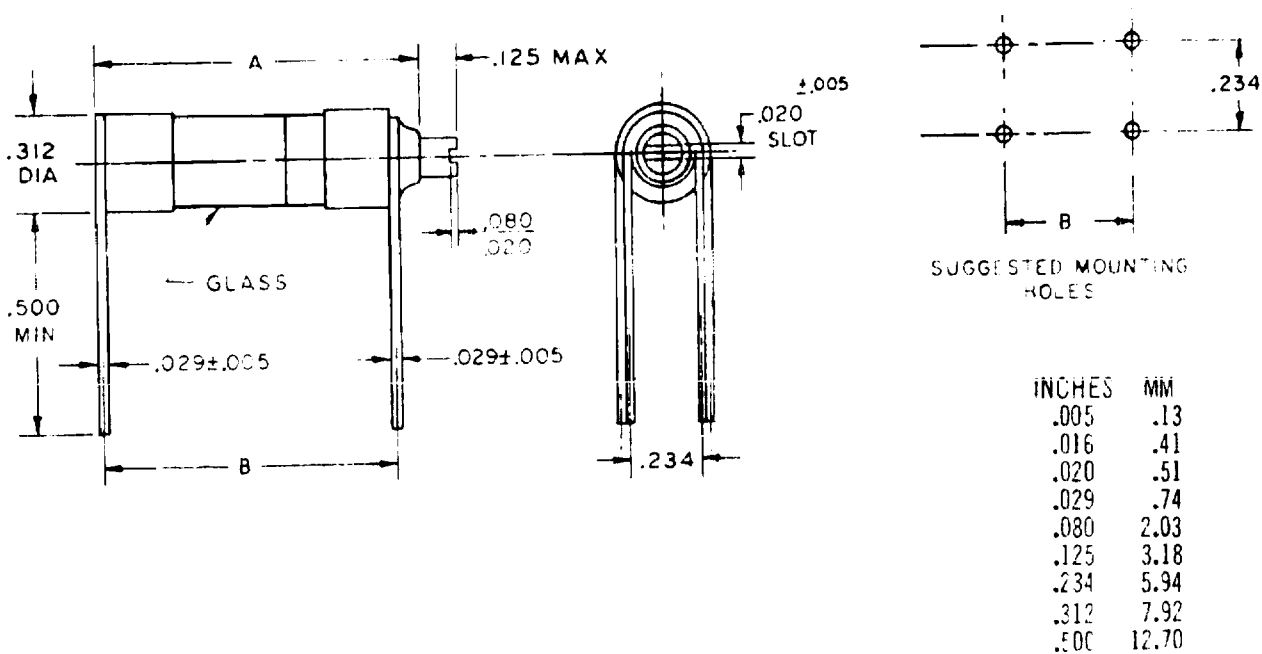


MILITARY SPECIFICATION SHEET

CAPACITORS, VARIABLE (PISTON TYPE, TUBULAR TRIMMER),  
 STYLE PC43

This specification sheet is approved for use by all  
 Departments and Agencies of the Department of Defense.

The complete requirements for procuring the capacitors described herein shall  
 consist of this document and the latest issue of Specification MIL-C-14409.



NOTES:

1. Dimensions are in inches.
2. Metric equivalents are given for general information only and are based upon 1 inch = 25.4 mm.
3. Unless otherwise specified, tolerance is +.016.
4. This style capacitor is designed for printed-circuit mounting.

FIGURE 1. Dimensions and configuration.

ⓔ denotes changes

REQUIREMENTS:

Dimensions: See figure 1 and table I.

DC voltage rating: 1,000 volts.

Construction: Sealed glass, see figure 1 and table I.

Dielectric material: Glass.

Capacitance range: See table I.

Insulation resistance (IR): Method 302 of MIL-STD-202, test condition B (500 volts  $\pm 10$  percent): Shall be not less than 1,000,000 megohms at room ambient temperature and not less than 100,000 megohms at 125°C.

Quality factor (Q): See table I.

(E) Thermal shock: Method 107 of MIL-STD-202, test condition A, except the step 3 temperature shall be 125°  $\pm 5$ °C.

Immersion: Method 104 of MIL-STD-202, test condition A.

Seal test: Applicable.

Rotational life:

Capacitance change versus rotation - No reversal greater than 2 percent.

TABLE I. Type designation and characteristics.

Type designation	Capacitance range		Dimensions <sup>1/</sup>		Q	Temperature coefficient parts/million/°C
	Min	Max	B $\pm .062$ (1.57)	A $\pm .062$ (1.57)		
	<u>pF</u>	<u>pF</u>				
PC43G160	1.0	16.0	.688 (17.48)	.734 (18.64)	750	$\pm 150$
PC43G360	1.0	36.0	.922 (23.42)	.969 (24.61)	550	$\pm 150$
PC43G520	1.0	52.0	1.141 (28.98)	1.188 (30.18)	350	$\pm 150$
PC43G750	1.0	75.0	1.375 (34.93)	1.422 (36.12)	250	$\pm 150$
PC43G121	1.0	120.0	1.984 (50.39)	2.031 (51.59)	250	$\pm 150$
PC43J121	1.0	120.0	1.984 (50.39)	2.031 (51.59)	250	$\pm 50$
(F) PC43J600	1.0	60.0	1.328 (33.73) <sub>2/</sub>	1.359 (34.52) <sub>2/</sub>	250	$\pm 50$

<sup>1/</sup> Metric equivalents are given for general information only and are based upon 1 inch = 25.4 mm. Millimeters are in parentheses.

(F) <sup>2/</sup> Dimension tolerance is  $\pm .031$  (.79).

Custodians:

- Army - ER
- Navy - EC
- Air Force - 11

Preparing activity:

Army - ER

Agent:

DLA - ES

Review activities:

- Navy - AS, OS
- DLA - ES

(Project 5910-1360)

User activities:

- Navy - CG, MC