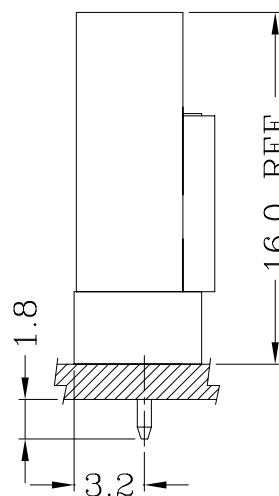
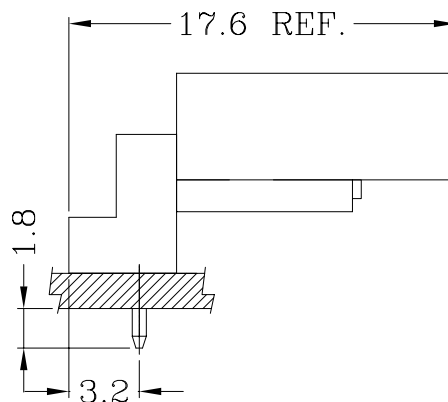


Assembly Layout

Straight Angle (V-Type)



Right Angle (R-Type)



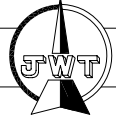
Specifications:

Poles	2~20 Poles
Pitch between poles	2.50mm
Rated Voltage	250V AC,DC
Rated Current	3A (AWG #22)
Withstand Voltage	1500V AC/minute
Contact Resistance	20mΩ (MAX.)
Insulation Resistance	1,000MΩ (MIN.)
Temperature Range	-25~+85°C
Applicable P.C.B. Thickness	1.60mm
Applicable P.C.B. Hole dia.	∅1.00±0.05
Applicable Wire Range	AWG #22~#28

UL:Recognized No. E144544

CSA:Certified No. LR78619

A2508 Series 2.50mm pitch crimp terminal socket

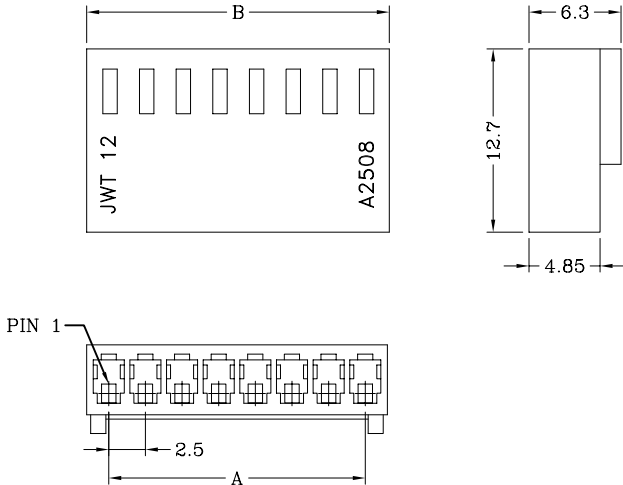


Features:

- * Available in 2 through 20 circuits
- * Material: Nylon 66 UL 94V-0 (White)
- * Suitable for JWT A2543 series terminal
- * Mates with JWT A2508 series wafer

Dimensional & Ordering Information:

Circuits	Part No	Dimensions		PCS/BAG
		A	B	
2	A2508H00-2P	2.50	5.50	1000
3	A2508H00-3P	5.00	8.00	1000
4	A2508H00-4P	7.50	10.50	1000
5	A2508H00-5P	10.00	13.00	1000
6	A2508H00-6P	12.50	15.50	1000
7	A2508H00-7P	15.00	18.00	1000
8	A2508H00-8P	17.50	20.50	1000
9	A2508H00-9P	20.00	23.00	1000
10	A2508H00-10P	22.50	25.50	1000
11	A2508H00-11P	25.00	28.00	1000
12	A2508H00-12P	27.50	30.50	1000
13	A2508H00-13P	30.00	33.00	500
14	A2508H00-14P	32.50	35.50	500
15	A2508H00-15P	35.00	38.00	500
16	A2508H00-16P	37.50	40.50	500
17	A2508H00-17P	40.00	43.00	500
18	A2508H00-18P	42.50	45.50	500
19	A2508H00-19P	45.00	48.00	500
20	A2508H00-20P	47.50	50.50	500



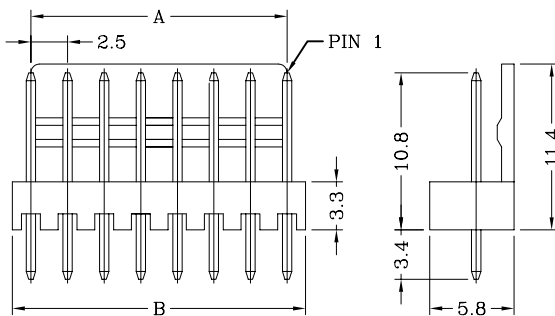
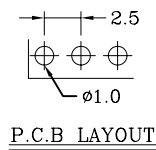
A2508 Series 2.50mm pitch wafer (V-Type)

Features:

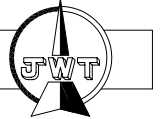
- * Available in 2 through 20 circuits
- * Material: Insulator: Nylon 66 UL 94V-0 (White)
Contact: 0.64mm(.025") square pin, brass, tin plated
- * Mates with A2508 series socket

Dimensional & Ordering Information:

Circuits	Part No	Dimensions		PCS/BAG
		A	B	
2	A2508WV0-2P	2.50	5.00	1000
3	A2508WV0-3P	5.00	7.50	1000
4	A2508WV0-4P	7.50	10.00	1000
5	A2508WV0-5P	10.00	12.50	1000
6	A2508WV0-6P	12.50	15.00	1000
7	A2508WV0-7P	15.00	17.50	500
8	A2508WV0-8P	17.50	20.00	500
9	A2508WV0-9P	20.00	22.50	500
10	A2508WV0-10P	22.50	25.00	500
11	A2508WV0-11P	25.00	27.50	500
12	A2508WV0-12P	27.50	30.00	500
13	A2508WV0-13P	30.00	32.50	500
14	A2508WV0-14P	32.50	35.00	500
15	A2508WV0-15P	35.00	37.50	500
16	A2508WV0-16P	37.50	40.00	500
17	A2508WV0-17P	40.00	42.50	250
18	A2508WV0-18P	42.50	45.00	250
19	A2508WV0-19P	45.00	47.50	250
20	A2508WV0-20P	47.50	50.00	250

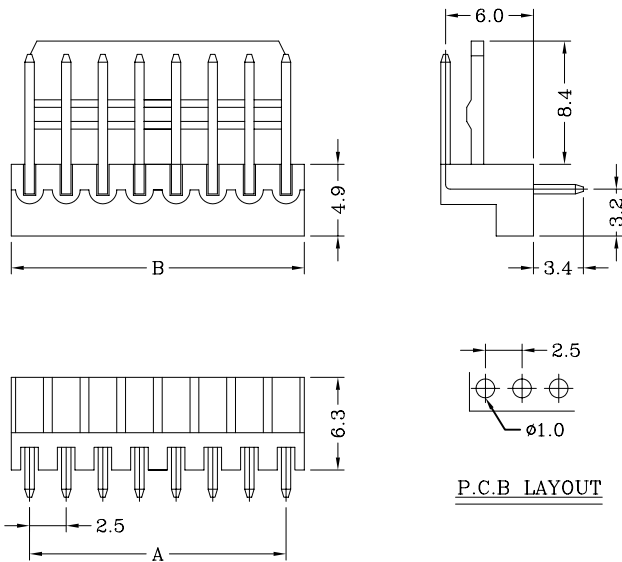


A2508 Series 2.5mm pitch wafer (R-Type)



Features:

- * Available in 2 through 20 circuits
- * Material: Nylon 66 UL 94V-0 (Dirty White)
Contact: 0.64mm(.025") square pin, brass, tin plated
- * Mates with JWT A2508 series socket



Dimensional & Ordering Information:

Circuits	Part No	Dimensions		PCS/BAG
		A	B	
2	A2508WR0-2P	2.50	5.00	1000
3	A2508WR0-3P	5.00	7.50	1000
4	A2508WR0-4P	7.50	10.00	1000
5	A2508WR0-5P	10.00	12.50	1000
6	A2508WR0-6P	12.50	15.00	1000
7	A2508WR0-7P	15.00	17.50	500
8	A2508WR0-8P	17.50	20.00	500
9	A2508WR0-9P	20.00	22.50	500
10	A2508WR0-10P	22.50	25.00	500
11	A2508WR0-11P	25.00	27.50	500
12	A2508WR0-12P	27.50	30.00	500
13	A2508WR0-13P	30.00	32.50	500
14	A2508WR0-14P	32.50	35.00	500
15	A2508WR0-15P	35.00	37.50	500
16	A2508WR0-16P	37.50	40.00	500
17	A2508WR0-17P	40.00	42.50	250
18	A2508WR0-18P	42.50	45.00	250
19	A2508WR0-19P	45.00	47.50	250
20	A2508WR0-20P	47.50	50.00	250