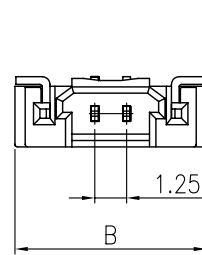
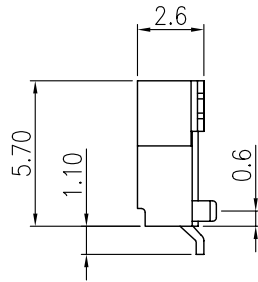
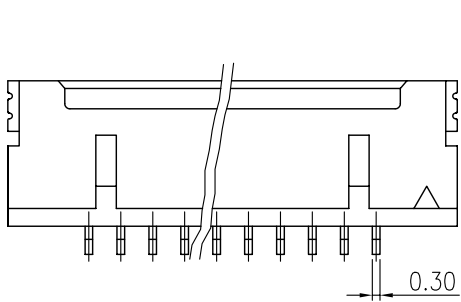
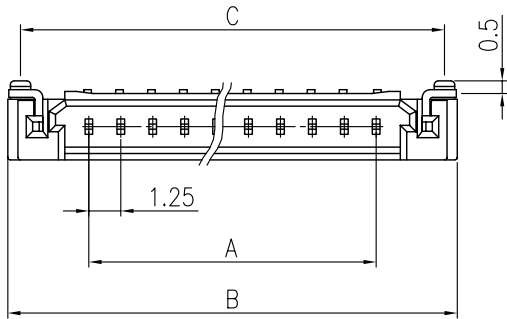


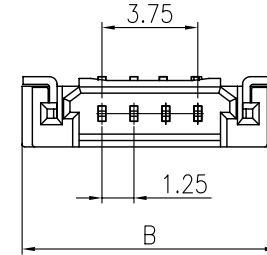
V1.1

REVISIONS							
SYM	DISCRPTION	DATE	APPROVED	SYM	DISCRPTION	DATE	APPROVED
△				△			
△				△			

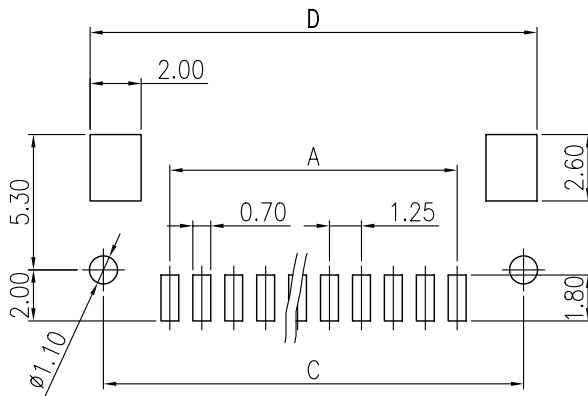
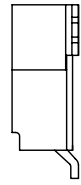
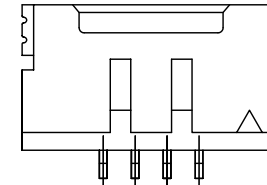
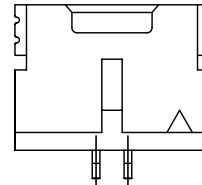
**\*\*CUSTOMER DRAWING FOR REFERENCE ONLY, SAMPLES APPROVAL ARE REQUIRED!!**



MMT#MCu003-Rt02T



MMT#MCu003-Rt04T



PCB LAYOUT

**SPECIFICATIONS**

VOLTAGE RATING : AC 250V DC  
 CURRENT RATING : AC, DC, 1A  
 WITHSTANDING VOLTAGE: AC 500V/MIN.  
 INSULATION RESISTANCE: 1000MΩ MIN.  
 TEMPERATURE RANGE: -25°C ~ +85°C  
 CONTACT RESISTANCE: INITIAL VALUE/10MΩ MAX.  
 AFTER ENVIRONMENTAL TESTING/30MΩ MAX.  
 MATERIAL: NYLON 66 UL 94V-0  
 CONTACT: BRASS, TIN PLATED  
 BASE: Q'ty: 1,000 PCS/ROLL

**ORDER INFORMATION:**

MCu003-RtXXT-P  
 MC: WAFER SERIES, WAFER  
 u: PITCH: 1.25 mm  
 003: SERIES NO.  
 Rt: PCB TYPE, RIGHT  
 ANGLE SURFACE MOUNT TYPE  
 XX: NO. OF CONTACTS  
 T: PLATING, TIN PLATING  
 -P: PLASTIC PEG

PART NO.	CIRCUITS	DIMENSION			
		A	B	C	D
MCu003-Rt02T	1X2	1.25	7.50	--	6.05
MCu003-Rt04T	1X4	3.75	10.00	--	10.55
MCu003-Rt12T-P	1X12	13.75	20.00	18.95	20.00
MCu003-Rt20T-P	1X20	23.75	30.00	28.95	30.00
MCu003-Rt25T-P	1X25	30.00	36.25	35.20	36.25
MCu003-Rt30T-P	1X30	36.25	42.50	41.45	43.05

MATING	HOUSING	MCu003-XX-H	TERMINAL	MCu003-T
TOLERANCES UNLESS OTHERWISE SPECIFIED ±0.25	SIGNATURES		DATE	MODEL
	DRAWN	TONY	26/AUG/03	TITLE
SYMBOL △	UNIT mm	SCALE 5/1	CHECKED	ZOLA
			DATE	26/AUG/03
APPROVALS			NO.	MCu003-Rt__T-P
<b>MMT CORPORATION</b>				