

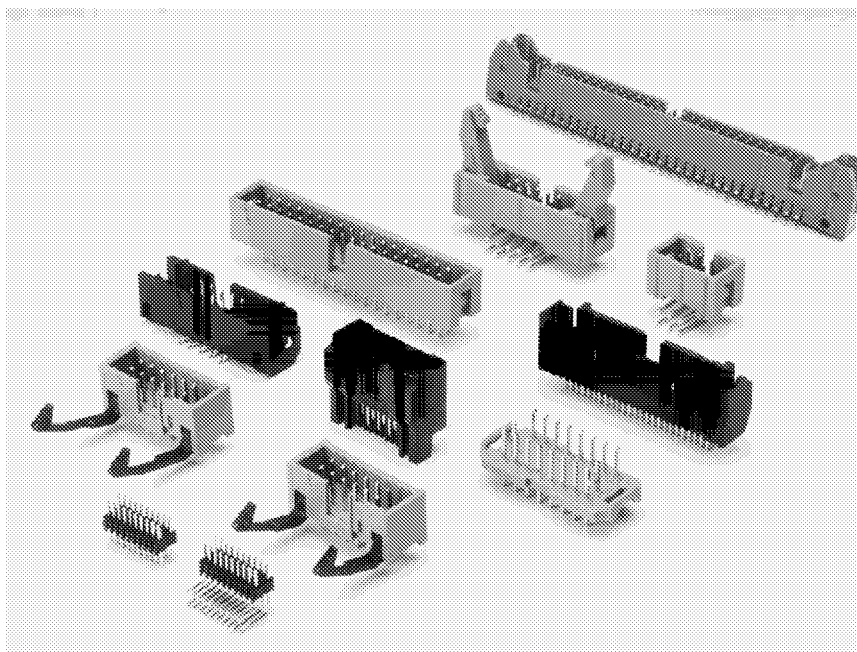
PRODUCT DESCRIPTION

PCB Male Headers provide reliability, convenience and positive polarization when mated with Female Socket Transition Connectors in PC board applications which require repeated connection and disconnection. Optional retainer-ejector latches easily disengage the header and female socket, eliminating stress in the cable termination and solder joint areas during disconnect.

DESIGN ADVANTAGES

- Industry standard polarization mates with center bump as well as dual slot polarized female socket connectors.
- Available in .050 x .100, .100 x .100, .100 x .200 and .100 x .300 center spacing.
- Available in standard, low profile, vertical eject, compliant pin and surface mount configurations.
- Available in high temperature materials.

HEADERS



HEADER INDEX

.050" x .100" 2-Row Straight Tail	14
.050" x .100" 2-Row Right Angle Tails	16
.050" x .100" 4-Row Right Angle Tails	18
.050" x .100" 2-Row Unshrouded Header, Straight	20
.050" x .100" 2-Row Unshrouded Header, Right Angle	21
.100" x .100" Straight Standard Header	22
.100" x .100" Right Angle Standard Header	23
.100" x .100" High Temp. Straight Standard Header	24
.100" x .100" High Temp. Right Angle Standard Header	25
.100" x .100" Low Profile Straight w/ejectors	26
.100" x .100" Low Profile Right Angle w/ejectors	27
.100" x .100" Low Profile Straight	28
.100" x .100" Low Profile Right Angle	29
.100" x .100" Low Profile Straight, High Temp.	30
.100" x .100" Low Profile Right Angle, High Temp.	31
.100" x .100" Low Profile Straight w/latches	32
.100" x .100" Low Profile Right Angle w/latches	33
.100" x .100" Flex-Fit™ with Retainer/Ejector	34
.100" x .100" Flex-Fit™ Low Profile	35
.100" x .100" Surface Mount	36
Pin Strip Headers, Single Row Straight	37
Pin Strip Headers, Single Row Right Angle	38
Pin Strip Headers, Dual Row Straight	39
Pin Strip Headers, Dual Row Right Angle	40
Dip Socket Headers, 14 and 16 Positions	41
Accessories.....	42



LOW PROFILE HEADERS WITH VERTICAL RETAINER/EJECTOR LATCHES, STRAIGHT PINS

.100" x .100" CENTERS



LR92984 E60980

PHYSICAL PROPERTIES

INSULATION MATERIAL: Glass filled thermoplastic

rated UL 94V-0

COLOR: Blue

CONTACT MATERIAL: Phosphor bronze with 30μ inches min. gold over 50μ inches min. nickel plating

ELECTRICAL PROPERTIES

CURRENT RATING: 1 Amp

INSULATION RESISTANCE: >1 x 10⁹ Ohms @ 500 VDC

DIELECTRIC STRENGTH: >1000 VRMS @ sea level

ENVIRONMENTAL PROPERTIES

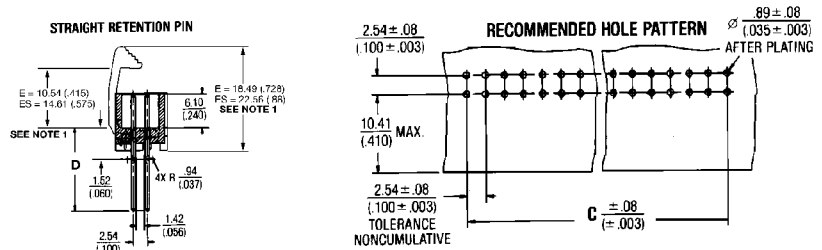
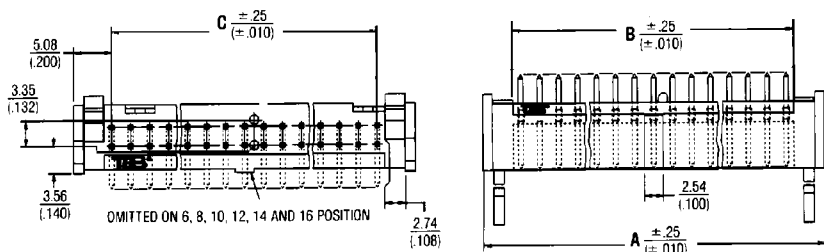
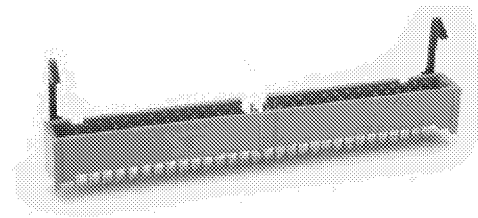
TEMPERATURE RATING: -55°C TO 125°C

MATING CONNECTOR

FEMALE SOCKETS: See pages 8-10

ACCESSORIES

POLARIZING KEY: See page 42



Ordering Information

CATALOG NUMBERS		NO. OF POS.	DIMENSIONS IN MM (INCHES)		
DIMENSION "D" IN MM (INCHES)			A	B	C
2.59 (.102)	4.19 (.165)				
FOR 1.57 (.062)	FOR 3.18 (.125)				
P.C. BOARDS	P.C. BOARDS				
501-0627XX	501-0637XX	6	15.24 (.600)	7.11 (.280)	5.08 (.200)
501-1027XX	501-1037XX	10	20.32 (.800)	12.19 (.480)	10.16 (.400)
501-1227XX	501-1237XX	12	22.86 (.900)	14.73 (.580)	12.70 (.500)
501-1427XX	501-1437XX	14	25.40 (1.000)	17.27 (.680)	15.24 (.600)
501-1627XX	501-1637XX	16	27.94 (1.100)	19.81 (.780)	17.78 (.700)
501-2027XX	501-2037XX	20	33.02 (1.300)	24.89 (.980)	22.86 (.900)
501-2427XX	501-2437XX	24	38.10 (1.500)	29.97 (1.180)	27.94 (1.100)
501-2627XX	501-2637XX	26	40.64 (1.600)	32.51 (1.280)	30.48 (1.200)
501-3027XX	501-3037XX	30	45.72 (1.800)	37.59 (1.480)	35.56 (1.400)
501-3427XX	501-3437XX	34	50.80 (2.000)	42.67 (1.680)	40.64 (1.600)
501-3627XX	501-3637XX	36	53.34 (2.100)	45.21 (1.780)	43.18 (1.700)
501-4027XX	501-4037XX	40	58.42 (2.300)	50.29 (1.980)	48.26 (1.900)
501-4427XX	501-4437XX	44	63.50 (2.500)	55.37 (2.180)	53.34 (2.100)
501-5037XX	501-5037XX	50	71.12 (2.800)	62.99 (2.480)	60.96 (2.400)
501-6027XX	501-6037XX	60	83.82 (3.300)	75.69 (2.980)	73.66 (2.900)
501-6427XX	501-6437XX	64	88.90 (3.500)	80.77 (3.180)	78.74 (3.100)

1. For long ejectors, add suffix ES (-XXXXES). For short ejectors, add suffix E (-XXXXE)

2. Add "R" to part number for PCB retention feature.

LOW PROFILE HEADERS WITH VERTICAL RETAINER/EJECTOR LATCHES, RIGHT ANGLE PINS

.100" x .100" CENTERS



LR92984 E60980

PHYSICAL PROPERTIES

INSULATION MATERIAL: Glass filled thermoplastic rated UL 94V-0

COLOR: Blue

CONTACT MATERIAL: Phosphor bronze with 30µ inches min. gold over 50µ inches min. nickel plating

ELECTRICAL PROPERTIES

CURRENT RATING: 1 Amp

INSULATION RESISTANCE: >1 x 10⁹ Ohms @ 500 VDC

DIELECTRIC STRENGTH: >1000 VRMS @ sea level

ENVIRONMENTAL PROPERTIES

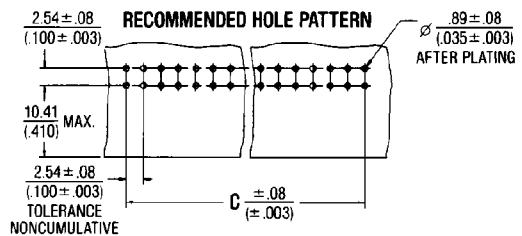
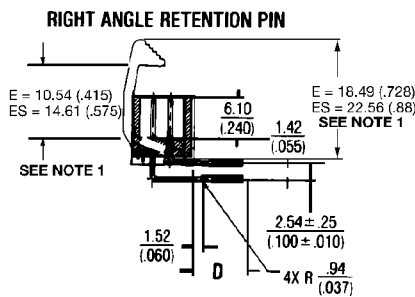
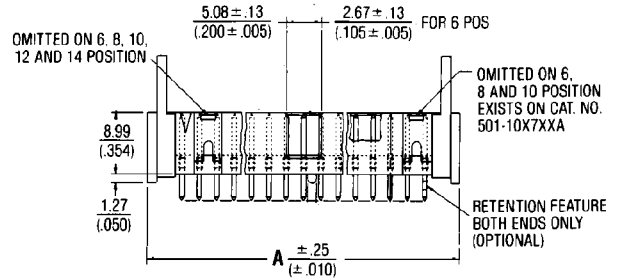
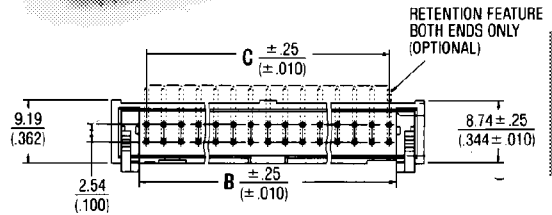
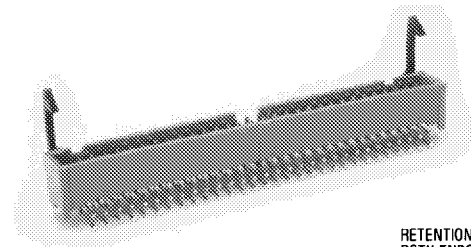
TEMPERATURE RATING: -55°C TO 125°C

MATING CONNECTORS

FEMALE SOCKETS: See pages 8-10

ACCESSORIES

POLARIZING KEY: See page 42



Ordering Information

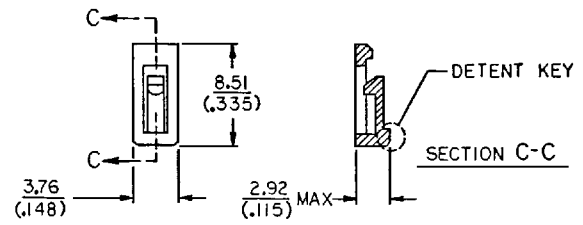
CATALOG NUMBERS		NO. OF POS.	DIMENSIONS IN MM (INCHES)		
DIMENSION "D" IN MM (INCHES)			A	B	C
2.59 (.102)	4.19 (.165)				
FOR 1.57 (.062)	FOR 3.18 (.125)				
P.C. BOARDS	P.C. BOARDS				
501-0607XX	501-0617XX	6	15.24 (.600)	7.11 (.280)	5.08 (.200)
501-1007XX	501-1017XX	10	20.32 (.800)	12.19 (.480)	10.16 (.400)
501-1207XX	501-1217XX	12	22.86 (.900)	14.73 (.580)	12.70 (.500)
501-1407XX	501-1417XX	14	25.40 (1.000)	17.27 (.680)	15.24 (.600)
501-1607XX	501-1617XX	16	27.94 (1.100)	19.81 (.780)	17.78 (.700)
501-2007XX	501-2017XX	20	33.02 (1.300)	24.89 (.980)	22.86 (.900)
501-2407XX	501-2417XX	24	38.10 (1.500)	29.97 (1.180)	27.94 (1.100)
501-2607XX	501-2617XX	26	40.64 (1.600)	32.51 (1.280)	30.48 (1.200)
501-3007XX	501-3017XX	30	45.72 (1.800)	37.59 (1.480)	35.56 (1.400)
501-3407XX	501-3417XX	34	50.80 (2.000)	42.67 (1.680)	40.64 (1.600)
501-3607XX	501-3617XX	36	53.34 (2.100)	45.21 (1.780)	43.18 (1.700)
501-4007XX	501-4017XX	40	58.42 (2.300)	50.29 (1.980)	48.26 (1.900)
501-4407XX	501-4417XX	44	63.50 (2.500)	55.37 (2.180)	53.34 (2.100)
501-5017XX	501-5017XX	50	71.12 (2.800)	62.99 (2.480)	60.96 (2.400)
501-6007XX	501-6017XX	60	83.82 (3.300)	75.69 (2.980)	73.66 (2.900)
501-6407XX	501-6417XX	64	88.90 (3.500)	80.77 (3.180)	78.74 (3.100)

- For long ejectors, add suffix ES (-XXXES). For short ejectors, add suffix E (-XXXE)
- Add "R" to part number for PCB retention feature.

ACCESSORIES

POLARIZING KEY ORDERING INFORMATION

CATALOG NUMBER	COLOR/DESCRIPTION
622-0056P	Blue
636-0056P	Black



Polarizing Key