

SPECIFICATIONS

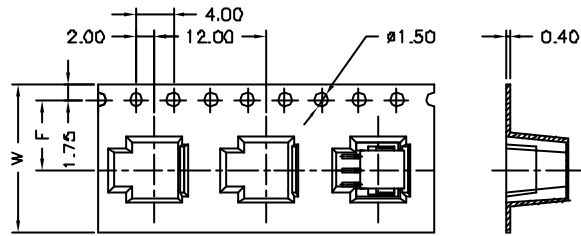
Current Rating: 3A AC,DC
 Voltage Rating: 350V AC,DC
 Temperature Range: -25°C ~ +85°C
 Contact Resistance: 20mΩ Max.
 Insulation Resistance: 1000MΩ Min.
 Withstanding Voltage: 500V AC/minute
 Pin Material: Brass/Tin-plated
 Material: Nylon 6T,UL94V-0
 Color: Natural(Beige)

Ordering Information & Dimensions

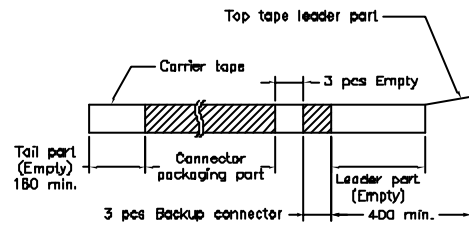
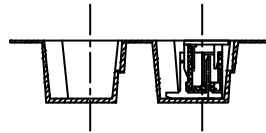
| PART NO. | Dimensions | |
|---------------|------------|-------|
| | A | B |
| A1501WV-S-02P | 1.50 | 4.30 |
| A1501WV-S-03P | 3.00 | 5.80 |
| A1501WV-S-04P | 4.50 | 7.30 |
| A1501WV-S-05P | 6.00 | 8.80 |
| A1501WV-S-06P | 7.50 | 10.30 |
| A1501WV-S-07P | 9.00 | 11.80 |
| A1501WV-S-08P | 10.50 | 13.30 |
| A1501WV-S-09P | 12.00 | 14.80 |
| A1501WV-S-10P | 13.50 | 16.30 |
| A1501WV-S-11P | 15.00 | 17.80 |
| A1501WV-S-12P | 16.50 | 19.30 |
| A1501WV-S-13P | 18.00 | 20.80 |
| A1501WV-S-14P | 19.50 | 22.30 |
| A1501WV-S-15P | 21.00 | 23.80 |

| | | | | | | |
|-----------------------|--|-------------|------|--|--------|--------------|
| | | | UNIT | SCALE | SHEET | TITLE: |
| | | | mm | | 1 of 2 | |
| DRAWN BY | | APPROVED BY | | 1.50mm PITCH 180 °WAFER-SMT TYPE | | DRAW NO.: |
| 董正一 | | 董正一 | | | | |
| 2003.04.19 | | 2003.04.19 | | GENERAL TOLERANCE B1 REVISE 2006.09.10 X.X ±0.25 ANGLE ± B0 NEW RELEASE 2006.04.13 X.XX ±0.15 REV. DESCRIPTION DATE X.XXX ±0.05 | | A1501WV-S-XP |
| REV. DESCRIPTION DATE | | DATE | | | | |

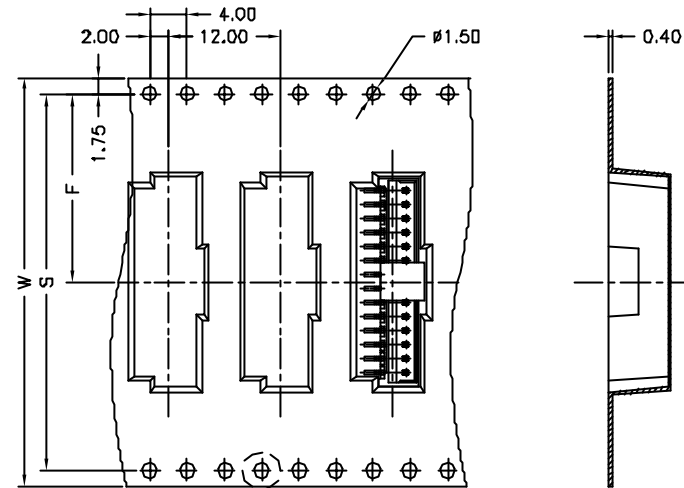
02~09 Contacts



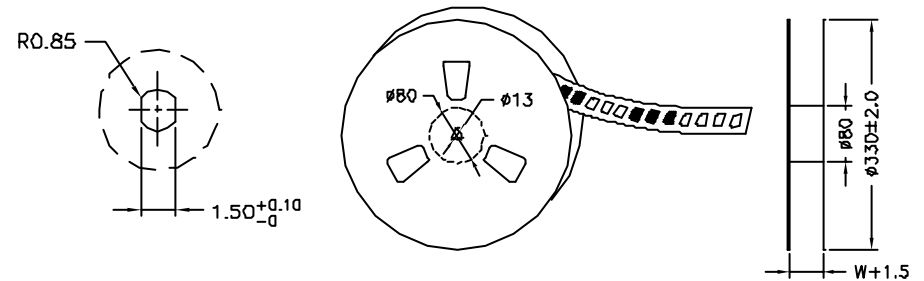
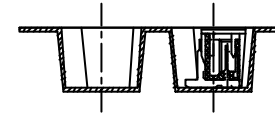
Unreeling direction →



10~15 Contacts



Unreeling direction →



| Number of Contacts | W±0.3 | F±0.1 | S±0.1 | Q'ty/Reel |
|--------------------|-------|-------|-------|-----------|
| 02P | 16 | 7.50 | / | 500 |
| 03P | 16 | 7.50 | | 500 |
| 04P | 16 | 7.50 | | 500 |
| 05P | 24 | 11.50 | | 500 |
| 06P | 24 | 11.50 | | 500 |
| 07P | 24 | 11.50 | | 500 |
| 08P | 24 | 11.50 | | 500 |
| 09P | 24 | 11.50 | | 500 |
| 10P | 32 | 14.20 | | 28.40 |
| 11P | 32 | 14.20 | 28.40 | 500 |
| 12P | 32 | 14.20 | 28.40 | 500 |
| 13P | 32 | 14.20 | 28.40 | 500 |
| 14P | 44 | 20.20 | 40.40 | 500 |
| 15P | 44 | 20.20 | 40.40 | 500 |

| | | | | |
|-------------------------------|-------------|----------------------------------|--|-----------|
| | | | | |
| UNIT | SCALE | SHEET | TITLE: | |
| mm | | 2 of 2 | 1.50mm PITCH 180 WAFER-SMT TYPE TAPING SPEC. | |
| DRAWN BY 蕭惠鳳 2004.02.12 | | APPROVED BY 謝瑞清 2004.02.12 | | |
| GENERAL TOLERANCE | | | | |
| B1 | REVISE | 2006.09.10 | | X.X ±0.25 |
| B0 | NEW RELEASE | 2006.04.13 | X.XX ±0.15 | |
| REV. | DESCRIPTION | DATE | X.XXX ±0.05 | |
| | | | ANGLE ± | |
| | | | DRAW NO. : A1501WV-S-XP | |
| | | | REV. B1 | |