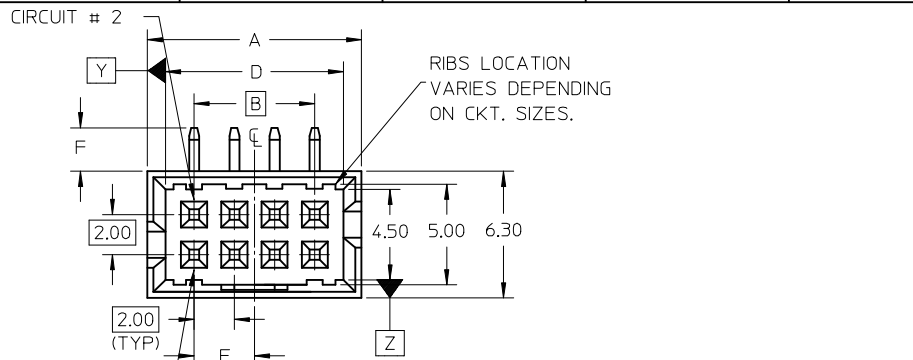
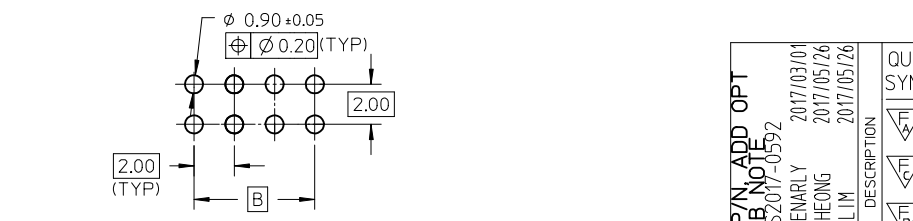
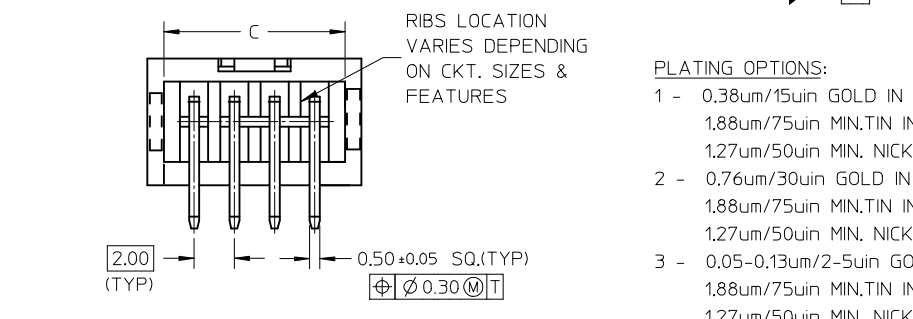
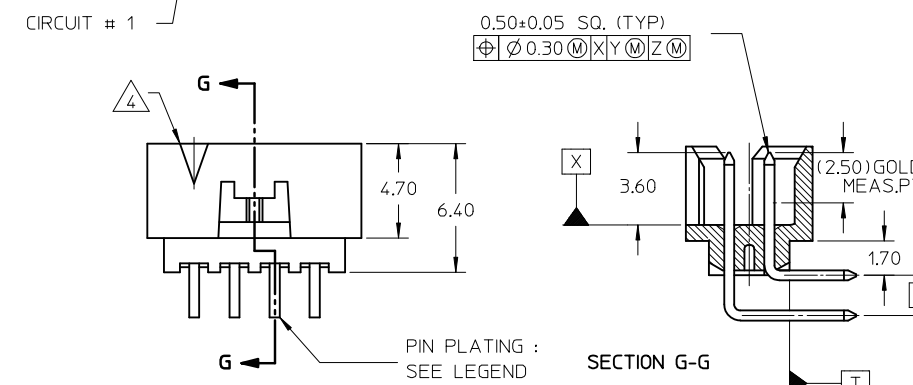


10 9 8 7 6 5 4 3 2 1



ASSEMBLY P/N (W/O KAPTON)	ASSEMBLY P/N (WITH KAPTON)	ASSEMBLY P/N (WITH T&R (WITH KAPTON)	CKT SIZE	VOID PIN LOCATION	DIMENSION						PLATING OPTION
					A	B	C	D	E	F	
87833-5230	-	-	12	1	14.65	10.00	13.00	12.85	5.00	2.16	1
87833-5220	-	-	10	10	12.65	8.00	11.00	10.85	4.00	2.16	1
87833-7620	-	-		3							
-	87833-0871	87833-0881	8	7	10.65	6.00	9.00	8.85	3.00	2.16	1



- PLATING OPTIONS:**
- 0.38um/15uin GOLD IN CONTACT AREA AND 1.88um/75uin MIN.TIN IN SOLDER TAIL AREA OVER 1.27um/50uin MIN. NICKEL OVERALL.
 - 0.76um/30uin GOLD IN CONTACT AREA AND 1.88um/75uin MIN.TIN IN SOLDER TAIL AREA OVER 1.27um/50uin MIN. NICKEL OVERALL.
 - 0.05-0.13um/2-5uin GOLD IN CONTACT AREA AND 1.88um/75uin MIN.TIN IN SOLDER TAIL AREA OVER 1.27um/50uin MIN. NICKEL OVERALL.

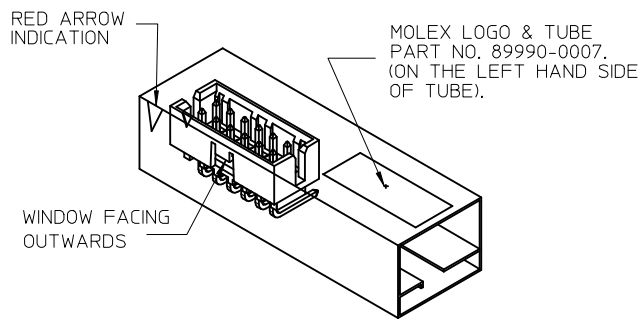
- NOTES:**
- FOR ILLUSTRATION PURPOSES, 8 CIRCUIT SIZE WAFER IS SHOWN.
 - MATERIAL : HOUSING : NYLON 46, GLASS FILLED, UL94V-0, COLOR BLACK. PIN : 0,50MM SQ.PHOSPHOR BRONZE. KAPTON TAPE : POLYIMIDE 4mm X 30m X 0,055mm COLOR: AMBER.
 - PRODUCT SPECIFICATION PS-87831-027 APPLIES.
 - CKT 4 & 6 HAS NO IDENTIFICATION TAG.
 - THIS HEADER MATES WITH MOLEX:
 - a) CRIMP RECEPTACLE HOUSING, 51110 SERIES WITH CRIMP TERMINAL, 50394 SERIES.
 - b) 2MM MILLIGRID DUAL ROW IDT, 87568 SERIES.
 - PARTS TO BE PACKED WITH MOISTURE BARRIER BAG.
 - NO CENTRE POLARIZATION SLOT FOR CKT SIZE 4 AND 6

REV D P/N, ADD OPT ADD RIB NOTE EC No: S2017-0592 DRWING:EMEARLY 2017/03/01 CHKD:S-CHEONG 2017/05/06 APPR:KHLIM 2017/05/26	QUALITY SYMBOLS	GENERAL TOLERANCES (UNLESS SPECIFIED)		DIMENSION STYLE		SCALE	DESIGN UNITS	THIRD ANGLE PROJECTION		
		mm	INCH	MM ONLY		NTS	METRIC			
		4 PLACES ± --- ± ---	3 PLACES ± --- ± ---	2 PLACES ± 0.2 ± ---	1 PLACE ± --- ± ---	0 PLACE ± ±	DRAWN BY ATSEE DATE 2003/10/23		TITLE MGRID, SHROUDED HEADER W/LOCKING FEATURE, R/A	
		ANGULAR ± 3°		SEE TABLE		MATERIAL NO. DOCUMENT NO.		SHEET NO.		
A17	DRAFT WHERE APPLICABLE MUST REMAIN WITHIN DIMENSIONS		THIS DRAWING CONTAINS INFORMATION THAT IS PROPRIETARY TO MOLEX INCORPORATED AND SHOULD NOT BE USED WITHOUT WRITTEN PERMISSION		SD-87833-011		1 OF 2			

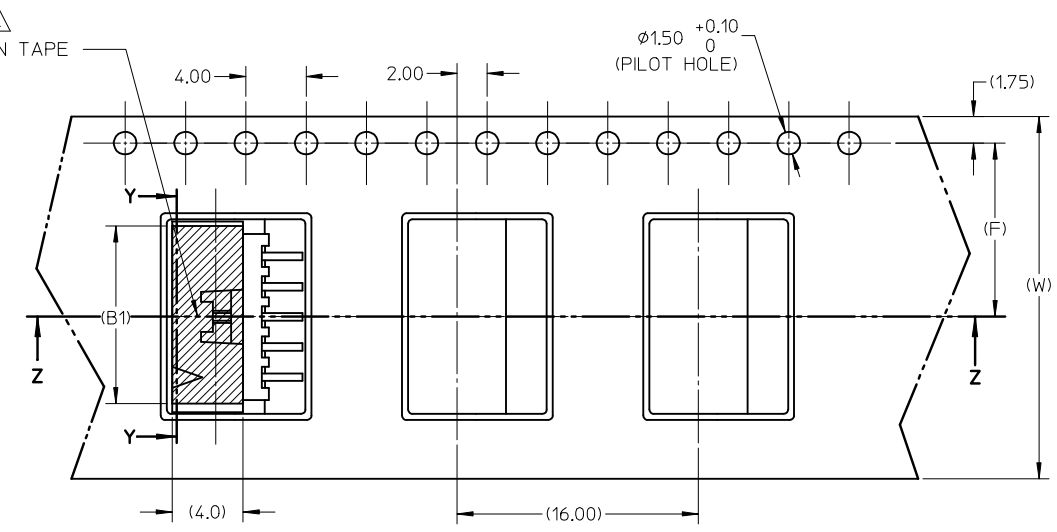
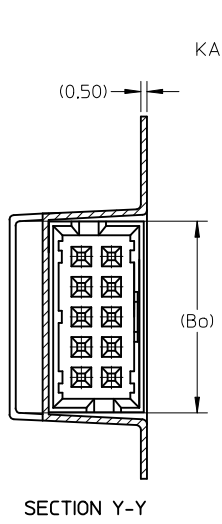
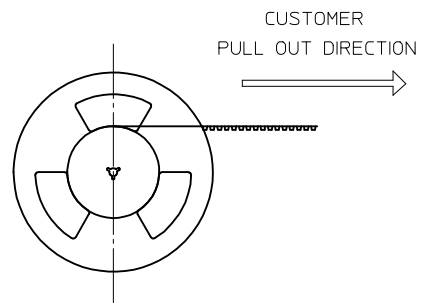
9 8 7 6 5 4 3 2 1

10 9 8 7 6 5 4 3 2 1

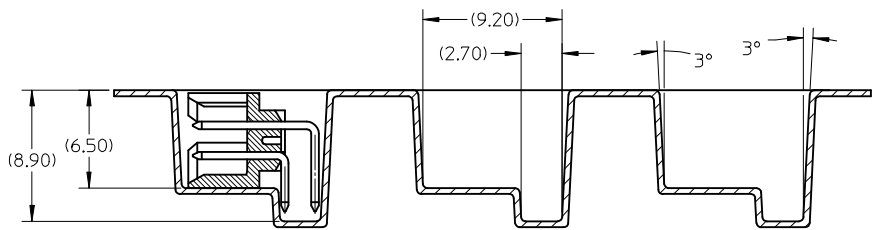
ASSEMBLY P/N PACKED IN T&R (WITH KAPTON)	CKT SIZE	(F)	(Bo)	(B1)	(W)
87833-0881	08	11.50	11.00	10.00	24.00



REF: ORIENTATION OF PART IN TUBE.
(FOR THE REFERENCE OF PART/TUBE ASSEMBLY.)



- NOTES:
- LEADER AND TRAILER TAPE
 - PEELING OFF FORCE OF THE TOP TAPE: 20-80gf.
(PEELING DIRECTION AS SHOWN IN FOLLOWING FIGURE)
 - PACKAGING STANDARD IS AS PER EIA-481.
- △ KAPTON TAPE SHOULD BE LOCATED AS CENTRAL OF PART AS POSSIBLE AND MUST COVER THE WINDOWS.
5. TAPE & REEL QUANTITY : 500 PCS/REEL



REVD P/N, ADD OPT EC NO: S2017-0592 DRWNG: MARNARLY 2017/03/01 CHK'D: SCHEONG 2017/05/26 APPR: KHLIM 2017/05/26	QUALITY SYMBOLS	GENERAL TOLERANCES (UNLESS SPECIFIED)		DIMENSION STYLE		SCALE	DESIGN UNITS	THIRD ANGLE PROJECTION	
	$F_{\square} = \emptyset$	mm	INCH	MM ONLY		NTS	METRIC		
	$F_{\square} = \emptyset$	4 PLACES ± --- ± ---	3 PLACES ± --- ± ---	DRAWN BY	DATE	TITLE			
	$F_{\square} = \emptyset$	2 PLACES ± 0.2 ± ---	1 PLACE ± --- ± ---	ATSEE	2003/10/23	MGRID, SHROUDED HEADER W/LOCKING FEATURE, R/A			
REV	DESCRIPTION	DRAFT WHERE APPLICABLE MUST REMAIN WITHIN DIMENSIONS		APPROVED BY	DATE	DOCUMENT NO.		SHEET NO.	
A17				SKTOH	2003/11/07	SD-87833-011		2 OF 2	
				SIZE	THIS DRAWING CONTAINS INFORMATION THAT IS PROPRIETARY TO MOLEX INCORPORATED AND SHOULD NOT BE USED WITHOUT WRITTEN PERMISSION				
				A3					

9 8 7 6 5 4 3 2 1