



TECHNICALS FEATURES

MATERIAL

INSULATOR : Special PPS (Polyphenylene Sulfide Fiberglass filled thermoplastic) UL 94-V0

- Radiation resistance
- No humidity absorption
- Oxygen free

Note : PPS characteristics are recognized for space applications

CRIMPING SIGNAL CONTACTS :

- Female :**
- **Body** : Copper alloy / Ni + Au 0.2µ
 - **Socket body** : Beryllium copper / Ni + Au 1.25µ

ELECTRICAL for LF Contacts

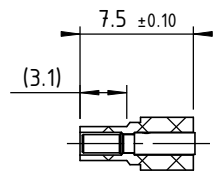
- **All contacts** : 3 A max. @ 25°C
2.2 A max. @ 85°C
- **Working voltage (sea level)** : Tested at 800 V DC
- **Proof voltage** : Tested at 1200 V DC
- **Contact resistance (initially)** : max. 10 mΩ
- **Insulation resistance** : 1000 MΩ min

MECHANICAL for LF Contacts

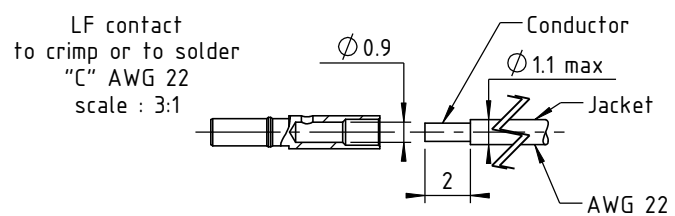
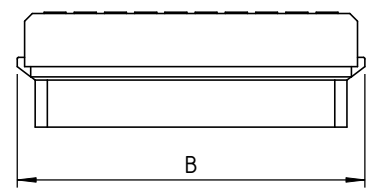
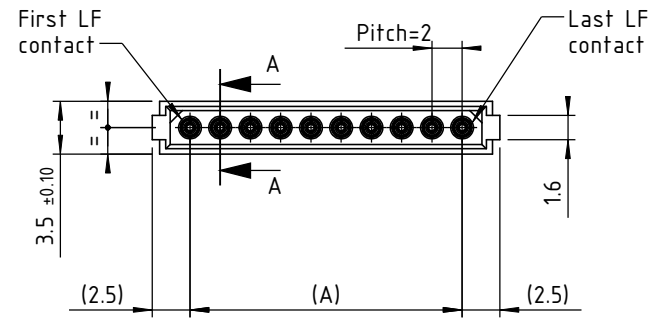
- **Mechanical operations** : 500 cycles min. up to 2500
- **Contact insertion and withdrawal force** : 2 N max. / 0.2 N min.
- **Contact retention in insulator** : 10 N min.
- **Contact replacement in insulator** : 3 cycles

ENVIRONMENTAL

- **Temperature range** : From -60°C to +260°C
- **Vibration severity** : 0.75mm, 10 g RMS 6 hours long random with superimposed sinusoid. No intermittencies measured when using an H.S.L.I. (High Speed Logic Interrupt) detector with a trip threshold of 2 ns.
- **Shock severity** : 100g for 6 ms
- **Solvent resistance** : HcFc 141 bMGX (ATOCHEM) solvent
- **Salt spray test** : 96 hrs
- **Humidity test** : 56 days @ 90% Humidity



CUT A-A



Crimping following cable instruction ICLF01
Marking as referenced in the CMM catalogue pages 12 & 13

CONNECTOR SERIE 100 FEMALE

Contacts number	Length in mm	
	A	B
2	2	7
3	4	9
4	6	11
5	8	13
6	10	15
7	12	17
8	14	19
9	16	21
10	18	23
11	20	25
12	22	27
13	24	29
14	26	31
15	28	33
16	30	35
17	32	37
18	34	39
19	36	41
20	38	43
21	40	45
22	42	47
23	44	49
24	46	51
25	48	53

Tools recommended	
LF contacts insertion & withdrawal tool	P/N C12935
Recommended hand crimp tool	P/N MH800
Recommended positionner K 1692	P/N C12929
AWG22 crimp tool setting	Position 6

 www.nicomatic.com Mail : nicomatic@nicomatic.fr Tel : +33 (0)4.50.36.13.85	2	25/11/08	H.L.	E.M.	D.Z.
	Iss	Date	Drawn	Checked	Approved
Item : Connector CMM100 female to crimp AWG22, nn pts					
Folder : X:\Méthodes\Plans clients\Plans clients 2D\07 - CMM100\Connecteurs Femelles\102C\102Cnn_cl					

This document and drawings, sketches, and schematic drawings are the property of the NICOMATIC company, and no parts thereof may be reproduced and used without the written consent of the owner. Law dated 11.03.1902

Catalogue Reference : 102Cnn

General tolerance ±0.2	Scale 2:1	Page 1/1
------------------------	-----------	----------