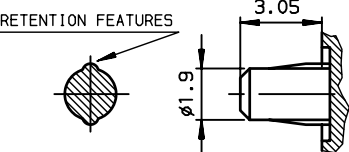
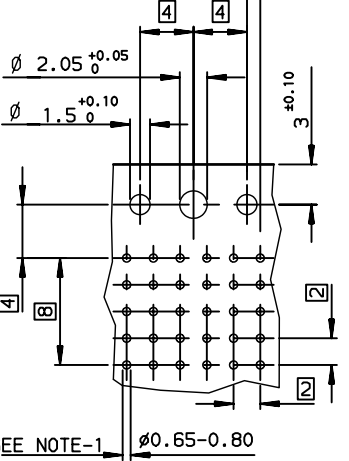


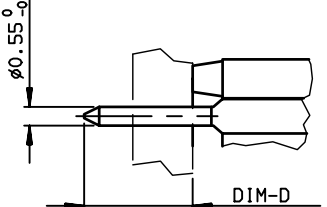
DETAIL OF FORCE-FIT PEGS



LAYOUT FOR P.C.B (PER 12mm LENGTH)



DETAIL-1: SOLDER PIN



TIN LEAD PART NUMBER

Part Number: HM1L53xyP000Hz					
MATING LENGTH DIM-P / REPLACE 'x' BY:			PERFORM LEVEL REPLACE 'z' BY:		
ROW-A	ROW-B	ROW-C	ROW-D	ROW-E	000H6 = PL1 OF IEC SPEC
A = 5.00	5.00	5.00	5.00	5.00	000H4 = PL3 OF IEC SPEC
L = 5.75	5.75	5.75	5.75	5.75	040H0 = BELLCORE 4 GAZES SPEC
D = 6.50	6.50	6.50	6.50	6.50	TERMINATION LENGTH
B = 6.50	5.00	5.00	5.00	5.00	D=2.90 ± 0.3, replace y by A
C = 6.50	5.75	5.75	6.50	5.75	DIM-D
					D=3.70 ± 0.3, replace y by B

LEAD FREE PART NUMBER

Part Number: HM1L53xyP000HzLF					
MATING LENGTH DIM-P / REPLACE 'x' BY:			PERFORM LEVEL REPLACE 'z' BY:		
ROW-A	ROW-B	ROW-C	ROW-D	ROW-E	000H6 = PL1 OF IEC SPEC
A = 5.00	5.00	5.00	5.00	5.00	000H4 = PL3 OF IEC SPEC
L = 5.75	5.75	5.75	5.75	5.75	040H0 = BELLCORE 4 GAZES SPEC
D = 6.50	6.50	6.50	6.50	6.50	TERMINATION LENGTH
B = 6.50	5.00	5.00	5.00	5.00	D=2.90 ± 0.3, replace y by A
C = 6.50	5.75	5.75	6.50	5.75	DIM-D
					D=3.70 ± 0.3, replace y by B

GENERAL CHARACTERISTICS AND ROHS INFORMATIONS:

SEE DRAWING C-8626-0005

NOTE-2: INSERTION IN PCB, HANDLING OR BENCH PRESS  
 NOTE-3:  
 NOTE-4: REAR CENTRAL SUPPORT FOR BETTER ASSY ON PCB

(REDUCED SCALE SHEET)

European Views

www.fciconnect.com		surface ISO 1302	tolerance std ISO 406 ISO 1101	projection mm	mm
		TOLERANCES UNLESS OTHERWISE SPECIFIED		size A3	Scale 2.5
Dr	CHAMPION	1997/06/17	ANGULAR	0.X ± 0.1	ECN
Eng	LENOIR	1997/06/17	LINEAR	0.XX ± 0.1	LS06-0095
Chr	LEGARE	1997/06/17	0.XX' ± 2'	0.XXX ± 0.1	Spec ref -
Appr	LEGARE	1997/06/17	Product family	METRAL	
FCJ		METRAL RA HEADER 5 ROW		dwg no	C-8626-0241
		STANDARD SOLDER 120 WAY		Rev.	D
catalog no				CUSTOMER	sheet 1 of 1

rev	ecn no	dr	date
B	-	MAS	2000/08/31
C	LS05-001	MLE	2005/03/15
D	LS06-0095	LGO	2006/07/10
-	-	-	-
-	-	-	-
-	-	-	-



Copyright FCJ.