

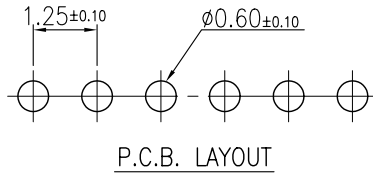
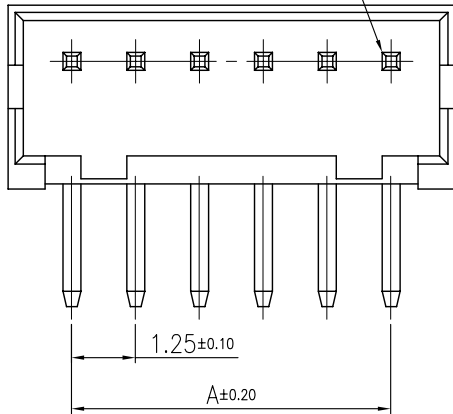
8 7 6 5 4 3 2 1

V1.1

REVISIONS							
SYM	DISCRIPTION	DATE	APPROVED	SYM	DISCRIPTION	DATE	APPROVED
△				△			
△				△			

****CUSTOMER DRAWING FOR REFERENCE ONLY, SAMPLES APPROVAL ARE REQUIRED!!**

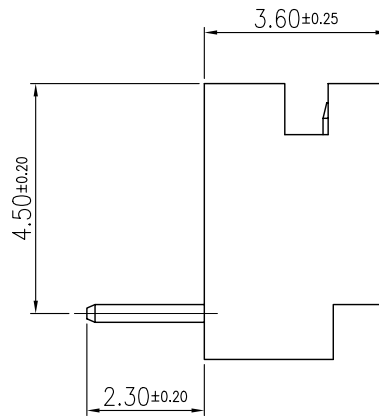
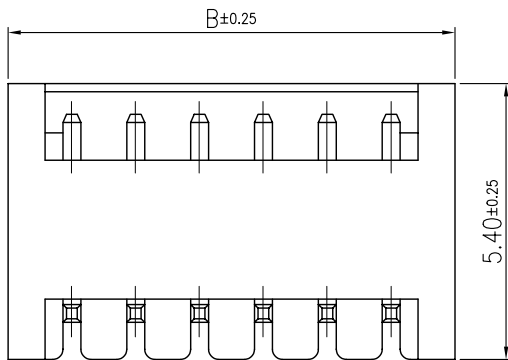
CIRCUIT 1



SPECIFICATIONS
 CURRENT RATING: 1A AC,DC
 VOLTAGE RATING: 100V AC,DC
 TEMPERATURE RANGE: -25°C ~ +85°C
 CONTACT RESISTANCE: 20MΩ MAX.
 INSULATION RESISTANCE: 500MΩ MIN.
 WITHSTAND VOLTAGE : 500V AC/MINUTE
 PIN MATERIAL: BRASS/TIN-PLATED
 MATERIAL: NYLON 66, UL94V-0

ORDER INFORMATION:
 MCu004-PaXXT
 MC: WAFER SERIES, WAFER
 u: PITCH: 1.25 mm
 004: SERIES NO.
 Pa: PCB TYPE, RIGHT ANGLE TYPE
 XX: NO. OF CONTACTS
 T: PLATING, TIN PLATING

PART NO.	Contacts	DIMENSIONS	
		A	B
MCu004-Pa02T	1X2	1.25	4.15
MCu004-Pa03T	1X3	2.50	5.40
MCu004-Pa04T	1X4	3.75	6.65
MCu004-Pa05T	1X5	5.00	7.90
MCu004-Pa06T	1X6	6.25	9.15
MCu004-Pa07T	1X7	7.50	10.40
MCu004-Pa08T	1X8	8.75	11.65
MCu004-Pa09T	1X9	10.00	12.90
MCu004-Pa10T	1X10	11.25	14.15
MCu004-Pa11T	1X11	12.50	15.40
MCu004-Pa12T	1X12	13.75	16.65
MCu004-Pa13T	1X13	15.00	17.90
MCu004-Pa14T	1X14	16.25	19.15
MCu004-Pa15T	1X15	17.50	20.40



MATING			HOUSING	MCu004-XX-H	TERMINAL	MCu004-T
TOLERANCES UNLESS OTHERWISE SPECIFIED ±0.30			SIGNATURES		DATE	MODEL
			DRAWN	KENNY	20/AUG/03'	TITLE
SYMBOL △	UNIT mm	SCALE 10/1	CHECKED	ZOLA	26/AUG/03'	NO.
			APPROVALS			
MMT CORPORATION						

8 7 6 5 4 3 2 1