

NO.	MATERIAL	FINISH, REMARKS	NO.	MATERIAL	FINISH, REMARKS
2	BRASS	CONTACT AREA: GOLD PLATED 0.1µm min LEAD AREA: TIN-COPPER PLATED 1µm min	5	POLYESTER	CLEAR (COVER TAPE)
1	POLYAMIDE	UNDER PLATING: NICKEL PLATED 1µm min BEIGE, UL94V-0	4	A-PET	CLEAR (EMBOSSED CARRIER TAPE)
			3	PHOSPHOR BRONZE	TIN-COPPER PLATED 1µm min UNDER PLATING: NICKEL PLATED 0.5µm min

CODE NO. (OLD) CL	DRAWN F. Mitsuoka 03.3.5	DESIGNED I. Doronaga 03.3.17	CHECKED T. Miyazaki 03.03.25	APPROVED T. Miyazaki 03.03.25	RELEASED
----------------------	--------------------------------	------------------------------------	------------------------------------	-------------------------------------	----------

DRAWING NO. EDC3-160309-19	PART NO. DF14A-*P-1.25H(56)
SCALE 5 : 1	CODE NO. CL538-
UNITS mm	

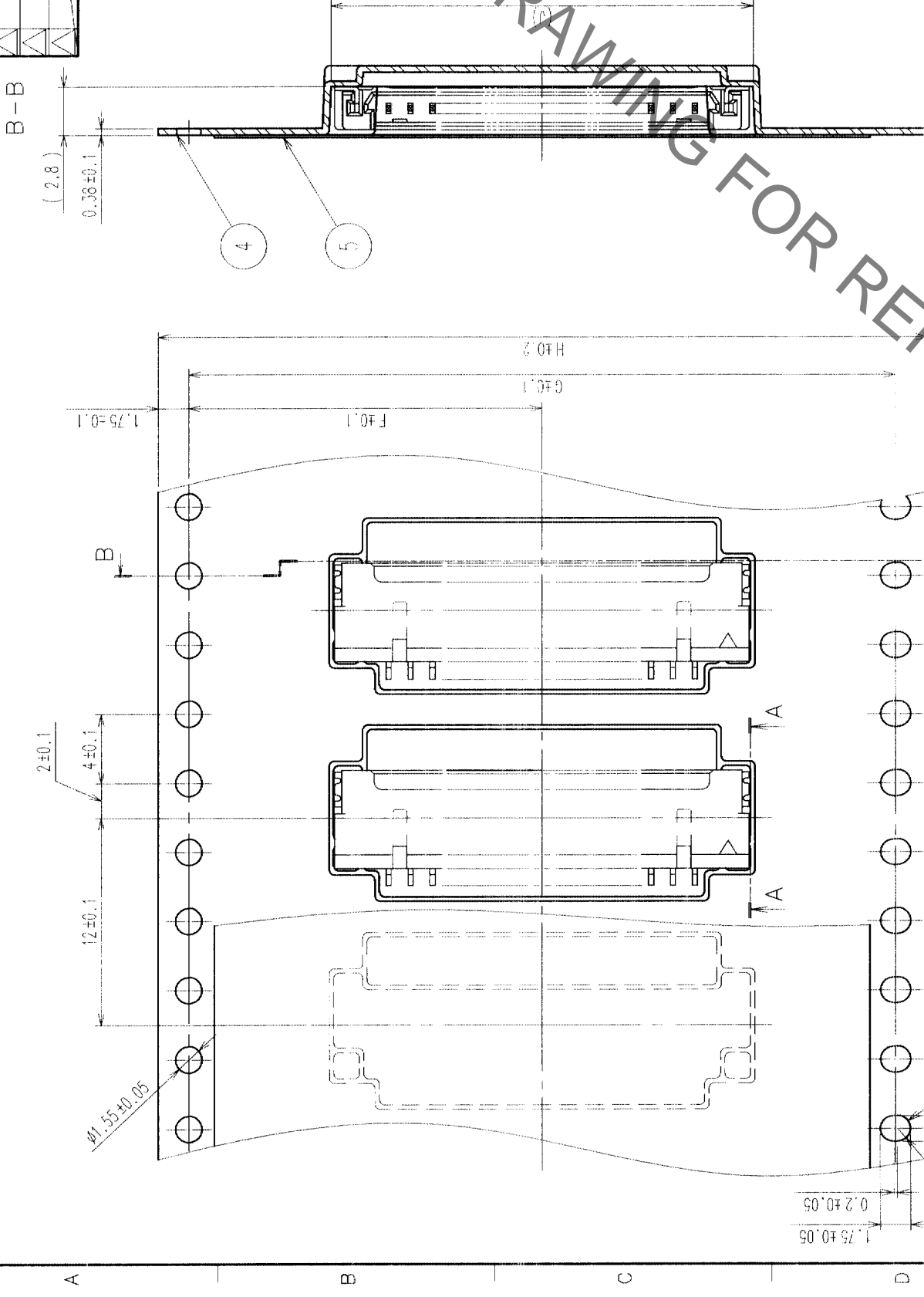
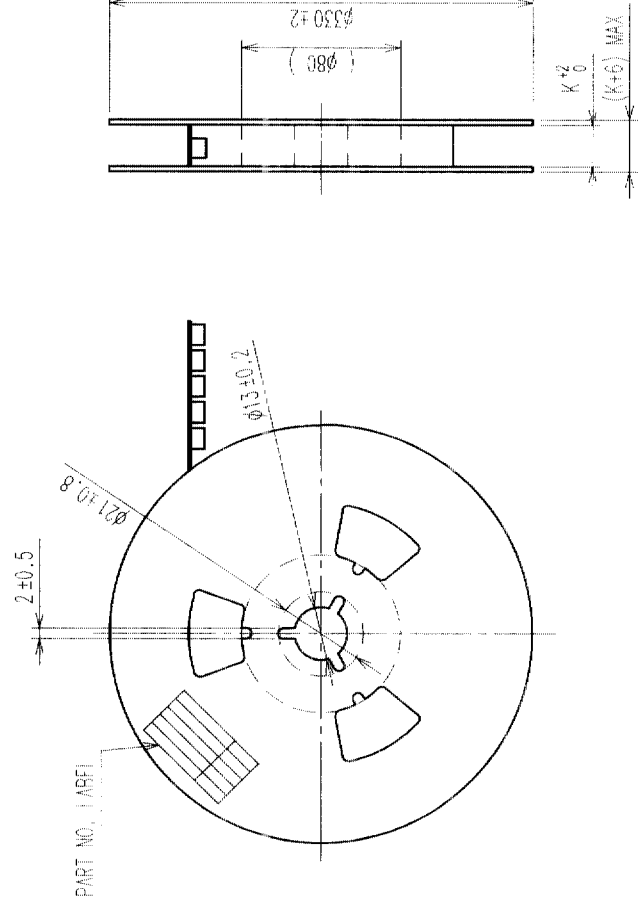
TO

Sep.1.2019 Copyright 2019 HIROSE ELECTRIC CO., LTD. All Rights Reserved.  
In case of consideration for using Automotive equipment / device which demand high reliability, kindly contact our sales window correspondents.

COUNT	DESCRIPTION OF REVISIONS	BY	CHKD	DATE	COUNT	DESCRIPTION OF REVISIONS	BY	CHKD	DATE

PART NO.	CONTACTS	F	G	H	J	K
DF14A-2P-1.25H(56)	2	7.5	-	16	7.85	16.4
DF14A-3P-1.25H(56)	3	7.5	-	16	9.1	16.4
DF14A-4P-1.25H(56)	4	11.5	-	24	10.35	24.4
DF14A-5P-1.25H(56)	5	11.5	-	24	11.6	24.4
DF14A-6P-1.25H(56)	6	11.5	-	24	12.85	24.4
DF14A-7P-1.25H(56)	7	11.5	-	24	14.1	24.4
DF14A-8P-1.25H(56)	8	11.5	-	24	15.35	24.4
DF14A-9P-1.25H(56)	9	11.5	-	24	16.6	24.4
DF14A-10P-1.25H(56)	10	11.5	-	24	17.85	24.4
DF14A-15P-1.25H(56)	15	20.2	40.4	44	24.1	44.4
DF14A-20P-1.25H(56)	20	20.2	40.4	44	30.35	44.4
DF14A-25P-1.25H(56)	25	26.2	52.4	56	36.6	56.4
DF14A-30P-1.25H(56)	30	26.2	52.4	56	42.85	56.4

STYLE AND DIMENSION OF REEL



DIRECTION OF UNREELING

SUPPLIER  
QUANTITY  
PART NO.  
CODE NO.  
DATE OF MANUFACTURED

DETAIL OF PART NO. LABEL

生産月日	年	月	日
CLコード	538	----	*-56
品名	DF14A-*P-1.25H(56)		
納入数量	1000個		
納入者	ヒロセ電機株式会社		

NOTE 4 1 REEL : 1000 CONNECTORS

5 AT THE BEGINNING OF THE REEL , 30 COMPONENTS SHALL BE EMPTY .

6 AT THE END OF THE REEL , 20 COMPONENTS SHALL BE EMPTY .

WHEN THE TAPE WIDTH IS 44 TO 56mm , SPROCKET HOLES SHALL BE SET ON BOTH SIDES OF REEL AS SHOWN ON THIS DRAWING .

NO.	MATERIAL	FINISH, REMARKS	NO.	MATERIAL	FINISH, REMARKS
CODE NO. (OLD) CL			DRAWN F. Mutsaers S. Sempereys	CHECKED T. Miyajima	APPROVED T. Miyajima
			DESIGNED 03.3.5		RELEASED 03.03.25
DRAWING NO. EDC3-160309-19			PART NO. DF14A-*P-1.25H(56)		
SCALE FREE			CODE NO. CL538-		
UNITS mm					

TO

F

E

D

C

B

A

8

7

6

5

4

3

2

1

NC

2

8

8

7

6

5

4

3

2

1

8

7

6

5

4

3

2

NC

2