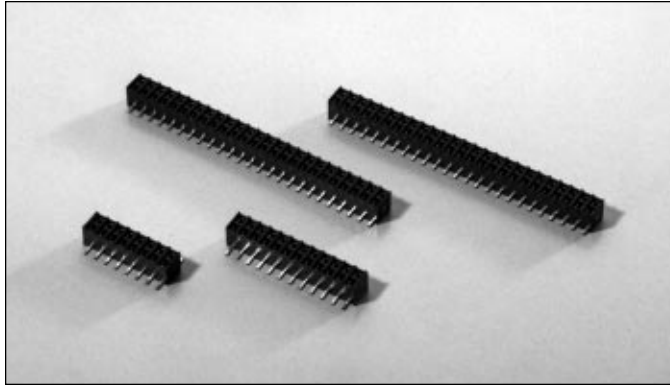


# .079" (2mm) Surface Mount Dual Row Bottom Entry Connectors



## 8000 SERIES "POST/BOXE"

PART NUMBER LEGEND

### 800X-2XX-503

NUMBER OF POSITIONS PER ROW

2 - 25

CONTACT FINISH

0 = TIN/LEAD

8 = .000030 SELECTIVE GOLD

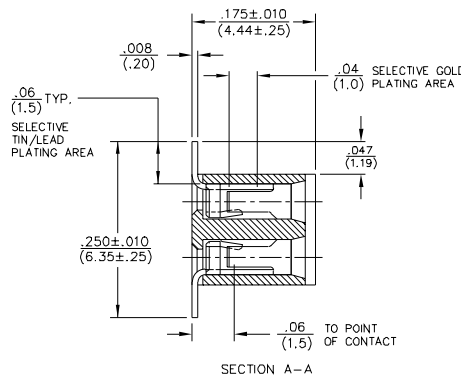
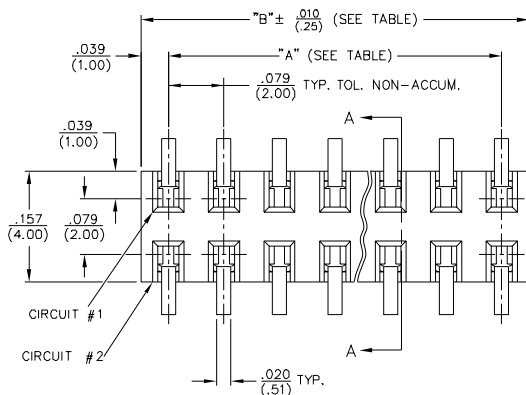
F = .000015 SELECTIVE GOLD

### MATING HEADERS: 8100 SERIES

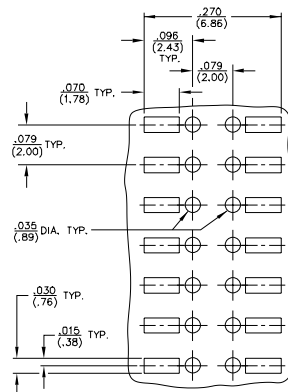
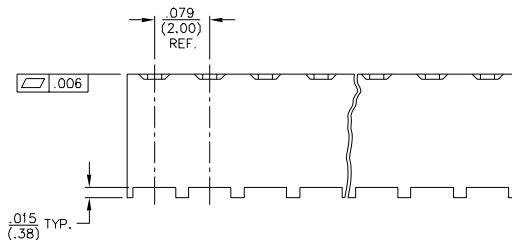
#### NOTES:

- INSULATOR MATERIAL: POLYESTER (PCT), UL 94V-0  
COLOR: BLACK
- CONTACT MATERIAL: PHOSPHOR BRONZE
- CONTACT PLATING:  
8000-2XX-503: .0001-.0002 90/10 BRITE TIN/LEAD  
OVER .000050/.000150 NICKEL PLATE.  
8008-2XX-503: .000030 SELECTIVE GOLD PLATING AS  
INDICATED OVER .000050/.000150 NICKEL  
PLATE ALL OVER; .0002 MIN. TIN/LEAD  
PLATING ON SOLDER TAIL AS INDICATED.  
800F-2XX-503: .000015 SELECTIVE GOLD PLATING AS  
INDICATED OVER .000050/.000150 NICKEL  
PLATE ALL OVER; .0002 MIN. TIN/LEAD  
PLATING ON SOLDER TAIL AS INDICATED.
- ALL DIMENSIONS ARE IN IN./(MM)
- CONTACT RETENTION: 1 LB.

### ADDITIONAL SPECIFICATIONS



PART NUMBER	NO. OF CIRCUITS	DIM. "A"	DIM. "B"
800X-202-503	4	.079 (2.00)	.158 (4.00)
-203-	6	.158 (4.00)	.236 (6.00)
-204-	8	.236 (6.00)	.315 (8.00)
-205-	10	.315 (8.00)	.394 (10.00)
-206-	12	.394 (10.00)	.472 (12.00)
-207-	14	.472 (12.00)	.551 (14.00)
-208-	16	.551 (14.00)	.630 (16.00)
-209-	18	.630 (16.00)	.709 (18.00)
-210-	20	.709 (18.00)	.787 (20.00)
-211-	22	.787 (20.00)	.866 (22.00)
-212-	24	.866 (22.00)	.945 (24.00)
-213-	26	.945 (24.00)	1.024 (26.00)
-214-	28	1.024 (26.00)	1.102 (28.00)
-215-	30	1.102 (28.00)	1.181 (30.00)
-216-	32	1.181 (30.00)	1.260 (32.00)
-217-	34	1.260 (32.00)	1.339 (34.00)
-218-	36	1.339 (34.00)	1.417 (36.00)
-219-	38	1.417 (36.00)	1.496 (38.00)
-220-	40	1.496 (38.00)	1.575 (40.00)
-221-	42	1.575 (40.00)	1.654 (42.00)
-222-	44	1.654 (42.00)	1.732 (44.00)
-223-	46	1.732 (44.00)	1.811 (46.00)
-224-	48	1.811 (46.00)	1.890 (48.00)
800X-225-503	50	1.890 (48.00)	1.968 (50.00)



RECOMMENDED P.C. BOARD PATTERN  
(COMPONENT SIDE SHOWN)  
SCALE: 8/1