

TABLE 1
CONTACT SPECIFICATION

-XX	-S, -D, -T, -P	-S-RA, -P-RA	-D-RA	-T-RA
-01	C-8-1-X	N/A	N/A	N/A
-02	C-8-2-X	C-8-2-X	C-8-2-X C-8-3-X	C-8-2-X C-8-3-X C-8-5-X
-03	C-8-3-X	C-8-3-X	C-8-3-X C-8-5-X	N/A
-04	C-08-5-X	C-08-5-X	N/A	N/A
-06	C-8-6-X	N/A	N/A	N/A
-21	C-17-1-X	N/A	N/A	N/A
-22	C-17-2-X	C-17-2-X	C-17-2-X C-17-3-X	C-17-2-X C-17-3-X C-17-5-X
-23	C-17-3-X	C-17-3-X	C-17-3-X	N/A
-24	C-17-5-X	C-17-5-X	N/A	N/A

SSW-1XX-XX-XXX-X-XX-XX-XX

BODY LENGTH SPEC
-01 THRU -50
(-P OPTION: 36 POS MAX.)

CONTACT SPECIFICATION
(SEE TABLE 1)
-01 THRU -06 (STD. INS. FORCE)
-21 THRU -24 (LOW INS. FORCE)

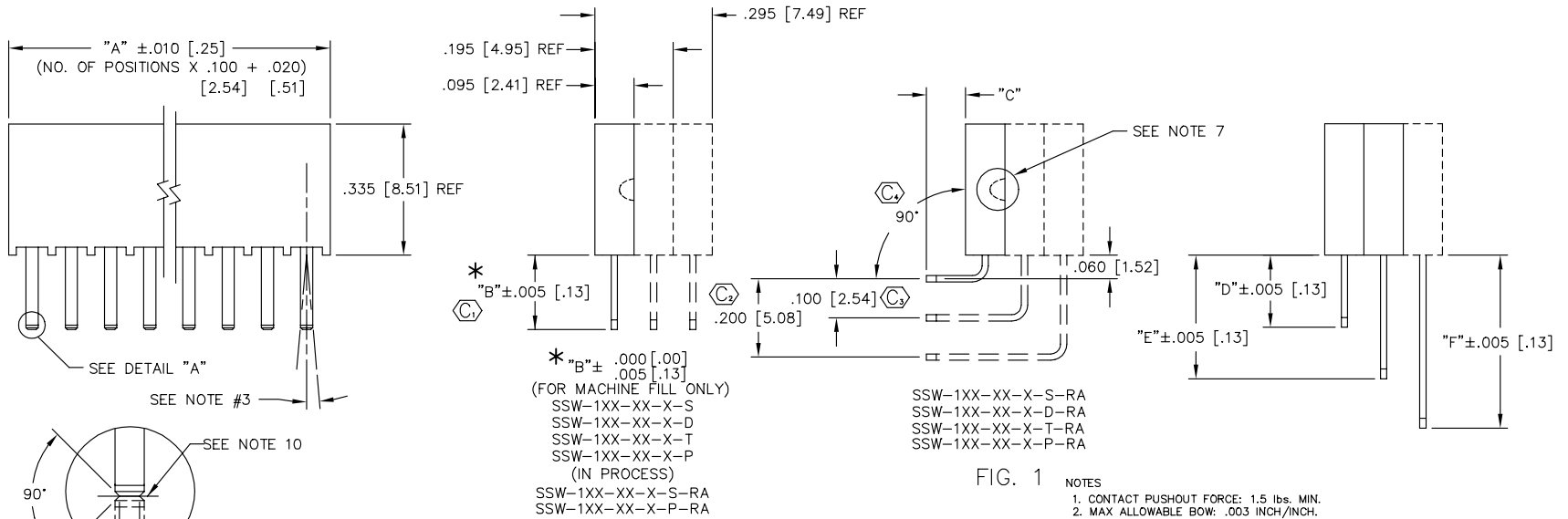
PLATING SPECIFICATION
-G: GOLD- SPECIFY -G IN CONTACT SUFFIX -X
-T: TIN- SPECIFY -T IN CONTACT SUFFIX -X
(CONTACT -21 THRU -24 N/A)
-S: SELECTIVE- SPECIFY -S IN CONTACT SUFFIX -X
-H: HEAVY- SPECIFY -H IN CONTACT SUFFIX -X
-E: EXTRA HEAVY- SPECIFY -E IN CONTACT SUFFIX -X
(CONTACT -01 & -02 STRAIGHT ONLY)
-F: FLASH SELECTIVE- SPECIFY -F IN CONTACT SUFFIX -X
-P: GOLD FLASHED PALLADIUM NICKEL- SPECIFY -P IN CONTACT SUFFIX -X
-STL: SELECTIVE TIN/LEAD- SPECIFY -STL IN TERMINAL SUFFIX -XX
-TL: TIN/LEAD- SPECIFY -TL IN TERMINAL SUFFIX -X
(AVAILABLE ONLY ON LEAD STYLES -01.)
-TM: MATTE TIN SPECIFY -TM IN TERMINAL SUFFIX -X
(CONTACT -21 THRU -24 N/A)
-SM: HEAVY GOLD SELECTIVE, MATTE TIN TAIL
SPECIFY -LM IN TERMINAL SUFFIX -X
-FM: FLASH GOLD SELECTIVE, MATTE TIN TAIL
SPECIFY -FM IN TERMINAL SUFFIX -X

OPTION
-LL: LOCKING LEAD
(SEE SHEET 2)
(N/A IN SINGLE ROW,
1 & 2 POSITION)

POLARIZING OPTION
INDICATE POS- SEE FIG. 3

OPTION
-RA: RIGHT ANGLE (SEE FIG. 1)
(CONTACT -01 & -21 N/A)

BODY SPECIFICATION
-S: USE SSW-XX-S
-D: USE SSW-XX-D
-T: USE SSW-50-T
-P: USE SSW-36-P
-Q: USE SSW-50-T (TRIPLE ROW
WITH ONLY 2 OUTER ROWS FILLED)



- FIG. 1 NOTES**
- CONTACT PUSHOUT FORCE: 1.5 lbs. MIN.
 - MAX ALLOWABLE BOW: .003 INCH/INCH.
 - MAX ALLOWABLE SWAY: 2" IN EITHER DIRECTION
FOR HAND FILL & 1" EITHER DIRECTION FOR MACHINE FILL.
 - MAX ALLOWABLE VARIATION BETWEEN PIN ROWS: .010
 - "END WALLS" AFTER CUTTING SHOULD BE .020±.003.
 - (C) REPRESENTS CRITICAL DIMENSION.
 - NOTCH ON -P-RA OPTION TO BE ORIENTED AS SHOWN.
 - MAX CUT FLASH: .015 WITH NO FLASH BELOW STANDOFFS OR IN CONTACT HOLES.
 - SHEAR LOCATION TO BE WITHIN .001" [.03] OF THE BREAK OFF CENTER LOCATION.
 - SHEAR LOCATION TO BE WITHIN .001" [.03] OF THE BREAK OFF CENTER LOCATION FOR MACHINE FILL.

	IN-PROCESS	"D"	"E"	"F"
SSW-1XX-02-X-D-RA	.194 [4.93]	.394 [10.01]	.594 [15.09]	-----
SSW-1XX-03-X-D-RA	.394 [10.01]	.594 [15.09]	-----	-----
SSW-1XX-02-X-T-RA	.194 [4.93]	.394 [10.01]	.594 [15.09]	-----

TABLE 2

CONTACT	"B"	"C" REF			
	-S(-RA), -D, -T	-S-RA	-D-RA	-T-RA	
-01, -21	.104 [2.64]	N/A	N/A	N/A	
-02, -22	.194 [4.93]	.100 [2.54]	.100 [2.54]	.100 [2.54]	
-03, -23	.394 [10.01]	.300 [7.62]	.300 [7.62]	N/A	
-04, -24	.584 [14.83]	.490 [12.45]	N/A	N/A	
-06	.124 [3.15]	N/A	N/A	N/A	

MATERIAL:

INSULATORS:
SINGLE
PRIMARY MATERIAL: VECTRA E130I
ALTERNATE MATERIAL: VECTRA LCP 335
COLOR: BLACK

DOUBLE:
PRIMARY MATERIAL: VECTRA E130
ALTERNATE MATERIAL: ZENITE 6130
COLOR: BLACK

TRIPLE ROW MATERIAL: THERMX CG907
COLOR: BLACK

TERMINAL:
PHOSPHOR BRONZE, SPRING TEMPER,
ALLOY 511 OR 510
(TENSILE STRENGTH 90-100 KSI)
(YIELD STRENGTH @ 2% OFFSET
88-98 KSI) PER MIL-B-13501
THICKNESS: .0250±.001 [.635±.03]

MISC/MKT
SSW-MKT

samtec

520 PARK EAST BLVD. NEW ALBANY, INDIANA 47150
PHONE (812) 944-6733 P.O. BOX 1147
CODE 55322

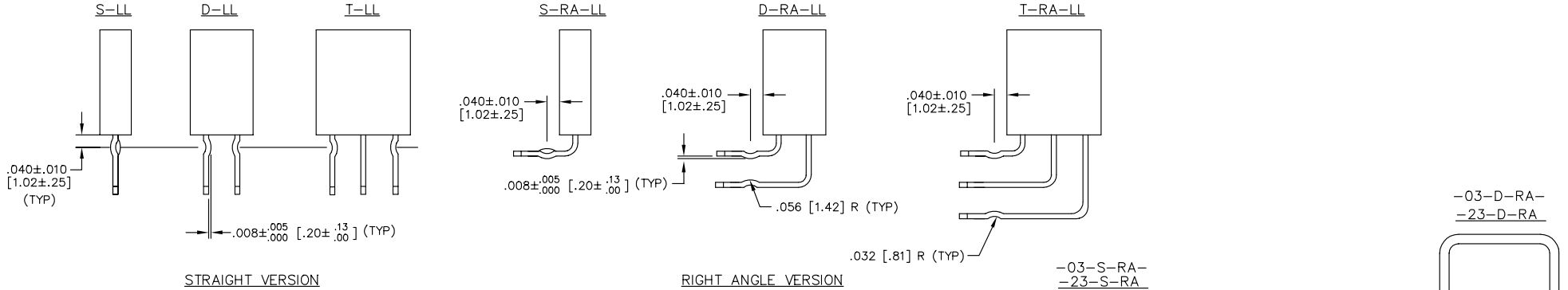
MADE BY: PURVIS 6-12-87

SSW-1XX-XX-XXX-X-XX-XX-XX
SHEET 1 OF 2

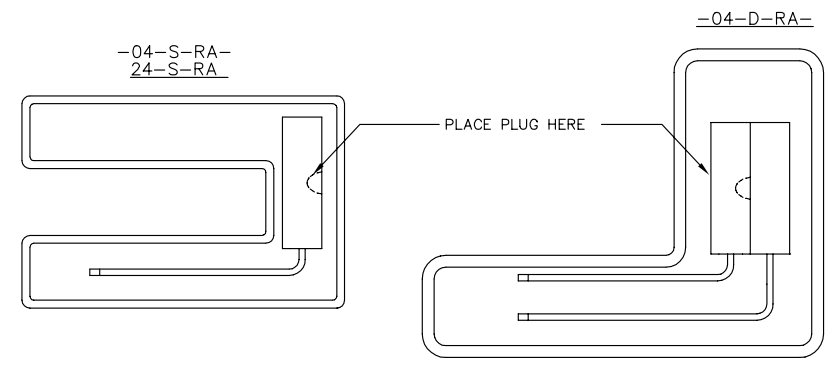
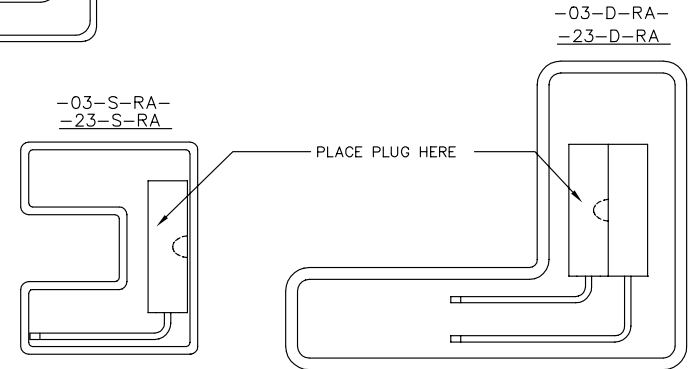
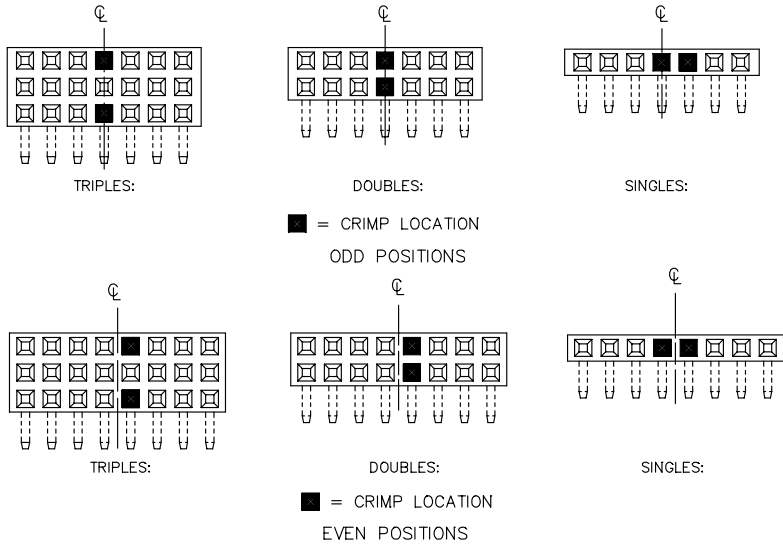
PROPRIETARY NOTE
THIS DOCUMENT CONTAINS INFORMATION CONFIDENTIAL AND PROPRIETARY TO SAMTEC INC. AND SHALL NOT BE REPRODUCED OR TRANSMITTED IN ANY FORM OR BY ANY MEANS, ELECTRONIC OR MECHANICAL, INCLUDING PHOTOCOPYING, RECORDING, OR BY ANY INFORMATION STORAGE AND RETRIEVAL SYSTEM, WITHOUT THE WRITTEN CONSENT OF SAMTEC INC.

LOCKING LEAD OPTION

DIMENSIONS ARE IN INCHES		UNLESS OTHERWISE NOTED		TOLERANCES ARE:		TITLE: ASSEMBLY, SOCKET STRIP .016 X .031 TAIL [.41] [.79]	DWG NO: SSW-1XX-XX-X-X-XX-XX-XX SHEET 2 OF 2
ONE PLACE DECIMALS ±	TWO PLACE DECIMALS ±	THREE PLACE DECIMALS ± .010 [.25]	FOUR PLACE DECIMALS ± .0050 [.127]	ANGLES ± 2°			



CRIMP LOCATION
(STRAIGHT & RA VERSIONS)



NOTE:
LEAD STYLE X2-RA TO BE LAYER PACKAGED.

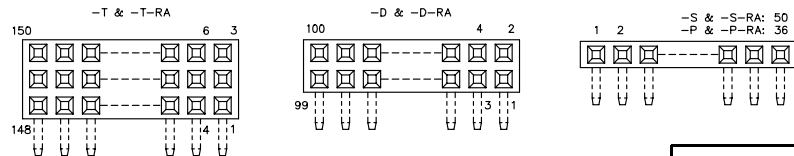


FIG. 3

POLARIZATION LOCATION

INSERT PK-06 INTO SPECIFIED POS AND BREAK OFF TAB

DELETED

PART #	TUBE	PLUG
-03/-23-S-RA SINGLE-RIGHT ANGLE	PT-3-24-01-01	TP-03
-04/24-S-RA SINGLE-RIGHT ANGLE	PT-3-24-05-01	TP-03
-03/-04/-23-D-RA DOUBLE-RIGHT ANGLE	ASP-90341-01-S	TP-07
SSW-T-RA & SSW-Q-RA	PT-1-24-04-40	TP-07

PROPRIETARY NOTE
THIS DOCUMENT CONTAINS INFORMATION CONFIDENTIAL AND PROPRIETARY TO SAMTEC INC. AND SHALL NOT BE REPRODUCED OR TRANSMITTED TO OTHER DOCUMENTS OR DISCLOSED TO OTHERS OR USED FOR ANY PURPOSE OTHER THAN THAT FOR WHICH IT WAS OBTAINED WITHOUT THE EXPRESS WRITTEN CONSENT OF SAMTEC INC.

samtec

520 PARK EAST BLVD. NEW ALBANY, INDIANA 47150
PHONE (812) 944-6733 P.O. BOX 1147
CODE 55322

MADE BY: PURVIS 6-12-87

SSW-1XX-XX-X-X-XX-XX-XX
SHEET 2 OF 2