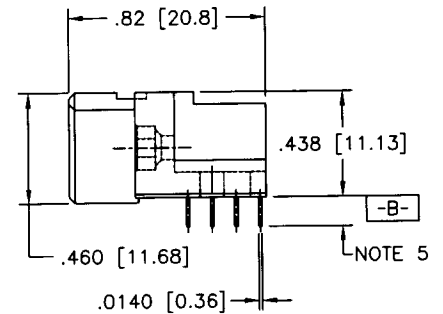
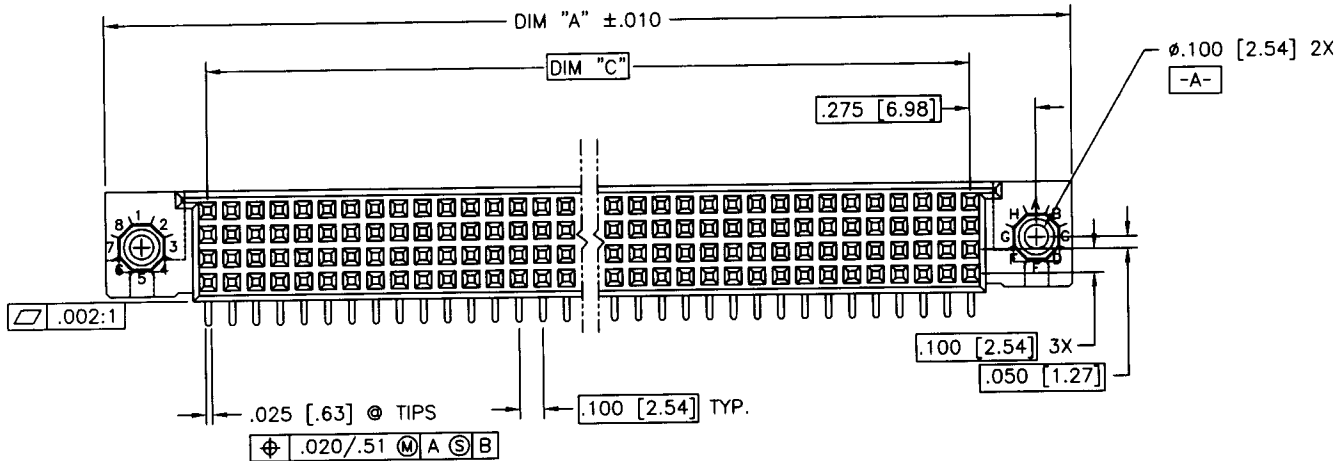
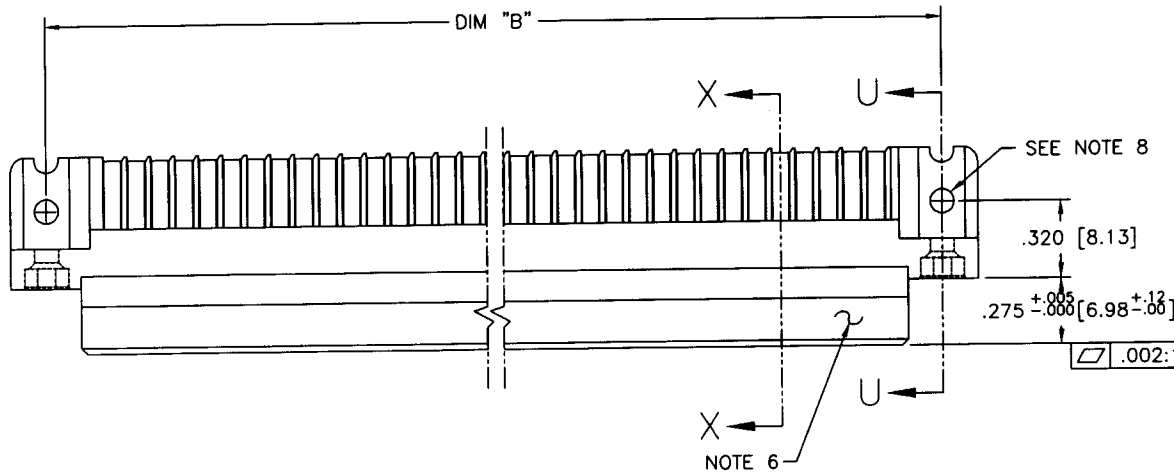


Tous droits strictement réservés. Reproduction ou communication a des tiers interdite sous quelque forme que ce soit sans autorisation écrite du propriétaire. Propriété de c FCI. Droits de reproduction FCI.

All rights strictly reserved. Reproduction or issue to third parties in any form whatever is not permitted without written authority from the proprietor. Property of FCI. Copyright FCI.

PRODUCT NUMBER  
SEE NOTE 1



mat'l. code NOTE 3				tolerances unless otherwise specified				CUSTOMER COPY		Electronics www.fciconnect.com	
A	V70447	MSC	4/1/97	linear	.XX $\pm$ .01/.X $\pm$ .3		projection		title		
B	V80315	MSC	2/19/98		.XXX $\pm$ .005/.XX $\pm$ .13				4 ROW R/A TT RECEPTACLE SOLDER TO BOARD, 0 G.P.		
C	V80732	HTB	4/16/98	angles	.XXX $\pm$ .0020/.XXX $\pm$ .051		INCH/MM		product family HPC		
D	V94069	HTB	10/21/99	dr	0' $\pm$ 2'		scale		code		
E	V00260	JWS	1/25/00	engr	M. CLOUSER	4/1/97	1:1		213		
F	V01359	CGD	6/28/00	chr	S. CLARK	4/1/97			sheet		
G	V02770	LSS	11/21/00	appd	S. CLARK	4/1/97			1 of 3		
sheet	revision	G	G	G							
index	sheet	1	2	3							

cage code  
22526

ACAD

PDM: Rev:G

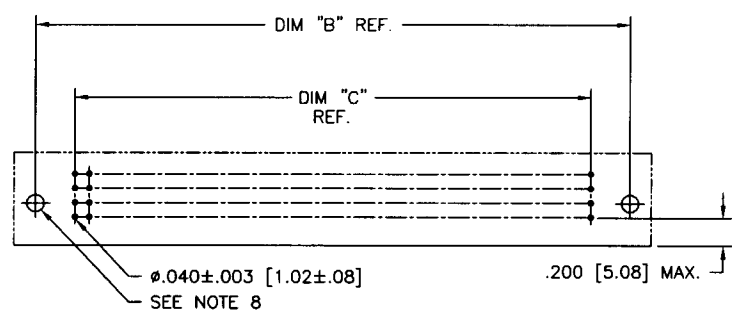
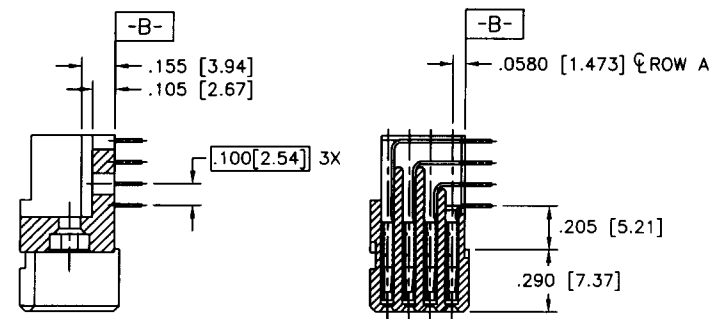
STATUS: Released

Printed: Sep 27, 2003

PRODUCT NUMBER	DIM.	LENGTH FORMULAS
SEE NOTE 1	DIM A	.100/2.54 X NO. OF COLUMNS + .75/19.1
	DIM B	.100/2.54 X NO. OF COLUMNS + .450/11.43
	DIM C	.100/2.54 X NO. OF COLUMNS - .100/2.54

NOTES:

- PRODUCT NUMBERING CODE:  
51093 - X YYY Z S  
SPECIAL FEATURES(NOTE 8)  
TAIL LENGTH(NOTE 5)  
NO. OF POSITIONS(NOTE 2)  
PLATING(NOTE 4)  
BASE NUMBER  
  
PRODUCT NUMBERING CODE FOR  
SELECT LOAD PART NUMBERS:  
51093 - XX YYY  
SEQUENCE NUMBER  
ALWAYS "XX"  
BASE NUMBER
- THIS PRODUCT IS CONFIGURED IN SIZES OF 6 thru 80 COLUMNS IN INCREMENTS OF ONE.  
i.e.: 6,7,8,9.....79,80.
- HOUSING MATERIAL: GLASS AND MINERAL FILLED HIGH TEMP. THERMO PLASTIC. FLAME RETARDANT PER UL94V-0. COLOR: BLACK. CONTACT MATERIAL: BeCu
- CONTACT AREA PLATING OPTIONS:  
1 = 30u"/.76u GOLD  
3 = 50u"/1.27u GOLD  
5 = 30u"/.76u GXT  
ALL SOLDER TAILS TIN/LEAD
- TAIL LENGTH OPTIONS:  
E = .125±.010 / 3.18±.25  
F = .145±.010 / 3.68±.25
- MANUFACTURE NAME, PART NUMBER AND LOT CODE TO APPEAR ON THIS SURFACE PER BUS-12-108.
- FOR DOCUMENTATION MENU, SEE SPEC. BUS-01-057.
- SPECIAL FEATURES: (SEE SHEET 3)  
- = IF CODE IS OMITTED FROM PRODUCT NO.; CONNECTOR IS PROVIDED AS SHOWN, NO SPECIAL FEATURES ARE SELECTED. FOR P.C.B. ATTACHMENT IN A .120 [3.05] MOUNTING HOLE.  
"A" = IF SPECIFIED, PRE-INSTALLED CLAW FOR P.C.B. ATTACHMENT IN A Ø.100 MOUNTING HOLE. (AVAILABLE IN "E" TAIL LENGTH ONLY)  
"B" = IF SPECIFIED, PRE-INSTALLED CLAW FOR P.C.B. ATTACHMENT IN A Ø.120 MOUNTING HOLE.  
"C" = IF SPECIFIED, MOLDED GUIDE PINS w/CLAW FOR P.C.B. ATTACHMENT IN A Ø.120 MOUNTING HOLE.  
"D" = IF SPECIFIED, MOLDED GUIDE PINS w/ Ø.120 MOUNTING HOLE. (NO CLAW)
- CLAW DIMENSION DETERMINED BY P.C.B. HOLE DIAMETER.
- CENTERLINE OF GUIDE PIN TO BE IN ALIGNMENT W/ CENTERLINE OF TERMINAL FIELD.



RECOMMENDED PCB LAYOUT (ALL HOLES LOCATED ON .100 [2.54] GRID UNLESS OTHERWISE SPECIFIED)

mat'l. code				tolerances unless otherwise specified		CUSTOMER COPY		FCI Electronics www.fciconnect.com	
ltr	ecn no	dr	date	linear	.XX±.01/.X±.3	projection	INCH/MM	product family	code
G					.XXX±.005/.XX±.13				
				angles	.XXX±.0020/.XXX±.051	scale	1:1	product size	sheet
				0° ±2'	4/1/97				
				dr	4/1/97				
				engr	S. CLARK				
				chr	S. CLARK				
				appd	S. CLARK				
sheet index	revision sheet								

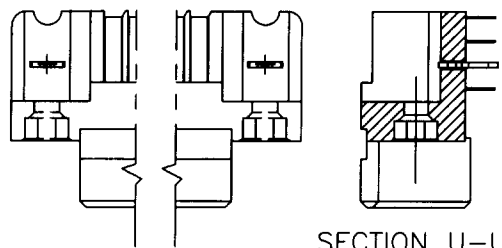
cage code 22526

Tous droits strictement reserves. Reproduction ou communication a des tiers interdite sous quelque forme que ce soit sans autorisation ecrite du proprietaire. Propriete de c FCI. Droits de reproduction FCI.

All rights strictly reserved. Reproduction or issue to third parties in any form whatever is not permitted without written authority from the proprietor. Property of FCI. Copyright FCI.

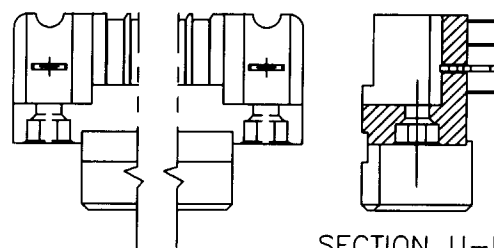
PRODUCT NUMBER  
SEE NOTE 1

SPECIAL FEATURE OPTION A



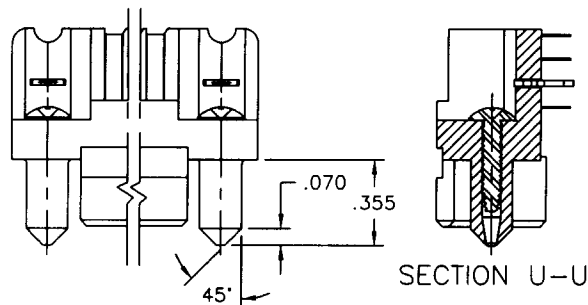
SECTION U-U

SPECIAL FEATURE OPTION B



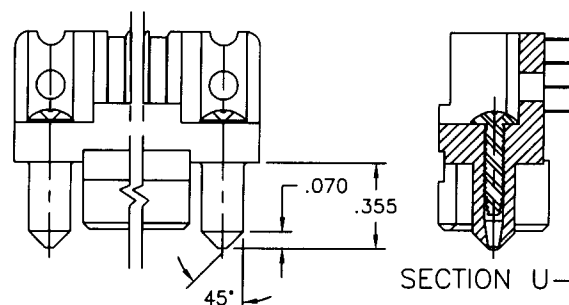
SECTION U-U

SPECIAL FEATURE OPTION C

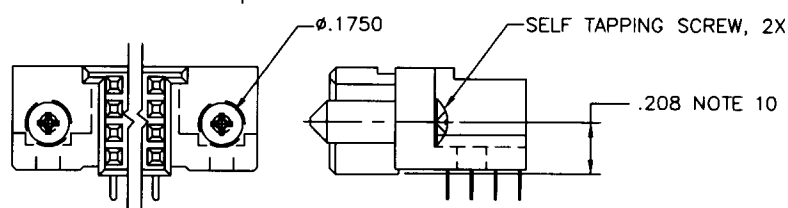
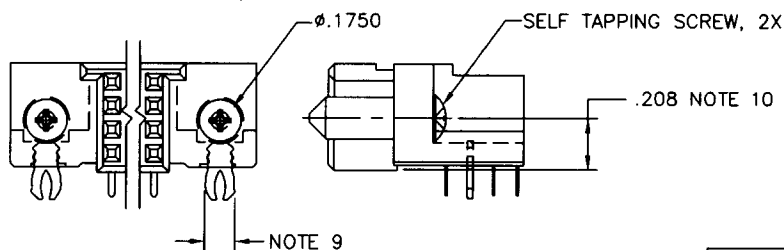


SECTION U-U

SPECIAL FEATURE OPTION D



SECTION U-U



Tous droits strictement reserves. Reproduction ou communication a des tiers interdite sous quelque forme que ce soit sans autorisation écrite du propriétaire. Propriete de c FCI. Droits de reproduction FCI.



All rights strictly reserved. Reproduction or issue to third parties in any form whatever is not permitted without written authority from the proprietor. Property of FCI. Copyright FCI.

mat'l. code				tolerances unless otherwise specified		CUSTOMER COPY	Electronics www.fciconnect.com		
ltr	ecn no	dr	date	linear	.XX±.01/.X±.3		projection	title	
G					.XXX±.005/.XX±.13			4 ROW R/A TT RECEPTACLE	
				angles	.XXX±.0020/.XXX±.051		INCH/MM	SOLDER TO BOARD, 0 G.P.	
				dr	0° ±2'	scale		product family	HPC
				enr			N.T.S.	size	dwg no
				chr	C.DAILY 6/28/00			A	51093
				appd	M. GRAY 6/28/00				3 of
sheet index	revision sheet							cage code	
								22526	