

**SPECIFICATIONS**

**BreakaWay Header**

**HB24 Series**  
**T/H Type**  
**2.54mm [.100"] Pitch**

**Mechanical**

**Contact Retention Force:** 0.91g min.

**Electrical**

**Current Rating:** 3.0A per pin min.

**Dielectric Withstanding Voltage:** 500V AC

**Insulation Resistance:** 1000MW min

**Physical**

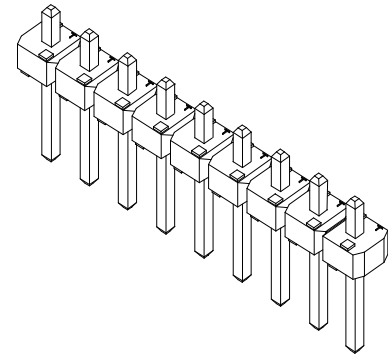
**Housing:** PBT, Glass Filled, UL94V-0

**Contact:** Copper Alloy

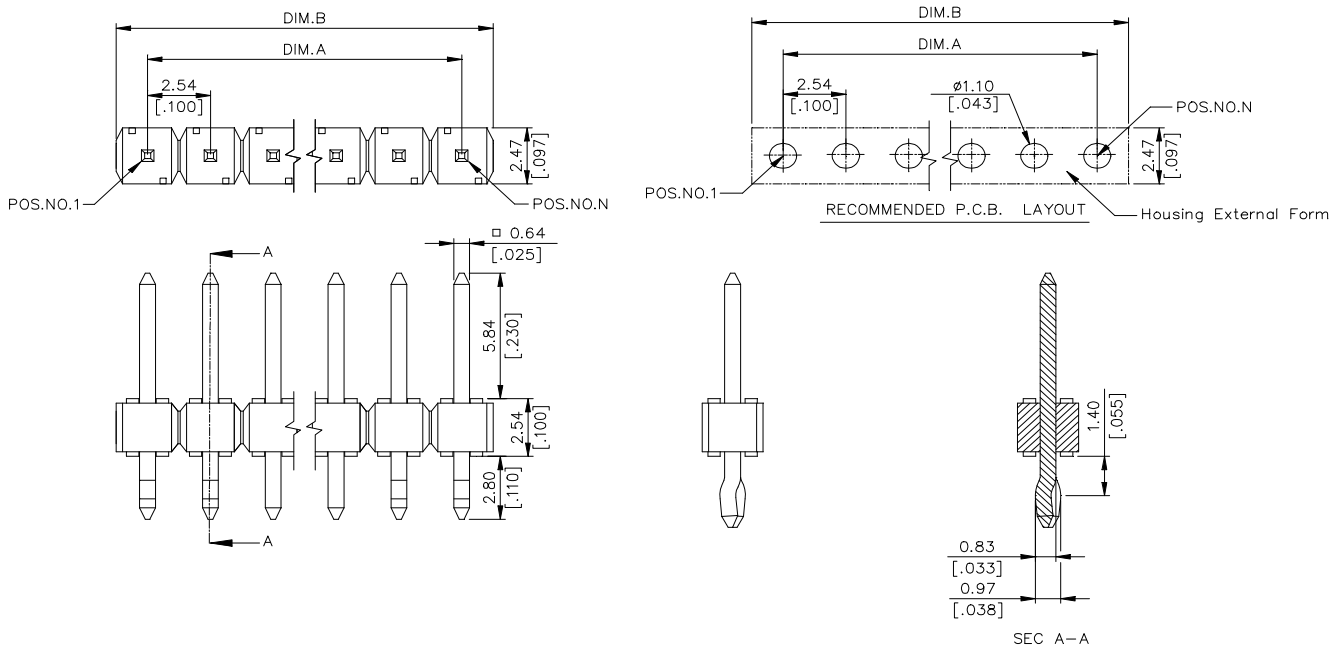
**Plating:** See "ORDERING INFORMATION"

**Solder Pad:** Copper Alloy

**Operating Temperature:** -40 to +85



**DRAWING**



**ORDERING INFORMATION**

**PRODUCT NO.:** HB 24 \* \* \* - \* \* \* \*

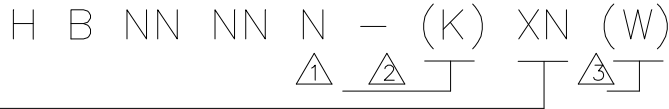
- Breakaway Header Series
- Termination & Contact Type
- No. Of Pos
  - 1=1 Pos
  - 2=2 Pos
  - ⋮
  - 40=40 Pos
- Optional For Plating
- Position Omitted
- See DWG. 307-0000-210
- Optional For Housing Color
- See DWG. 307-0000-210
- Optional For Kinks
- See DWG. 307-0000-210

**ORDERING INFORMATION**

HB2420*-****	20	45.72 [1.900]	50.55 [1.990]
HB2419*-****	19	45.72 [1.800]	48.01 [1.890]
HB2418*-****	18	43.18 [1.700]	45.47 [1.790]
HB2417*-****	17	40.64 [1.600]	42.93 [1.690]
HB2416*-****	16	38.10 [1.500]	40.39 [1.590]
HB2415*-****	15	35.46 [1.400]	37.85 [1.490]
HB2414*-****	14	33.02 [1.300]	35.31 [1.390]
HB2413*-****	13	30.48 [1.200]	32.77 [1.290]
HB2412*-****	12	27.94 [1.100]	30.23 [1.190]
HB2411*-****	11	25.40 [1.000]	27.69 [1.090]
HB2410*-****	10	22.86 [.900]	25.15 [.990]
HB2409*-****	9	20.32 [.800]	22.61 [.890]
HB2408*-****	8	17.78 [.700]	20.07 [.790]
HB2407*-****	7	15.24 [.600]	17.53 [.690]
HB2406*-****	6	12.70 [.500]	14.99 [.590]
HB2405*-****	5	10.16 [.400]	12.45 [.490]
HB2404*-****	4	7.62 [.300]	9.91 [.390]
HB2403*-****	3	5.08 [.200]	7.37 [.290]
HB2402*-****	2	2.54 [.100]	4.83 [.190]
HB2401*-****	1	0.00 [0.00]	2.29 [.090]
P/N	POS.	DIM. A	DIM. B

HB2440*-****	40	99.06 [3.900]	101.35 [3.990]
HB2439*-****	39	96.52 [3.800]	98.81 [3.890]
HB2438*-****	38	93.98 [3.700]	96.27 [3.790]
HB2437*-****	37	91.44 [3.600]	93.73 [3.690]
HB2436*-****	36	88.90 [3.500]	91.19 [3.590]
HB2435*-****	35	86.36 [3.400]	88.65 [3.490]
HB2434*-****	34	83.82 [3.300]	86.11 [3.390]
HB2433*-****	33	81.28 [3.200]	83.57 [3.290]
HB2432*-****	32	78.74 [3.100]	81.03 [3.190]
HB2431*-****	31	76.20 [3.000]	25.15 [3.090]
HB2430*-****	30	73.66 [2.900]	37.85 [2.990]
HB2429*-****	29	71.12 [2.800]	35.31 [2.890]
HB2428*-****	28	68.58 [2.700]	32.77 [2.790]
HB2427*-****	27	66.04 [2.600]	30.23 [2.690]
HB2426*-****	26	63.50 [2.500]	27.69 [2.590]
HB2425*-****	25	58.42 [2.400]	63.25 [2.490]
HB2424*-****	24	55.88 [2.300]	60.71 [2.390]
HB2423*-****	23	53.34 [2.200]	58.17 [2.290]
HB2422*-****	22	50.80 [2.100]	55.63 [2.190]
HB2421*-****	21	48.26 [2.000]	53.09 [2.090]
P/N	POS.	DIM. A	DIM. B

307-0000-210



CODE	DESCRIPTION
K0	ALL PINS WITH KINK.
K3	SAME AS REMARK $\Delta$
B8	5th & 12th & 14th & 25th PINS OMITTED.
B9	2nd & 4th & 7th PINS OMITTED.
D0	
D1	2nd & FINAL 2nd PINS OMITTED.
D2	20th POSITION OMITTED.
D3	4th & 21st POSITION OMITTED.
D4	8th POSITION OMITTED.
D5	3rd POSITION OMITTED.
D6	2nd, 4th, 6th & 10th POSITION OMITTED.
D7	4th, 8th, 12th, 16th, 20th, & 24th POSITION OMITTED.
D8	3rd,4th,6th,9th,13th & 15th POSITION OMITTED.
D9	3rd & 4th POSITION OMITTED.
P0	4th POSITION OMITTED.
P1	6th POSITION OMITTED.
P2	9th & 10th POSITION OMITTED.
P3	2nd POSITION OMITTED.
P4	5th POSITION OMITTED.
P5	10th POSITION OMITTED.
P6	2nd, 6th, 9th & 11th POSITION OMITTED.
P7	3rd, 5th, 8th POSITION OMITTED.
P8	7th POSITION OMITTED.
P9	9th POSITION OMITTED.
T0	2nd, 9th, 11th, 14th, 17th, 20th, 21st & 23rd POSI. OMITTED.
T1	1st & END PINS WITH KINK, 2nd POSITION OMITTED.
T2	ALL PINS WITH KINK, 3rd & 4th POSITION OMITTED.
T3	ALL PINS WITH KINK, 5th & 6th POSITION OMITTED.
T4	2nd, 9th, 11th, 14th, 17th, 20th & 22nd POSITION OMITTED.
T5	3rd, 4th, 13rd & 14th POSITION OMITTED.
T6	2nd, 3rd, 5th, 9th, 11th, 14th, 17th, 20th & 22nd POSITION OMITTED.
T7	3rd, 4th, 6th, 9th, 13th, 15th & 16th POSITION OMITTED.
T8	2nd & 3rd POSITION OMITTED.
T9	3rd, 5th, 9th, 13th & 15th POSITION OMITTED.
U0	4th, 8th & 12th POSITION OMITTED.
U1	3rd & 5th POSITION OMITTED.
U2	3rd, 5th & 9th POSITION OMITTED.
U3	3rd, 4th, 6th, 9th & 15th POSITION OMITTED.
U4	3rd, 7th, 9th, 11th, 14th, 16th, 20th & 22nd POSITION OMITTED.
U5	3rd, 5th, 9th, 13th & 16th POSITION OMITTED.
U6	2nd, 9th, 11th, 17th, 20th, 22nd & 24th POSITION OMITTED.
U7	5th, 7th, 12th, 14th, 17th, 19th, 21st & 25th POSITION OMITTED.
U8	2nd, 5th, 8th & 10th POSITION OMITTED.
U9	4th & 8th POSITION OMITTED.
L0	3rd, 5th, 9th, 13th & 15th POSITION OMITTED.
L1	5th, 9th & 12th POSITION OMITTED.
L2	2nd, 9th, 10th, 11th, 12th, 15th & 17 POS. OMITTED.
L3	2nd, 5th & 17th POSITION OMITTED.
L4	5th, 7th, 11th, 13th, 16th, 20th & 24th POS. OMITTED.
L5	4th, 9th, 16th & 19th POS. OMITTED.
L6	4th & 9th POSITION OMITTED.
L8	5th, 7th & 15th POSITION OMITTED.
L9	12th POSITION OMITTED.

Remark:

- $\Delta$  Optional For Plating
  - 0=100u" Tin/Lead over All
  - 1=Gold Flash over All
  - 7=15u" Gold on Contact Area
  - C=3u" Gold on Contact Area
  - G=Gold Flash on Contact Area
  - E=100u" min. Tin with Lead Free
  - "RoHS COMPLAINCE"
  - F=Gold Flash with Lead Free
  - "RoHS COMPLAINCE"
  - V=15u" Gold with Lead Free
  - "RoHS COMPLAINCE"
  - U=Gold flash on Contact Area with Lead Free "RoHS COMPLAINCE"
- $\Delta$  Optional for Kinks.
  - K = The 1st, 2nd, N & N-1, 4 Pieces of terminals are kinked.
- $\Delta$  Optional for housing Color.
  - None: Standard product (color black)
  - W: color Ivory