

2.54mm (0.1") Shrouded Header (Straight & Right Angle)

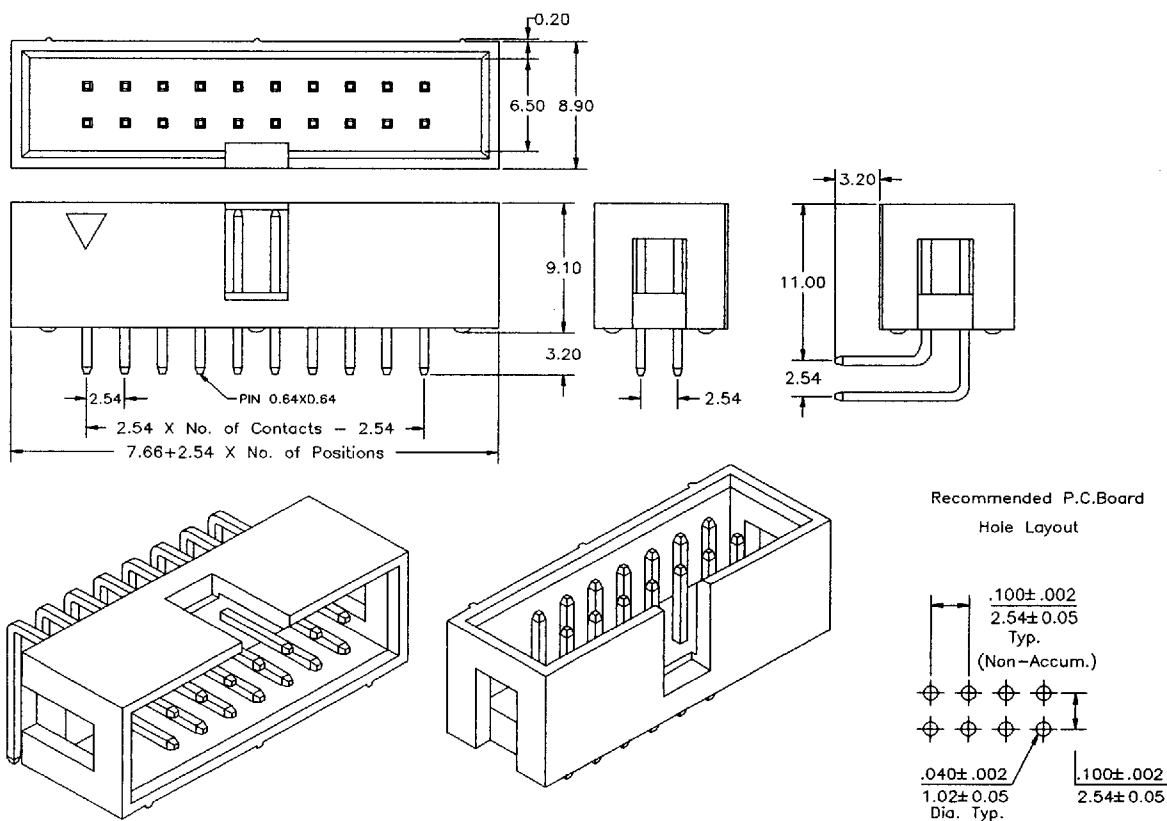
2302 Series

APPLICATION AND FEATURES

1. Assures reliable flat cable-to-P.C.Board interconnection.
2. Fully shrouded.
3. No ejector latches is for saving space.

SPECIFICATIONS

Current Rating: 1 Amps
 Insulator resistance: 5000 Megohms Min.
 Dielectric withstanding: AC 500 V
 Operating Temperature: -40°C to +105°C
 Contact Material: Brass
 Insulator Material: PBT,+30%
 Glass Fiber UL 94V-0



Order Information 2302 Series

Example: 2302-34-S-02-3.2

Series No.	Number of Contacts	Connector Type	Contact Plating	Pin Length mm
2302	08,10,14,16,20,24,26, 30,34,40,44,50,60,64	Straight <input type="checkbox"/> S Right Angle <input type="checkbox"/> R	Tin Plated <input type="checkbox"/> 01 Gold Plated <input type="checkbox"/> 02 Flash <input type="checkbox"/> 10 10 μ" <input type="checkbox"/> 10 30 μ" <input type="checkbox"/> 30	S-L <input type="checkbox"/> 3.2 R-L <input type="checkbox"/> 3.2

SINGATRON ENT. CO., LTD. Tel.: (909) 464-1883 Fax.: (909) 464-1884

9011184 000096 510