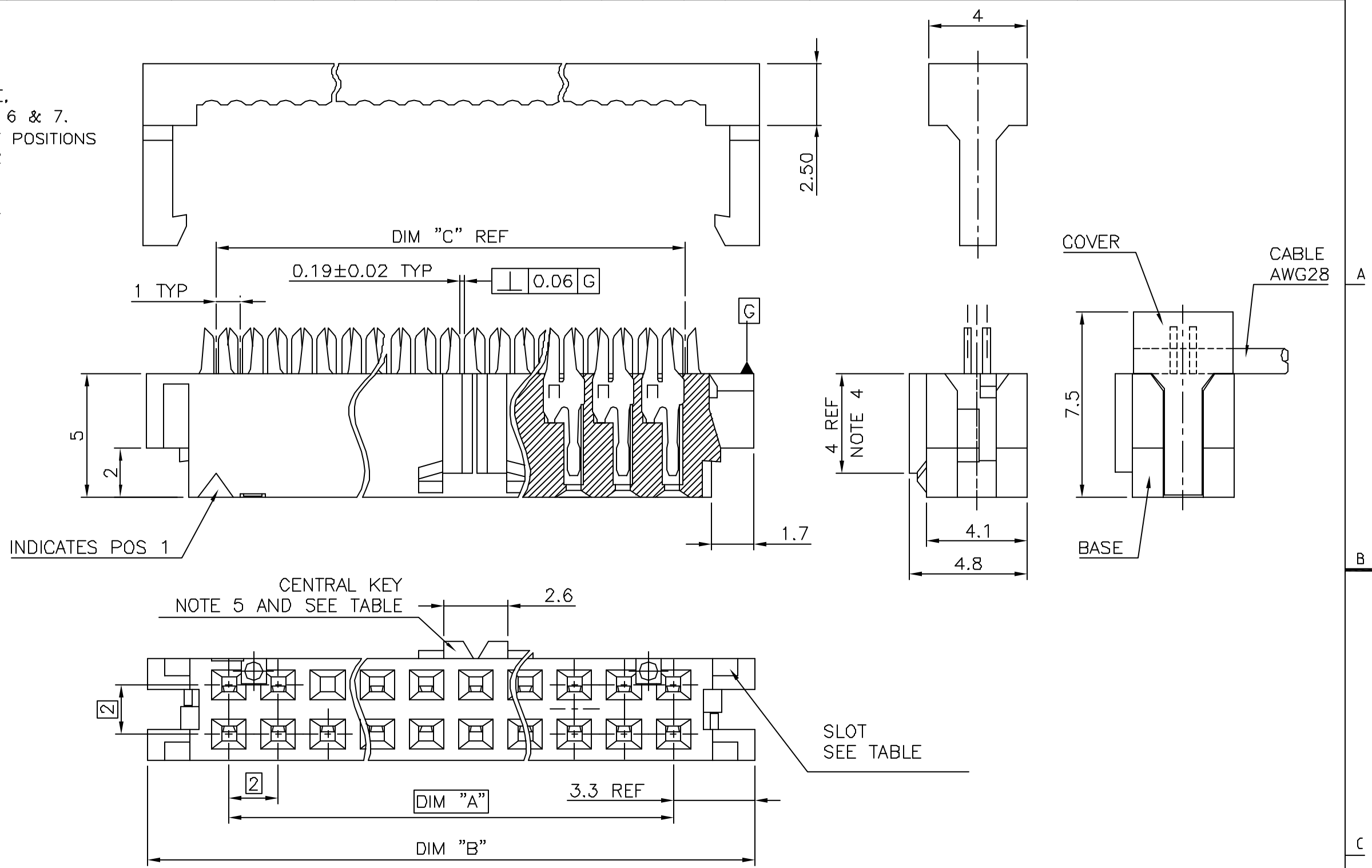


PRODUCT NUMBER

89361-YXXLF

LEAD FREE,
SEE NOTE 6 & 7.
TOTAL NB OF POSITIONS
SEE SHEET 2
FEATURES
SEE SHEET 2



FCI
FCIconnect.com

Copyright FCI

| | | | | | | | | | |
|---------------------------|----------|-----|----------|---------------------------------------|------------------------------|------------------|------------------------------|--|--|
| mat'l. code SEE NOTE 1 | | | | surface ISO 1302 ✓ | tolerance ISO 406 ISO 101 | projection mm | product family MINITEK | | |
| ltr | ecn no | dr | date | tolerances unless otherwise specified | | mm | title 2MM IDC 0.2µm Au | | |
| E | V70494 | MSC | 97.06.02 | angles | .X ±.3 | | | | |
| F | F20373 | LMU | 02.06.26 | Linear | .XX ±.13 | scale 6:1 | dwg no 89361 | | |
| G | F20586 | LMU | 03.01.27 | K ±2 | .XXX ±.05 | | | | |
| H | F05-011C | JCO | 05.01.17 | dr | L.MULIN | 02.06.26 | sheet 1 of 2 | | |
| J | F05-0418 | LMU | 06.01.03 | engr | J.COMPAGNON | 02.06.26 | size A3 | | |
| K | F06-0211 | LMU | 06.07.03 | chr | | | type CUSTOMER Drawing | | |
| sheet index | | | | revision | K | K | | | |
| | | | | sheet | 1 | 2 | | | |

| PRODUCT NUMBER | POS. | DIM "A" | DIM "B" | DIM "C" |
|----------------|-------|---------|---------|---------|
| | 2x 1 | | | |
| | 2x 2 | | | |
| 89361-X06 | 2x 3 | 4 | 10.6 | 5 |
| 89361-X08 | 2x 4 | 6 | 12.6 | 7 |
| 89361-X10 | 2x 5 | 8 | 14.6 | 9 |
| 89361-X12 | 2x 6 | 10 | 16.6 | 11 |
| 89361-X14 | 2x 7 | 12 | 18.6 | 13 |
| 89361-X16 | 2x 8 | 14 | 20.6 | 15 |
| 89361-X18 | 2x 9 | 16 | 22.6 | 17 |
| 89361-X20 | 2x 10 | 18 | 24.6 | 19 |
| 89361-X22 | 2x 11 | 20 | 26.6 | 21 |
| 89361-X24 | 2x 12 | 22 | 28.6 | 23 |
| 89361-X26 | 2x 13 | 24 | 30.6 | 25 |
| 89361-X28 | 2x 14 | 26 | 32.6 | 27 |
| 89361-X30 | 2x 15 | 28 | 34.6 | 29 |
| | 2x 16 | | | |
| 89361-X34 | 2x 17 | 32 | 38.6 | 33 |
| 89361-X36 | 2x 18 | 34 | 40.6 | 35 |
| | 2x 19 | | | |
| 89361-X40 | 2x 20 | 38 | 44.6 | 39 |
| | 2x 21 | | | |
| 89361-X44 | 2x 22 | 42 | 48.6 | 43 |
| | 2x 23 | | | |
| 89361-X48 | 2x 24 | 46 | 52.6 | 47 |
| 89361-X50 | 2x 25 | 48 | 54.6 | 49 |

NOTES :

- 1 - MATERIAL : TERMINAL PHOSPHOR BRONZE
BASE AND COVER G.F.PBT.UL94V-O.BLACK
- 2 - PLATING : GOLD 0.2µm Au MIN. ON CONTACT AREA
NICKEL 1.27µm MIN UNDERPLATING ALL OVER
- 3 - RECOMMENDED CABLE SIZE : AWG28, STRANDED
- 4 - FRICTION LATCH BUMPS SIZE 2X3 AND 2X4 DO NOT HAVE TRIANGLE SHOWING POS#1.
- 5 - KEY WIDTH AND THICKNESS ARE REDUCED ON 2x3 SIZE CONNECTOR. (WIDTH=2.0, THICKNESS=4.6).
- 6 - 89361-XXXLF IS SIMILAR TO 89361-XXX, THE SUFFIX 'LF' IS ADDED FOR LEAD FREE IDENTIFICATION.
- 7 - THIS PRODUCT MEETS EUROPEAN UNION DIRECTIVES AND OTHER COUNTRY REGULATIONS AS PER GS-22-008.
PACKAGING SPECIFICATION AS PER GS-14-920.

| PRODUCT CODE | WITHOUT KEY | | SLOT | WITH FRICTION LATCH BUMPS | |
|--------------|-------------|-----|------|---------------------------|------|
| | CENTRAL | KEY | | WITHOUT | WITH |
| 89361-7XX | | | | | |
| 89361-3XX | | | | | |
| 89361-1XX | | | | | |

| | | | | | | | | | |
|-------------|----------|----------------|----------|---------------------------------------|----------------------|------------|--|-----------------------|--|
| mat'l. code | | surface | | tolerance | | projection | | product family | |
| SEE NOTE 1 | | ISO 1302 ✓ | | ISO 406 ISO 101 | | | | MINITEK | |
| ltr | ecn no | dr | date | tolerances unless otherwise specified | | mm | | title | |
| E | V70494 | MSC | 97.06.02 | angles | .X ±.3 | mm | | 2MM IDC | |
| F | F20373 | LMU | 02.06.26 | Linear | .XX ±.13 | | | 0.2µm Au | |
| G | F20586 | LMU | 03.01.27 | K ±2 | .XXX ±.05 | scale 6:1 | | dwg no | |
| H | F05-0110 | JCO | 05.01.17 | dr | L.MULIN 02.06.26 | | | sheet 2 of - size | |
| J | F05-0418 | LMU | 06.01.03 | engr | J.COMPAGNON 02.06.26 | | | 89361 A3 | |
| K | F06-0211 | LMU | 06.07.03 | chr | | | | type CUSTOMER Drawing | |
| sheet index | | revision sheet | | appd JM.C 02.06.26 | | | | | |