

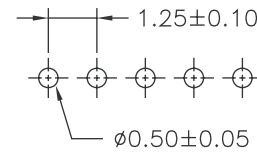
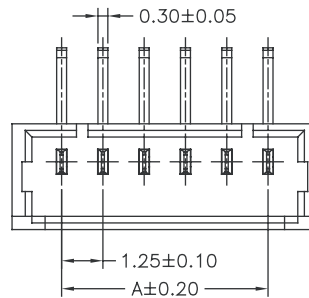
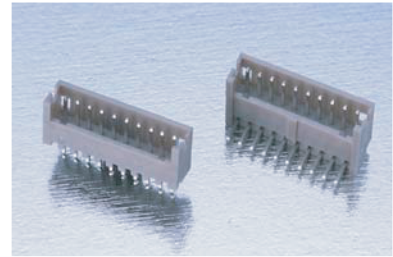


## 1.25mm WAFER RIGHT ANGLE / STRAIGHT TYPE

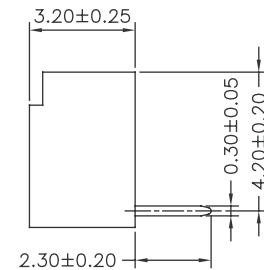
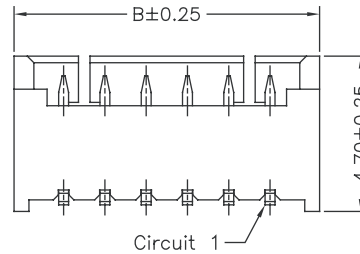
### SPECIFICATIONS

Current Rating: 1A AC,DC  
Voltage Rating: 100V AC,DC  
Temperature Range:  $-25^{\circ}\text{C} \sim +85^{\circ}\text{C}$   
Contact Resistance:  $20\text{m}\Omega$  Max.  
Insulation Resistance:  $100\text{M}\Omega$  Min.  
Withstanding Voltage: 500V AC/minute  
Pin Material: Phosphor Bronze/Tin-plated  
Material: Nylon 6T,UL94V-0  
Color: Natural(Beige)

PART NO.	Dimensions	
	A	B
1250R-02TW-U	1.25	4.25
1250R-03TW-U	2.50	5.50
1250R-04TW-U	3.75	6.75
1250R-05TW-U	5.00	8.00
1250R-06TW-U	6.25	9.25
1250R-07TW-U	7.50	10.50
1250R-08TW-U	8.75	11.75
1250R-09TW-U	10.00	13.00
1250R-10TW-U	11.25	14.25
1250R-11TW-U	12.50	15.50
1250R-12TW-U	13.75	16.75
1250R-13TW-U	15.00	18.00
1250R-14TW-U	16.25	19.25
1250R-15TW-U	17.50	20.50
1250R-16TW-U	18.75	21.75
1250R-17TW-U	20.00	23.00
1250R-18TW-U	21.25	24.25



P.C.B LAYOUT

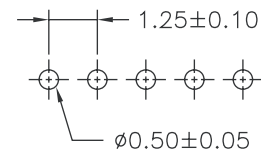
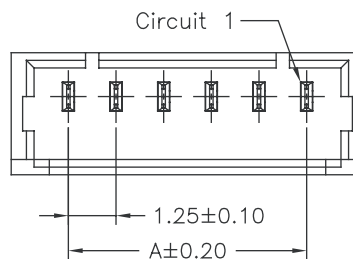


### Part No.:1250R-XXTW-U

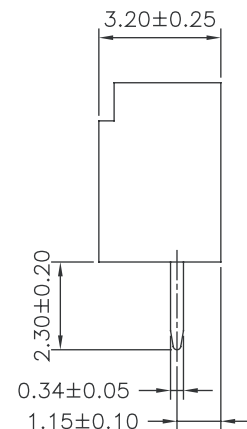
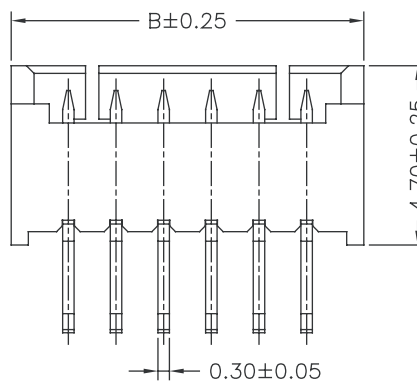
### SPECIFICATIONS

Current Rating: 1A AC,DC  
Voltage Rating: 100V AC,DC  
Temperature Range:  $-25^{\circ}\text{C} \sim +85^{\circ}\text{C}$   
Contact Resistance:  $20\text{m}\Omega$  Max.  
Insulation Resistance:  $100\text{M}\Omega$  Min.  
Withstanding Voltage: 500V AC/minute  
Pin Material: Phosphor Bronze/Tin-plated  
Material: Nylon 6T,UL94V-0  
Color: Natural(Beige)

PART NO.	Dimensions	
	A	B
1250S-02TW-U	1.25	4.25
1250S-03TW-U	2.50	5.50
1250S-04TW-U	3.75	6.75
1250S-05TW-U	5.00	8.00
1250S-06TW-U	6.25	9.25
1250S-07TW-U	7.50	10.50
1250S-08TW-U	8.75	11.75
1250S-09TW-U	10.00	13.00
1250S-10TW-U	11.25	14.25
1250S-11TW-U	12.50	15.50
1250S-12TW-U	13.75	16.75
1250S-13TW-U	15.00	18.00
1250S-14TW-U	16.25	19.25
1250S-15TW-U	17.50	20.50
1250S-16TW-U	18.75	21.75
1250S-17TW-U	20.00	23.00
1250S-18TW-U	21.25	24.25



P.C.B LAYOUT



### Part No.:1250S-XXTW-U