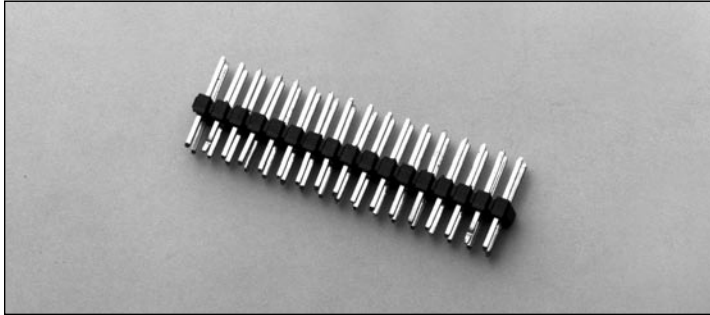


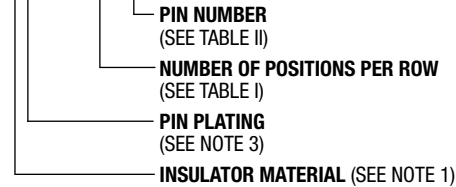
.100" (2.54mm) Dual Row, Through Hole, Vertical Header with Retention Tails



9100 SERIES ("POST/BOXE")

PART NUMBER LEGEND

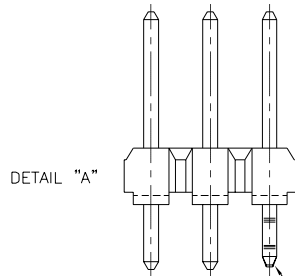
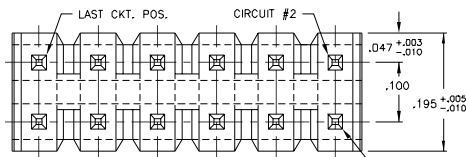
91XX-31-2XX-XX



MATING CONNECTORS: 9000 SERIES

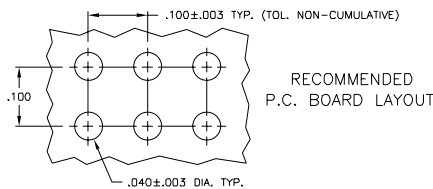
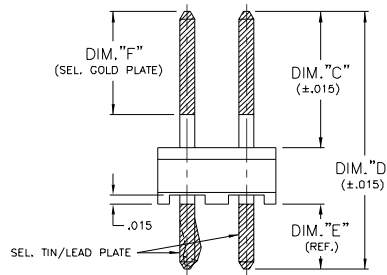
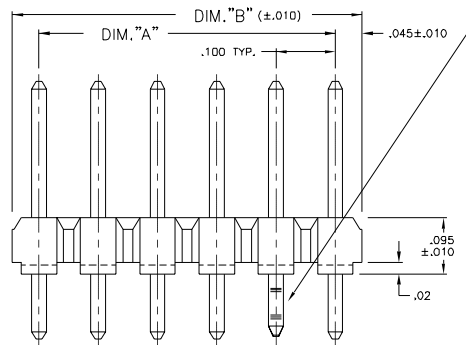
NOTES:

- INSULATOR MATERIAL: 910X - GLASS FILLED POLYESTER (PET); UL 94V-0; COLOR: BLACK
911X - GLASS FILLED POLYESTER (PCT); UL 94V-0; COLOR: BLACK
- PIN MATERIAL: PHOSPHOR BRONZE.
- PIN FINISH: 9100 - TIN/LEAD OVER NICKEL PLATE;
9102 - GOLD (.000015 THICK) OVER NICKEL PLATE (.000030 THICK);
910B - SEL. GOLD (.000030 THICK) AND SEL. 90/10 TIN/LEAD (.0001/.0002 THICK) WITH NICKEL UNDERPLATE OVERALL (.000050 THICK);
910E - SEL. GOLD (.000015 THICK) AND SEL. 90/10 TIN/LEAD (.0001/.0002 THICK) WITH NICKEL UNDERPLATE OVERALL (.000050 THICK).



RETENTION TAIL TO BE FORMED AT POS. #1. TYPICAL FOR 2 & 4 POS. ASSEMBLIES; SEE TABLE I FOR 2ND FORMED TAIL LOCATION

1ST RETENTION TAIL TO BE FORMED AT POS. #3, TYPICAL FOR 5-THRU-80 POS. ASS'Y.; SEE TABLE I FOR 2ND & 3RD FORMED TAIL LOCATIONS; SEE DETAIL "A" FOR TAIL FORM CONFIGURATION FOR 2, 3 AND 4 POS. ASS'Y.



PART No.	DIM "C"	DIM "D"	DIM "E"	DIM "F"
910X-31-2XX-01	.230	.435	.110	.160
910X-31-2XX-02	.320	.525	.110	.200
910X-31-2XX-03	.820	1.030	.115	.200
910X-31-2XX-04	.585	.785	.105	.200

PART No.	No. OF POS.	DIM "A"	DIM "B"	2ND TAIL POS.	3RD TAIL POS.
910X-31-201-XX	2	---	.090	---	---
-202-	4	.100	.190	3	---
-203-	6	.200	.290	5	---
-204-	8	.300	.390	7	---
-205-	10	.400	.490	7	---
-206-	12	.500	.590	9	---
-207-	14	.600	.690	11	---
-208-	16	.700	.790	13	---
-209-	18	.800	.890	15	---
-210-	20	.900	.990	17	---
-211-	22	1.000	1.090	19	---
-212-	24	1.100	1.190	21	---
-213-	26	1.200	1.290	23	---
-214-	28	1.300	1.390	25	---
-215-	30	1.400	1.490	27	---
-216-	32	1.500	1.590	29	---
-217-	34	1.600	1.690	31	---
-218-	36	1.700	1.790	33	---
-219-	38	1.800	1.890	35	---
-220-	40	1.900	1.990	37	---
-221-	42	2.000	2.090	39	21
-222-	44	2.100	2.190	41	21
-223-	46	2.200	2.290	43	23
-224-	48	2.300	2.390	45	23
-225-	50	2.400	2.490	47	25
-226-	52	2.500	2.590	49	25
-227-	54	2.600	2.690	51	27
-228-	56	2.700	2.790	53	27
-229-	58	2.800	2.890	55	29
-230-	60	2.900	2.990	57	29
-231-	62	3.000	3.090	59	31
-232-	64	3.100	3.190	61	31
-233-	66	3.200	3.290	63	33
-234-	68	3.300	3.390	65	33
-235-	70	3.400	3.490	67	35
-236-	72	3.500	3.590	69	35
-237-	74	3.600	3.690	71	37
-238-	76	3.700	3.790	73	37
-239-	78	3.800	3.890	75	39
910X-31-240-XX	80	3.900	3.990	77	39



North and South America:
Methode Electronics, Inc. Connector Products
 1700 Hicks Road • Rolling Meadows, IL 60008 USA
 847-392-3500 • Toll Free: 800-323-6864 • Fax: 847-392-9404
 Email: info@methode.com • Web: www.methode.com/connector/index.html

Europe:
Methode Electronics Ireland, Ltd.
 Unit H, Crossagalla Business Park, Ballysimon Rd. • Limerick, Ireland
 +353 (0) 61 401222 • Fax: +353 (0) 61 401942
 Email: info@methode.ie • Web: ireland.methode.com/main.html

Far East:
Methode Electronics Far East, Pte. Ltd.
 1 Tuas Lane, Jurong Town • Singapore 638610
 65-68615444 • Fax: 65-68614777
 Email: sales@methode.com.sg • Web: www.methode.com/mefe/index.html