

Rochester Electronics Manufactured Components

Rochester branded components are manufactured using either die/wafers purchased from the original suppliers or Rochester wafers recreated from the original IP. All recreations are done with the approval of the OCM.

Parts are tested using original factory test programs or Rochester developed test solutions to guarantee product meets or exceed the OCM data sheet.

Quality Overview

- ISO-9001
- AS9120 certification
- Qualified Manufacturers List (QML) MIL-PRF-35835
 - Class Q Military
 - Class V Space Level
- Qualified Suppliers List of Distributors (QSLD)
 - Rochester is a critical supplier to DLA and meets all industry and DLA standards.

Rochester Electronics, LLC is committed to supplying products that satisfy customer expectations for quality and are equal to those originally supplied by industry manufacturers.

The original manufacturer's datasheet accompanying this document reflects the performance and specifications of the Rochester manufactured version of this device. Rochester Electronics guarantees the performance of its semiconductor products to the original OEM specifications. 'Typical' values are for reference purposes only. Certain minimum or maximum ratings may be based on product characterization, design, simulation, or sample testing.

74 Series TTL *See outline drawings Nos. 109, 111 or 114 (as applicable for 14 pin, 16 pin package etc.) for physical dimensions.*

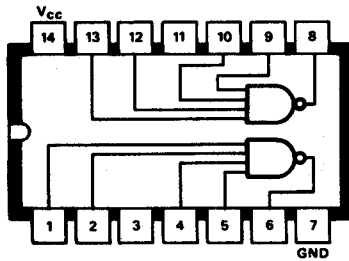
REFERENCE TABLE Code	Function	Stock No.	Connection Diagram No.
DM7427N	Triple 3 NOR Gate	33005X	B24
DM7430N	Eight Input NAND Gate	19603A	B26
DM7432N	Quad 2 OR Gate	29347B	B27
DM7437N	Quad 2 NAND Buffer	33006R	B29
DM7438N	Quad 2 NAND Buffer (Open Collector)	33007G	B30
DM7440N	Dual 4 NAND Buffer	19604X	B31
DM7441AN	Nixie Driver	19632B	B32
DM7442N	BCD To Decimal Decoder	19633X	B33
DM7445N	BCD To Decimal Decoder/Driver	29350A	B36
DM7446N	BCD To 7-Segment Decoder Driver	29351X	B37
DM7446AN	40MA Version of DM7446N	33008E	B37
DM7447N	BCD To 7-Segment Decoder Driver	29390G	B38
DM7447AN	40MA Version of DM7447N	33009C	B38
DM7448N	BCD To 7-Segment Decoder/Driver	29352H	B39
DM7450N	EXP Dual 2-Input AND-OR-INVERT Gate	19635G	B40
DM7451N	Dual 2-Input AND-OR-INVERT Gate	19605H	B41
DM7453N	EXP 2-Input AND-OR-INVERT Gate	19606F	B43
DM7454N	2-Input AND-OR-INVERT Gate	19607D	B44
DM7460N	Dual 4-Input Expander	19609X	B46
DM7470N	J.K. Flip-Flop	33010F	B51
DM7472N	J.K. Flip-Flop (Master/Slave)	19634R	B53
DM7473N	Dual J.K. Flip-Flop (Master/Slave)	19616B	B54
DM7474N	Dual J.K. Flip-Flop	19615D	B55
DM7475N	Quad Latch	19621H	B56
DM7476N	Dual K.J. Flip-Flop (Master/Slave)	19614F	B57
DM7483N	4-Bit Adder	19613H	B62
DM7485N	4-BIT Comparator	33011D	B64
DM7486N	Quad Exclusive OR Gate	19608B	B65
DM7489N	64-BIT RAM	29360H	B67
DM7490N	Decade Counter	19618R	B68
DM7491AN	8-BIT Shift Register	29356X	B69
DM7492N	Divide-By-Twelve Counter	19619G	B70
DM7493N	4-BIT Binary Counter	19620X	B71
DM7495N	4-Bit Right-Shift Left-Shift Register	19625X	B73
DM7496N	5-BIT Parallel-In Parallel-Out Shift Register	29357R	B74
DM7497N	Binary Rate Multiplier	33012B	B75
DM74107N	Dual J-K Flip-Flop	29348X	B80
DM74121N	One Shot Multivibrator	29349R	B87
DM74123N	Dual One Shot Multivibrator	33013X	B89
DM74125N	TRI-STATE Buffer	30533X	B91
DM74126N	TRI-STATE Buffer	30610F	B92
DM74141N	Nixie Driver	31004A	B100

MANUFACTURER'S CURRENT LIST PRICES ARE ALWAYS CHARGED

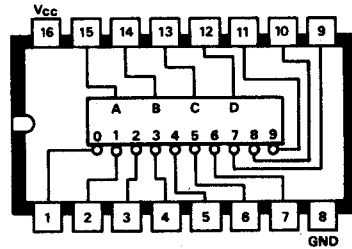
Semiconductors

Connection Diagrams

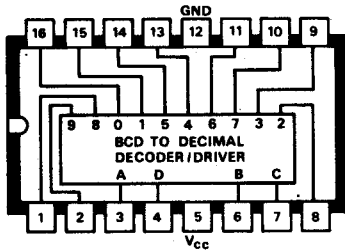
**B31 SN7440N
SN74H40N/SN74S40N
Dual 4-input NAND Buffer**



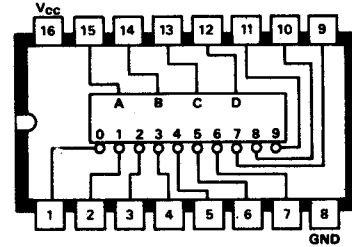
**B34 SN7443N
Excess-3-to-Decimal decoder**



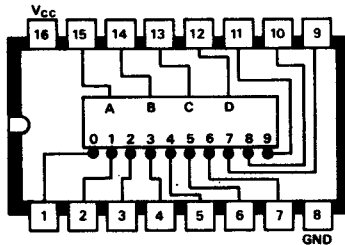
**B32 SN7441AN
BCD-to-Decimal decoder driver**



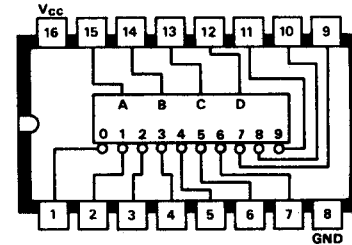
**B35 SN7444N
Excess-3-gray-to-Decimal decoder**



**B33 SN7442N
SN74L42AN/SN74C42N
BCD-to-Decimal decoder**



**B36 SN7445N
BCD-to-Decimal decoder driver
with open collector output**



MANUFACTURER'S CURRENT LIST PRICES ARE ALWAYS CHARGED