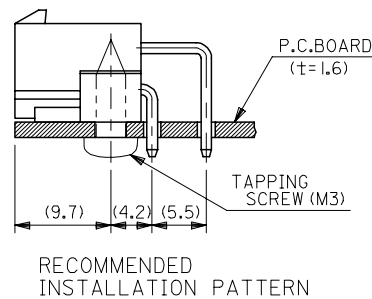
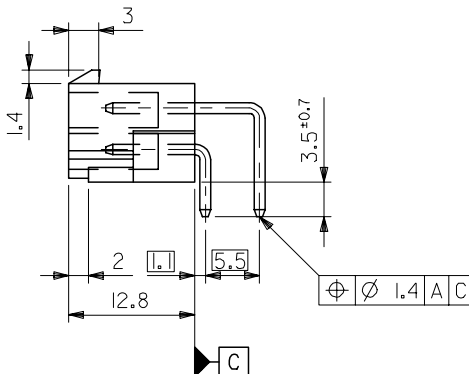
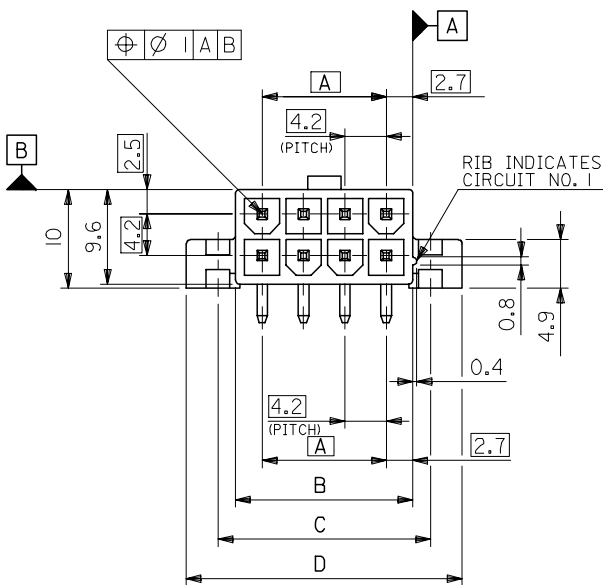


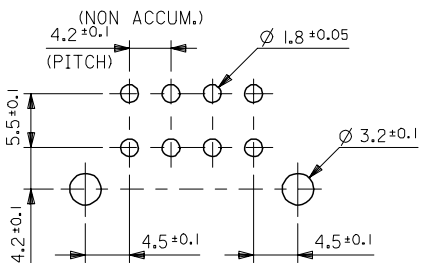
**NOTES**

1. MATES WITH : 5557 SERIES
- △ IN CASE OF 2 CIRCUITS HEADER, THIS DIMENSION SHOULD BE 4.2mm.
3. MATERIAL & FINISH

ENG. NO.	HEADER MATERIAL	PIN MATERIAL	FINISH OF PIN
5569-NAIGS	NYLON 66, UL94V-2	BRASS (1.07 SQUARE)	GOLD 0.76 µm MIN. AND TIN 2.54 µm MIN. OVER NICKEL 1.27 µm MIN.
▲ -NAIGS-210	NYLON 66, UL94V-0		GOLD 0.38 µm MIN. AND TIN 1.91µm MIN. OVER NICKEL 1.27 µm MIN.
▼ -NAIGS2	NYLON 66, UL94V-2		
▼ -NAIGS2-210	NYLON 66, UL94V-0		GOLD 1.27 µm MIN. AND TIN 1.91µm MIN.
▼ -NAIGS3	NYLON 66, UL94V-2		
5569-NAIGS3-210	NYLON 66, UL94V-0	GOLD 1.27 µm MIN. AND TIN 1.91µm MIN. OVER NICKEL 1.27 µm MIN.	

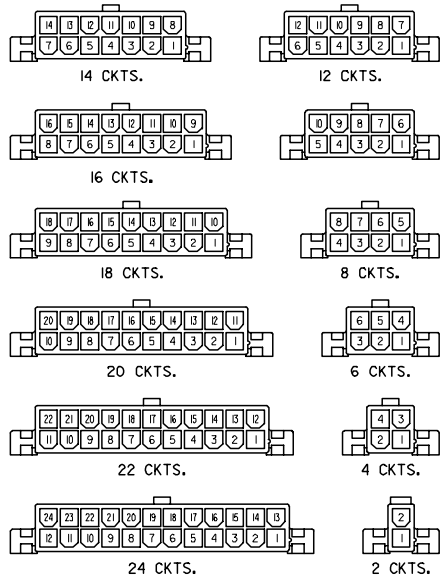


61.6	55.2	51.6	46.2	24
57.4	51	47.4	42	22
53.2	46.8	43.2	37.8	20
49	42.6	39	33.6	18
44.8	38.4	34.8	29.4	16
40.6	34.2	30.6	25.2	14
36.4	30	26.4	21	12
32.2	25.8	22.2	16.8	10
28	21.6	18	12.6	8
23.8	17.4	13.8	8.4	6
19.6	13.2	9.6	4.2	4
15.4	9	5.4	—	2
D	C	B	A	NO. OF CKTS.



RECOMMENDED P.C. BOARD PATTERN

REVISED EC NO: J2006-0562 DRW: TAKEMOTO 2005/08/19 CHKD: TANAKA 2005/08/22 APPR: NUKITA 2005/08/30	GENERAL TOLERANCES (UNLESS SPECIFIED)		DIMENSION STYLE MM ONLY	SCALE 2:1	DESIGN UNITS METRIC	THIRD ANGLE PROJECTION
	DESCRIPTION	10 UNDER ±0.4	10 OVER 30 UNDER ±0.3	DRAWN BY TNIITSU 1998/01/20	DATE	TITLE NEW MINI FIT CONN. RIGHT ANGLE HEADER ASS'Y WITH FLANGE
REV A	30 OVER ±0.2	ANGULAR ±3 °	CHECKED BY SKUNISHI 1998/01/21	DATE	MOLEX INCORPORATED	
	DRAFT WHERE APPLICABLE MUST REMAIN WITHIN DIMENSIONS		APPROVED BY MFUKUSHIMA 1998/01/21	DATE	MATERIAL NO. SEE SHEET 2 OF 2	DOCUMENT NO. SD-5569-NA1GS*-*
	SIZE A3		THIS DRAWING CONTAINS INFORMATION THAT IS PROPRIETARY TO MOLEX INCORPORATED AND SHOULD NOT BE USED WITHOUT WRITTEN PERMISSION		SHEET NO. 1 OF 2	



CIRCUIT SIZE LAYOUT  
(SCALE : 1-1)

				39-34-7241	5569-24A1GS-210	24
				39-34-7221	5569-22A1GS-210	22
				39-34-7201	5569-20A1GS-210	20
				39-34-7181	5569-18A1GS-210	18
				39-34-7161	5569-16A1GS-210	16
				39-34-7141	5569-14A1GS-210	14
				39-34-7121	5569-12A1GS-210	12
				39-34-7101	5569-10A1GS-210	10
				39-34-7081	5569-08A1GS-210	8
				39-34-7061	5569-06A1GS-210	6
39-34-7045	5569-04A1GS3-210	39-34-7043	5569-04A1GS2-210	39-34-7041	5569-04A1GS-210	4
39-34-7025	5569-02A1GS3-210	39-34-7023	5569-02A1GS2-210	39-34-7021	5569-02A1GS-210	2
EDP NO.	ENG. NO.	EDP NO.	ENG. NO.	EDP NO.	ENG. NO.	CKT. SIZE
5569-NA IGS3-210		5569-NA IGS2-210		5569-NA IGS-210		
				39-34-7240	5569-24A1GS	24
				39-34-7220	5569-22A1GS	22
				39-34-7200	5569-20A1GS	20
				39-34-7180	5569-18A1GS	18
				39-34-7160	5569-16A1GS	16
				39-34-7140	5569-14A1GS	14
				39-34-7120	5569-12A1GS	12
				39-34-7100	5569-10A1GS	10
				39-34-7080	5569-08A1GS	8
				39-34-7060	5569-06A1GS	6
39-34-7044	5569-04A1GS3	39-34-7042	5569-04A1GS2	39-34-7040	5569-04A1GS	4
39-34-7024	5569-02A1GS3	39-34-7022	5569-02A1GS2	39-34-7020	5569-02A1GS	2
EDP NO.	ENG. NO.	EDP NO.	ENG. NO.	EDP NO.	ENG. NO.	CKT. SIZE
5569-NA IGS3		5569-NA IGS2		5569-NA IGS		

REVISED EC NO: J2006-0562 DRWN: TAKEMOTO 2005/08/19 CHKD: MIYANAKA 2005/08/22 APPR: NUKITA 2005/08/30	GENERAL TOLERANCES (UNLESS SPECIFIED)		DIMENSION STYLE MM ONLY		SCALE ---	DESIGN UNITS METRIC	THIRD ANGLE PROJECTION	
	10 UNDER	± ---	DRAWN BY TNIITSU		DATE 1998/01/20	TITLE NEW MINI FIT CONN. RIGHT ANGLE HEADER ASS'Y WITH FLANGE  MOLEX INCORPORATED		
	10 OVER	30 UNDER	± ---	CHECKED BY SKUNISHI				DATE 1998/01/21
	30 OVER	± ---	APPROVED BY MFUKUSHIMA		DATE 1998/01/21			
	ANGULAR		± --- °	MATERIAL NO.		DOCUMENT NO.	SHEET NO.	
DRAFT WHERE APPLICABLE MUST REMAIN WITHIN DIMENSIONS			SIZE A3		SEE CHART	SD-5569-NA1GS*-*	2 OF 2	

THIS DRAWING CONTAINS INFORMATION THAT IS PROPRIETARY TO MOLEX INCORPORATED AND SHOULD NOT BE USED WITHOUT WRITTEN PERMISSION