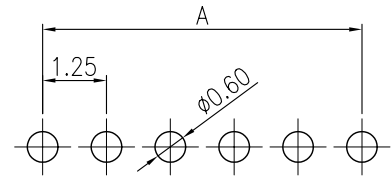
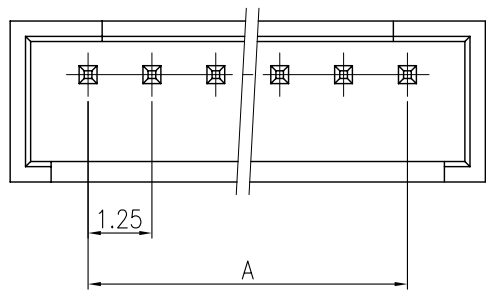


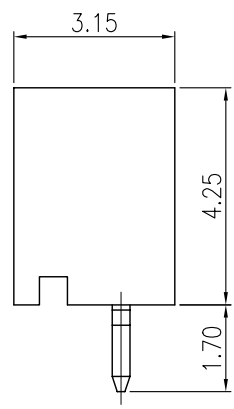
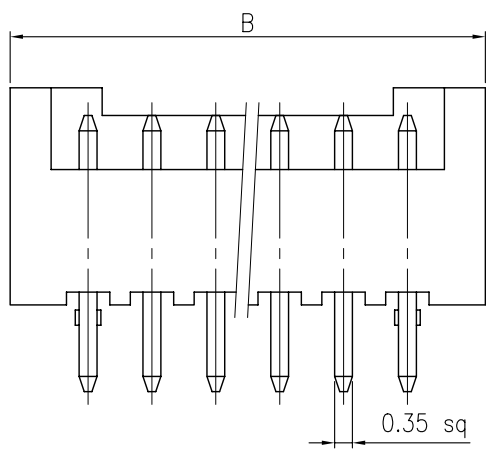
V1.1

REVISIONS							
SYM	DISCRPTION	DATE	APPROVED	SYM	DISCRPTION	DATE	APPROVED
△				△			
△				△			

**\*\*CUSTOMER DRAWING FOR REFERENCE ONLY, SAMPLES APPROVAL ARE REQUIRED!!**



P.C.B. LAYOUT



PART NO.	CONTACTS	DIMENSIONS		PCS/BOX
		A	B	
MCu005-P02T	1X2	1.25	4.30	1,000
MCu005-P03T	1X3	2.50	5.55	1,000
MCu005-P04T	1X4	3.75	6.80	1,000
MCu005-P05T	1X5	5.00	8.05	1,000
MCu005-P06T	1X6	6.25	9.30	1,000
MCu005-P07T	1X7	7.50	10.55	1,000
MCu005-P08T	1X8	8.75	11.80	1,000
MCu005-P09T	1X9	10.00	13.05	1,000
MCu005-P10T	1X10	11.25	14.30	1,000
MCu005-P11T	1X11	12.50	15.55	1,000
MCu005-P12T	1X12	13.75	16.80	1,000
MCu005-P13T	1X13	15.00	18.05	1,000
MCu005-P14T	1X14	16.25	19.30	1,000
MCu005-P15T	1X15	17.50	20.55	1,000

**SPECIFICATIONS**  
 CURRENT RATING: 1A AC, DC  
 VOLTAGE RATING: 100V AC, DC  
 TEMPERATURE RANGE: -25°C ~ +85°C  
 CONTACT RESISTANCE: 20MΩ MAX.  
 INSULATION RESISTANCE: 500MΩ MIN.  
 WITHSTAND VOLTAGE : 500V AC/MINUTE  
 PIN MATERIAL: BRASS/TIN-PLATED  
 WAFER: NYLON 66, UL94V-0

**ORDER INFORMATION:**  
 MC005-PXXT  
 MC: WAFER SERIES, WAFER  
 u: PITCH: 1.25 mm  
 005: SERIES NO.  
 P: PCB TYPE, STRAIGHT TYPE  
 XX: NO. OF CONTACTS  
 T: PLATING, TIN PLATING

MATING			HOUSING	MCu005-XX-H	TERMINAL	MCu005-T
TOLERANCES UNLESS OTHERWISE SPECIFIED ±0.30			SIGNATURES		DATE	MODEL
			DRAWN	KENNY	22/AUG/03'	TITLE
SYMBOL △			UNIT	SCALE	NO.	MCu005-P__T
			mm	10/1		
			APPROVALS			
<b>MMT CORPORATION</b>						