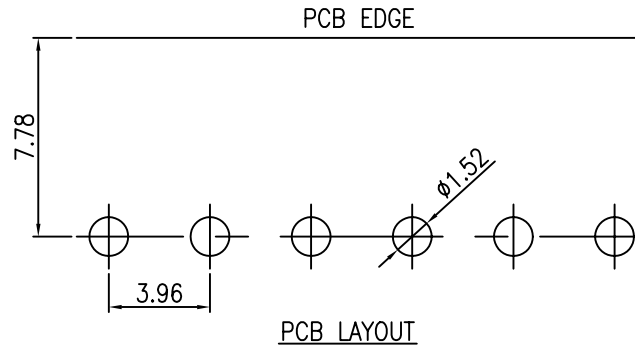
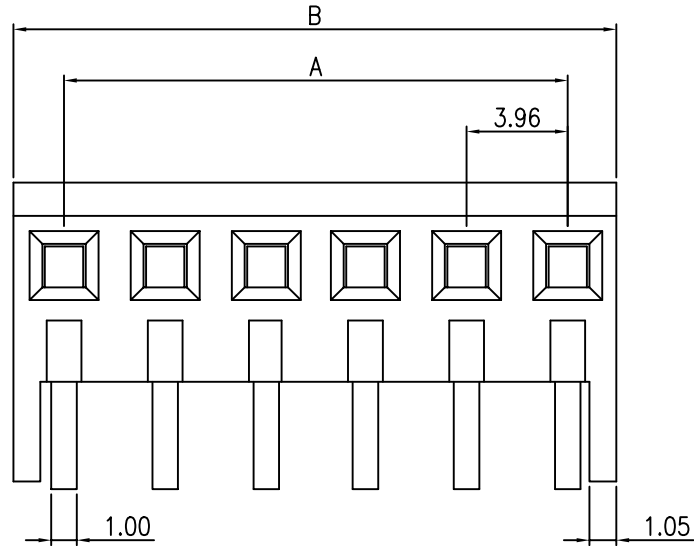


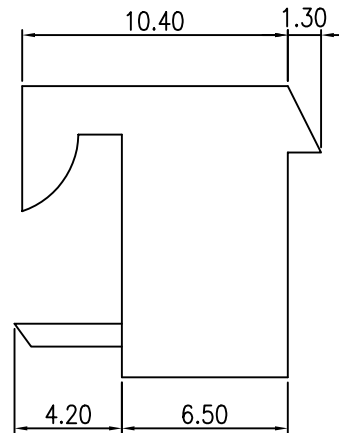
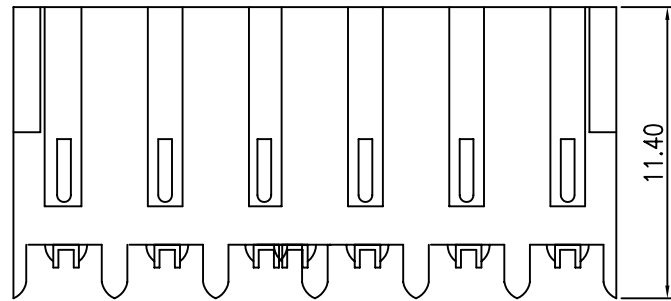
V1.1

REVISIONS							
SYM	DISCRIPTION	DATE	APPROVED	SYM	DISCRIPTION	DATE	APPROVED
△				△			
△				△			

****CUSTOMER DRAWING FOR REFERENCE ONLY, SAMPLES APPROVAL ARE REQUIRED!!**



MODEL NO.	DIMENSION	
	A	B
MCr002-Pa02G15t	3.96	7.82
MCr002-Pa03G15t	7.92	11.78
MCr002-Pa04G15t	11.88	15.74
MCr002-Pa05G15t	15.84	19.70
MCr002-Pa06G15t	19.80	23.66
MCr002-Pa07G15t	23.76	27.62
MCr002-Pa08G15t	27.72	31.58
MCr002-Pa09G15t	31.68	33.54
MCr002-Pa10G15t	35.64	39.50
MCr002-Pa11G15t	39.60	43.46
MCr002-Pa12G15t	43.56	47.42
MCr002-Pa13G15t	47.52	51.38
MCr002-Pa14G15t	51.48	55.34
MCr002-Pa15G15t	55.44	59.30
MCr002-Pa16G15t	59.40	63.26
MCr002-Pa17G15t	63.36	67.22
MCr002-Pa18G15t	67.32	71.18
MCr002-Pa19G15t	71.28	75.14
MCr002-Pa20G15t	75.24	79.10
MCr002-Pa21G15t	79.20	83.06
MCr002-Pa22G15t	83.16	87.02
MCr002-Pa23G15t	87.12	90.98
MCr002-Pa24G15t	91.08	94.94
MCr002-Pa25G15t	95.04	98.90



FEATURES :

HOUSING UL 94V-0 NYLON 6/6,
 MATES WITH 1.14mm SQUARE PINS
SPECIFICATIONS
 CURRENT RATING : 7A AC .DC
 VOLTAGE RATING : 250V AC MAX.
 TEMPERATUR RANGE : -40°C~+105°C
 CONTACT RESISTANCE : INITIAL VALUE/10mΩ MAX.
 AFTER ENVIRONMENTAL TESTING/20mΩ MAX.
 INSULATION RESISTANCE : 500MΩ MIN.
 WITHSTAND VOLTAGE : 1500V AC / MINUTE
 APPLICABLE PC BOARD THICKNESS : 1.6mm

ORDER INFORMATION:

MCr002-PaXXG15t
 MC: WAFER
 r: PITCH = 3.96mm
 002: SERIES NO.
 Pa: PCB TYPE, RIGHT ANGLE
 XX: NO. OF CONTACTS
 G15t: 15 u" GOLD ON CONTACT,
 TIN PLATING ON SOLDER TAIL

MATING			1.14 SQUARE PINS			
TOLERANCES UNLESS OTHERWISE SPECIFIED ±0.30			SIGNATURES		DATE	MODEL
			DRAWN	VIVI	26/NOV/02'	TITLE
SYMBOL △			CHECKED		DATE	NO.
			ZOLA		26/NOV/02'	MCr002-Pa__G15t
APPROVALS						
MMT CORPORATION						