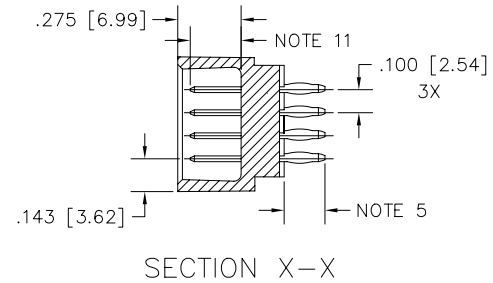
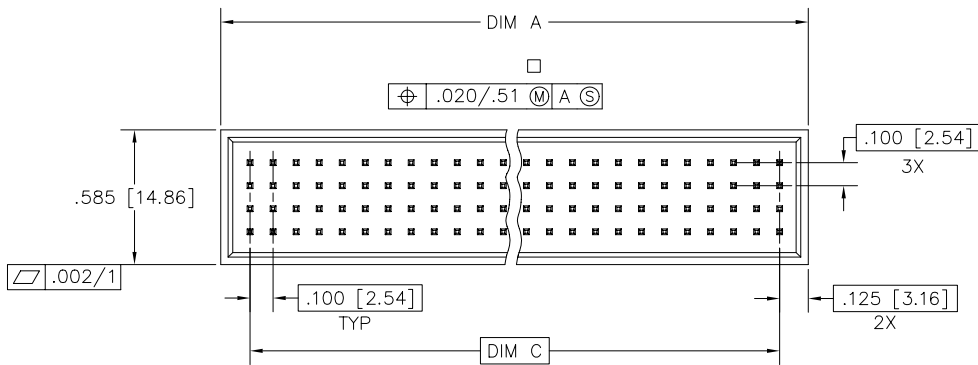
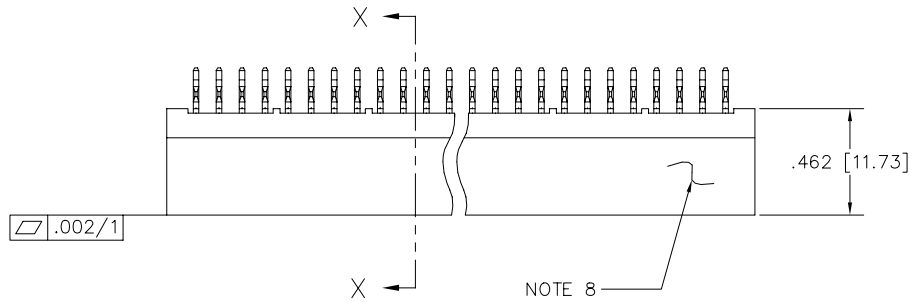


PRODUCT NUMBER
SEE NOTE 2



mat'l. code NOTE 3		surface ISO 1302 ✓		tolerance ISO 406 ISO 1101		projection INCH/MM		product family HPC	
tolerances unless otherwise specified		angles		linear		scale 1:1		title 4 ROW VERTICAL HEADER CARD CONN STYLE, PRESS FIT	
A	v11962	RDS	8/02/91		.xx ±.01/.3			dwg no 50355	
B	v12628	RDS	8/02/91		.xxx ±.005/.13			sheet 1 of 2 size A3	
C	V30263	JM	2/22/93	σ±2'	.xxxx ±.0020/.051			type Product Customer Drawing	
D	v90651	HTB	4/08/99	dr	S. SHEAFFER	1/16/91			
E	v00278	JWS	2/04/00	enfr	S. CLARK	8/02/91			
F	M06-0261	MNR	7/10/06	chr	S. CLARK	8/02/91			
sheet index		revision		F	F				
		sheet		1	2				

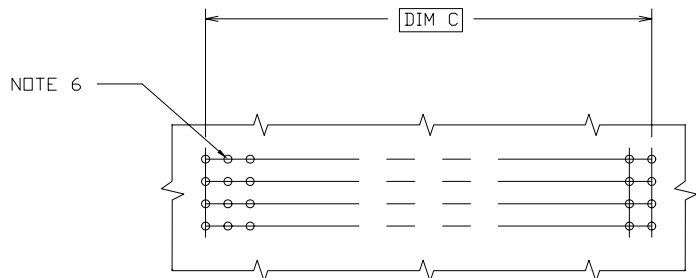
FCI
FCIconnect.com

Copyright FCI

PRODUCT NUMBER	DIM	LENGTH FORMULAS
SEE NOTE 2	DIM A	.100/2.54 X NO. OF COLUMNS + .15/3.8
	DIM C	.100/2.54 X NO. OF COLUMNS - .100/2.54

NOTES:

- THIS PRODUCT IS CONFIGURED IN SIZES OF 10 THRU 50 COLUMNS IN INCREMENTS OF ONE.
IE: 10,11,12,13,.....49,50.
- PRODUCT DESCRIPTION CODE:
50355 - X YYY Z
 - 50355 - BASE NUMBER
 - X - PLATING (NOTE 4)
 - YYY - NO OF POSITIONS
 - Z - TAIL LENGTH (NOTE 5)
- HOUSING MAT'L: GLASS AND MINERAL FILLED HIGH TEMP. THERMOPLASTIC. FLAME RETARDANT PER UL94V-0. COLOR: BLACK.
PIN MAT'L: PHOS BRONZE
- PLATING, CONTACT AREA OPTIONS:
1 = 30u"/.76u GOLD
3 = 50u"/1.27u GOLD
5 = 30u"/.76u GXT
- TAIL LENGTH OPTIONS:
A = .177/4.5 P = .470/11.94 .062 PCB/SHROUD
C = .533/13.54 L = .177/4.50 .062 PCB
D = .733/18.62
G = .250/6.35
- ø.0453/1.151 DRILLED HOLE PLATED WITH .0003/0.07 MIN SnPb OVER .001/.03 TO .003/.08 Cu. PLATING TO ACHIEVE A ø.040±.003/1.02±.08 HOLE.
- TO ASSURE PROPER INSTALLATION; MANUFACTURER'S TOOLING AS SPECIFIED IN INSTRUCTION MANUAL 155915-001, MUST BE USED. PIN MATING LENGTH WILL BE ±.002/.05 AFTER INSTALLATION.
- MANUFACTURER'S NAME AND P/N, AND LOT CODE TO APPEAR ON THIS SURFACE PER BUS-12-108.
- FOR DOCUMENTATION MENU, SEE SPECIFICATION BUS-01-057.
- FOR PRODUCT PERFORMANCE SEE PRODUCT SPECIFICATION NUMBER BUS-12-090.
- STANDARD MATING LENGTH IS .22/5.6. OTHER COMMON LENGTHS AVAILABLE ARE .18/4.6 AND .26/6.6. FIRST-MATE/LAST-BREAK APPLICATIONS CAN BE DEVELOPED BY SELECTIVELY LOADING THESE VARYING MATING LENGTHS - SEE DRAWING P/N 50145. CUSTOM MATING LENGTHS ARE AVAILABLE. CONTACT YOUR CUSTOMER SERVICE REPRESENTATIVE FOR INFORMATION.



RECOMMENDED PCB LAYOUT
ALL HOLES LOCATED ON .100/2.54 GRID
UNLESS OTHERWISE SPECIFIED

mat'l. code		surface ISO 1302 ✓		tolerance ISO 406 ISO 1101		projection ⊕		product family HPC	
ltr	ecn	no	dr	date		tolerances unless otherwise specified		title	
F						angles	linear	INCH/MM	
						σ±2'		scale 1:1	
			dr	S. SHEAFFER	1/16/91			FCJ	
			enfr	S. CLARK	8/02/91			sheet 2 of 2 size	
			chr	S. CLARK	8/02/91			50355 A3	
			appd	S. CLARK	8/02/91			type Product Customer Drawing	
sheet index	revision sheet								

Copyright FCI
FCIconnect.com