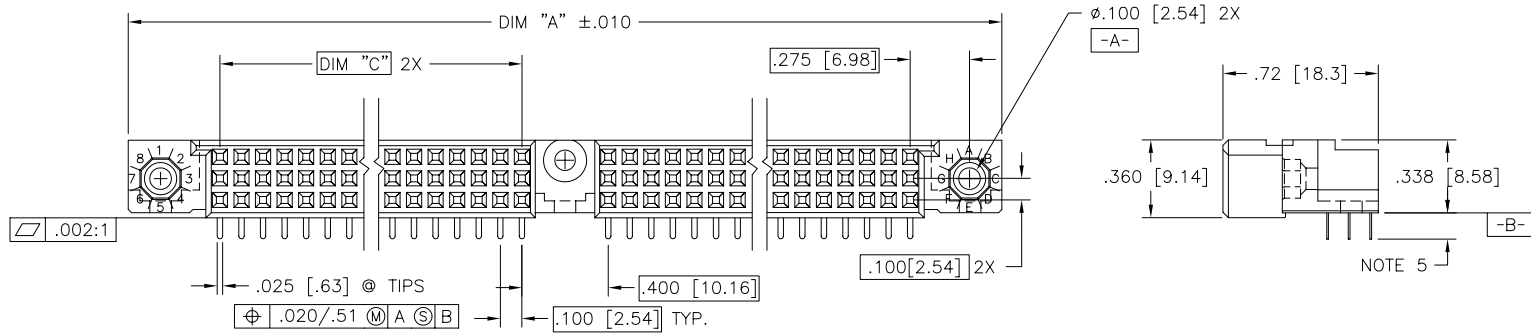
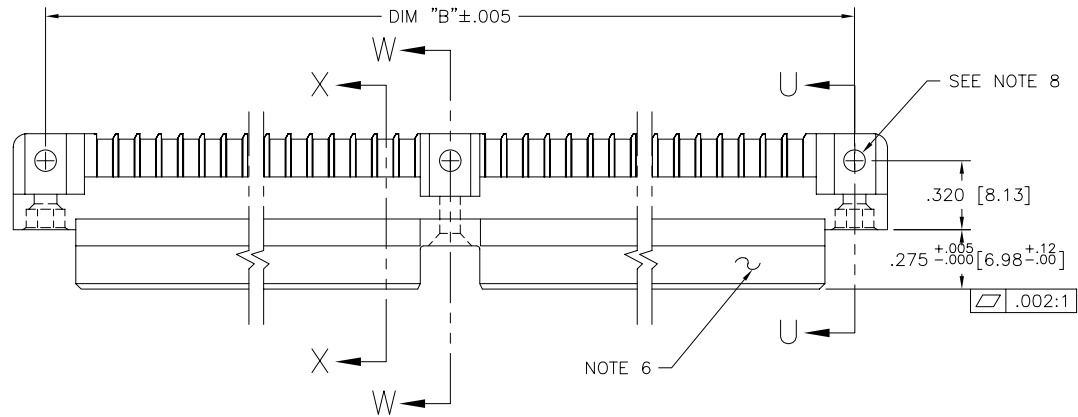


PRODUCT NUMBER  
SEE NOTE 1



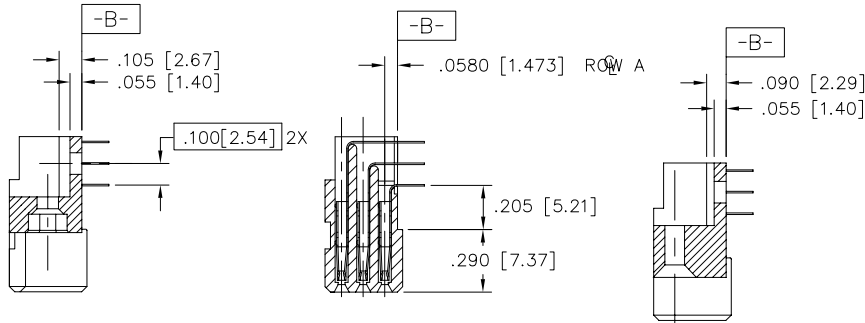
mat'l. code		surface ISO 1302 ✓		tolerance ISO 406 ISO 1101		projection INCH/MM		product family HPC	
ltr	ecn no	dr	date	tolerances unless otherwise specified		INCH/MM		title	
A	V40979	GAH	6/8/94	angles	.XX±.01/.3	INCH/MM		3 ROW R/A RECEPTACLE SOLDER TAIL, 1 GUIDE PIN	
B	V61331	MSC	9/5/96	linear	.XXX±.005/.13	scale 1:1		dwg no	
C	V00259	JWS	1/21/00	0°±2'	.xxxx±.0020/.051	FCI		sheet 1 of 3	
D	V01357	CGD	6/28/00	dr	G. HULL 7/28/94	type		Product Customer Drawing	
E	M06-0255	AGS	7/7/06	engr	D. HORCHLER 6/8/94	A3		50825	
				chr	D. HORCHLER 7/28/94				
				appd	S. CLARK 8/5/94				
sheet index	revision sheet	E 1	E 2	E 3					



Copyright FCI

form: A3

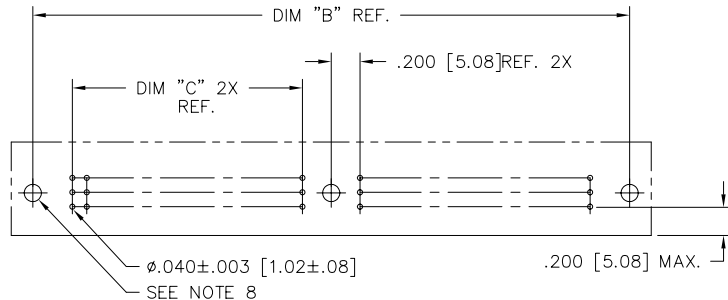
PRODUCT NUMBER	DIM.	LENGTH FORMULAS
SEE NOTE 1	DIM A	.100/2.54 X NO. OF COLUMNS + 1.05/26.7
	DIM B	.100/2.54 X NO. OF COLUMNS + .750/19.05
	DIM C	.100/2.54 X NO. OF COLUMNS DIVIDED BY 2 - .100/2.54



SECTION U-U  
NO SPECIAL FEATURES

SECTION X-X

SECTION W-W  
NO SPECIAL FEATURES



RECOMMENDED PCB LAYOUT  
(ALL HOLES LOCATED ON .100 [2.54] GRID  
UNLESS OTHERWISE SPECIFIED)

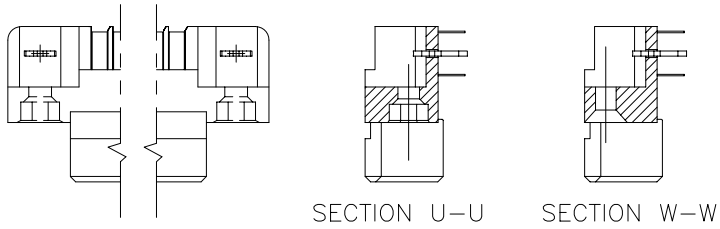
NOTES:

- PRODUCT NUMBERING CODE:  
50825 - X YYY Z S  
SPECIAL FEATURES(NOTE 8)  
TAIL LENGTH(NOTE 5)  
NO. OF POSITIONS(NOTE 2)  
PLATING(NOTE 4)  
BASE NUMBER
- THIS PRODUCT IS CONFIGURED IN SIZES OF 20 THRU 122 COLUMNS IN INCREMENTS OF TWO.  
i.e.: 20,22,24,26.....118,120,122.
- HOUSING MATERIAL: GLASS AND MINERAL FILLED HIGH TEMP. THERMOPLASTIC. FLAME RETARDANT PER UL94V-0. COLOR: BLACK.  
CONTACT MATERIAL: BeCu
- PLATING CONTACT AREA OPTIONS:  
1 = 30u"/.76u GOLD  
3 = 50u"/1.27u GOLD  
5 = 30u"/.76u GXT  
ALL SOLDER TAILS TIN/LEAD
- TAIL LENGTH OPTIONS:  
E = .125±.010 / 3.18±.25  
F = .145±.010 / 3.68±.25  
H = .180±.010 / 4.57±.25
- MANUFACTURERS NAME, PART NUMBER AND LOT CODE TO APPEAR ON THIS SURFACE PER BUS-12-108.
- FOR DOCUMENTATION MENU, SEE SPEC. BUS-01-057.
- SPECIAL FEATURES: (SEE SHEET 3)  
- IF CODE IS OMITTED FROM PRODUCT NO.; CONNECTOR IS PROVIDED AS SHOWN, NO SPECIAL FEATURES ARE SELECTED. FOR P.C.B. ATTACHMENT IN A .120 [3.05] MOUNTING HOLE.  
"A" = IF SPECIFIED, PRE-INSTALLED CLAW FOR P.C.B. ATTACHMENT IN A  $\phi$ .100 MOUNTING HOLE. (AVAILABLE IN "E" TAIL LENGTH ONLY).  
"B" = IF SPECIFIED, PRE-INSTALLED CLAW FOR P.C.B. ATTACHMENT IN A  $\phi$ .120 MOUNTING HOLE.  
"C" = IF SPECIFIED, MOLDED GUIDE PINS w/CLAW FOR P.C.B. ATTACHMENT IN A  $\phi$ .120 MOUNTING HOLE.  
"D" = IF SPECIFIED, MOLDED GUIDE PINS w/ $\phi$ .120 MOUNTING HOLE (NO CLAW).
- CLAW DIMENSION DETERMINED BY P.C.B. HOLE DIAMETER.

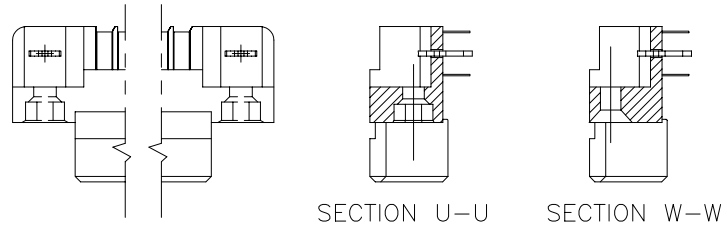
mat'l. code		surface ISO 1302 ✓ ISO 406 ISO 1101		tolerance ISO 406 ISO 1101		projection INCH/MM		product family HPC	
ltr	ecn	no	dr	date		tolerances unless otherwise specified		title	
E						angles	.XX±.01/.3	3 ROW R/A RECEPTACLE SOLDER TAIL, 1 GUIDE PIN	
						linear	.XXX±.005/.13		
						0°±2'	.XXXX±.0020/.051	scale 1:1	
			dr	G. HULL 7/28/94				dwg no sheet2 of 3 size	
			enrg	D. HORCHLER 6/8/94				50825 A3	
			chr	D. HORCHLER 7/28/94				type Product Customer Drawing	
			appd	S. CLARK 8/5/94					
sheet index		revision sheet							

PRODUCT NUMBER  
SEE NOTE 1

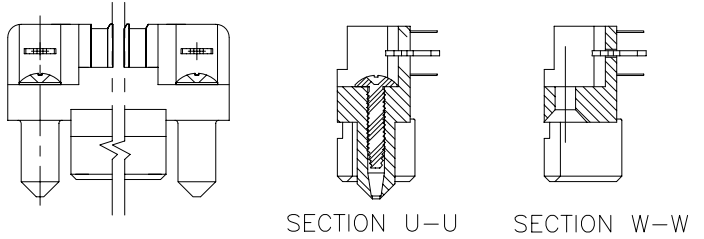
SPECIAL FEATURE OPTION A



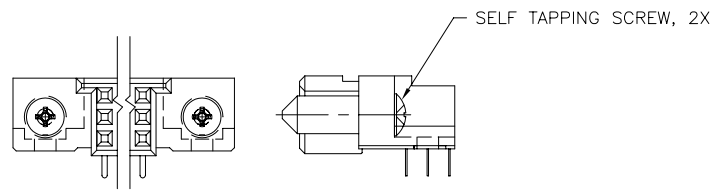
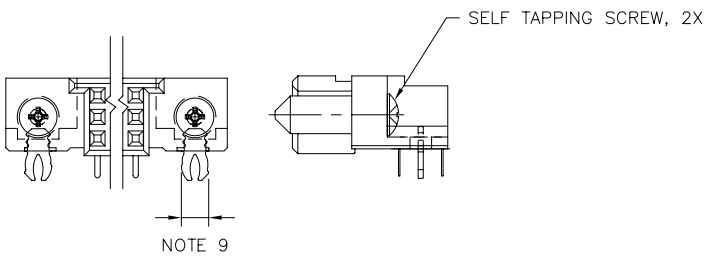
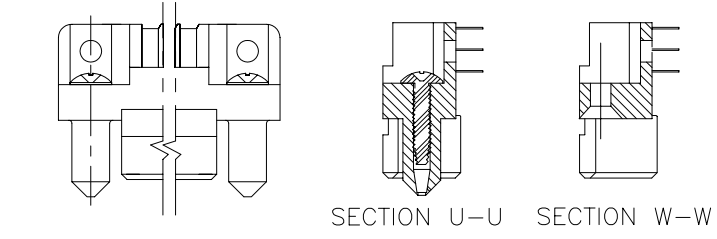
SPECIAL FEATURE OPTION B



SPECIAL FEATURE OPTION C



SPECIAL FEATURE OPTION D



Copyright FCI

mat'l. code		surface ISO 1302 ✓	tolerance ISO 406 ISO 1101	projection INCH/MM	product family HPC
ltr	ecn	no	dr	date	tolerances unless otherwise specified
E					angles .XX±.01/.3 linear .XXX±.005/.13
					0°±2' .xxx±.0020/.051
			dr	G. HULL	7/28/94
			enr	D. HORCHLER	6/8/94
			chr	D. HORCHLER	7/28/94
			appd	S. CLARK	8/5/94
sheet index	revision sheet				
				scale 1:1	FCI
					title 3 ROW R/A RECEPTACLE SOLDER TAIL, 1 GUIDE PIN
					dwg no 50825 sheet 3 of 3 size A3
					type Product Customer Drawing