

Customer Information Sheet

DRAWING No.: M80-891XXXX

SHEET 2 OF 2

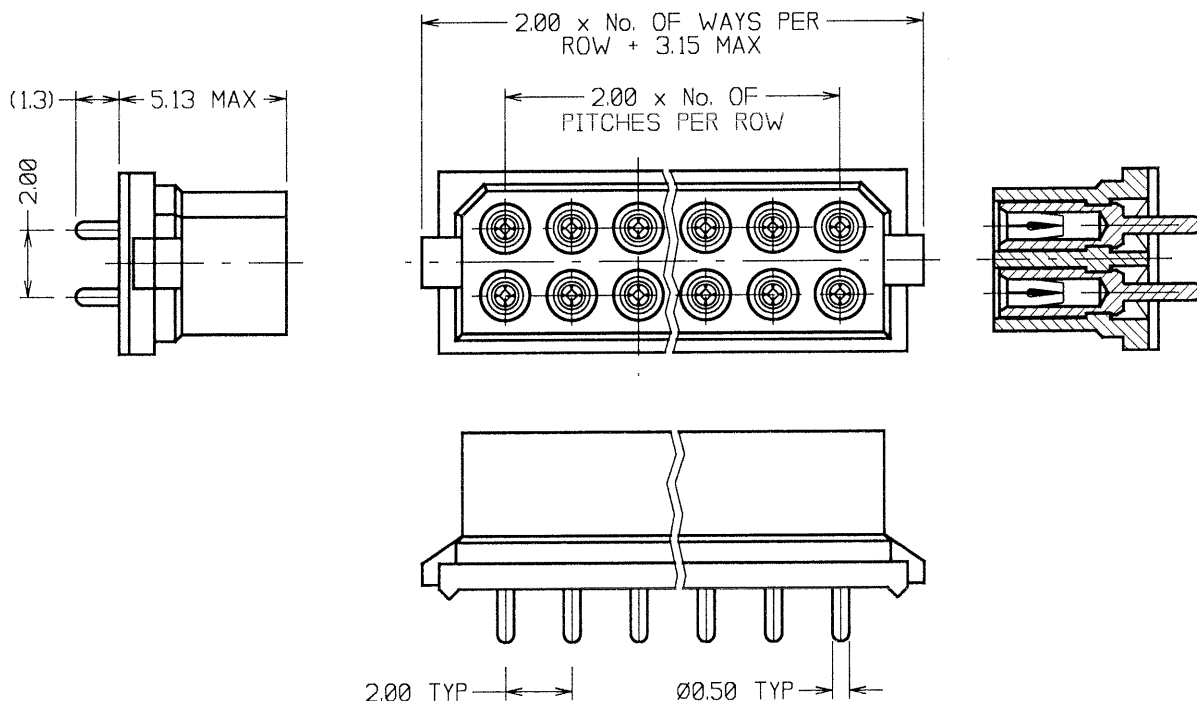
IF IN DOUBT - ASK

©

NOT TO SCALE

THIRD ANGLE PROJECTION

ALL DIMENSIONS IN mm



SPECIFICATIONS:

MATERIAL:
 MOULDING - GLASS-FILLED POLYESTER, UL94V-0
 CLIP - BERYLLIUM COPPER
 SHELL - BRASS

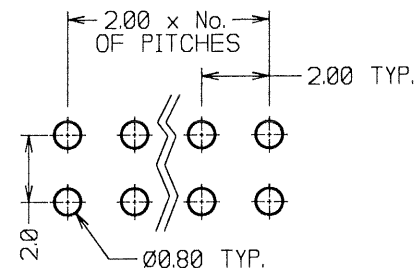
FINISH:
CONTACTS:
 01 - 0.30µ GOLD CLIP, 4.0µ TIN/LEAD SHELL
 05 - 0.30µ GOLD CLIP, 0.28µ GOLD SHELL
 T6 - 1.3µ TIN/LEAD CLIP, 4µ TIN/LEAD SHELL

ELECTRICAL:
 CURRENT RATING AT 25°C - 3.0A MAX
 CURRENT RATING AT 85°C - 2.2A MAX
 WORKING VOLTAGE - 120V AC/DC
 VOLTAGE PROOF - 360V AC/DC
CONTACT RESISTANCE:
 INITIAL - 20 MILLIOHMS MAX
 AFTER CONDITIONING - 25 MILLIOHMS MAX
INSULATION RESISTANCE:
 INITIAL - 1000 MEGOHMS MIN
 AFTER CONDITIONING - 100 MEGOHMS MIN

ENVIRONMENTAL:
 TEMPERATURE RANGE - -55°C TO +125°C

MECHANICAL:
 DURABILITY - 500 OPERATIONS
 INSERTION FORCE - 2.8N MAX, 1.0N MIN
 WITHDRAWAL FORCE - 1.8N MAX, 0.2N MIN

PACKING:
 TUBE
 FOR COMPLETE SPECIFICATION, SEE COMPONENT SPECIFICATION C005XX (LATEST ISSUE)



RECOMMENDED PCB LAYOUT

BRITISH STANDARD
 ORDER CODE: TO BS9525 F0033

B5741-2XX-F-N-X

TOTAL No. OF WAYS
 04, 06, 08, 10, 12, 14, 16,
 18, 20, 26, 34, 44

FINISH
 0 - GOLD CLIP, TIN/LEAD SHELL
 05 - GOLD CLIP, GOLD SHELL
 2 - GOLD CLIP, GOLD SHELL

COMMERCIAL
 ORDER CODE:

M80-891XXXX

TOTAL No. OF WAYS
 04, 06, 08, 10, 12, 14, 16,
 18, 20, 26, 34, 44

FINISH
 01 - GOLD CLIP, TIN/LEAD SHELL
 05 - GOLD CLIP, GOLD SHELL
 T6 - TIN/LEAD CLIP & SHELL

JMB	5	31.08.06	9398
NAME	ISS.	DATE	C/NOTE
APPROVED: <i>[Signature]</i>			
CHECKED: <i>[Signature]</i>			
DRAWN:		WJ BOURNE	
CUSTOMER REF.:			
ASSEMBLY DRG:			

HARWIN

HARWIN USA
 TEL: 603 893 5376
 FAX: 603 893 5396
 mls@harwin.com

HARWIN Europe (UK)
 TEL: 023 9231 4545
 FAX: 023 9231 4590
 mls@harwin.co.uk

HARWIN Asia
 TEL: +65 6 779 4909
 FAX: +65 6 779 3868
 mls@harwin.com.sg

THIS DRAWING AND ANY INFORMATION OR DESCRIPTIVE MATTER SET OUT HEREON ARE CONFIDENTIAL AND COPYRIGHT PROPERTY OF THE HARWIN GROUP AND MUST NOT BE DISCLOSED, LOANED, COPIED OR USED FOR MANUFACTURING, TENDERING OR FOR ANY OTHER PURPOSE WITHOUT THEIR WRITTEN PERMISSION.

TOLERANCES
 X. - ±1mm
 XX - ±0.25mm
 XXX - ±0.10mm
 X.XXX - ±0.01mm
 ANGLES - ±5°
 UNLESS STATED

MATERIAL:
 SEE ABOVE

FINISH: SEE ABOVE

S/AREA: mm²

TITLE: DATAMATE 2mm PITCH
 VERTICAL 1.3mm PC TAIL DIL
 SOCKET ASSEMBLY

DRAWING NUMBER:
M80-891XXXX

SHT
 2 OF 2