

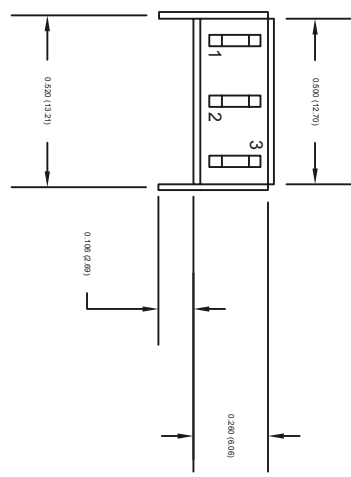
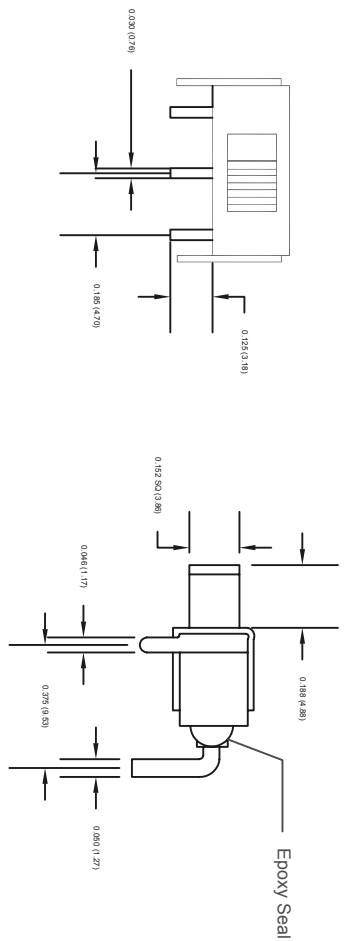


SPC  
TECHNOLOGY

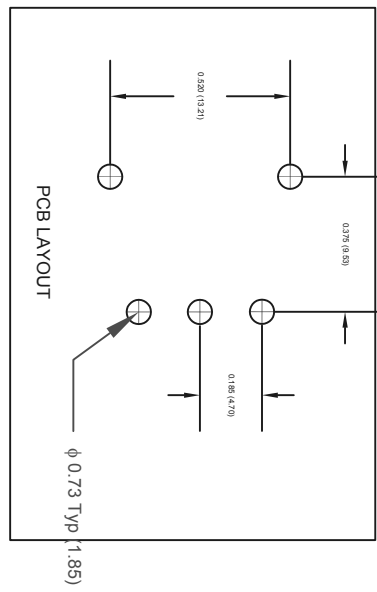
ALL RIGHTS RESERVED. NO PORTION OF THIS PUBLICATION, WHETHER IN WHOLE OR IN PART CAN BE REPRODUCED WITHOUT THE EXPRESS WRITTEN CONSENT OF SPC TECHNOLOGY.

SPC-F005.DWG

REVISONS		DOC. NO. SPC-F005	Effective: 7/8/02		DCP No: 1398	
DCP #	REV	DESCRIPTION	DRAWN	DATE	CHECKD	DATE
			SDH	07-08-10	JAG	17-08-10
					XXX	21-08-10



Dimensions : Inches (mm)



**Specifications:**

**Electrical:**  
 Contact rating : 0.4 VA Max. at 20 V Max. (AC or DC)  
 Contact resistance : 10 milliohms max.  
 Insulation resistance : 1,000 Megohms min. at 500 Vdc  
 Dielectric strength : 1,000 VRMS

**Mechanical:**

Life : 30,000 Cycles  
**Environmental:**  
 Operating temperature : - 30°C to + 85°C

**Material:**

Case : DAP, UL 94V-0  
 Housing : Stainless steel  
 Actuator : Nylon, black  
 Contact/terminals : Copper alloy, Gold plated

Conn. Terms	Switching Function		
	ON	NONE	ON
2-1	Open	2-3	

Schematic SPDT

**DISCLAIMER:**  
 ALL STATEMENTS AND TECHNICAL INFORMATION CONTAINED HEREIN ARE BASED UPON INFORMATION AND/OR TESTS WE BELIEVE TO BE ACCURATE AND RELIABLE. SINCE CONDITIONS OF USE ARE BEYOND OUR CONTROL, THE USER SHALL DETERMINE THE SUITABILITY OF THE PRODUCT FOR THE INTENDED USE AND ASSUME ALL RISK AND LIABILITY WHATSOEVER IN CONNECTION THEREWITH.

**TOLERANCES:**  
 UNLESS OTHERWISE SPECIFIED, DIMENSIONS ARE FOR REFERENCE PURPOSES ONLY.

DRAWN BY:	DATE:
SDH	07-08-10
CHECKED BY:	DATE:
JAG	19-08-10
APPROVED BY:	DATE:
XXX	21-08-10

DRAWING TITLE:		DRAWING FILE	
Slide Switch, Right Angle, SPDT		ELECTRONIC FILE	
SIZE	DWG. NO.		REV
XXX	XXX	53H6679	A
SCALE:	NTS	U.O.M.: INCHES [mm]	SHEET: 1 OF 1

**Part Number Table**

Description	Part Number
Slide Switch, Right Angle, SPDT	SPC21131

