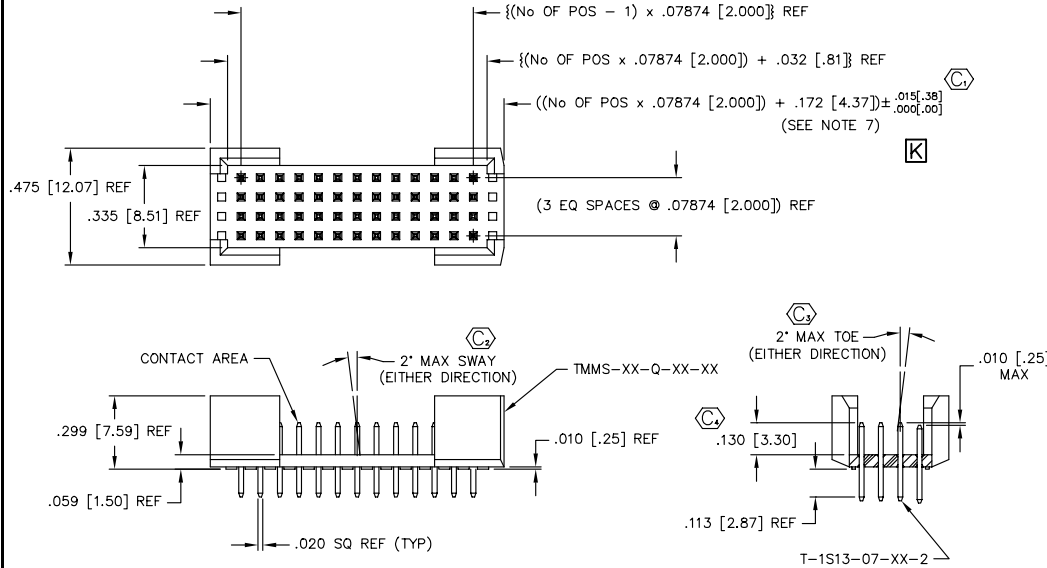


REV. K

FIG. 1

DIMENSIONS ARE IN INCHES		UNLESS OTHERWISE NOTED		TOLERANCES ARE:		TITLE: 2mm QUAD ROW SHROUDED TERMINAL ASM		DWG NO: TMS-1XX-XX-XX-Q-XX-XX	
ONE PLACE DECIMALS ±.1		THREE PLACE DECIMALS ± .005		ANGLES ± 5°				SHEET 1 OF 2	
TWO PLACE DECIMALS ±.01		FOUR PLACE DECIMALS ± .002							

DO NOT SCALE FROM THIS PRINT



TMMS-1XX-XX-XX-Q-XX-XX

No. OF POSITIONS
-05 THRU -50

LEAD STYLE
-01: .130 [3.30] POST

PLATING
-G: GOLD
-S: SELECTIVE GOLD
-L: SELECTIVE LIGHT GOLD
-F: FLASH SELECTIVE GOLD
-H: HEAVY SELECTIVE GOLD
-LM: LIGHT SELECTIVE GOLD/MATTE TIN TAIL
-FM: FLASH GOLD/MATTE TIN TAIL
-SM: SELECTIVE GOLD/MATTE TIN TAIL

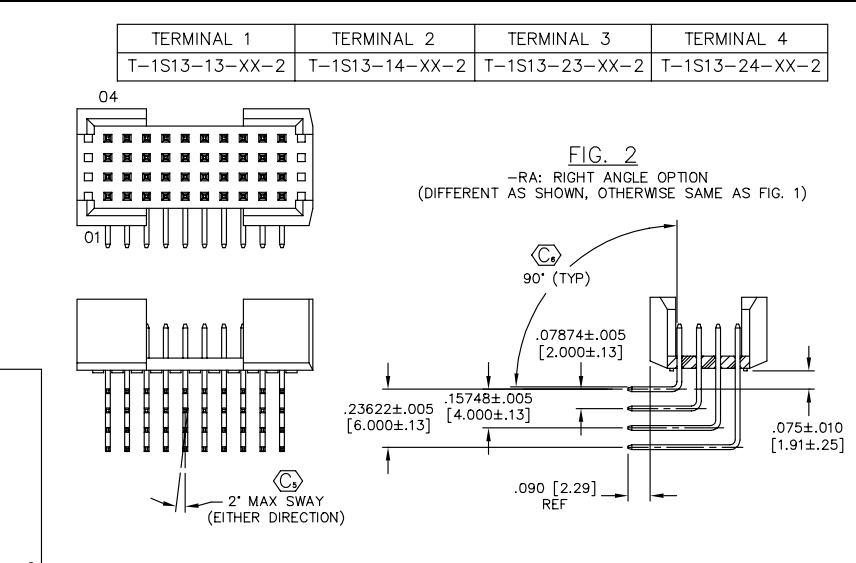
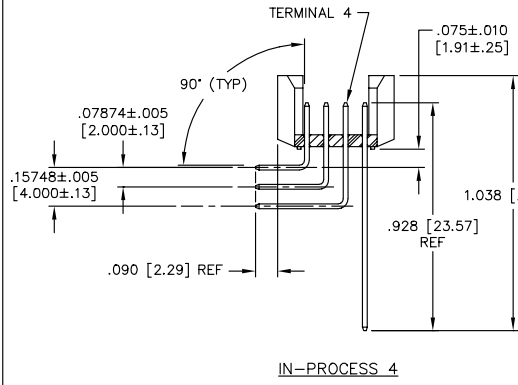
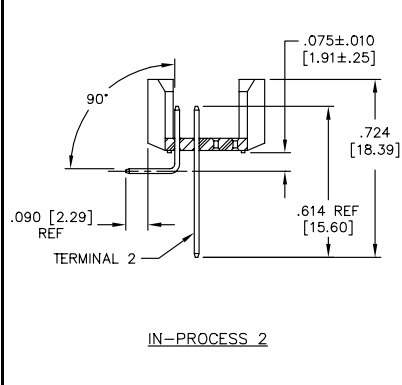
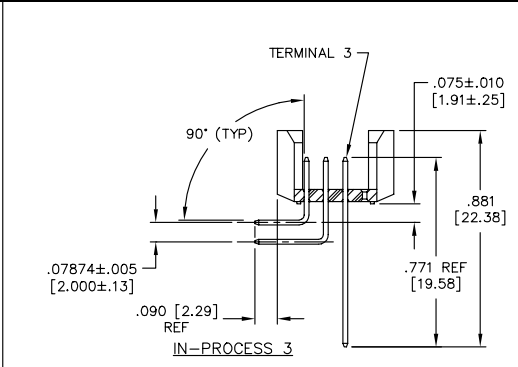
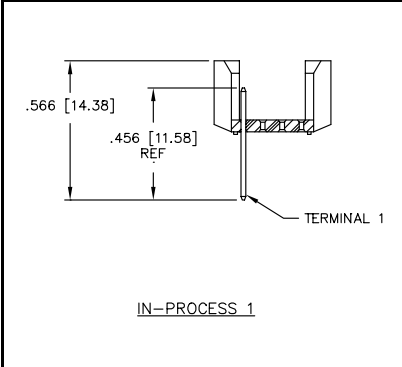
OPTIONS
* -BL: MOLDED BOARD LOCKS (AVAILABLE WITH -RA ONLY) (USE TMS-XX-Q-XX-BL) (SEE FIG 3, SHT 2)
* -A: MOLDED ALIGNMENT PIN (AVAILABLE WITH -RA ONLY) (USE TMS-XX-Q-XX-A) (SEE FIG 4, SHT 2)

OPTION
-RA: RIGHT ANGLE (SEE FIG. 2) (LEAVE BLANK FOR THRU HOLE VERSION)

ROW SPECIFICATION
-Q: QUAD ROW (SEE FIG. 1) (USE TMS-XX-Q-XX)

* = NOT RELEASED FOR PRODUCTION

NOTES:
1.) MAX. ALLOWABLE BOW: .005 IN/IN AFTER ASSEMBLY.
2.) MAX. PIN ROTATION IN BODY: 2°
3.) PUSHOUT FORCE SHALL BE 1 lb MIN.
4.) (C) REPRESENTS A CRITICAL DIMENSION.
5.) ALL DIMENSIONS IN BRACKETS [] TO BE MILLIMETERS.
6.) ALL DIMENSIONS TO BE SYMMETRICAL ABOUT C.L. WITHIN A VARIANCE OF .002 [.051] UNLESS OTHERWISE NOTED.
7.) .010[.25] MAX CUT FLASH (BRUSH CLEAN AS NECESSARY).



PROPRIETARY NOTE
THIS DOCUMENT CONTAINS INFORMATION CONFIDENTIAL AND PROPRIETARY TO SAMTEC INC. AND SHALL NOT BE REPRODUCED OR TRANSFERRED TO OTHER DOCUMENTS OR DISCLOSED TO OTHERS OR USED FOR ANY PURPOSE OTHER THAN THAT FOR WHICH IT WAS OBTAINED WITHOUT THE EXPRESSED WRITTEN CONSENT OF SAMTEC INC.

MATERIAL:
INSULATOR:
LCP VECTRA E130, UL RATED 94V-0
COLOR: BLACK
TERMINAL:
SPRING TEMPER PHOS BRONZE

samtec

520 PARK EAST BLVD. NEW ALBANY, INDIANA 47150
PHONE (812) 944-6733 P.O. BOX 1147
CODE 55322

MADE BY:
BRATCHER 6-18-98

TMMS-1XX-XX-XX-Q-XX-XX
SHEET 1 OF 2