



SURFACE MOUNT LED T-1³/₄ (5mm)

RIGHT ANGLE-HIGH BRIGHTNESS
WIDE ANGLE VIEWING

RED
AMBER
GREEN
BLUE

YELLOW
RED/
GREEN

SERIES 6240H

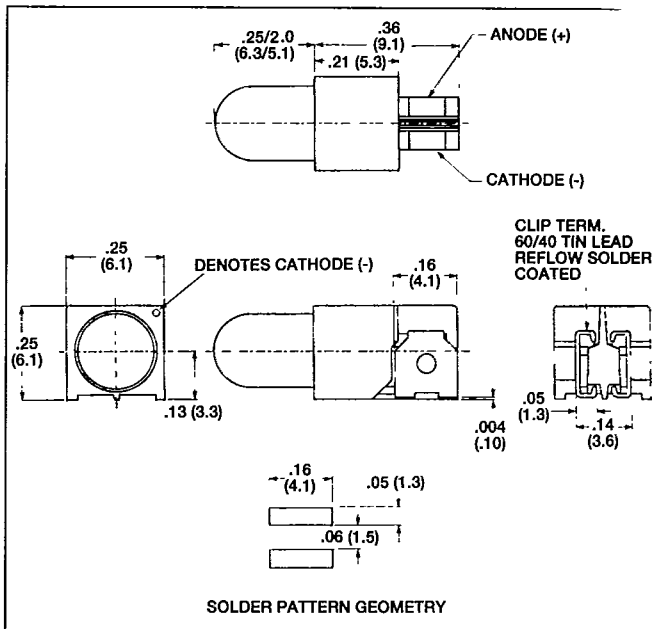
FEATURES

- Available in all colors – Red, amber, green, blue and yellow.
- Bi-color – Red/green, brightness matched chips.
- T1 3/4 right angle mounting.
- Direct optics, no bends/no losses
- Wide angle visibility – high profile LED for thru-panel applications.
- Available options:
High efficiency, low current (2mA).
Built-in resistors – operate at 5 volt or 12 volt.
- IR and vapor phase compatibility.
- High contrast black housing, meets UL 94V-O.
- “J” lead design – high reliability.
- Anti-static tape-and-reel packaging for auto-insertion (per EIA SPEC 481).
- Patents pending.



OUTLINE DIMENSIONS

T-41-23



SPECIFICATIONS	COLOR	TYPICAL INTENSITY	RATED CURRENT	CONTINUOUS FORWARD CURRENT-MAX.	FORWARD VOLTAGE TYP.	FORWARD VOLTAGE MAX.	REVERSE BREAKDOWN VOLTAGE MIN.	PEAK WAVE LENGTH	
MODEL NO.		mcd	mA	mA	V	V	V	nm	
6240H1	RED	7	10	25	2.2	3.0	5	626	STANDARD OPTIONS
6240H3	AMB	7	10	25	2.2	3.0	5	602	
6240H5	GRN	5.2	10	25	2.3	3.0	5	569	
6240H6	BLUE	1.3	30	35	3.2	3.5	5	470	
6240H7	YEL	8	10	20	2.2	3.0	5	585	
6240H1/5	RED/GRN	6.0	20	30	2.3	3.0	5	650/568	BI-COLOR
6240H1LC	RED	1.2	2	7	1.8	2.2	5	635	LOW CURRENT
6240H5LC	GRN	1.2	2	7	1.8	2.2	5	565	
6240H7LC	YEL	1.2	2	7	1.8	2.7	5	583	
6240H1-5V	RED	8.0	13	20	5	7.5	5	635	BUILT-IN RESISTOR 5 VOLTS
6240H5-5V	GRN	8.0	13	15	5	7.5	5	565	
6240H7-5V	YEL	8.0	13	15	5	7.5	5	583	
6240H1-12V	RED	8.0	13	20	12	15.0	5	635	BUILT-IN RESISTOR 12 VOLTS
6240H5-12V	GRN	8.0	13	20	12	15.0	5	565	
6240H7-12V	YEL	8.0	13	20	12	15.0	5	583	



SURFACE MOUNT LED T-1³/₄ (5mm)

24mm WIDE TAPES - 750 LEDs PER REEL

RED
AMBER
GREEN
BLUE

YELLOW
RED/
GREEN

SERIES 6240H PACKAGING

T-41-23

