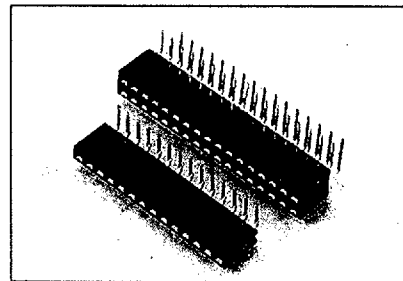


# .100" (2.54mm) P.C.B. SOCKET



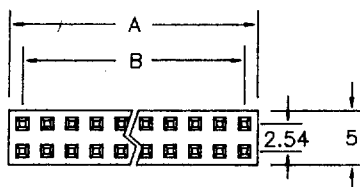
## SPECIFICATION

- \* Current Rating:  
3 A
- \* Withstanding Voltage:  
500 VAC ( 1 min.)
- \* Insulation Resistance:  
1000 MΩ min.
- \* Contact Resistance:  
20 mΩ max.
- \* Operating Temperature:  
-40°C to +85°C

## MATERIAL

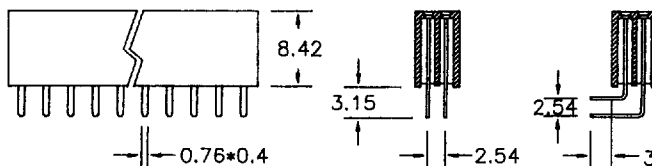
- \* Contact: Phosphor Bronze
- \* Insulator: PBT & 30% G. F.
- \* Plated: Gold or Tin

### Dual Row

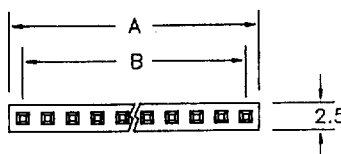


301

302

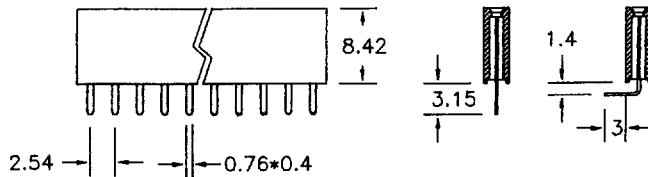


### Single Row

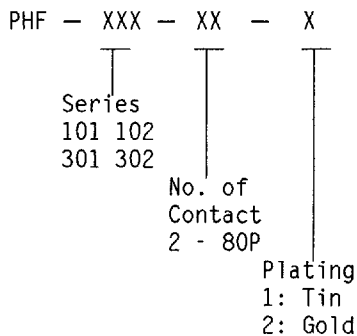


101

102



## ORDER INFORMATION



POS	2 Thru 40 4 Thru 80
A	2.54*Position No.
B	2.54*Position No.-2.54

Specifications are subject to change without notice