

Ordering Information:

2762S *** 000
1 2

RoHS COMPLIANT

1. No. of circuits

2. Plating :

T= Tin plated 120u" min. over 30u" nickel overall

U= Gold flash over 30u" nickel overall

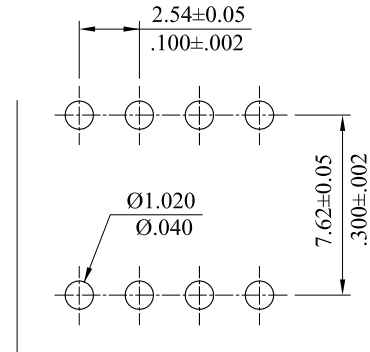
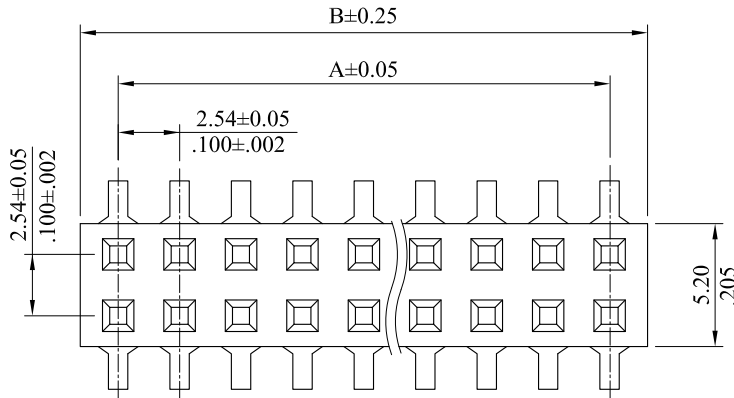
W= 15u" gold over 30u" nickel overall

Z= 30u" gold over 30u" nickel overall

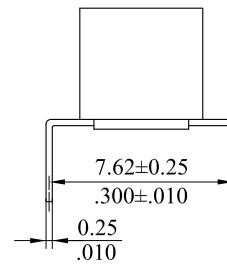
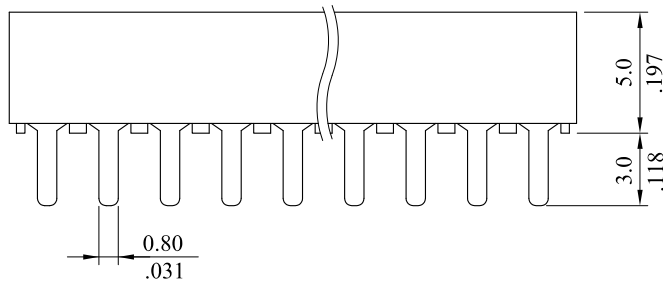
Material :

Insulator: Thermal Plastic UL94V-0

Contact : Phosphor Bronze



Recommended hole pattern



Circuits	Dimension		Circuits	Dimension	
	A	B		A	B
04	2.540(.100)	5.68(.224)	44	53.340(2.100)	56.48(2.224)
06	5.080(.200)	8.12(.320)	46	55.880(2.200)	59.02(2.324)
08	7.620(.300)	10.76(.424)	48	58.420(2.300)	61.56(2.424)
10	10.160(.400)	13.30(.524)	50	60.960(2.400)	64.10(2.524)
12	12.700(.500)	15.84(.624)	52	63.500(2.500)	66.64(2.624)
14	15.240(.600)	18.38(.724)	54	66.040(2.600)	69.18(2.724)
16	17.780(.700)	20.92(.824)	56	68.580(2.700)	71.72(2.824)
18	20.320(.800)	23.46(.924)	58	71.120(2.800)	74.26(2.924)
20	22.860(.900)	26.00(1.024)	60	73.660(2.900)	76.80(3.024)
22	25.400(1.000)	28.54(1.124)	62	76.200(3.000)	79.34(3.124)
24	27.940(1.100)	31.08(1.224)	64	78.740(3.100)	81.88(3.324)
26	30.480(1.200)	33.62(1.324)	66	81.280(3.200)	84.42(3.324)
28	33.020(1.300)	36.16(1.424)	68	83.820(3.300)	86.96(3.424)
30	35.560(1.400)	38.70(1.524)	70	86.360(3.400)	89.50(3.524)
32	38.100(1.500)	41.24(1.624)	72	88.900(3.500)	92.04(3.624)
34	40.640(1.600)	43.78(1.724)	74	91.440(3.600)	94.58(3.724)
36	43.180(1.700)	46.32(1.824)	76	93.980(3.700)	97.12(3.824)
38	45.720(1.800)	48.86(1.924)	78	96.520(3.800)	99.66(3.924)
40	48.260(1.900)	51.40(2.024)	80	99.060(3.900)	101.60(4.000)
42	50.800(2.000)	53.94(2.124)			

G	ES101227			<p>LECO CORPORATION</p> <p>GENERAL TOLERANCES: (UNLESS SPECIFIED)</p> <table border="1"> <thead> <tr> <th></th> <th>mm</th> <th>inch</th> </tr> </thead> <tbody> <tr> <td>1 PLACE</td> <td>± 0.30</td> <td>± --</td> </tr> <tr> <td>2 PLACES</td> <td>± 0.20</td> <td>± .012</td> </tr> <tr> <td>3 PLACES</td> <td>± 0.10</td> <td>± .008</td> </tr> <tr> <td>4 PLACES</td> <td>± --</td> <td>± .004</td> </tr> </tbody> </table> <p>ANGULAR ± (1°)</p>		mm	inch	1 PLACE	± 0.30	± --	2 PLACES	± 0.20	± .012	3 PLACES	± 0.10	± .008	4 PLACES	± --	± .004	APPROVED:	PART NO.:			
	mm	inch																						
1 PLACE	± 0.30	± --																						
2 PLACES	± 0.20	± .012																						
3 PLACES	± 0.10	± .008																						
4 PLACES	± --	± .004																						
F	ES071009			DATE:	2762S***000																			
E	ES061117			CHECKED:	TITLE:																			
D	ES050431			DATE:	CONNECTOR																			
A	DWG REL			DRAWN:	DRAWING NO.:																			
REV.	ECO. NO.	CHG.	APP.	DATE:	276201S																			
					UNITS	SCALE	SIZE	SHEET	REV.															
					mm inch	3:1	A4	1/1	G															