

DM74LS390 Dual 4-Bit Decade Counter

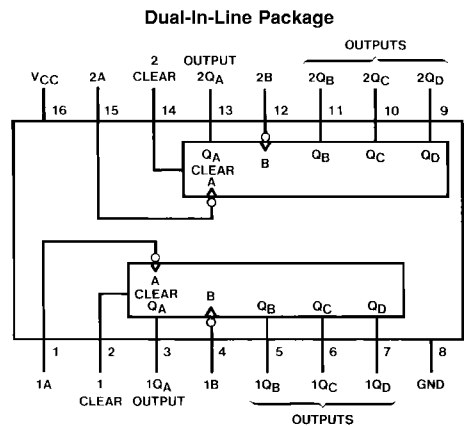
General Description

Each of these monolithic circuits contains eight master-slave flip-flops and additional gating to implement two individual four-bit counters in a single package. The 'LS390 incorporates dual divide-by-two and divide-by-five counters, which can be used to implement cycle lengths equal to any whole and/or cumulative multiples of 2 and/or 5 up to divide-by-100. When connected as a bi-quinary counter, the separate divide-by-two circuit can be used to provide symmetry (a square wave) at the final output stage. The 'LS390 has parallel outputs from each counter stage so that any submultiple of the input count frequency is available for system-timing signals.

Features

- Dual version of the popular 'LS90
- 'LS390 . . . individual clocks for A and B flip-flops provide dual ÷ 2 and ÷ 5 counters
- Direct clear for each 4-bit counter
- Dual 4-bit version can significantly improve system densities by reducing counter package count by 50%
- Typical maximum count frequency . . . 35 MHz
- Buffered outputs reduce possibility of collector commutation

Connection Diagram



Order Number DM74LS390M or DM74LS390N
See Package Number M16A or N16E

Function Tables

BCD Count Sequence

(Each Counter) (Note 1)

Count	Outputs			
	Q _D	Q _C	Q _B	Q _A
0	L	L	L	L
1	L	L	L	H
2	L	L	H	L
3	L	L	H	H
4	L	H	L	L
5	L	H	L	H
6	L	H	H	L
7	L	H	H	H
8	H	L	L	L
9	H	L	L	H

Note 1: Output Q_A is connected to input B for BCD count.

Note 2: Output Q_D is connected to input A for Bi-quinary count.

Note 3: H = High Level, L = Low Level.

Bi-Quinary (5-2)

(Each Counter) (Note 2)

Count	Outputs			
	Q _A	Q _D	Q _C	Q _B
0	L	L	L	L
1	L	L	L	H
2	L	L	H	L
3	L	L	H	H
4	L	H	L	L
5	H	L	L	L
6	H	L	L	H
7	H	L	H	L
8	H	L	H	H
9	H	H	L	L

Absolute Maximum Ratings (Note 4)

Supply Voltage	7V	A or B	5.5V
Input Voltage		Operating Free Air Temperature Range	0°C to +70°C
Clear	7V	DM74LS	
		Storage Temperature Range	-65°C to +150°C

Recommended Operating Conditions

Symbol	Parameter	DM74LS390			Units
		Min	Nom	Max	
V _{CC}	Supply Voltage	4.75	5	5.25	V
V _{IH}	High Level Input Voltage	2			V
V _{IL}	Low Level Input Voltage			0.8	V
I _{OH}	High Level Output Current			-0.4	mA
I _{OL}	Low Level Output Current			8	mA
f _{CLK}	Clock Frequency (Note 5)	A to Q _A	0	25	MHz
		B to Q _B	0	20	
f _{CLK}	Clock Frequency (Note 6)	A to Q _A	0	20	MHz
		B to Q _B	0	15	
t _w	Pulse Width (Note 5)	A	20		ns
		B	25		
		Clear High	20		
t _{REL}	Clear Release Time (Notes 7, 8)	25↓			ns
T _A	Free Air Operating Temperature	0		70	°C

Note 4: The "Absolute Maximum Ratings" are those values beyond which the safety of the device cannot be guaranteed. The device should not be operated at these limits. The parametric values defined in the "Electrical Characteristics" table are not guaranteed at the absolute maximum ratings. The "Recommended Operating Conditions" table will define the conditions for actual device operation.

Note 5: C_L = 15 pF, R_L = 2 kΩ, T_A = 25°C and V_{CC} = 5V.

Note 6: C_L = 50 pF, R_L = 2 kΩ, T_A = 25°C and V_{CC} = 5V.

Note 7: The symbol (↓) indicates the falling edge of the clear pulse is used for reference.

Note 8: T_A = 25°C and V_{CC} = 5V.

Electrical Characteristics

over recommended operating free air temperature range (unless otherwise noted)

Symbol	Parameter	Conditions	Min	Typ (Note 9)	Max	Units	
V _I	Input Clamp Voltage	V _{CC} = Min, I _I = -18 mA			-1.5	V	
V _{OH}	High Level Output Voltage	V _{CC} = Min, I _{OH} = Max V _{IL} = Max, V _{IH} = Min	2.7	3.4		V	
V _{OL}	Low Level Output Voltage	V _{CC} = Min, I _{OL} = Max V _{IL} = Max, V _{IH} = Min		0.35	0.5	V	
		I _{OL} = 4 mA, V _{CC} = Min		0.25	0.4		
I _I	Input Current @ Max Input Voltage	V _{CC} = Max, V _I = 7V	Clear		0.1	mA	
		V _{CC} = Max	A		0.2		
		V _I = 5.5V	B		0.4		
I _{IH}	High Level Input Current	V _{CC} = Max	Clear		20	μA	
		V _I = 2.7V	A		40		
			B		80		
I _{IL}	Low Level Input Current	V _{CC} = Max, V _I = 0.4V	Clear		-0.4	mA	
			A		-1.6		
			B		-2.4		
I _{OS}	Short Circuit Output Current	V _{CC} = Max (Note 10)	DM74	-20		-100	mA

Electrical Characteristics (Continued)

over recommended operating free air temperature range (unless otherwise noted)

Symbol	Parameter	Conditions	Min	Typ (Note 9)	Max	Units
I_{CC}	Supply Current	$V_{CC} = \text{Max}$ (Note 11)		15	26	mA

Note 9: All typicals are at $V_{CC} = 5V$, $T_A = 25^\circ C$.

Note 10: Not more than one output should be shorted at a time, and the duration should not exceed one second.

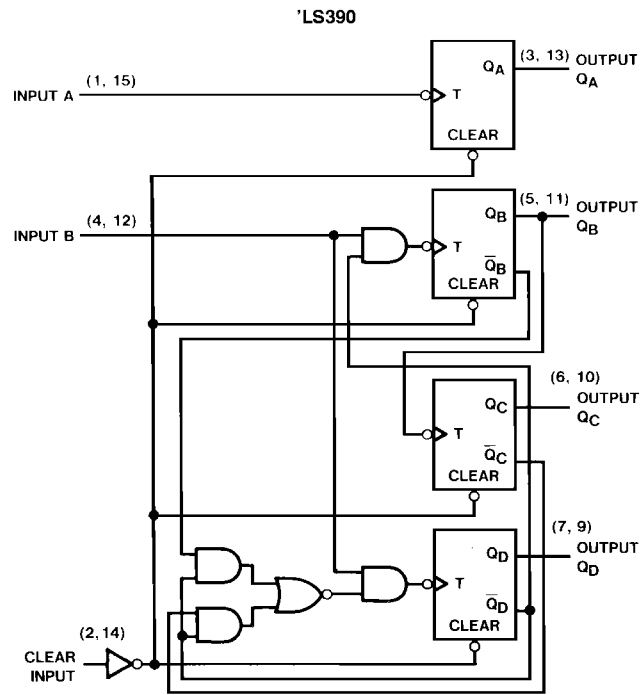
Note 11: I_{CC} is measured with all outputs open, both CLEAR inputs grounded following momentary connection to 4.5 and all other inputs grounded.

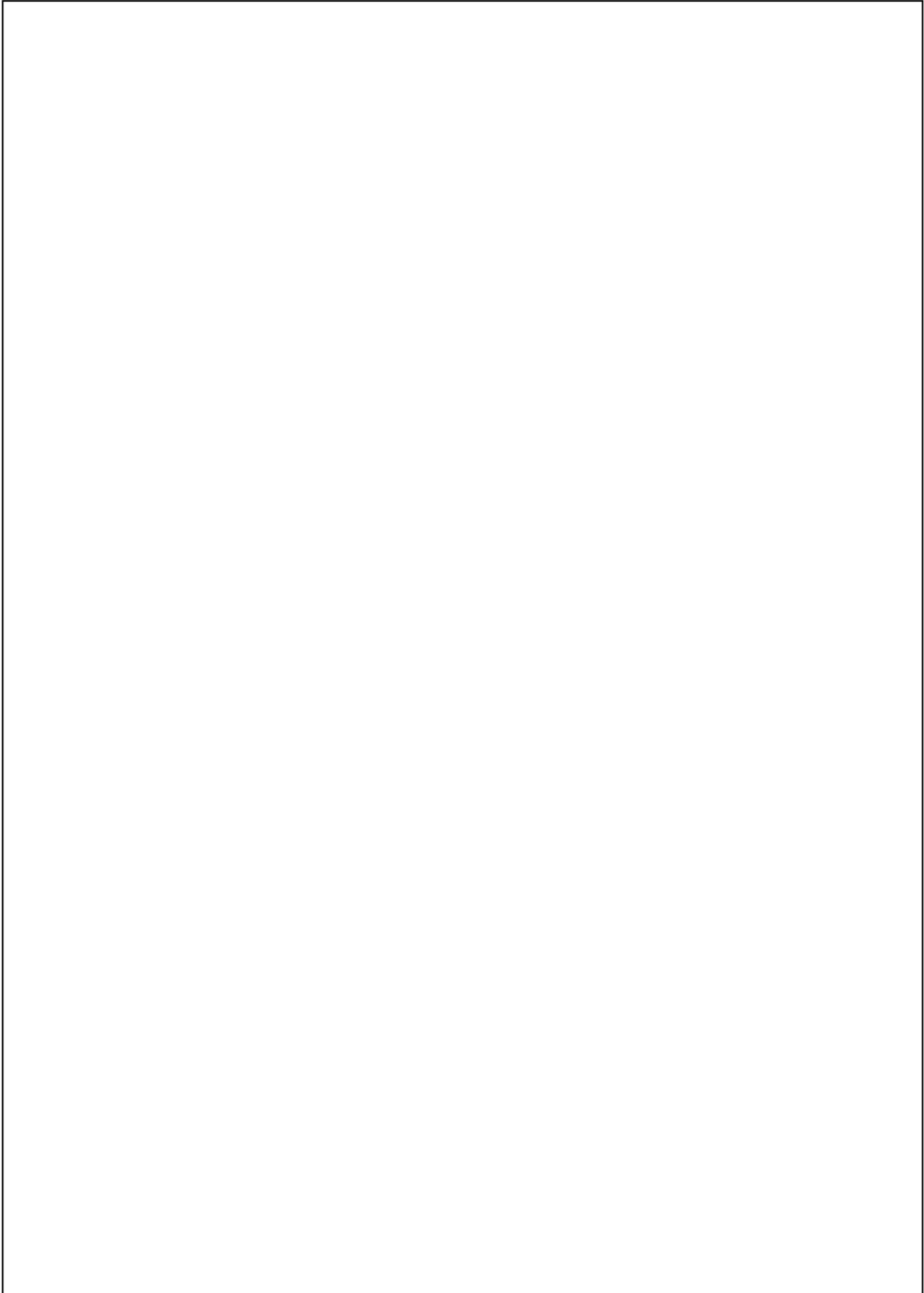
Switching Characteristics

at $V_{CC} = 5V$ and $T_A = 25^\circ C$

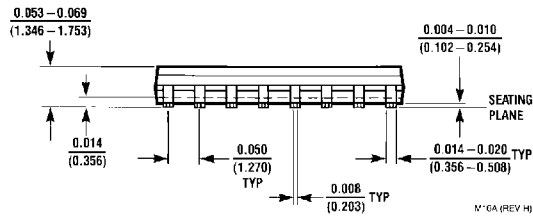
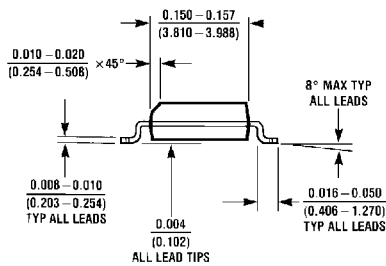
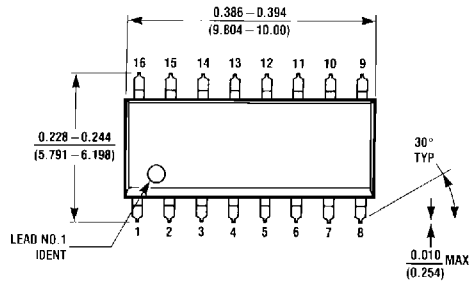
Symbol	Parameter	From (Input) To (Output)	$R_L = 2\text{ k}\Omega$				Units
			$C_L = 15\text{ pF}$		$C_L = 50\text{ pF}$		
			Min	Max	Min	Max	
f_{MAX}	Maximum Clock Frequency	A to Q_A	25		20		MHz
		B to Q_B	20		15		
t_{PLH}	Propagation Delay Time Low to High Level Output	A to Q_A		20		24	ns
t_{PHL}	Propagation Delay Time High to Low Level Output	A to Q_A		20		30	ns
t_{PLH}	Propagation Delay Time Low to High Level Output	A to Q_C		60		81	ns
t_{PHL}	Propagation Delay Time High to Low Level Output	A to Q_C		60		81	ns
t_{PLH}	Propagation Delay Time Low to High Level Output	B to Q_B		21		27	ns
t_{PHL}	Propagation Delay Time High to Low Level Output	B to Q_B		21		33	ns
t_{PLH}	Propagation Delay Time Low to High Level Output	B to Q_C		39		51	ns
t_{PHL}	Propagation Delay Time High to Low Level Output	B to Q_C		39		54	ns
t_{PLH}	Propagation Delay Time Low to High Level Output	B to Q_D		21		27	ns
t_{PHL}	Propagation Delay Time High to Low Level Output	B to Q_D		21		33	ns
t_{PHL}	Propagation Delay Time High to Low Level Output	Clear to Any Q		39		45	ns

Logic Diagram

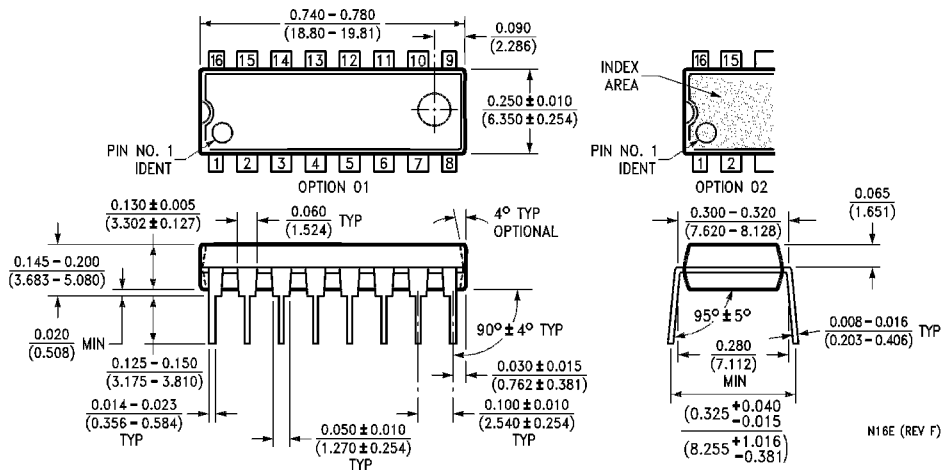




Physical Dimensions inches (millimeters) unless otherwise noted



16-Lead Small Outline Molded Package (M)
Order Number DM74LS390M
Package Number M16A



16-Lead Molded Dual-In-Line Package (N)
Order Number DM74LS390N
Package Number N16E

LIFE SUPPORT POLICY

FAIRCHILD'S PRODUCTS ARE NOT AUTHORIZED FOR USE AS CRITICAL COMPONENTS IN LIFE SUPPORT DEVICES OR SYSTEMS WITHOUT THE EXPRESS WRITTEN APPROVAL OF THE PRESIDENT OF FAIRCHILD SEMICONDUCTOR CORPORATION. As used herein:

1. Life support devices or systems are devices or systems which, (a) are intended for surgical implant into the body, or (b) support or sustain life, and (c) whose failure to perform when properly used in accordance with instructions for use provided in the labeling, can be reasonably expected to result in a significant injury to the user.
2. A critical component in any component of a life support device or system whose failure to perform can be reasonably expected to cause the failure of the life support device or system, or to affect its safety or effectiveness.

Fairchild Semiconductor Corporation Americas
Customer Response Center
Tel: 1-888-522-5372

Fairchild Semiconductor Europe
Fax: +49 (0) 1 80-530 85 86
Email: europe.support@nsc.com
Deutsch Tel: +49 (0) 8 141-35-0
English Tel: +44 (0) 1 793-85-68-56
Italy Tel: +39 (0) 2 57 5631

Fairchild Semiconductor Hong Kong Ltd.
13th Floor, Straight Block,
Ocean Centre, 5 Canton Rd.
Tsimshatsui, Kowloon
Hong Kong
Tel: +852 2737-7200
Fax: +852 2314-0061

National Semiconductor Japan Ltd.
Tel: 81-3-5620-6175
Fax: 81-3-5620-6179

www.fairchildsemi.com