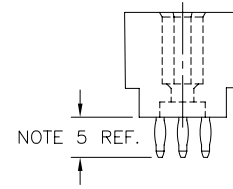
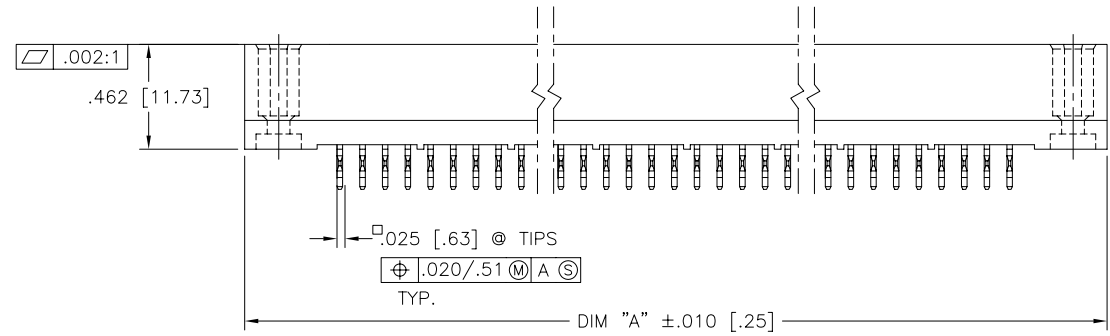
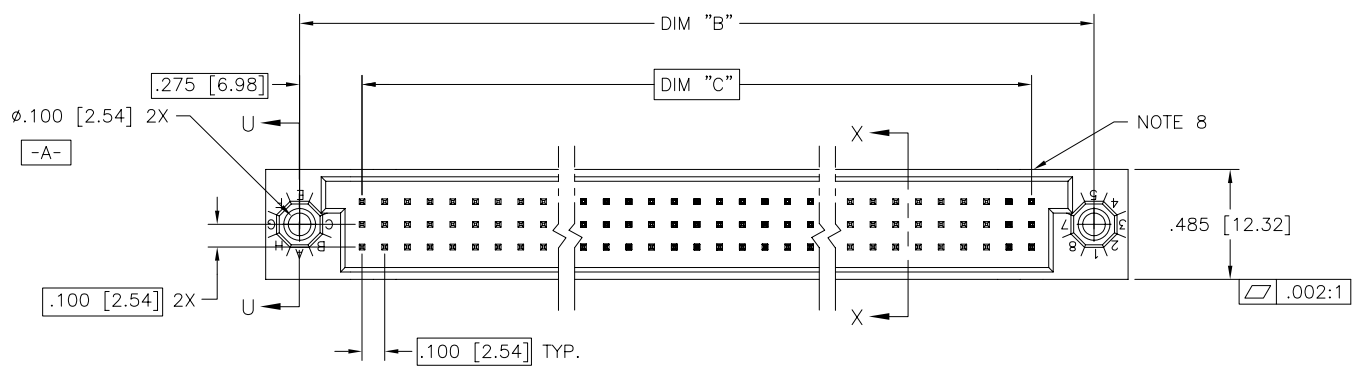


PRODUCT NUMBER  
SEE NOTE 1



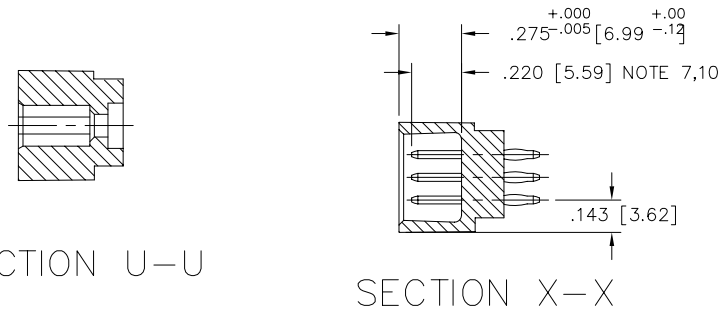
FCI  
FCIconnect.com

Copyright FCI

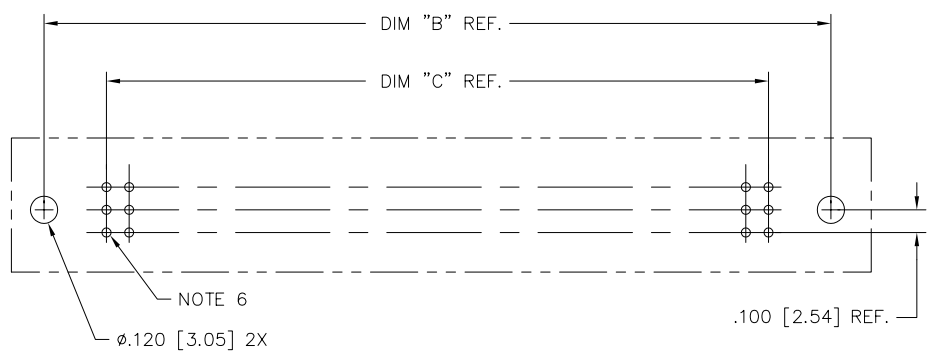
mat'l. code		surface ISO 1302 ✓		tolerance ISO 406 ISO 1101		projection INCH/MM		product family HPC		
ltr		ecn no dr		date		tolerances unless otherwise specified		title		
A	V12397	SAR	8/16/91	angles	.XX±.01/.3	linear .XXX±.005/.13		3 ROW VERTICAL HEADER		
B	V31616	SRS	10/26/93	0°±2'	.XXXX±.0020/.051	scale 1:1		HIGH DURABILITY, P.F., 0 G.P.		
C	V40678	PDP	3/29/94	dr	S. ROYER	8/16/91	FCI		dwg no	
D	V90620	HTB	3/3/99	enr	S. CLARK	9/16/91	sheet 1 of 2		size	
E	V00275	LSS	2/2/00	chr	S. CLARK	9/16/91	50202		A3	
F	M06-0255	AGS	7/8/06	appd	S. CLARK	9/16/91	type		Product Customer Drawing	
sheet index	revision sheet	F	F							
		1	2							

form: A3

PRODUCT NUMBER	DIM.	LENGTH FORMULAS
SEE NOTE 1	DIM "A"	.100/2.54 x NO. OF COLUMNS +.75/19.1
	DIM "B"	.100/2.54 x NO. OF COLUMNS +.450/11.43
	DIM "C"	.100/2.54 x NO. OF COLUMNS -.100/2.54



- NOTES:
- PRODUCT NUMBERING CODE:  
50202 - X YYY Z  
TAIL LENGTH(NOTE 5)  
NO. OF POSITIONS(NOTE 2)  
PLATING(NOTE 4)  
BASE NUMBER
  - THIS PRODUCT IS CONFIGURED IN SIZES OF 6 thru 80 COLUMNS IN INCREMENTS OF ONE.  
i.e.: 6,7,8,9,.....79,80.
  - HOUSING MATERIAL: GLASS AND MINERAL FILLED HIGH TEMP. THERMOPLASTIC FLAME RETARDANT PER UL94V-0 COLOR:BLACK  
PIN MATERIAL: PHOS BRONZE
  - PLATING CONTACT AREA OPTIONS:  
7 = 60u"/1.52u GXT
  - TAIL LENGTH OPTIONS:(±.015/.38)  
A = .177/4.5      G = .250/6.35  
C = .533/13.54    P = .470/11.94 .062 PCB/SHROUD  
D = .733/18.62    L = .188/4.78 .062 PCB
  - ∅.0453/1.151 DRILLED HOLE PLATED WITH .0003/.007 MIN. SnPb OVER .001/.03 to .003/.08 Cu. PLATING TO ACHIEVE A ∅.040±.003/1.02±.08 HOLE.
  - TO ASSURE PROPER INSTALLATION: TOOLING AS SPECIFIED IN INSTRUCTION MANUAL 155915-001 MUST BE USED. PIN MATING LENGTH WILL BE ±.002/.05 AFTER INSTALLATION.
  - MANUFACTURE'S NAME, PART NUMBER AND LOT CODE TO APPEAR ON THIS SURFACE PER BUS-12-108.
  - FOR DOCUMENTATION MENU, SEE BUS-01-057.
  - REFERENCE 50801 FOR FIRST MATE LAST BREAK MATING LENGTHS AVAILABLE AND FOR SELECTIVELY LOADED HEADER WORKSHEETS.



RECOMMENDED PCB LAYOUT  
(ALL HOLES LOCATED ON .100/2.54 GRID UNLESS OTHERWISE SPECIFIED)

mat'l. code		surface ISO 1302 ✓		tolerance ISO 406 ISO 1101		projection INCH/MM		product family HPC	
ltr		ecn no dr		date		tolerances unless otherwise specified		title	
F						.XX±.01/.3		3 ROW VERTICAL HEADER	
						linear .XXX±.005/.13		HIGH DURABILITY, P.F., 0 G.P.	
						.XXXX±.0020/.051		dwg no sheet2 of 2 size	
						scale 1:1		50202 A3	
						dr S. ROYER 8/16/91		type Product Customer Drawing	
						enrg S. CLARK 9/16/91			
						chr S. CLARK 9/16/91			
						appd S. CLARK 9/16/91			
sheet index		revision sheet							

FCI  
FCIconnect.com  
Copyright FCI