

Tous droits strictement réservés. Reproduction ou communication a des tiers interdite sous quelque forme que ce soit sans autorisation écrite du propriétaire. Propriete de c FCI. Droits de reproduction FCI.

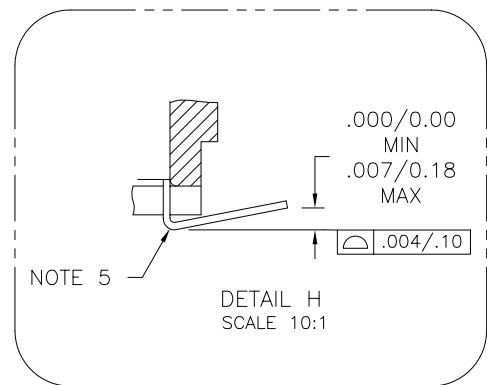
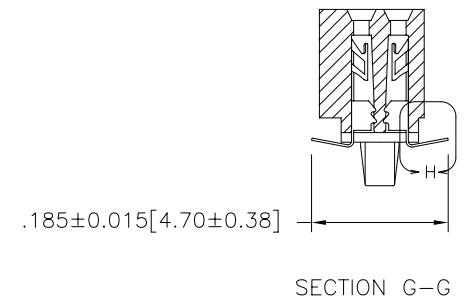
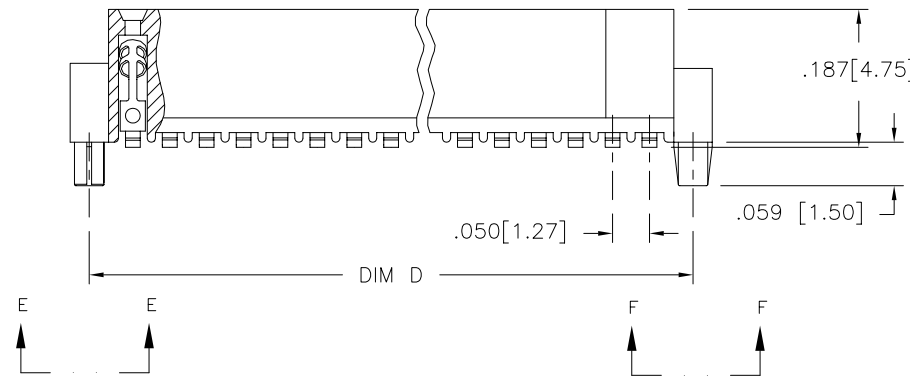
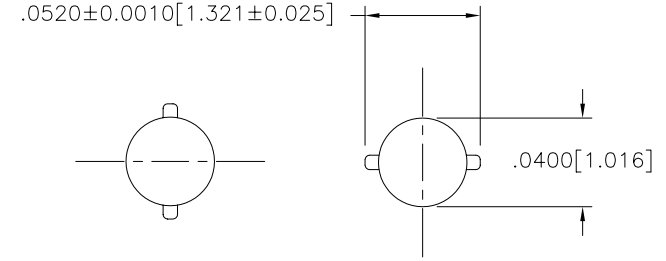
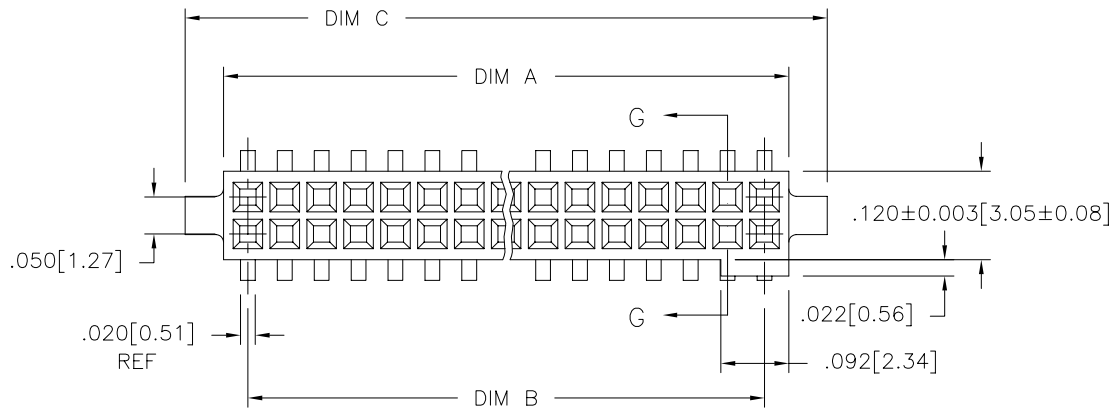
FCI

All rights strictly reserved. Reproduction or issue to third parties in any form whatever is not permitted without written authority from the proprietor. Property of FCI. Copyright FCI.

A

B

PRODUCT NUMBER
SEE TABLE



mat'l. code				tolerances unless otherwise specified			CUSTOMER COPY	 www.fciconnect.com	
ltr	ecn no	dr	date	linear	.XX ±.01/.XX±.3	projection			title
A	V81341	EPK	7/28/98		.XXX ±.005/.XX±.13		 INCH/MM	.050/1.27 cc V.C.C. SURFACE MT. W/SPECIAL HOLDDOWN	
B	V90004	GAH	1/7/99	angles	.XXX ±.0020/.XXX±.051	scale			product family RIBCAGE
C	V02780	DLW	12/1/00		0° ±2°		4:1	size/ dwg no	
D	V010994	DLW	3/9/01	dr	E.KROPIENICKI 7/28/98	A			84699
E	V11674	CRG	6/22/01	engr	D. WHITING 7/28/98		code	-	
F	M05-0123	MHT	6/06/05	chr	D. WHITING 7/28/98				
				appd	D. WHITING 7/28/98				
sheet index	revision sheet	F 1	F 2						

cage code
22526

ACAD

PDM: Rev:F

STATUS:Released

Printed: Jun 18, 2006

Tous droits strictement reserves. Reproduction ou communication a des tiers interdite sous quelque forme que ce soit sans autorisation ecrite du proprietaire. Propriete de c FCI. Droits de reproduction FCI.

A
FCI

All rights strictly reserved. Reproduction or issue to third parties in any form whatever is not permitted without written authority from the proprietor. Property of FCI. Copyright FCI.

B

1 | 2

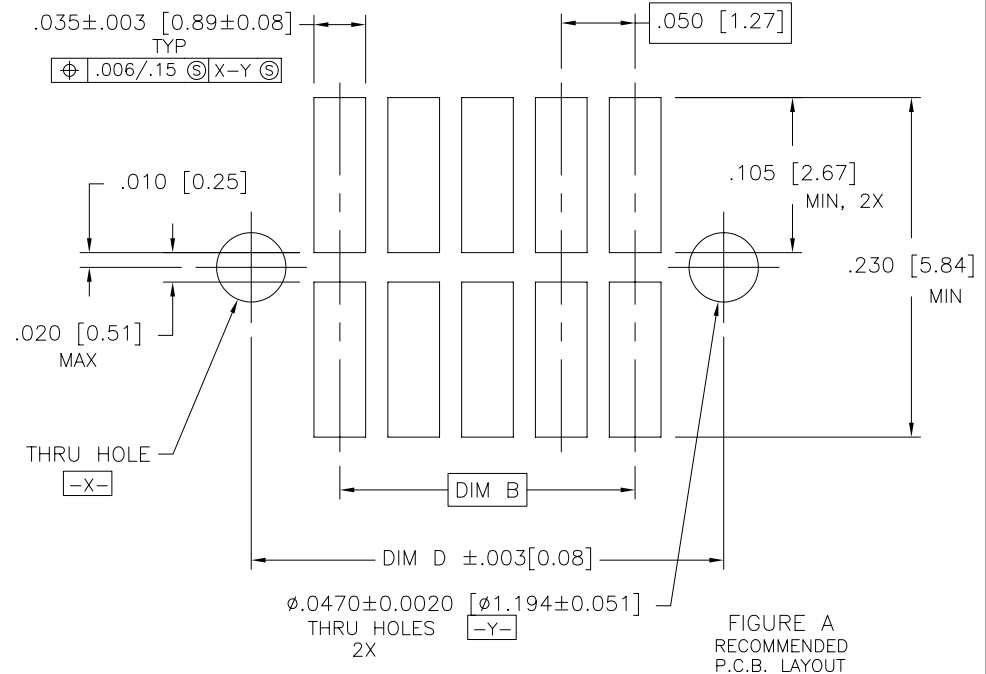
3

4

PRODUCT NO. NOTE 8	SIZE	DIM A	DIM B	DIM C	DIM D	TAPE WIDTH	PIECES PER REEL	NOTE
						PITCH		
84699-605	2 X 5	.266/6.76	.200/5.08	.370/9.40	.3200/8.128			
-610	2 X 10	.516/13.11	.450/11.43	.620/15.75	.5700/14.478			NOTE 6
-615	2 X 15	.766/19.46	.700/17.78	.870/22.10	.8200/20.828			
-620	2 X 20	1.016/25.81	.950/24.13	1.120/28.45	1.0700/27.178	44mm/12mm	500	NOTE 7
-625	2 X 25	1.266/32.16	1.200/30.48	1.370/34.80	1.3200/33.528	56mm/12mm		
-630	2 X 30	1.516/38.51	1.450/36.83	1.620/41.15	1.5700/39.878			
-635	2 X 35	1.766/44.86	1.700/43.18	1.870/47.50	1.8200/46.228			
-640	2 X 40	2.016/51.21	1.950/49.53	2.120/53.85	2.0700/52.578			
-645	2 X 45	2.266/57.56	2.200/55.88	2.370/60.20	2.3200/58.928			
84699-650	2 X 50	2.516/63.91	2.450/62.23	2.620/66.55	2.5700/65.278			

NOTES:

- ① HOUSING MATERIAL :
GLASS FILLED THERMOPLASTIC FLAME RETARDANT PER UL 94V-0
COLOR: BLACK
- ② TERMINAL MATERIAL : BeCu
- ③ TERMINAL PLATIN :
6XX .30u"/.76u MIN HARD GOLD OVER Ni ON CONTACT ZONES.
100u"/2.54u MIN TIN LEAD OVER Ni IN SOLDERING ZONES.
OTHERWISE GOLD FLASH OR UNPLATED.
LEAD FREE OPTION:
6XX .30u"/.76u MIN HARD GOLD OVER Ni ON CONTACT ZONES.
100u"/2.54u MIN TIN OVER Ni IN SOLDERING ZONES.
OTHERWISE GOLD FLASH OR UNPLATED.
4. APPLICATION INFORMATION :
 - A. RECOMMENDED MOUNTING PAD PATTERN IS SHOWN IN FIGURE "A".
 - B. MATING PINS TO BE .0176/.447 TO .0181/.459 THICK.
 - C. MATING PIN TIPS TO BE IN TRUE POSITION TO MATING GRID WITHIN .006/.15 DIA.
 - D. SUGGESTED MATING PIN LENGTH .130/3.30 ±.010/.25.
- ⑤ LEAD TIPS TO BE ABOVE HEEL UP TO .007/.18 MAX. COPLANARITY TO BE MEASURED AT LOWEST POINT (HEEL).
- ⑥ ADD "CT" TO END OF DASH NUMBER FOR CONNECTOR WITH VACUUM CAP IN TUBE.
- ⑦ ADD "TR" TO END OF DASH NUMBER FOR CONNECTOR IN TAPE AND REEL WITH CAP. TOOLED ONLY FOR NOTED CONNECTORS.
- ⑧ ADD "LF" SUFFIX AT THE END OF PART NUMBER FOR LEAD FREE OPTION.
9. IF LF P/N THE PRODUCT MEETS EUROPEAN UNION DIRECTIVES AND OTHER COUNTRY REGULATION AS DESCRIBED IN GS-22-008.
10. THE HOUSING WILL WITHSTAND EXPOSURE TO 260°C PEAK TEMPERATURE FOR 20 SECONDS IN A CONVECTION, INFRA-RED OR VAPOR PHASE REFLOW OVEN. SEE APPLICATION NOTES/PROCEDURES IF THEY ARE AVAILABLE.



mat'l. code				tolerances unless otherwise specified		CUSTOMER COPY	 www.fciconnect.com
ltr	ecn no	dr	date	linear	.XX ±.01/.X±.3		
F				angles	.XXX ±.005/.XX±.13	 INCH/MM	product family RIBCAGE size/ dwg no
				dr	.XXXX ±.0020/.XXX±.051		
				enr	0° ±2°		
				chr	D. WHITING 7/28/98		
				appd	D. WHITING 7/28/98		
sheet index	revision sheet						

1 | 2

3

4

ACAD

PDM: Rev:F

STATUS:Released

Printed: Jun 18, 2006

cage code

22526