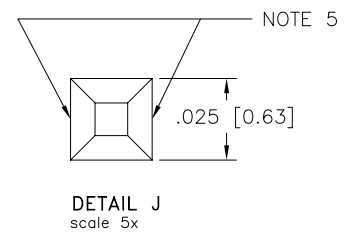
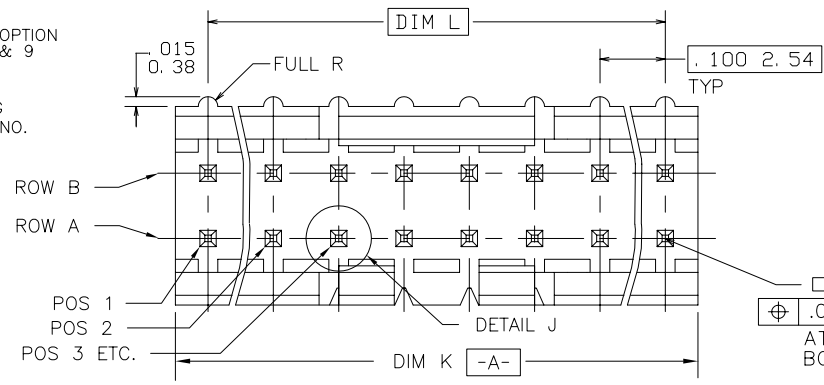
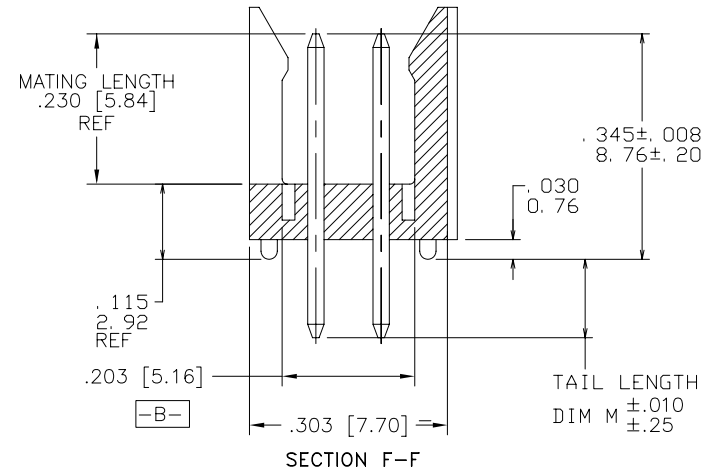
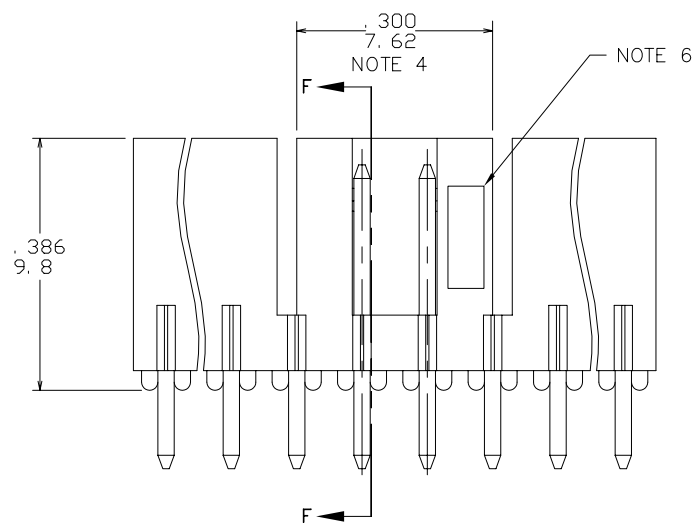


PRODUCT NUMBER
78946-XYHLF

LEAD FREE OPTION
NOTE 7, 8 & 9
NO. OF
POSITIONS
PIN PLATING
BASE PART NO.



□ .025/.64 PIN
⊕ .016/.41 (M) A (S) B (S)
AT TIP
BOTH ENDS



FCIconnect.com

Copyright FCI

mat'l. code		surface ISO 1302 ✓		tolerance ISO 406 ISO 1101		projection ⊕		product family HEADER	
ltr		ecn no		date		tolerances unless otherwise specified		title	
A	V32160	SAR	1/7/94	angles	linear	.xx±.01/0.3	INCH/MM	FRICION LATCH HEADER	
B	V50315	LSS	4/27/95			.xxx±.005/0.13		DOUBLE ROW VERTICAL	
C	V71184	HTB	9/5/97	0°±2'		.xxxx±.0020/0.051	scale 4:1	dwg no	
D	V71470	HTB	10/9/97	dr	S.ROYER	1/7/94	FCI	sheet 1 of 2 size	
E	V03-0352	GJP	03/25/03	enr	L.FYE	1/7/94		78946 A3	
F	M05-0134	ERE	06/15/05	chr	L.FYE	1/7/94		type Product Customer Drawing	
G	M06-0256	MHT	9/07/06	appd	L.FYE	1/7/94			
sheet index	revision	G	G						
	sheet	1	2						

form: A3

PRODUCT NUMBER	NO OF POS	DIM K	DIM L	TAIL LENGTH DIM M
78946-X06	2 X 3	.300/7.62	.200/5.08	.190/4.83
-X08	2 X 4	.400/10.16	.300/7.62	.190/4.83
-X10	2 X 5	.500/12.70	.400/10.16	.190/4.83
-X12	2 X 6	.600/15.24	.500/12.70	.190/4.83
-X14	2 X 7	.700/17.78	.600/15.24	.190/4.83
-X16	2 X 8	.800/20.32	.700/17.78	.190/4.83
-X18	2 X 9	.900/22.86	.800/20.32	.190/4.83
-X20	2 X 10	1.000/25.40	.900/22.86	.190/4.83
-X22	2 X 11	1.100/27.94	1.000/25.40	.190/4.83
-X24	2 X 12	1.200/30.48	1.100/27.94	.190/4.83
-X26	2 X 13	1.300/33.02	1.200/30.48	.190/4.83
-X28	2 X 14	1.400/35.56	1.300/33.02	.190/4.83
-X30	2 X 15	1.500/38.10	1.400/35.56	.190/4.83
-X32	2 X 16	U N A V A I L A B L E		
-X34	2 X 17	U N A V A I L A B L E		
-X36	2 X 18	U N A V A I L A B L E		
-X38	2 X 19	U N A V A I L A B L E		
-X40	2 X 20	U N A V A I L A B L E		
-X42	2 X 21	U N A V A I L A B L E		
-X44	2 X 22	U N A V A I L A B L E		
-X46	2 X 23	U N A V A I L A B L E		
-X48	2 X 24	U N A V A I L A B L E		
-X50	2 X 25	U N A V A I L A B L E		
-X52	2 X 26	U N A V A I L A B L E		
-X54	2 X 27	U N A V A I L A B L E		
-X56	2 X 28	U N A V A I L A B L E		
-X58	2 X 29	U N A V A I L A B L E		
-X60	2 X 30	U N A V A I L A B L E		
-X62	2 X 31	U N A V A I L A B L E		
-X64	2 X 32	U N A V A I L A B L E		
-X66	2 X 33	U N A V A I L A B L E		
-X68	2 X 34	U N A V A I L A B L E		
-X70	2 X 35	U N A V A I L A B L E		
78946-X72	2 X 36	U N A V A I L A B L E		

PIN PLATING CODES	
-1YY	30u"/.76u (SEE NOTE 10) 50u"/1.27u Ni
-2YY	15u/.38u (SEE NOTE 10) 50u"/1.27u Ni
-3YY	50u"/1.27u Au 50u"/1.27u Ni
-4YY	100u"/2.54u MIN Sn 50u"/1.27u Ni (SEE NOTE 11)
-4YYHLF	
-5YY	15u"/.38u (SEE NOTE 10) 50u"/1.27u Ni
-6YY	30u"/.76u (SEE NOTE 10) 50u"/1.27u Ni
-7YY	30u"/.76u Au OVER 50u"/1.27u Ni
-8YY	15u"/.38u Au OVER 50u"/1.27u Ni

NOTES:

- 1 MOLDING MAT'L: GLASS REINFORCED PCT, COLOR: BLACK
FLAME RETARDANT PER UL 94V-0
MAXIMUM OPERATING TEMPERATURE: 130° C
- 2 PIN MATERIAL: 3/4 HD PHOS. BRZ.
- 3 NO SLOTS ON 2 X 5 POSITION OR SMALLER PRODUCT. THE CENTER KEY SLOT WILL BE ON ALL HEADERS REGARDLESS OF SIZE.
- 4 TWO NON-CRITICAL SIDES OF PIN TIP NOT PLATED, BOTH ENDS.
- 5 COMPANY LOGO MAY APPEAR IN THIS AREA.
- 6 ROW "A" AND "B" AND POSITION NUMBERS NOT SHOWN ON PARTS.
- 7 ADD "HLF" SUFFIX AT THE END OF PART NUMBER FOR LEAD FREE OPTION, NOT AVAILABLE FOR -5YY, -5YYH, -6YY & -6YYH.
- 8 PART NUMBERS WITH "H" SUFFIX WILL WITHSTAND EXPOSURE TO 260°C PEAK TEMPERATURE FOR 20 SECONDS IN WAVE SOLDER, INFRA-RED OR VAPOR PHASE SOLDER PROCESS.

PART NUMBERS WITHOUT "H" SUFFIX WILL WITHSTAND EXPOSURE TO 260°C PEAK TEMPERATURE FOR WAVE SOLDER PROCESS.
- 9 THIS PRODUCT MEETS EUROPEAN UNION DIRECTIVES AND OTHER COUNTRY REGULATION AS DESCRIBED IN GS-22-008.
- 10 PLATING OPTIONS:
MAY BE EITHER GOLD OR GXT PLATED AT MANUFACTURER'S OPTION.
- 11 "THIS PRODUCT HAS 100% TIN PLATING IN THE INTERFACE AND HAS NOT BEEN TESTED FOR WHISKER GROWTH IN ALL INTERCONNECT ENVIRONMENTS."

FCJ
FCIconnect.com
Copyright FCI

mat'l. code		surface ISO 1302 ✓		tolerance ISO 406 ISO 1101		projection ⊕		product family HEADER	
ltr		ecn		no dr		date		title	
G								FRICION LATCH HEADER DOUBLE ROW VERTICAL	
				tolerances unless otherwise specified		INCH/MM		dwg no	
				.XX±.01/0.3		scale 4:1		sheet 2 of 2 size	
				angles linear .xxx±.005/0.13		FCJ		78946 A3	
				0'±2'				type Product Customer Drawing	
				dr S.ROYER 1/7/94					
				enr L.FYE 1/7/94					
				chr L.FYE 1/7/94					
				appd L.FYE 1/7/94					
sheet index		revision sheet							