

1136 Series

2.54 mm PIN Header

Double Row, Straight

Ordering Information

1136 - X X XX - XX S

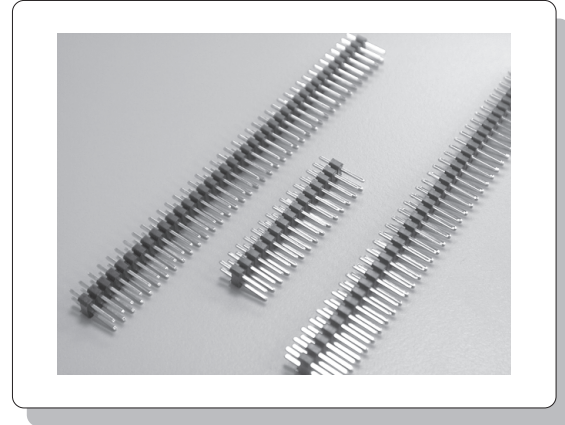
Contact Plating
 A - Gold Flash
 B - 10 μ"
 C - 15 μ"
 G - 3 μ"
 0 - Gold Flash /Tin 100 μ"
 1 - 10 μ"/Tin 100 μ"
 3 - 30 μ"/Tin 100 μ"
 4 - 3 μ"/Tin 100 μ"
 5 - 15 μ"/Tin 100 μ"
 8 - Tin 100 μ"

NO. of Contact
 2-80 position

S - Straight

PIN Type
 SEE DIM. A ,TABLE 1

Insulator Type
 0 - 2.54mm High(PBT)
 2 - HSG with Wall
 5 - Triple type (Thermoplastic)
 6 - Dual type(PBT)



Specification

Materials:

- ◆ **Insulator:** Glass Reinforced Thermoplastic UL94V-0.
- ◆ **Contact:** Copper Alloy 0.025" (0.64mm) Square PIN.
- ◆ **Plating:** Selected Glod

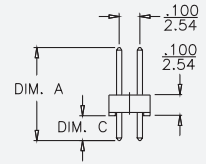
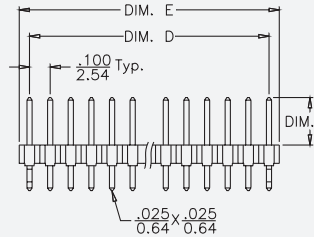
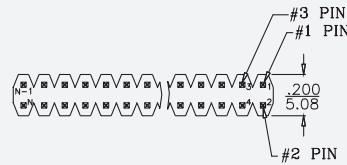
Electrical:

- ◆ **Insulation Resistance:** 5000 MΩ Minimum.
- ◆ **Voltage Rating:** 250 VAC R.M.S.
- ◆ **Dielectrical Withstanding Voltage:** 500 VAC R.M.S.
- ◆ **Current Rating:** 1 AMP.

Enviromental

- ◆ Temperature: -55°C to +125°C

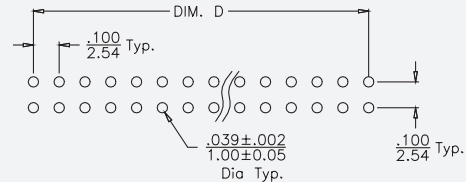
Dimensions



$$\text{DIM. D} = \frac{.100''}{2.54\text{mm}} \times \langle \text{NO. OF SPACE} \rangle$$

$$\text{DIM. E} = \text{DIM. D} + \frac{.100''}{2.54\text{mm}}$$

RECOMMENDED P.C.B. LAYOUT



PRODUCT NO.	DIM. A		DIM. B		DIM. C	
	mm	in	mm	in	mm	in
1136-X030-XXS	10.92	0.430	5.84	0.230	2.54	0.100
1136-X031-XXS	11.43	0.450	5.59	0.220	3.30	0.130
1136-X033-XXS	11.80	0.465	6.26	0.246	3.00	0.118
1136-X046-XXS	20.00	0.787	14.16	0.557	3.30	0.130
1136-X058-XXS	11.60	0.457	6.00	0.236	3.06	0.120
1136-X062-XXS	12.40	0.488	6.06	0.239	3.80	0.150