

UES1301-UES1303

3.5A HIGH EFFICIENCY RECTIFIERS

FEATURES

- Available as "HR" (high reliability) screened per MIL-PRF-19500, JANTX level. Add "HR" suffix to base part number.
- Available as non-RoHS (Sn/Pb plating), standard, and as RoHS by adding "-PBF" suffix.

MAXIMUM RATINGS

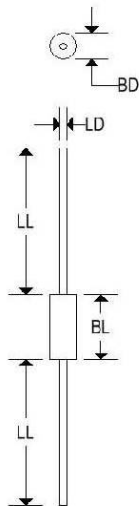
Characteristics	Symbol	UES1301	UES1302	UES1303
Peak inverse voltage	V_R	50V	100V	150V
Maximum average DC output at $T_L = 75^\circ\text{C}$, $L = \%$	I_O	6.0A		
Non-repetitive surge current at 8.3ms	I_{FSM}	125A		
Thermal resistance at $L = \%$	$R_{\theta JC}$	20°C/W		
Junction operating temperature	T_J	175°C		
Operating and storage temperature range	T_J, T_{stg}	-55° to +175°C		

ELECTRICAL CHARACTERISTICS

Part number	Peak inverse voltage	Maximum forward voltage drop		Maximum leakage current		Maximum reverse recovery time
		$T_J = 25^\circ\text{C}$	$T_J = 100^\circ\text{C}$	$T_J = 25^\circ\text{C}$	$T_J = 100^\circ\text{C}$	$I_F = 0.5\text{A}$ $I_R = 1.0\text{A}$ $I_{REC} = 0.25\text{A}$
UES1301	50V	0.925V @ 6A	0.850V @ 6A	5 μA	150 μA	30ns
UES1302	100V					
UES1303	150V					

MECHANICAL CHARACTERISTICS

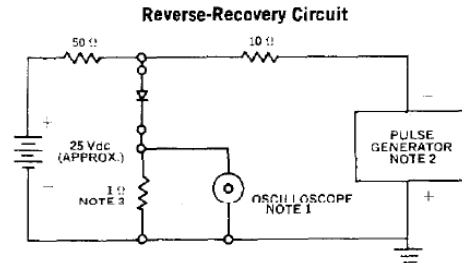
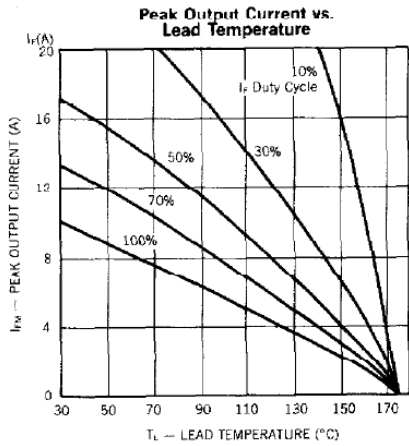
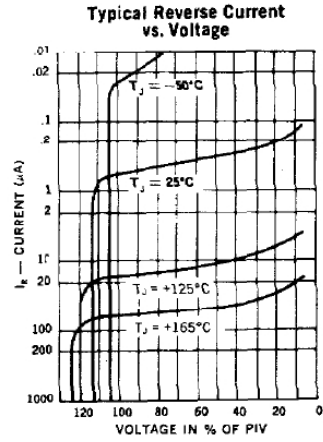
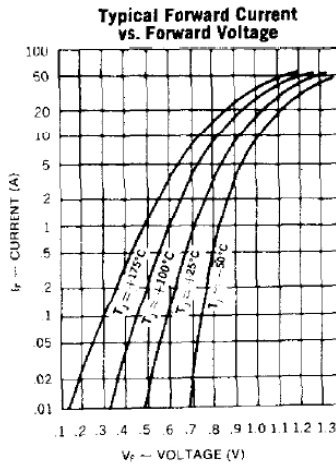
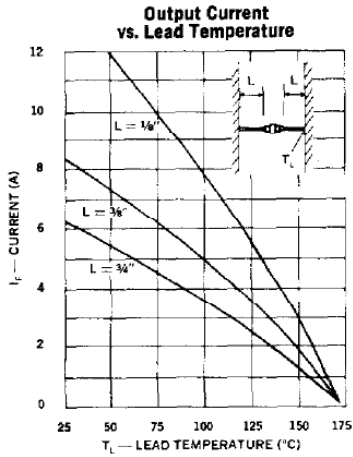
Case:	Digi B
Marking:	Alpha-Numeric
Polarity:	Cathode Band



	DIGI B			
	Inches		Millimeters	
	Min	Max	Min	Max
BD	-	0.145	-	3.680
BL	-	0.300	-	7.620
LD	0.037	0.043	0.940	1.092
LL	0.975	-	24.800	-

UES1301-UES1303

3.5A HIGH EFFICIENCY RECTIFIERS



- NOTES:**
- Oscilloscope: Rise time ≤ 3 nS; input impedance = 50 Ω .
 - Pulse Generator: Rise time ≤ 8 nS; source impedance 10 Ω .
 - Current viewing resistor, non-inductive, coaxial recommended.

