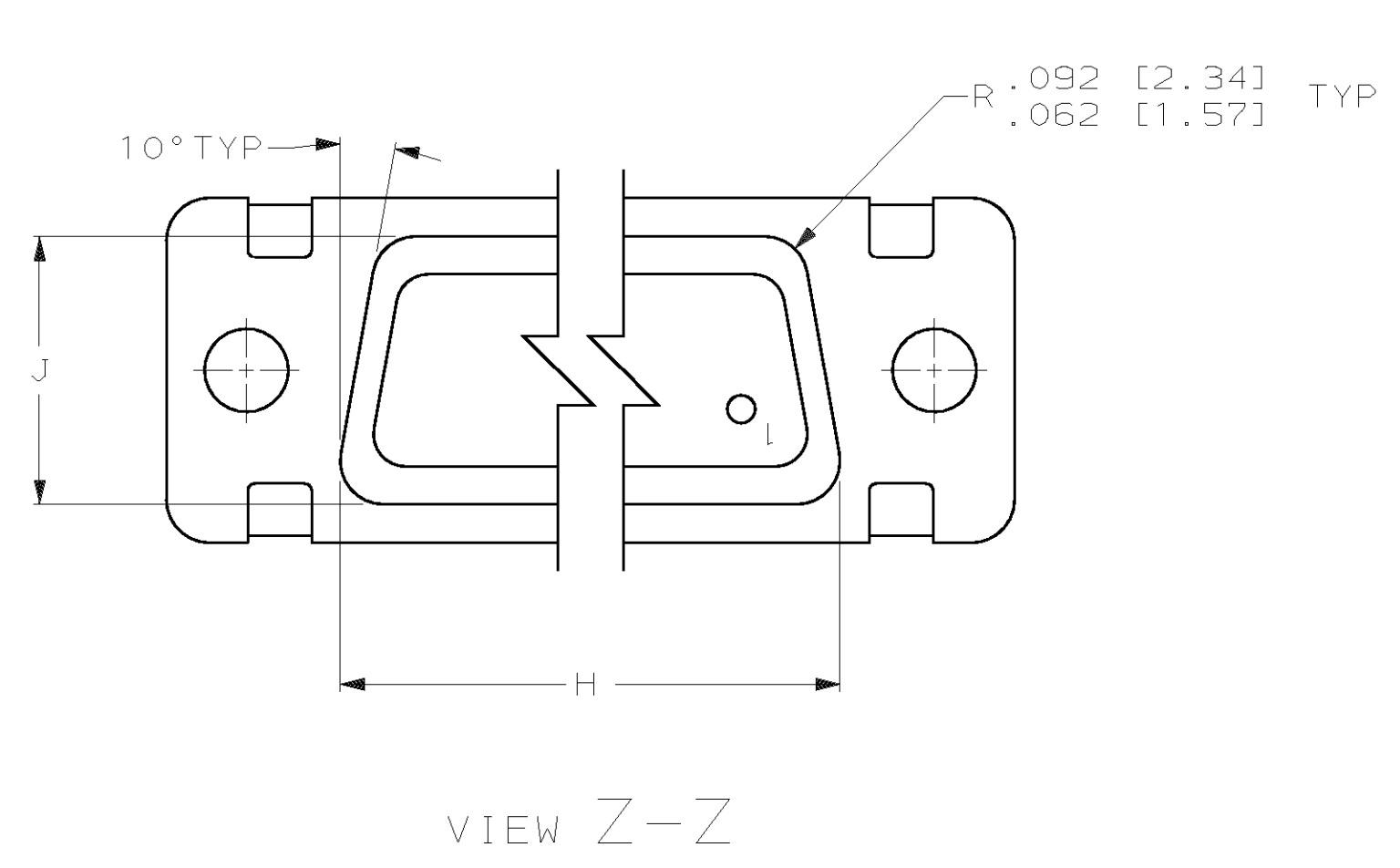
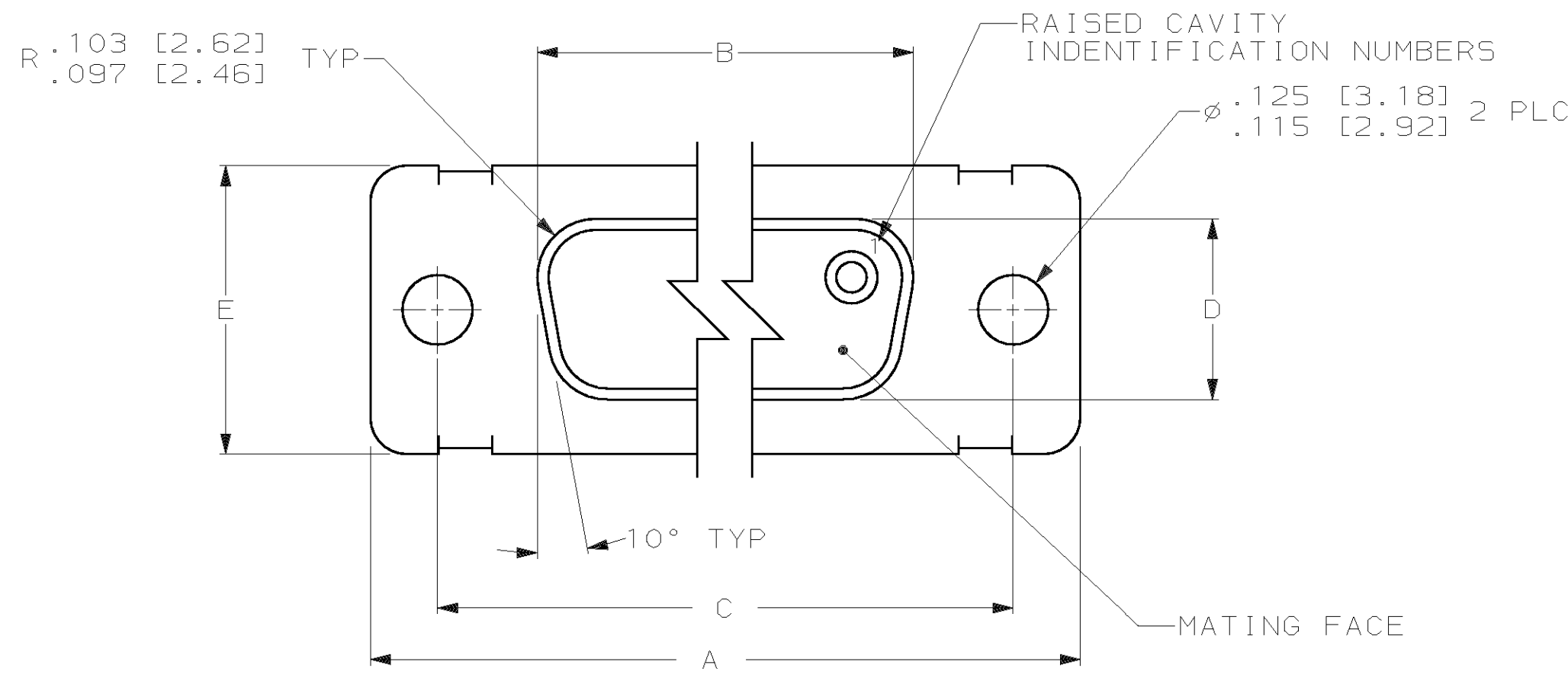
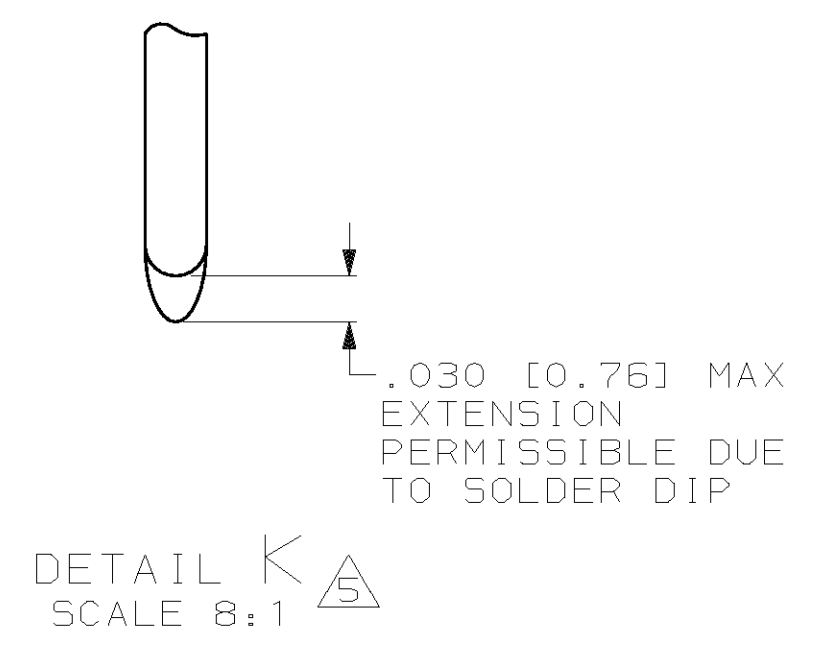
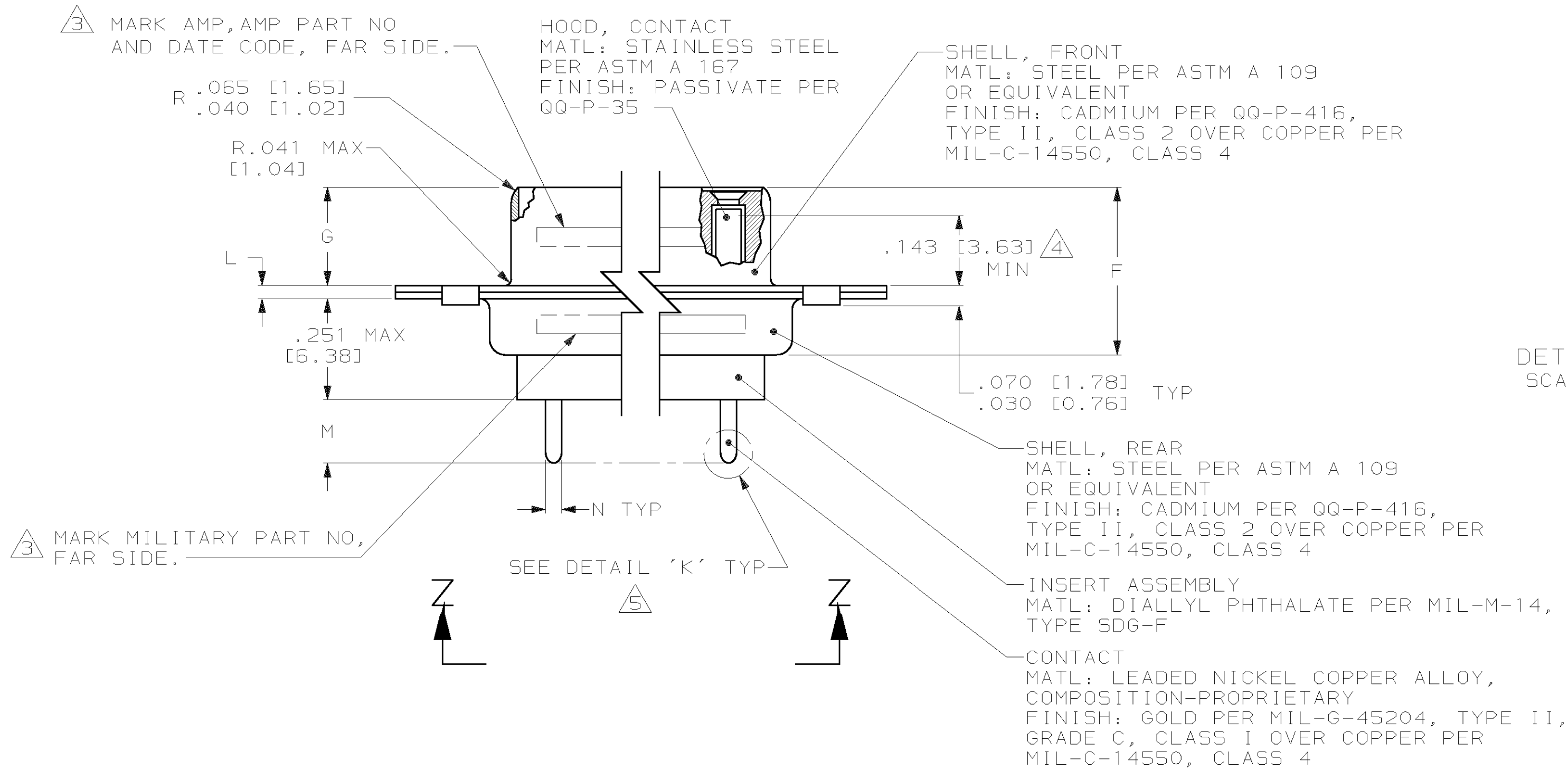


REVISED		DATE		BY		DESCRIPTION	
LOC	DIST	P	F	ZONE	LTR	DATE	APPD
DF	DO			C		1-01	CB
REVISIONS							
DESCRIPTION							
DATE							
APPD							



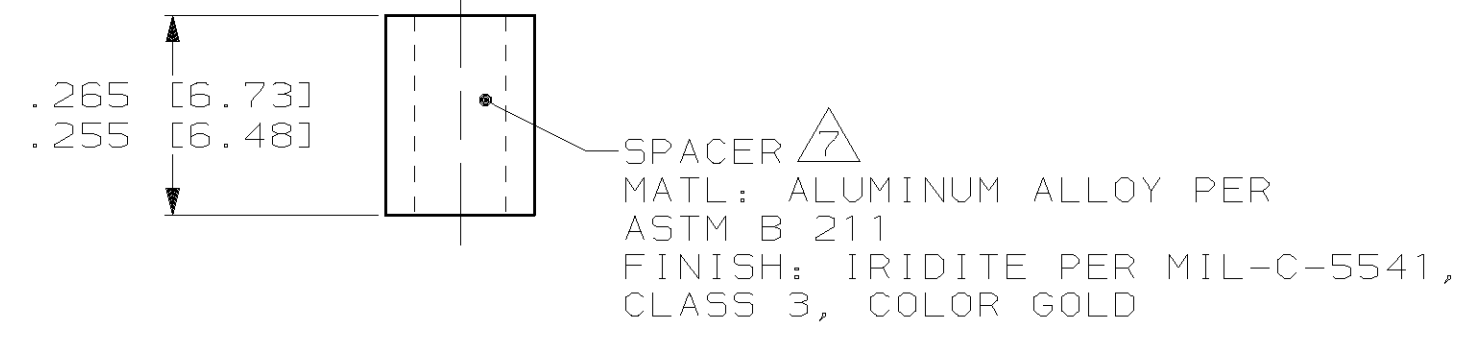
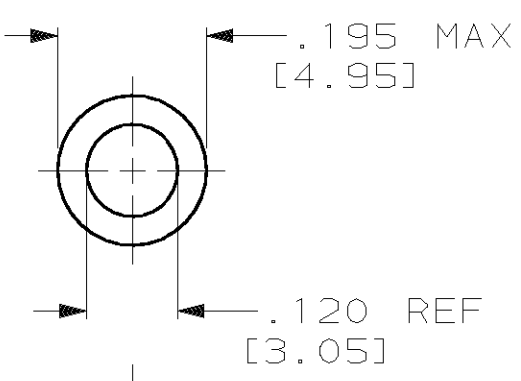
- SEE SHEET 2 FOR RECOMMENDED P.C. BOARD LAYOUT. TRUE POSITION TOLERANCE FOR P.C. BOARD LAYOUT IS .010 [0.25] AT MAX MATERIAL CONDITION. SUGGESTED BOARD THICKNESS IS .094 [2.39]
- THE CONNECTORS DESCRIBED IN THIS DOCUMENT MEET THE REQUIREMENTS OF MIL-C-24308 AND MATE WITH ANY PLUG CONNECTOR WITH SAME INSERT ARRANGEMENT.
- MARK WITH .047 [1.19]-.062 [1.57] HIGH CHARACTERS. FAR SIDE REFERS TO THE WIDE SIDE OF THE KEYSTONE. NEAR SIDE REFERS TO THE NARROW SIDE OF THE KEYSTONE. IF THE REAR SHELL IS TOO SMALL FOR THE ENTIRE MILITARY PART NUMBER, MARKING SHALL BE LOCATED AS FOLLOWS:
  - "M24308" ON FRONT SHELL, FAR SIDE.
  - SLASH SHEET AND DASH NUMBER ON REAR SHELL, FAR SIDE.
  - "AMP" AND DATE CODE ON FRONT SHELL, NEAR SIDE.
  - AMP PART NUMBER ON REAR SHELL, NEAR SIDE.
 IF THE FRONT SHELL IS TOO SMALL FOR "AMP", AMP PART NUMBER AND DATE CODE, THEN SPLIT AS FOLLOWS:
  - AMP PART NUMBER ON REAR SHELL, NEAR SIDE.
  - "AMP" AND DATE CODE ON FRONT SHELL, NEAR SIDE.
  - MILITARY PART NUMBER ON REAR SHELL, FAR SIDE.



- POINT OF ELECTRICAL ENGAGEMENT - AS MEASURED WITH A .0390 [0.991]-.0393 [0.998] DIA SQUARE ENDED TEST PIN.
- SOLDER DIP PER MIL-STD-2000 COMPOSITION Sn63 CONFORMING TO QQ-S-571. COVERAGE SHALL BE COMPLETE TO A DISTANCE .020 [0.51] MAX FROM INSERT ASSEMBLY.
- THE SOLDER DIP PROCESS IS PERFORMED SUBSEQUENT TO THE COMPLETION OF PRODUCTION OF THE MILITARY QUALIFIED CONNECTOR. DIMENSIONS APPLY PRIOR TO SOLDER DIPPING.
- SPACERS (QTY 2) ARE SUPPLIED WITH CONNECTORS (NOT ATTACHED TO THE CONNECTOR).
- DIMENSIONS AND TOLERANCES PER ANSI Y14.5M-1982.
- THIS DRAWING SHALL BE INTERPRETED IN ACCORDANCE WITH APPLICABLE STANDARDS LISTED IN MIL-STD-100.

**SUPERSEDED - SEE TABLE**

N	M	L	J	H	G	F	E	D	C	B	A	INSERT ARRANGEMENT	NO OF POS	SHELL SIZE	MILITARY P/N ON CONNECTOR	AMP P/N ON CONNECTOR	PART NUMBER
.043 [1.09] .037 [0.94]	.176 [4.47] .136 [3.45]	.040 [1.02] .020 [0.51]	.544 [13.82] .524 [13.31]	2.188 [55.58] 2.168 [55.07]	.248 [6.30] .238 [6.05]	.439 [11.15] .419 [10.64]	.620 [15.75] .590 [14.99]	.428 [10.87] .418 [10.62]	2.411 [61.24] 2.401 [60.99]	2.069 [52.55] 2.059 [52.30]	2.650 [67.31] 2.620 [66.55]	MS18277-1	50	5	M24308/23-17F	593073-5	1-593073-0
			.432 [10.97] .412 [10.46]	1.635 [41.53] 1.615 [41.02]			2.505 [63.63] 2.495 [63.37]	2.164 [54.97] 2.154 [54.71]	2.744 [69.70] 2.714 [68.94]	MS18276-1	37	4	M24308/23-16F	593073-4	593073-9		
.043 [1.09] .037 [0.94]	.176 [4.47] .136 [3.45]	.040 [1.02] .020 [0.51]	.544 [13.82] .524 [13.31]	2.188 [55.58] 2.168 [55.07]	.248 [6.30] .238 [6.05]	.439 [11.15] .419 [10.64]	.509 [12.93] .479 [12.17]	.316 [8.03] .306 [7.77]	1.857 [47.17] 1.847 [46.91]	1.516 [38.51] 1.506 [38.25]	2.103 [53.42] 2.073 [52.65]	MS18275-1	25	3	M24308/23-15F	593073-3	593073-8
			.432 [10.97] .412 [10.46]	1.635 [41.53] 1.615 [41.02]			1.317 [33.45] 1.307 [33.20]	.976 [24.79] .966 [24.54]	1.556 [39.52] 1.526 [38.76]	MS18274-1	15	2	M24308/23-14F	593073-2	593073-7		
.043 [1.09] .037 [0.94]	.176 [4.47] .136 [3.45]	.040 [1.02] .020 [0.51]	.544 [13.82] .524 [13.31]	2.188 [55.58] 2.168 [55.07]	.248 [6.30] .238 [6.05]	.439 [11.15] .419 [10.64]	.620 [15.75] .590 [14.99]	.428 [10.87] .418 [10.62]	2.411 [61.24] 2.401 [60.99]	2.069 [52.55] 2.059 [52.30]	2.650 [67.31] 2.620 [66.55]	MS18277-1	50	5	M24308/23-17F	593073-5	593073-5
			.432 [10.97] .412 [10.46]	1.635 [41.53] 1.615 [41.02]			2.505 [63.63] 2.495 [63.37]	2.164 [54.97] 2.154 [54.71]	2.744 [69.70] 2.714 [68.94]	MS18276-1	37	4	M24308/23-16F	593073-4	593073-4		
.043 [1.09] .037 [0.94]	.176 [4.47] .136 [3.45]	.040 [1.02] .020 [0.51]	.544 [13.82] .524 [13.31]	2.188 [55.58] 2.168 [55.07]	.248 [6.30] .238 [6.05]	.439 [11.15] .419 [10.64]	.509 [12.93] .479 [12.17]	.316 [8.03] .306 [7.77]	1.847 [46.91] 1.837 [46.65]	1.506 [38.25] 1.496 [38.00]	2.073 [52.65] 2.043 [51.89]	MS18275-1	25	3	M24308/23-15F	593073-3	593073-3
			.432 [10.97] .412 [10.46]	1.635 [41.53] 1.615 [41.02]			1.317 [33.45] 1.307 [33.20]	.976 [24.79] .966 [24.54]	1.556 [39.52] 1.526 [38.76]	MS18274-1	15	2	M24308/23-14F	593073-2	593073-2		
.043 [1.09] .037 [0.94]	.176 [4.47] .136 [3.45]	.040 [1.02] .020 [0.51]	.544 [13.82] .524 [13.31]	2.188 [55.58] 2.168 [55.07]	.248 [6.30] .238 [6.05]	.439 [11.15] .419 [10.64]	.620 [15.75] .590 [14.99]	.428 [10.87] .418 [10.62]	2.411 [61.24] 2.401 [60.99]	2.069 [52.55] 2.059 [52.30]	2.650 [67.31] 2.620 [66.55]	MS18277-1	50	5	M24308/23-17F	593073-5	593073-5
			.432 [10.97] .412 [10.46]	1.635 [41.53] 1.615 [41.02]			2.505 [63.63] 2.495 [63.37]	2.164 [54.97] 2.154 [54.71]	2.744 [69.70] 2.714 [68.94]	MS18276-1	37	4	M24308/23-16F	593073-4	593073-4		
.043 [1.09] .037 [0.94]	.176 [4.47] .136 [3.45]	.040 [1.02] .020 [0.51]	.544 [13.82] .524 [13.31]	2.188 [55.58] 2.168 [55.07]	.248 [6.30] .238 [6.05]	.439 [11.15] .419 [10.64]	.509 [12.93] .479 [12.17]	.316 [8.03] .306 [7.77]	1.847 [46.91] 1.837 [46.65]	1.506 [38.25] 1.496 [38.00]	2.073 [52.65] 2.043 [51.89]	MS18275-1	25	3	M24308/23-15F	593073-3	593073-3
			.432 [10.97] .412 [10.46]	1.635 [41.53] 1.615 [41.02]			1.317 [33.45] 1.307 [33.20]	.976 [24.79] .966 [24.54]	1.556 [39.52] 1.526 [38.76]	MS18274-1	15	2	M24308/23-14F	593073-2	593073-2		
.043 [1.09] .037 [0.94]	.176 [4.47] .136 [3.45]	.040 [1.02] .020 [0.51]	.544 [13.82] .524 [13.31]	2.188 [55.58] 2.168 [55.07]	.248 [6.30] .238 [6.05]	.439 [11.15] .419 [10.64]	.620 [15.75] .590 [14.99]	.428 [10.87] .418 [10.62]	2.411 [61.24] 2.401 [60.99]	2.069 [52.55] 2.059 [52.30]	2.650 [67.31] 2.620 [66.55]	MS18277-1	50	5	M24308/23-17F	593073-5	593073-5
			.432 [10.97] .412 [10.46]	1.635 [41.53] 1.615 [41.02]			2.505 [63.63] 2.495 [63.37]	2.164 [54.97] 2.154 [54.71]	2.744 [69.70] 2.714 [68.94]	MS18276-1	37	4	M24308/23-16F	593073-4	593073-4		
.043 [1.09] .037 [0.94]	.176 [4.47] .136 [3.45]	.040 [1.02] .020 [0.51]	.544 [13.82] .524 [13.31]	2.188 [55.58] 2.168 [55.07]	.248 [6.30] .238 [6.05]	.439 [11.15] .419 [10.64]	.509 [12.93] .479 [12.17]	.316 [8.03] .306 [7.77]	1.847 [46.91] 1.837 [46.65]	1.506 [38.25] 1.496 [38.00]	2.073 [52.65] 2.043 [51.89]	MS18275-1	25	3	M24308/23-15F	593073-3	593073-3
			.432 [10.97] .412 [10.46]	1.635 [41.53] 1.615 [41.02]			1.317 [33.45] 1.307 [33.20]	.976 [24.79] .966 [24.54]	1.556 [39.52] 1.526 [38.76]	MS18274-1	15	2	M24308/23-14F	593073-2	593073-2		
.043 [1.09] .037 [0.94]	.176 [4.47] .136 [3.45]	.040 [1.02] .020 [0.51]	.544 [13.82] .524 [13.31]	2.188 [55.58] 2.168 [55.07]	.248 [6.30] .238 [6.05]	.439 [11.15] .419 [10.64]	.620 [15.75] .590 [14.99]	.428 [10.87] .418 [10.62]	2.411 [61.24] 2.401 [60.99]	2.069 [52.55] 2.059 [52.30]	2.650 [67.31] 2.620 [66.55]	MS18277-1	50	5	M24308/23-17F	593073-5	593073-5
			.432 [10.97] .412 [10.46]	1.635 [41.53] 1.615 [41.02]			2.505 [63.63] 2.495 [63.37]	2.164 [54.97] 2.154 [54.71]	2.744 [69.70] 2.714 [68.94]	MS18276-1	37	4	M24308/23-16F	593073-4	593073-4		
.043 [1.09] .037 [0.94]	.176 [4.47] .136 [3.45]	.040 [1.02] .020 [0.51]	.544 [13.82] .524 [13.31]	2.188 [55.58] 2.168 [55.07]	.248 [6.30] .238 [6.05]	.439 [11.15] .419 [10.64]	.509 [12.93] .479 [12.17]	.316 [8.03] .306 [7.77]	1.847 [46.91] 1.837 [46.65]	1.506 [38.25] 1.496 [38.00]	2.073 [52.65] 2.043 [51.89]	MS18275-1	25	3	M24308/23-15F	593073-3	593073-3
			.432 [10.97] .412 [10.46]	1.635 [41.53] 1.615 [41.02]			1.317 [33.45] 1.307 [33.20]	.976 [24.79] .966 [24.54]	1.556 [39.52] 1.526 [38.76]	MS18274-1	15	2	M24308/23-14F	593073-2	593073-2		
.043 [1.09] .037 [0.94]	.176 [4.47] .136 [3.45]	.040 [1.02] .020 [0.51]	.544 [13.82] .524 [13.31]	2.188 [55.58] 2.168 [55.07]	.248 [6.30] .238 [6.05]	.439 [11.15] .419 [10.64]	.620 [15.75] .590 [14.99]	.428 [10.87] .418 [10.62]	2.411 [61.24] 2.401 [60.99]	2.069 [52.55] 2.059 [52.30]	2.650 [67.31] 2.620 [66.55]	MS18277-1	50	5	M24308/23-17F	593073-5	593073-5
			.432 [10.97] .412 [10.46]	1.635 [41.53] 1.615 [41.02]			2.505 [63.63] 2.495 [63.37]	2.164 [54.97] 2.154 [54.71]	2.744 [69.70] 2.714 [68.94]	MS18276-1	37	4	M24308/23-16F	593073-4	593073-4		
.043 [1.09] .037 [0.94]	.176 [4.47] .136 [3.45]	.040 [1.02] .020 [0.51]	.544 [13.82] .524 [13.31]	2.188 [55.58] 2.168 [55.07]	.248 [6.30] .238 [6.05]	.439 [11.15] .419 [10.64]	.509 [12.93] .479 [12.17]	.316 [8.03] .306 [7.77]	1.847 [46.91] 1.837 [46.65]	1.506 [38.25] 1.496 [38.00]	2.073 [52.65] 2.043 [51.89]	MS18275-1	25	3	M24308/23-15F	593073-3	593073-3
			.432 [10.97] .412 [10.46]	1.635 [41.53] 1.615 [41.02]			1.317 [33.45] 1.307 [33.20]	.976 [24.79] .966 [24.54]	1.556 [39.52] 1.526 [38.76]	MS18274-1	15	2	M24308/23-14F	593073-2	593073-2		



REMARKS	PART NUMBER
SUPERSEDED BY 1-443977-0	1-593073-0
SUPERSEDED BY 443977-9	593073-9
SUPERSEDED BY 443977-8	593073-8
SUPERSEDED BY 443977-7	593073-7
SUPERSEDED BY 443977-6	593073-6

REMARKS	PART NUMBER
SUPERSEDED BY 443977-5	593073-5
SUPERSEDED BY 443977-4	593073-4
SUPERSEDED BY 443977-3	593073-3
SUPERSEDED BY 443977-2	593073-2
SUPERSEDED BY 443977-1	593073-1

DO NOT SCALE PRINT. UNLESS SPECIFIED DIMENSIONS IN INCHES [mm] TOLERANCES ON:

2 PLC DEC ±	-.0005 [0.0127]
3 PLC DEC ±	-.0008 [0.0203]
ANGLES	± 1°

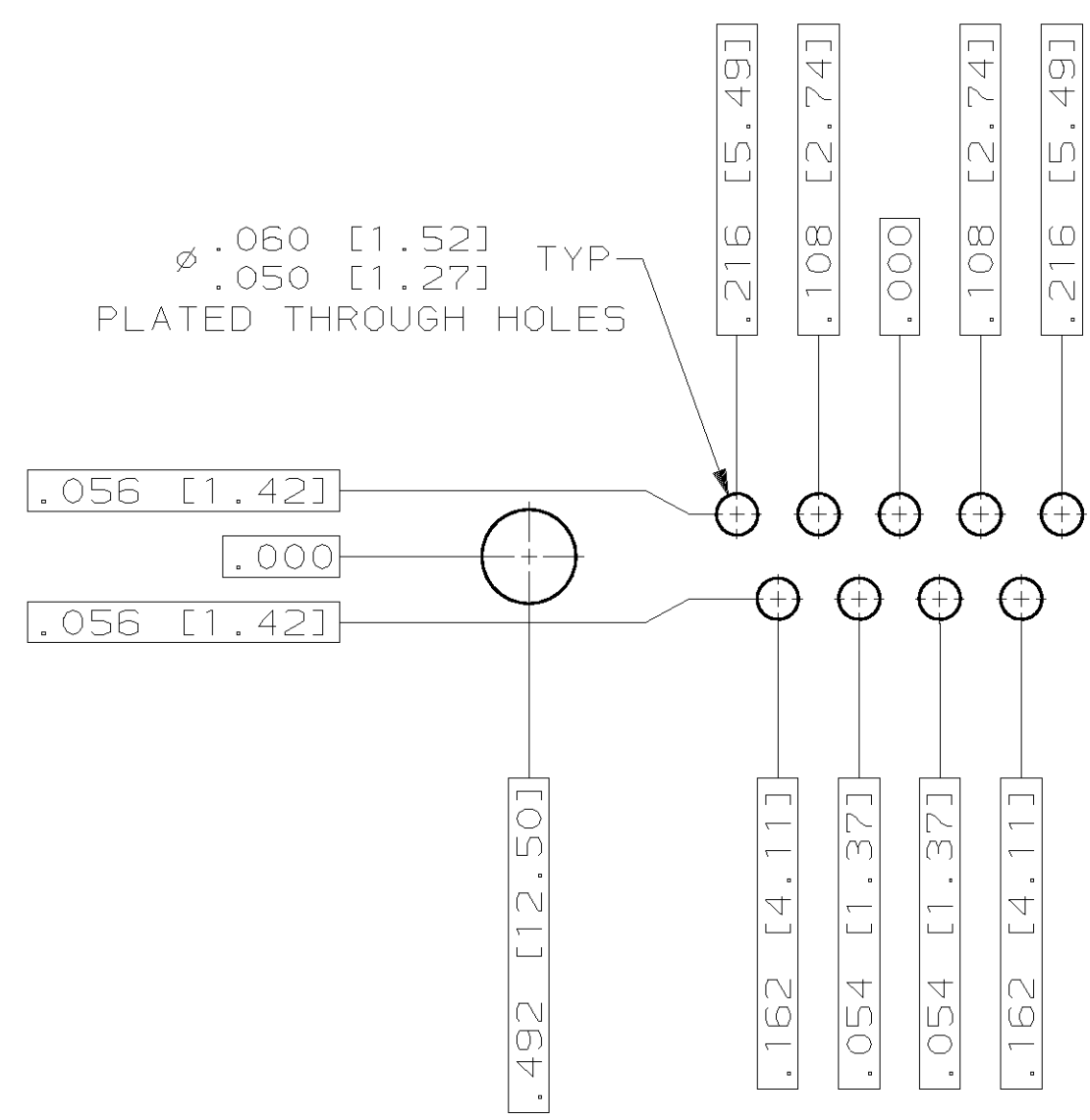
AMP INCORPORATED  
 Harrisburg, Pa. 17105

NAME: AMPLIMITE RECEPTACLE ASSY WITH SIZE 20 STRAIGHT POSTED P.C. BOARD CONTACTS, SERIES 109, SHELL SIZES 1 THRU 5

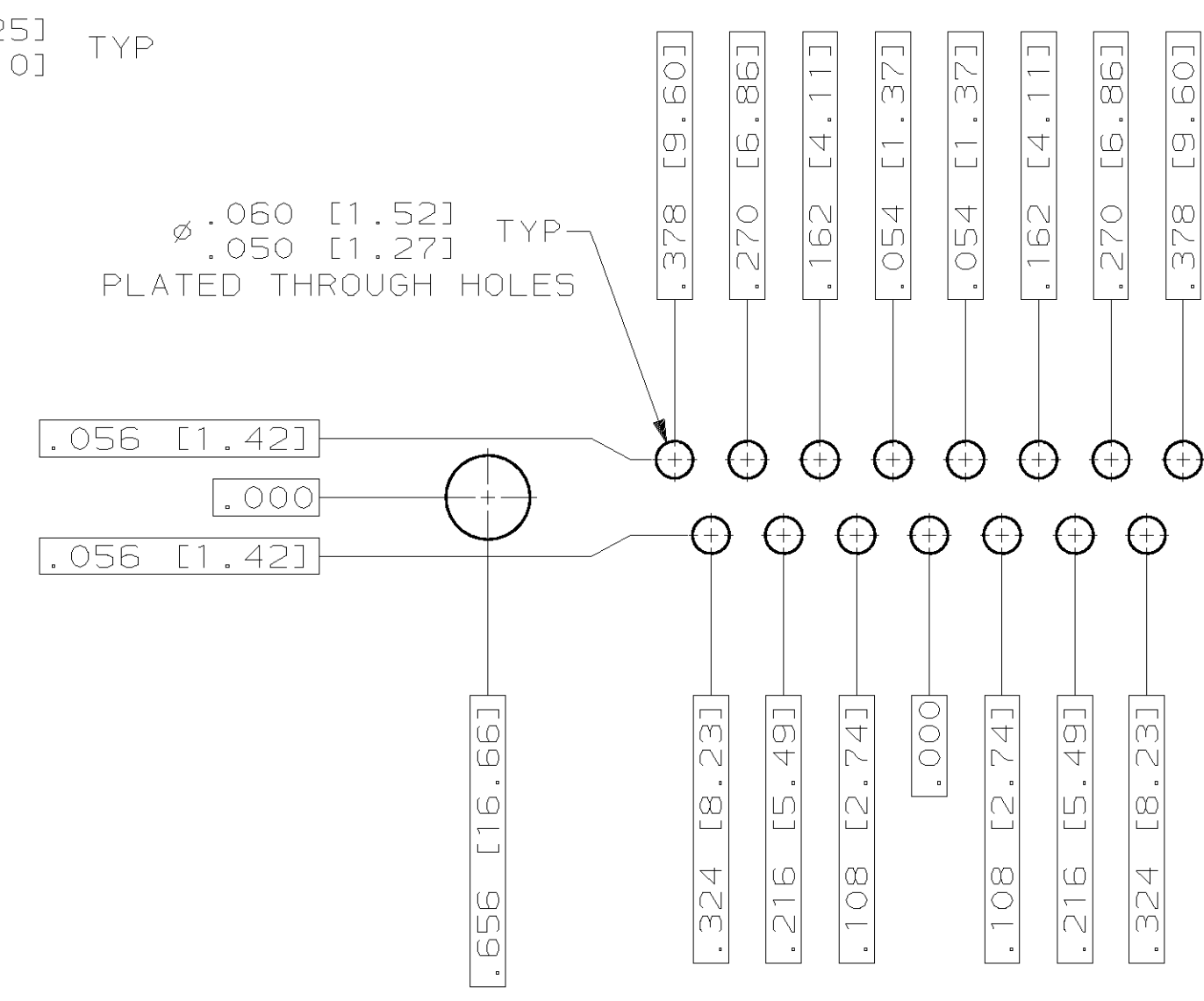
SIZE: **D** FSCM NO: 00779 DRAWING NO: 593073

SCALE: 4:1 SHEET: 1 of 2

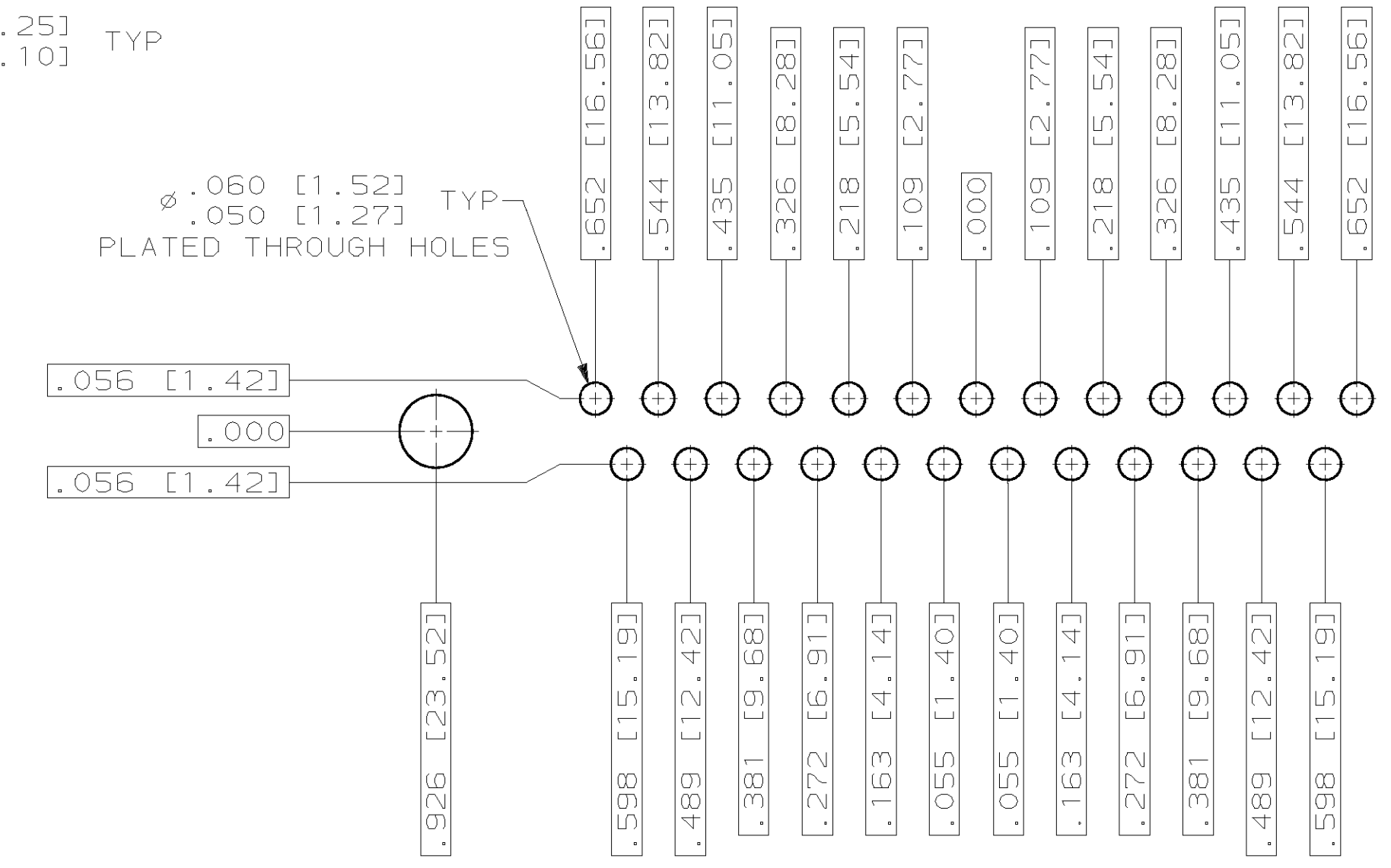
REVOLUTIONS		REVISIONS			
LOC	DIST	DATE	DESCRIPTION	DATE	APPR
DF	DO		SEE SHEET 1		



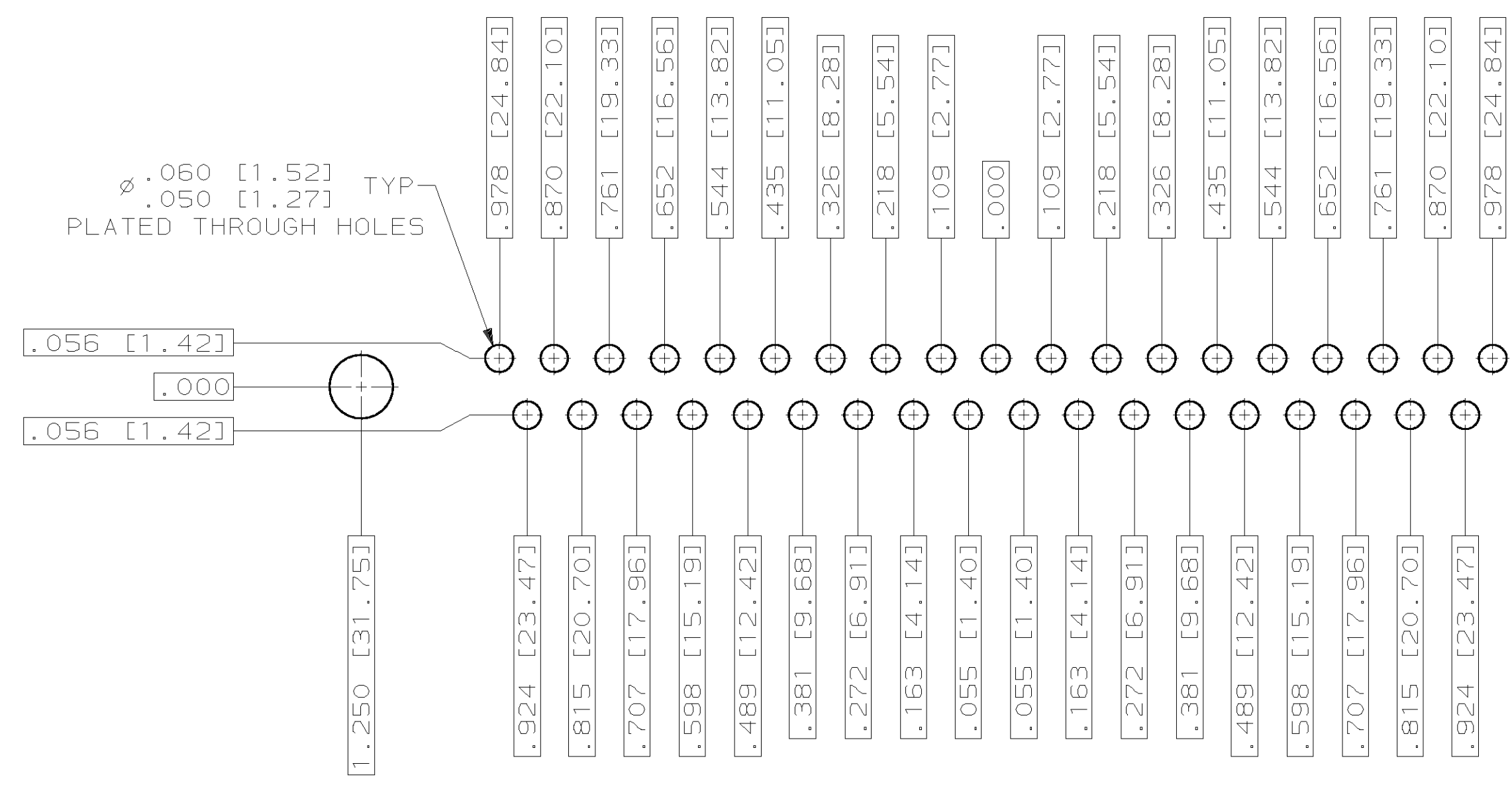
RECOMMENDED P.C. BOARD LAYOUT  
 SHELL SIZE 1 (9 POSITION) ⚠



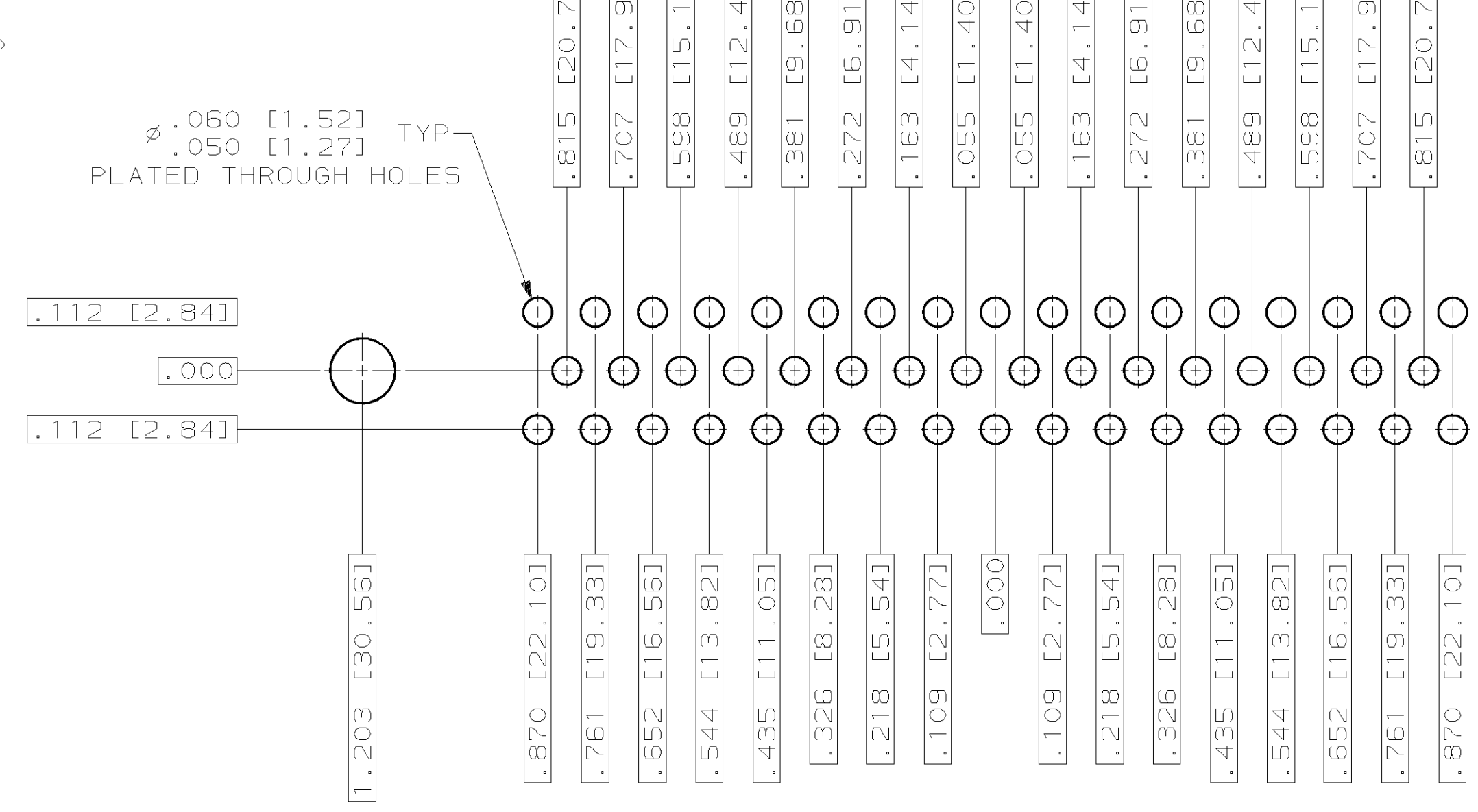
RECOMMENDED P.C. BOARD LAYOUT  
 SHELL SIZE 2 (15 POSITION) ⚠



RECOMMENDED P.C. BOARD LAYOUT  
 SHELL SIZE 3 (25 POSITION) ⚠



RECOMMENDED P.C. BOARD LAYOUT  
 SHELL SIZE 4 (37 POSITION) ⚠



RECOMMENDED P.C. BOARD LAYOUT  
 SHELL SIZE 5 (50 POSITION) ⚠

DO NOT SCALE PRINT. UNLESS SPECIFIED DIMENSIONS IN INCHES [mm] TOLERANCES ON: 2 PLC DEC ± .001 3 PLC DEC ± .002 ANGLES ± 1°	DR 9-10-92 AJ GRAFF CHK 9-17-92 B. GILLMAN APPD 9-17-92 F. KINSEY APPD 9-17-92 F. KINSEY	AMP INCORPORATED Harrisburg, Pa. 17105 NAME AMPLITE RECEPTACLE ASSY WITH SIZE 20 STRAIGHT POSTED P.C. BOARD CONTACTS, SERIES 109, SHELL SIZES 1 THRU 5
SEE CALLOUTS	PRODUCT SPEC MIL-C-24308	
FINISH SEE CALLOUTS	APPLICATION SPEC -	SIZE <b>D</b> FSCM NO 00779 DRAWING NO 593073 SCALE 4:1 SHEET 2 of 2