

MUR5005-MUR5060

50 AMP ULTRA FAST RECTIFIER

FEATURES

- Available as "HR" (high reliability) screened per MIL-PRF-19500, JANTX level. Add "HR" suffix to base part number.
- Available as non-RoHS (Sn/Pb plating), standard, and as RoHS by adding "-PBF" suffix.

MAXIMUM RATINGS

Rating	Symbol	MUR5005	MUR5010	MUR5020	MUR5040	MUR5060	Unit
Peak repetitive reverse voltage	V_{RRM}	50	100	200	400	600	V
Maximum RMS voltage	V_{RMS}	35	70	140	280	420	
DC blocking voltage	V_R	50	100	200	400	600	
Average forward current (Rated V_R) ⁽¹⁾	$I_{F(AV)}$	50 @ $T_C = 135^\circ\text{C}$					A
Peak forward surge current (8.3ms, halfsine)	I_{FSM}	600					A
Operating and storage junction temperature range	T_J, T_{stg}	-55 to +175					$^\circ\text{C}$

ELECTRICAL CHARACTERISTICS ($T_A = 25^\circ\text{C}$ unless otherwise specified)

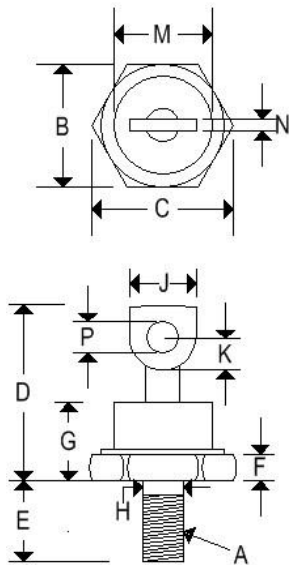
Parameter	Symbol	MUR5005	MUR5010	MUR5020	MUR5040	MUR5060	Unit
Maximum instantaneous forward voltage ⁽¹⁾ ($I_F = 50\text{A}$, $T_C = 25^\circ\text{C}$)	V_F	1.15			1.35	1.70	V
Maximum DC reverse current ⁽¹⁾ (Rated dc voltage, $T_C = 25^\circ\text{C}$) (Rated dc voltage, $T_C = 125^\circ\text{C}$)	I_R	50 6					μA mA
Maximum reverse recovery time ($I_F = 0.5\text{A}$, $I_R = 1.0\text{A}$, $I_{RR} = 0.25\text{A}$)	t_{rr}	60			75	90	ns
Typical junction capacitance (1.0MHz, $V_R = 10\text{V}$)	C_J	575			300	275	pF

MUR5005-MUR5060

50 AMP ULTRA FAST RECTIFIER

MECHANICAL CHARACTERISTICS

Case	DO-5(R)
Marking	Alpha-numeric
Normal polarity	Cathode is stud
Reverse polarity	Anode is stud (add "R" suffix)

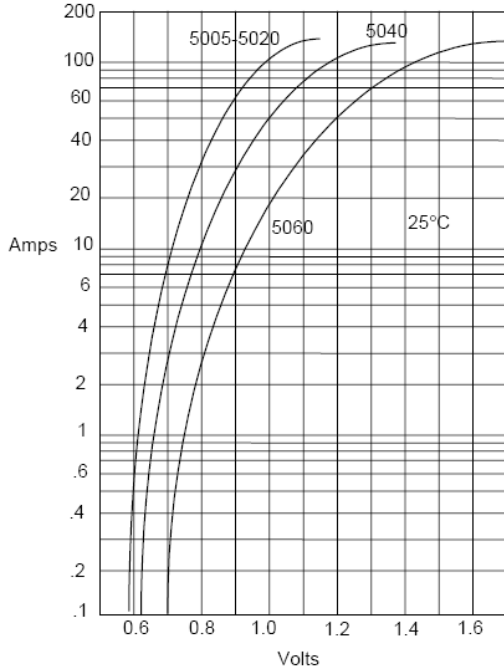


	DO-5(R)			
	Inches		Millimeters	
	Min	Max	Min	Max
A	1/4-28 UNF2A threads			
B	0.669	0.688	16.990	17.480
C	-	0.794	-	20.160
D	-	1.000	-	25.400
E	0.422	0.453	10.720	11.510
F	0.115	0.200	2.920	5.080
G	-	0.450	-	11.430
H	0.220	0.249	5.580	6.320
J	0.250	0.375	6.350	9.530
K	0.156	-	3.960	-
M	-	0.667	-	16.940
N	0.030	0.080	0.760	2.030
P	0.140	0.175	3.560	4.450

MUR5005-MUR5060

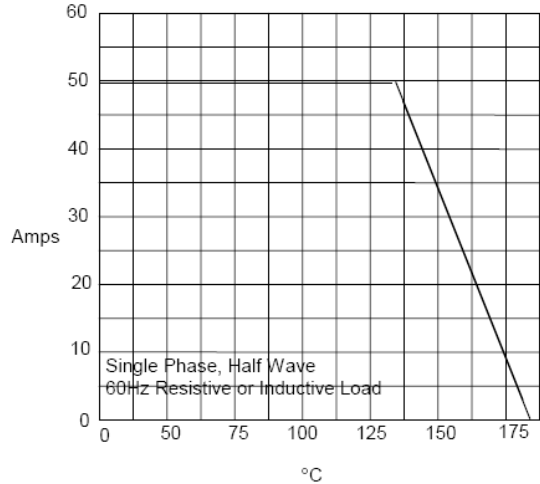
50 AMP ULTRA FAST RECTIFIER

Figure 1
Typical Forward Characteristics



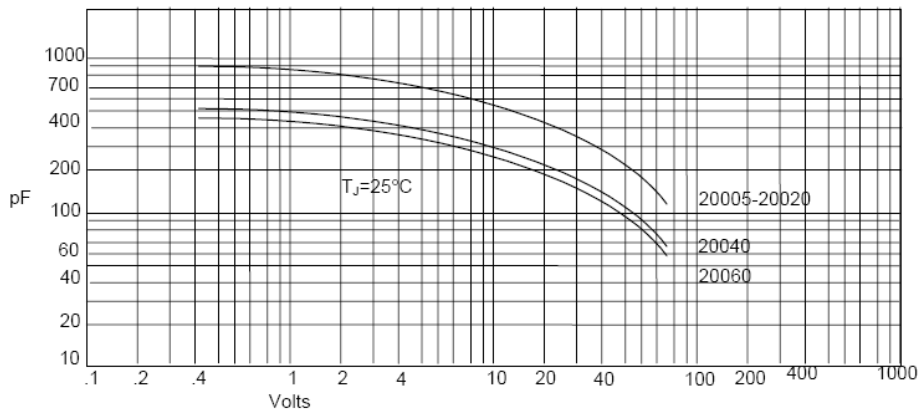
Instantaneous Forward Current - Amperes versus
Instantaneous Forward Voltage - Volts

Figure 2
Forward Derating Curve



Average Forward Rectified Current - Amperes versus
Case Temperature - °C

Figure 3
Junction Capacitance

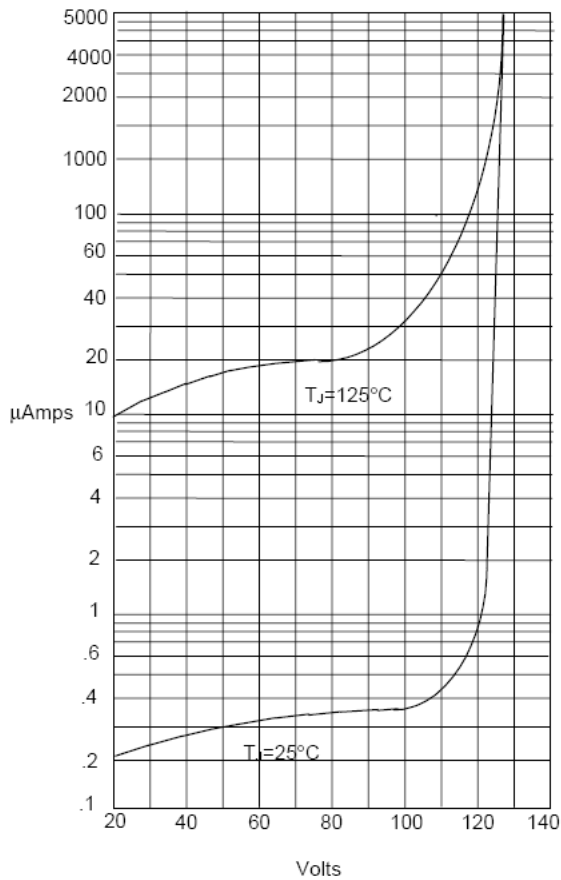


Junction Capacitance - pF versus
Reverse Voltage - Volts

MUR5005-MUR5060

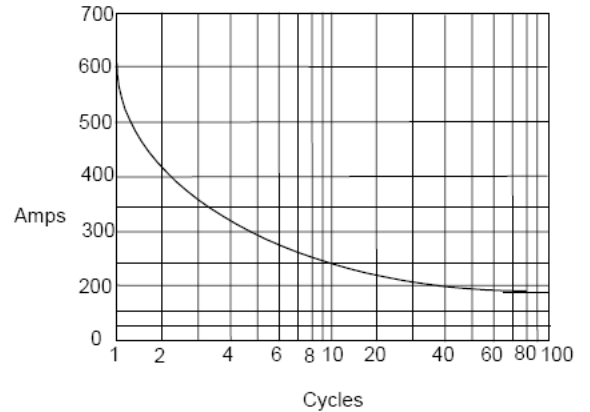
50 AMP ULTRA FAST RECTIFIER

Figure 4
Typical Reverse Characteristics



Instantaneous Reverse Leakage Current - MicroAmperes versus
Percent Of Rated Peak Reverse Voltage - Volts

Figure 5
Peak Forward Surge Current



Peak Forward Surge Current - Amperes versus
Number Of Cycles At 60Hz - Cycles