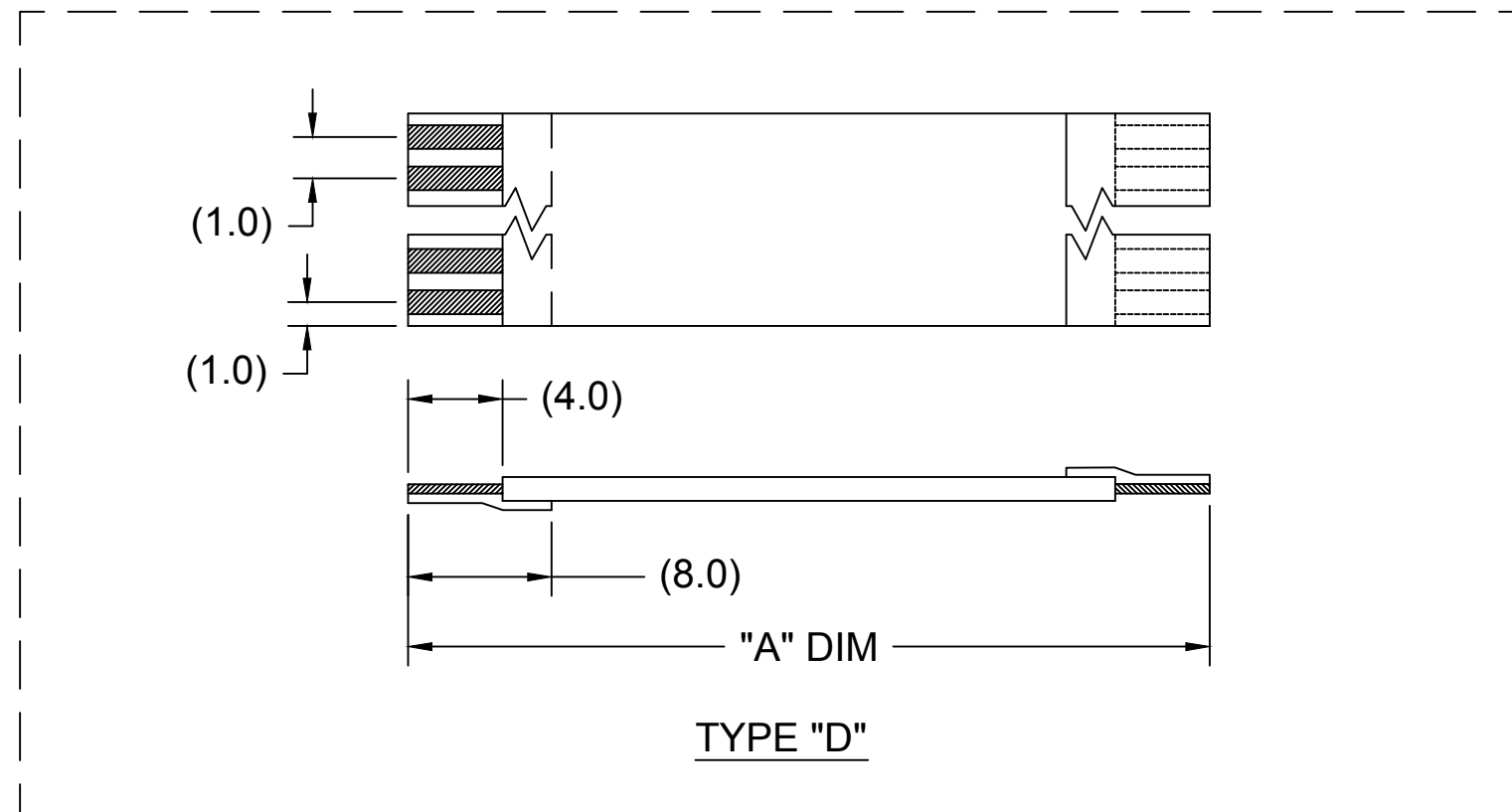
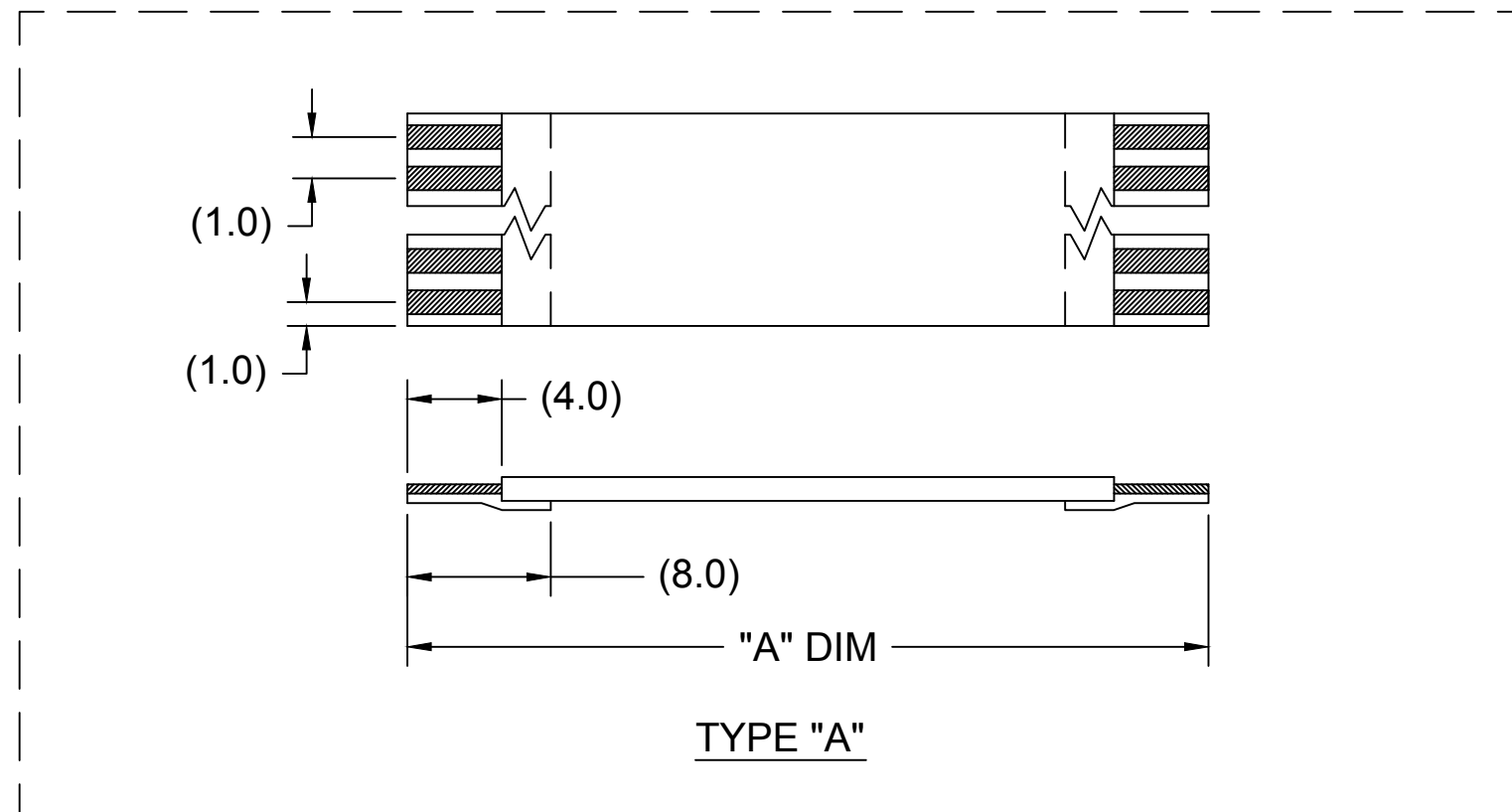


# 1.00MM CENTER FFC JUMPER CABLE (HIGH TEMPERATURE) CHART

"A" DIM.	1.18 ± .079 INCHES 30 ± 2.00		2 ± .079 INCHES 51 ± 2.00 MM		3 ± .118 INCHES 76 ± 3.00 MM		4 ± .118 INCHES 102 ± 3.00 MM		5 ± .157 INCHES 127 ± 4.00 MM		6 ± .157 INCHES 152 ± 4.00 MM		7 ± .157 INCHES 178 ± 4.00 MM		8 ± .157 INCHES 203 ± 4.00 MM		9 ± .197 INCHES 229 ± 5.00 MM		10 ± .197 INCHES 254 ± 5.00 MM		12 ± .197 INCHES 305 ± 5.00 MM	
STIFFENER	TYPE "A"	TYPE "D"	TYPE "A"	TYPE "D"	TYPE "A"	TYPE "D"	TYPE "A"	TYPE "D"	TYPE "A"	TYPE "D"	TYPE "A"	TYPE "D"	TYPE "A"	TYPE "D"	TYPE "A"	TYPE "D"	TYPE "A"	TYPE "D"	TYPE "A"	TYPE "D"	TYPE "A"	TYPE "D"
CKTS: 4	152670701	152670700	152670703	152670702	152670705	152670704	152670707	152670706	152670709	152670708	152670711	152670710	152670713	152670712	152670715	152670714	152670717	152670716	152670719	152670718	152670721	152670720
CKTS: 6	152670201	152670202	152670203	152670204	152670205	152670206	152670207	152670208	152670209	152670210	152670211	152670212	152670213	152670214	152670215	152670216	152670217	152670218	152670219	152670220	152670221	152670222
CKTS: 8	152670223	152670224	152670225	152670226	152670227	152670228	152670229	152670230	152670231	152670232	152670233	152670234	152670235	152670236	152670237	152670238	152670239	152670240	152670241	152670242	152670243	152670244
CKTS: 10	152670245	152670246	152670247	152670248	152670249	152670250	152670251	152670252	152670253	152670254	152670255	152670256	152670257	152670258	152670259	152670260	152670261	152670262	152670263	152670264	152670265	152670266
CKTS: 12	152670267	152670268	152670269	152670270	152670271	152670272	152670273	152670274	152670275	152670276	152670277	152670278	152670279	152670280	152670281	152670282	152670283	152670284	152670285	152670286	152670287	152670288
CKTS: 14	152670289	152670290	152670291	152670292	152670293	152670294	152670295	152670296	152670297	928670298	152670299	152670300	152670301	152670302	152670303	152670304	152670305	152670306	152670307	152670308	152670309	152670310
CKTS: 16	152670311	152670312	152670313	152670314	152670315	152670316	152670317	152670318	152670319	152670320	152670321	152670322	152670323	152670324	152670325	152670326	152670327	152670328	152670329	152670330	152670331	152670332
CKTS: 18	152670333	152670334	152670335	152670336	152670337	152670338	152670339	152670340	152670341	152670342	152670343	152670344	152670345	152670346	152670347	152670348	152670349	152670350	152670351	152670352	152670353	152670354
CKTS: 20	152670355	152670356	152670357	152670358	152670359	152670360	152670361	152670362	152670363	152670364	152670365	152670366	152670367	152670368	152670369	152670370	152670371	152670372	152670373	152670374	152670375	152670376
CKTS: 22	152670377	152670378	152670379	152670380	152670381	152670382	152670383	152670384	152670385	152670386	152670387	152670388	152670389	152670390	152670391	152670392	152670393	152670394	152670395	152670396	152670397	152670398
CKTS: 24	152670399	152670400	152670401	152670402	152670403	152670404	152670405	152670406	152670407	152670408	152670409	152670410	152670411	152670412	152670413	152670414	152670415	152670416	152670417	152670418	152670419	152670420
CKTS: 26	152670421	152670422	152670423	152670424	152670425	152670426	152670427	152670428	152670429	152670430	152670431	152670432	152670433	152670434	152670435	152670436	152670437	152670438	152670439	152670440	152670441	152670442
CKTS: 28	152670443	152670444	152670445	152670446	152670447	152670448	152670449	152670450	152670451	152670452	152670453	152670454	152670455	152670456	152670457	152670458	152670459	152670460	152670461	152670462	152670463	152670464
CKTS: 30	152670465	152670466	152670467	152670468	152670469	152670470	152670471	152670472	152670473	152670474	152670475	152670476	152670477	152670478	152670479	152670480	152670481	152670482	152670483	152670484	152670485	152670486
CKTS: 32	152670487	152670488	152670489	152670490	152670491	152670492	152670493	152670494	152670495	152670496	152670497	152670498	152670499	152670500	152670501	152670502	152670503	152670504	152670505	152670506	152670507	152670508
CKTS: 34	152670509	152670510	152670511	152670512	152670513	152670514	152670515	152670516	152670517	152670518	152670519	152670520	152670521	152670522	152670523	152670524	152670525	152670526	152670527	152670528	152670529	152670530
CKTS: 36	152670531	152670532	152670533	152670534	152670535	152670536	152670537	152670538	152670539	152670540	152670541	152670542	152670543	152670544	152670545	152670546	152670547	152670548	152670549	152670550	152670551	152670552
CKTS: 38	152670553	152670554	152670555	152670556	152670557	152670558	152670559	152670560	152670561	152670562	152670563	152670564	152670565	152670566	152670567	152670568	152670569	152670570	152670571	152670572	152670573	152670574
CKTS: 40	152670575	152670576	152670577	152670578	152670579	152670580	152670581	152670582	152670583	152670584	152670585	152670586	152670587	152670588	152670589	152670590	152670591	152670592	152670593	152670594	152670595	152670596

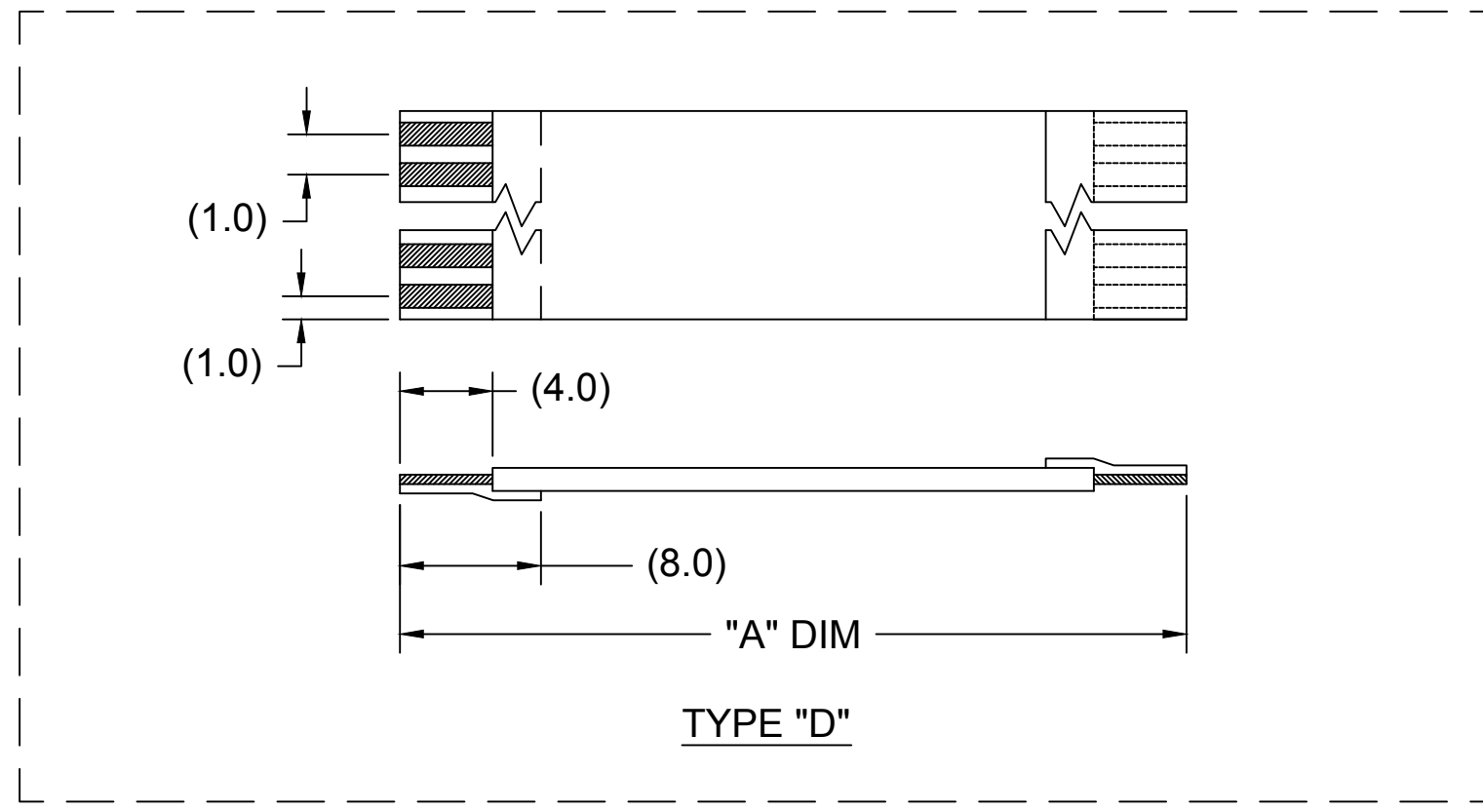
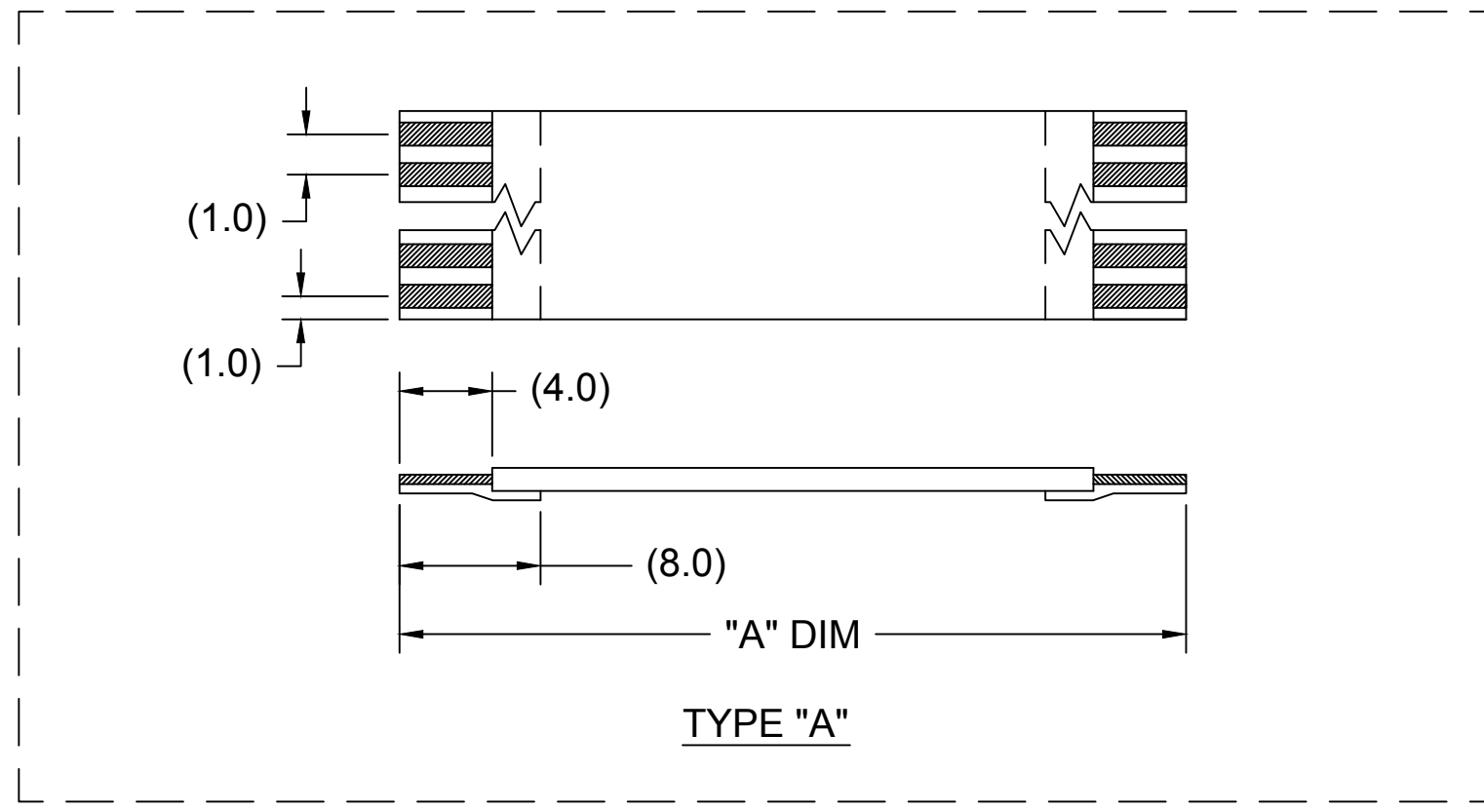


**NOTES:**  
 1. NO PRINTING ON JUMPER CABLE UNLESS OTHERWISE SPECIFIED. IF PRINTING IS REQUIRED, THEN IT WOULD BE CONSIDERED A SPECIAL JUMPER CABLE.

<b>RELEASED</b>	EC NO.: USW2011-0065 DRWN: JLW 2010/09/30	DESCRIPTION	QUALITY SYMBOL	<b>GENERAL TOLERANCES (UNLESS SPECIFIED)</b> <table border="1" style="width: 100%; border-collapse: collapse;"> <tr><th colspan="2"></th><th colspan="2" style="text-align: center;">DIMENSION STYLE</th></tr> <tr><th colspan="2"></th><th colspan="2" style="text-align: center;">MM</th></tr> <tr><th></th><th></th><th>mm</th><th>INCH</th></tr> <tr><td>4 PLACES</td><td>±---</td><td>±---</td><td>±---</td></tr> <tr><td>3 PLACES</td><td>±---</td><td>±---</td><td>±---</td></tr> <tr><td>2 PLACES</td><td>±---</td><td>±---</td><td>±---</td></tr> <tr><td>1 PLACE</td><td>±---</td><td>±---</td><td>±---</td></tr> </table>			DIMENSION STYLE				MM				mm	INCH	4 PLACES	±---	±---	±---	3 PLACES	±---	±---	±---	2 PLACES	±---	±---	±---	1 PLACE	±---	±---	±---	DRAWN BY	DATE	TITLE <b>1.00MM CENTER FFC JUMPER CABLE</b>
					DIMENSION STYLE																														
					MM																														
						mm	INCH																												
4 PLACES	±---	±---	±---																																
3 PLACES	±---	±---	±---																																
2 PLACES	±---	±---	±---																																
1 PLACE	±---	±---	±---																																
= 0 = 0	CHECKED BY	DATE	SCALE --- DESIGN UNITS <b>METRIC</b>																																
ANGULAR ±1/2°	APPROVED BY	DATE		<b>MOLEX INCORPORATED</b>																															
DRAFT WHERE APPLICABLE MUST REMAIN WITHIN DIMENSIONS	MATERIAL NO.	DOCUMENT NO.			SHEET NO. <b>1 OF 2</b>																														
SIZE <b>C</b>	THIS DRAWING CONTAINS INFORMATION THAT IS PROPRIETARY TO MOLEX INCORPORATED AND SHOULD NOT BE USED WITHOUT WRITTEN PERMISSION																																		

1.00MM CENTER FFC JUMPER CABLE (HIGH TEMPERATURE) CHART

"A" DIM.	1.18 ± .079 INCHES 30 ± 2.00		2 ± .079 INCHES 51 ± 2.00 MM		3 ± .118 INCHES 76 ± 3.00 MM		4 ± .118 INCHES 102 ± 3.00 MM		5 ± .157 INCHES 127 ± 4.00 MM		6 ± .157 INCHES 152 ± 4.00 MM		7 ± .157 INCHES 178 ± 4.00 MM		8 ± .157 INCHES 203 ± 4.00 MM		9 ± .197 INCHES 229 ± 5.00 MM		10 ± .197 INCHES 254 ± 5.00 MM		12 ± .197 INCHES 305 ± 5.00 MM	
STIFFENER	TYPE "A"	TYPE "D"	TYPE "A"	TYPE "D"	TYPE "A"	TYPE "D"	TYPE "A"	TYPE "D"	TYPE "A"	TYPE "D"	TYPE "A"	TYPE "D"	TYPE "A"	TYPE "D"	TYPE "A"	TYPE "D"	TYPE "A"	TYPE "D"	TYPE "A"	TYPE "D"	TYPE "A"	TYPE "D"
CKTS: 5	152670723	152670722	152670725	152670724	152670727	152670726	152670729	152670728	152670731	152670730	152670733	152670732	152670735	152670734	152670737	152670736	152670739	152670738	152670741	152670740	152670743	152670742
CKTS: 7	152670745	152670744	152670747	152670746	152670749	152670748	152670751	152670750	152670753	152670752	152670755	152670754	152670757	152670756	152670759	152670758	152670761	152670760	152670763	152670762	152670765	152670764
CKTS: 9	152670767	152670766	152670769	152670768	152670771	152670770	152670773	152670772	152670775	152670774	152670777	152670776	152670779	152670778	152670781	152670780	152670783	152670782	152670785	152670784	152670787	152670786
CKTS: 11	152670789	152670788	152670791	152670790	152670793	152670792	152670795	152670794	152670797	152670796	152670799	152670798	152670801	152670800	152670803	152670802	152670805	152670804	152670807	152670806	152670809	152670808
CKTS: 13	152670811	152670810	152670813	152670812	152670815	152670814	152670817	152670816	152670819	152670818	152670821	152670820	152670823	152670822	152670825	152670824	152670827	152670826	152670829	152670828	152670831	152670830
CKTS: 15	152670833	152670832	152670835	152670834	152670837	152670836	152670839	152670838	152670841	152670840	152670843	152670842	152670845	152670844	152670847	152670846	152670849	152670848	152670851	152670850	152670853	152670852
CKTS: 17	152670855	152670854	152670857	152670856	152670859	152670858	152670861	152670860	152670863	152670862	152670865	152670864	152670867	152670866	152670869	152670868	152670871	152670870	152670873	152670872	152670875	152670874
CKTS: 19	152670877	152670876	152670879	152670878	152670881	152670880	152670883	152670882	152670885	152670884	152670887	152670886	152670889	152670888	152670891	152670890	152670893	152670892	152670895	152670894	152670897	152670896
CKTS: 21	152670899	152670898	152670901	152670900	152670903	152670902	152670905	152670904	152670907	152670906	152670909	152670908	152670911	152670910	152670913	152670912	152670915	152670914	152670917	152670916	152670919	152670918
CKTS: 23	152670921	152670920	152670923	152670922	152670925	152670924	152670927	152670926	152670929	152670928	152670931	152670930	152670933	152670932	152670935	152670934	152670937	152670936	152670939	152670938	152670941	152670940
CKTS: 25	152670943	152670942	152670945	152670944	152670947	152670946	152670949	152670948	152670951	152670950	152670953	152670952	152670955	152670954	152670957	152670956	152670959	152670958	152670961	152670960	152670963	152670962
CKTS: 27	152670965	152670964	152670967	152670966	152670969	152670968	152670971	152670970	152670973	152670972	152670975	152670974	152670977	152670976	152670979	152670978	152670981	152670980	152670983	152670982	152670985	152670984
CKTS: 29	152670987	152670986	152670989	152670988	152670991	152670990	152670993	152670992	152670995	152670994	152670997	152670996	152670999	152670998	152671001	152671000	152671003	152671002	152671005	152671004	152671007	152671006
CKTS: 31	152671009	152671008	152671011	152671010	152671013	152671012	152671015	152671014	152671017	152671016	152671019	152671018	152671021	152671020	152671023	152671022	152671025	152671024	152671027	152671026	152671029	152671028
CKTS: 33	152671031	152671030	152671033	152671032	152671035	152671034	152671037	152671036	152671039	152671038	152671041	152671040	152671043	152671042	152671045	152671044	152671047	152671046	152671049	152671048	152671051	152671050
CKTS: 35	152671053	152671052	152671055	152671054	152671057	152671056	152671059	152671058	152671061	152671060	152671063	152671062	152671065	152671064	152671067	152671066	152671069	152671068	152671071	152671070	152671073	152671072
CKTS: 37	152671075	152671074	152671077	152671076	152671079	152671078	152671081	152671080	152671083	152671082	152671085	152671084	152671087	152671086	152671089	152671088	152671091	152671090	152671093	152671092	152671095	152671094
CKTS: 39	152671097	152671096	152671099	152671098	152671101	152671100	152671103	152671102	152671105	152671104	152671107	152671106	152671109	152671108	152671111	152671110	152671113	152671112	152671115	152671114	152671117	152671116



**NOTES:**  
 1. NO PRINTING ON JUMPER CABLE UNLESS OTHERWISE SPECIFIED. IF PRINTING IS REQUIRED, THEN IT WOULD BE CONSIDERED A SPECIAL JUMPER CABLE.

SEE SHEET 1	EC NO: DRWN: REV	DESCRIPTION	QUALITY SYMBOL	GENERAL TOLERANCES (UNLESS SPECIFIED)		DIMENSION STYLE		SCALE	DESIGN UNITS	THIRD ANGLE PROJECTION	
			▽=0	mm	INCH	MM	---	METRIC			
			∇=0	4 PLACES	±---	±---	DRAWN BY	DATE	TITLE	1.00MM CENTER FFC JUMPER CABLE	
				3 PLACES	±---	±---	CHECKED BY	DATE			
				2 PLACES	±---	±---	APPROVED BY	DATE			
	1 PLACE	±---	±---	DRASMUSS	2010/11/17	Molex	MOLEX INCORPORATED				
			ANGULAR ±1/2°	DRAFT WHERE APPLICABLE MUST REMAIN WITHIN DIMENSIONS		MATERIAL NO. SEE CHART		DOCUMENT NO. SD-15267-001	SHEET NO. 2 OF 2		
	1			SIZE C	THIS DRAWING CONTAINS INFORMATION THAT IS PROPRIETARY TO MOLEX INCORPORATED AND SHOULD NOT BE USED WITHOUT WRITTEN PERMISSION						